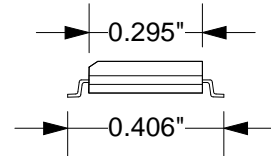
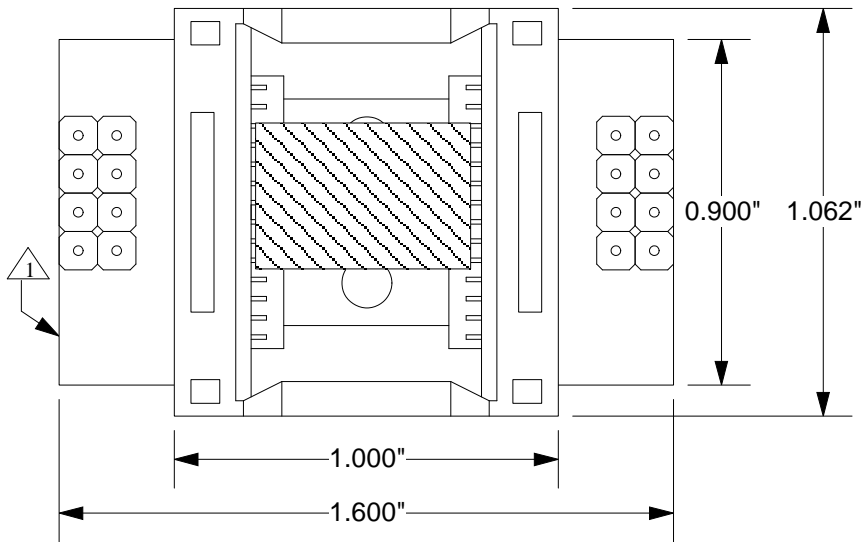
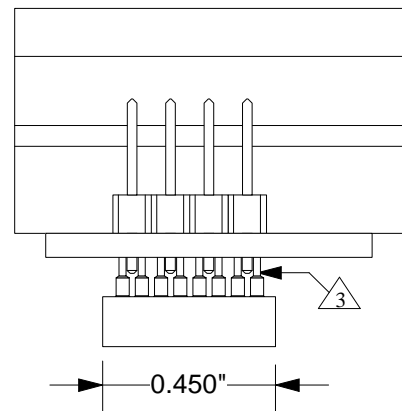
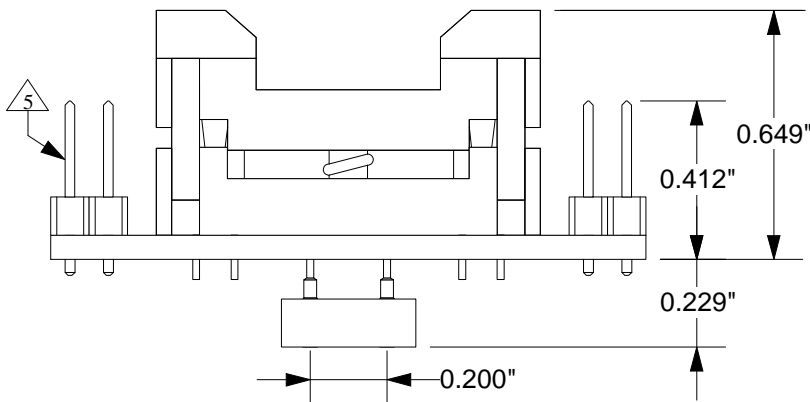


Note: Place part to be tested into socket as shown by square area.



Top View



△ 1 Substrate: 0.0625"±0.007" FR4/G10 or equivalent high temp material. 1/2 oz. Cu clad. SnPb plating


△ 3 Pins: shell material- Brass Alloy 360 1/2 hard; finish- 10µ" Au over 50µ" Nil (min.). Contact material- BeCu; finish 10µ" Au over 100µ" Ni (min.)

△ 5 Test points: material- Phosphor Bronze; plating- Sn over 50µ" Ni. Gold flash on contact end.

Description: CARRIER ADAPTOR:

A two piece surface mountable device with optional test points converting a 16 position SOIC (gull-wing) ZIF socket

All tolerances: ±0.005" (unless otherwise stated). Materials and specifications are subject to change without notice.

<p>CA-SO16B-Z-M-T-01 DRAWING</p>	<p>Status: Released</p>	<p>Scale: 2:1</p>	<p>Rev: A</p>
 <p>© 1997 IRONWOOD ELECTRONICS, INC. PO BOX 21151 ST. PAUL, MN 55121 Tele: (651) 452-8100</p>	<p>Drawing: E. Swanson</p>		<p>Date: 7/224/97</p>
	<p>File: CA-SO16B-Z-M-T-01 Dwg;</p>	<p>Modified: 3/9/98</p>	