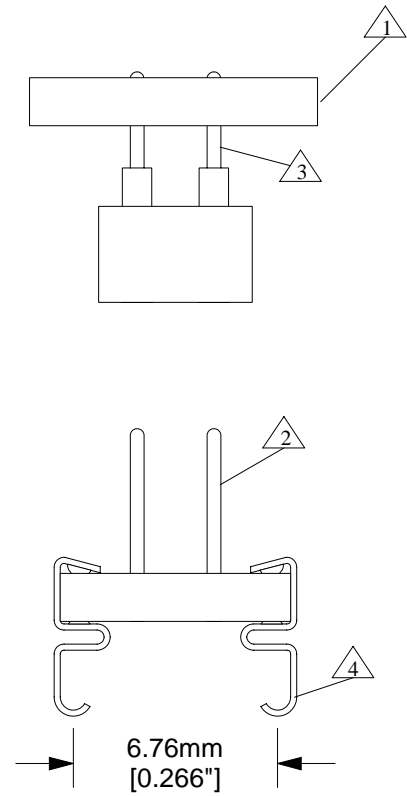


Side View




End View

- 1 Substrate: 1.59mm \pm 0.18mm [0.0625" \pm 0.007"] FR4/G10 or equivalent high temp material. 17 μ m [1/2 oz.] Cu clad. SnPb plating.
- 2 Pins: material- Brass Alloy 360 1/2 hard; finish- 0.25 μ m [10 μ "] Au over 1.27 μ m [50 μ "] Ni (min.).
- 3 Pins: shell material- Brass Alloy 360 1/2 hard; finish- 0.25 μ m [10 μ "] Au over 1.27 μ m [50 μ "] Ni (min.). Contact material- BeCu; finish 0.25 μ m [10 μ "] Au over 2.54 μ m [100 μ "] Ni (min.).
- 4 Leads: material- BeCu Alloy 194; plating- 60/40 SnPb 3.80-10.16 μ m [150-400 μ "].

Description: CARRIER ADAPTOR:

A two piece surface mountable device converting from a 20 position land pattern to a 20 position surface mount foot. Corresponds to Ironwood SOJ20A Spec.

Tolerances: diameters \pm 0.03mm [\pm 0.001"], PCB perimeters \pm 0.13mm [\pm 0.005"], PCB thicknesses \pm 0.18mm [\pm 0.007"], pitches (from true position) \pm 0.08mm [\pm 0.003"], all other tolerances \pm 0.13mm [\pm 0.005"] unless stated otherwise.

	CA-SOJ20A-S-J-01 Dwg	Status: Released	Scale: 4:1	Rev: C
	© 1994 IRONWOOD ELECTRONICS, INC. PO BOX 21151 ST. PAUL, MN 55121 Tele: (651) 452-8100 www.ironwoodelectronics.com	Drawing: P. Jasmin		Date: 2/8/94
		File: CA-SOJ20A-S-J-02	Modified: 5/18/00	