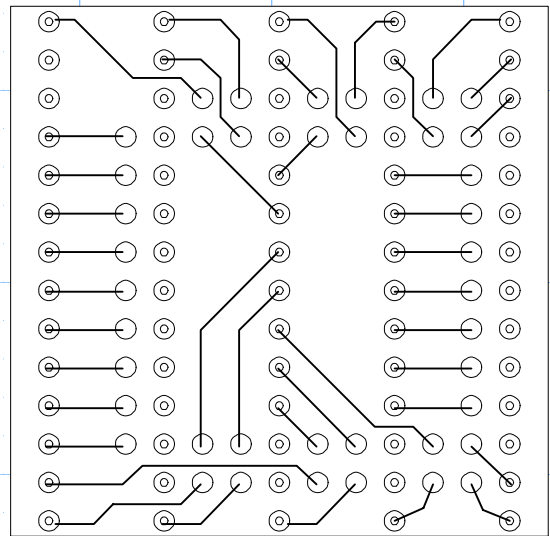
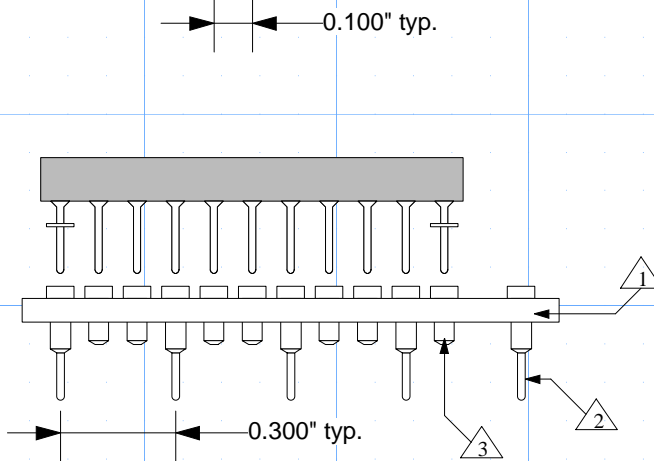


Top View



Bottom View




Side View

- 1 Substrate: 0.0625"±0.007" FR4/G10 or equivalent high temp material. 1/2 oz. Cu clad. SnPb plating
- 2 Pins: Material- Brass Alloy 360 1/2 hard; finish- 10µ" Au over 50µ" Ni (min.).
- 3 Pins: shell material- Brass Alloy 360 1/2 hard; finish- 10µ" Au over 50µ" Ni (min.). Contact material- BeCu; finish 10µ" Au over 100µ" Ni (min.)

Description: PGA PROTOTYPING ADAPTOR

68 position PGA socket receptacles to type A prototyping panel base terminal pins . PGA package depicted in side view not included. Add "W" to part number for optional wire wrap .

All tolerances: ±0.005" (unless stated otherwise). Materials and specifications are subject to change without notice.

PA-PGA68-08 Drawing		Status: released	Scale 2:1	Rev: A
 <p>© 1999 IRONWOOD ELECTRONICS, INC. PO BOX 21151 ST. PAUL, MN 55121 Tele: (651) 452-8100 www.ironwoodelectronics.com</p>	Drawing: M. Tully		Date: 4/15/99	
	File: PA-PGA068-08 Dwg.mcd			Modified: