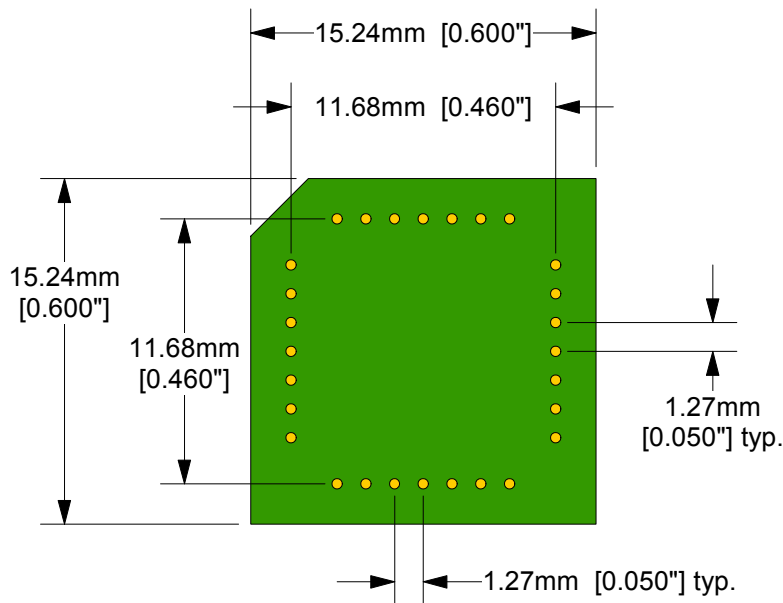
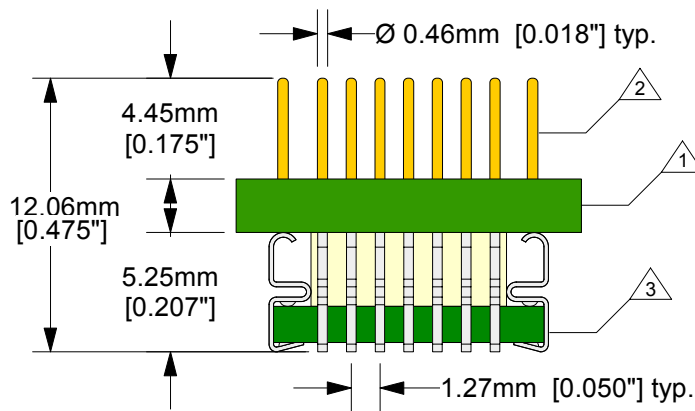


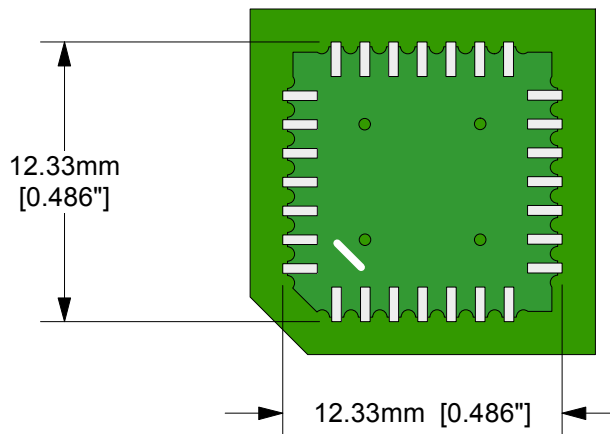
Top View



Side View



Bottom View




- ① Substrate: 0.062"±0.007" FR4/G10 or equivalent high temp material. 1/2 oz. Cu clad. SnPb plating
- ② Pins: Material- Brass Alloy 360 1/2 hard; finish- 10μ" Au over 50μ" Ni (min.).
- ③ Leads: material- BeCu Alloy 194; plating- 60/40 SnPb (150-400μ")

Description: Plug

28 position high density (0.05" centers) terminal pins to 28 position PLCC emulator plug. Pin Assignment: 1:1

Tolerances: diameters ±0.03mm [±0.001"], PCB perimeters ±0.13mm [±0.005"], PCB thicknesses ±0.18mm [±0.007"], pitches (from true position) ±0.08mm [±0.003"], all other tolerances ±0.13mm [±0.005"] unless stated otherwise. Materials and specifications are subject to change without notice.

	PL-PLCC28-H-01 Drawing	Status: Released	Scale: 3:1	Rev: D
	© 1997 IRONWOOD ELECTRONICS, INC. PO BOX 21151 ST. PAUL, MN 55121 Tele: (651) 452-8100 www.ironwoodelectronics.com	Drawing: E. V. S.		Date: 5/1/97
		File: PL-PLCC28-H-01 Dwg	Modified: 7/14/05	