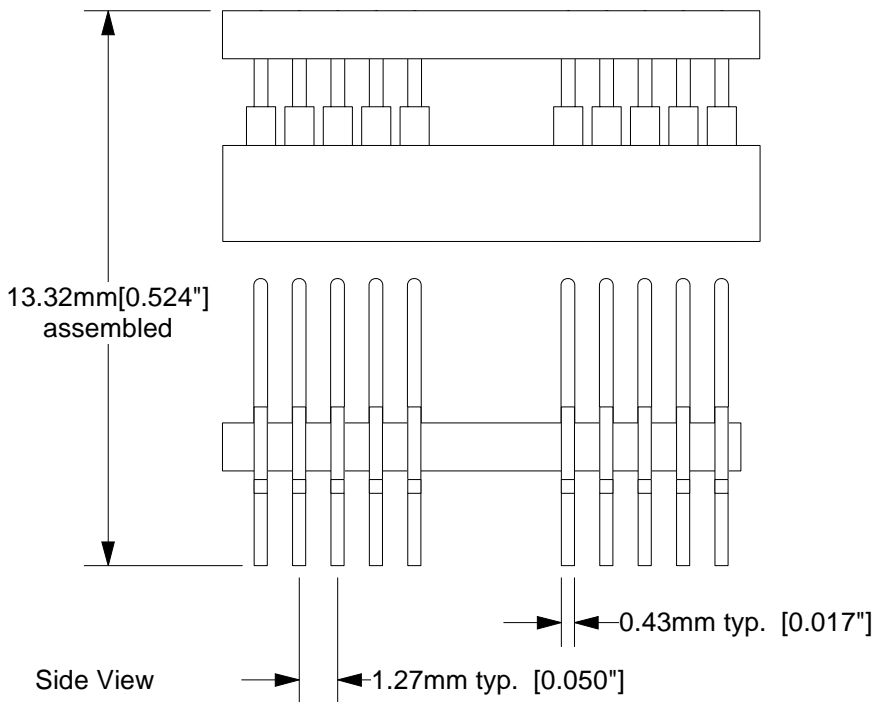
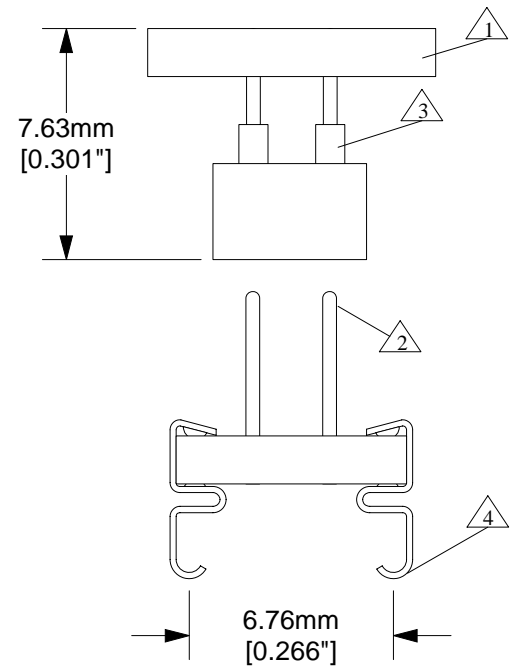


Top View



Side View



End View

① Substrate: 1.59mm  $\pm$ 0.18mm [0.0625"  $\pm$ 0.007"] FR4/G10 or equivalent high temp material. 17 $\mu$ m [1/2 oz.] Cu clad. SnPb plating.

② Pins: material- Brass Alloy 360 1/2 hard; finish- 0.25 $\mu$ m [10 $\mu$ " ] Au over 1.27 $\mu$ m [50 $\mu$ " ] Ni (min.).


③ Pins: shell material- Brass Alloy 360 1/2 hard; finish- 0.25 $\mu$ m [10 $\mu$ " ] Au over 1.27 $\mu$ m [50 $\mu$ " ] Ni (min.). Contact material- BeCu; finish 0.25 $\mu$ m [10 $\mu$ " ] Au over 2.54 $\mu$ m [100 $\mu$ " ] Ni (min. ).

④ Leads: material- BeCu Alloy 194; plating- 60/40 SnPb 3.80-10.16 $\mu$ m [150-400 $\mu$ " ].

Description: CARRIER ADAPTOR:

A two piece surface mountable device converting from a 20(26) position land pattern to a 20(26) position surface mount foot. Corresponds to Ironwood SOJ20B Spec.

Tolerances: diameters  $\pm$ 0.03mm [ $\pm$ 0.001"], PCB perimeters  $\pm$ 0.13mm [ $\pm$ 0.005"], PCB thicknesses  $\pm$ 0.18mm [ $\pm$ 0.007"], pitches (from true position)  $\pm$ 0.08mm [ $\pm$ 0.003"], all other tolerances  $\pm$ 0.13mm [ $\pm$ 0.005"] unless stated otherwise.

<b>CA-SOJ20BS-J-01 Drawing</b>		Status: Released	Scale: 4:1	Rev: D
 <p>© 1994 IRONWOOD ELECTRONICS, INC. PO BOX 21151 ST. PAUL, MN 55121 Tele: (651) 452-8100 www.ironwoodelectronics.com</p>	Drawing: M Tully		Date: 1/13/94	
	File: CA-SOJ20BS-J-01 Dwg		Modified: 5/18/00	