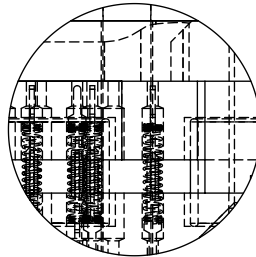
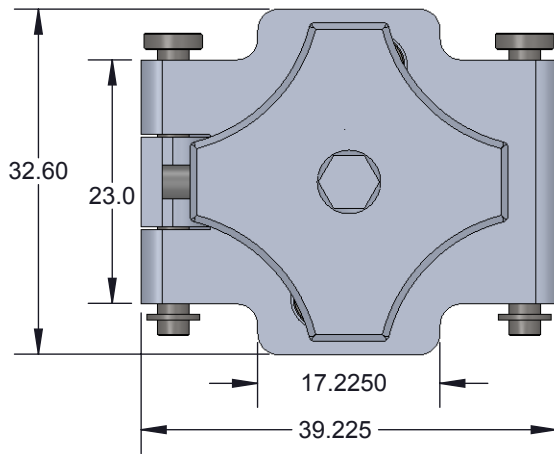


Clamshell Spring Pin Socket - Direct mount, solderless

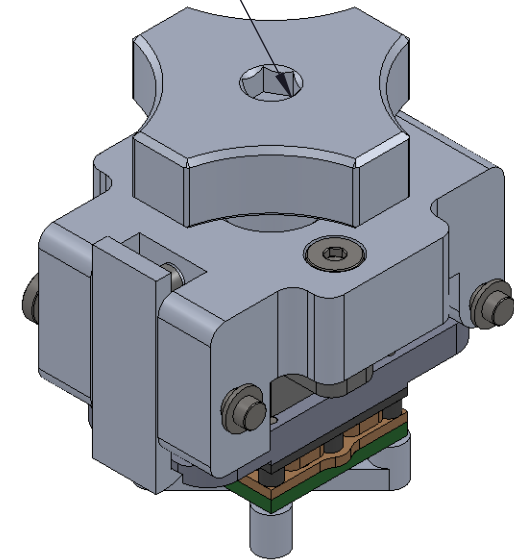
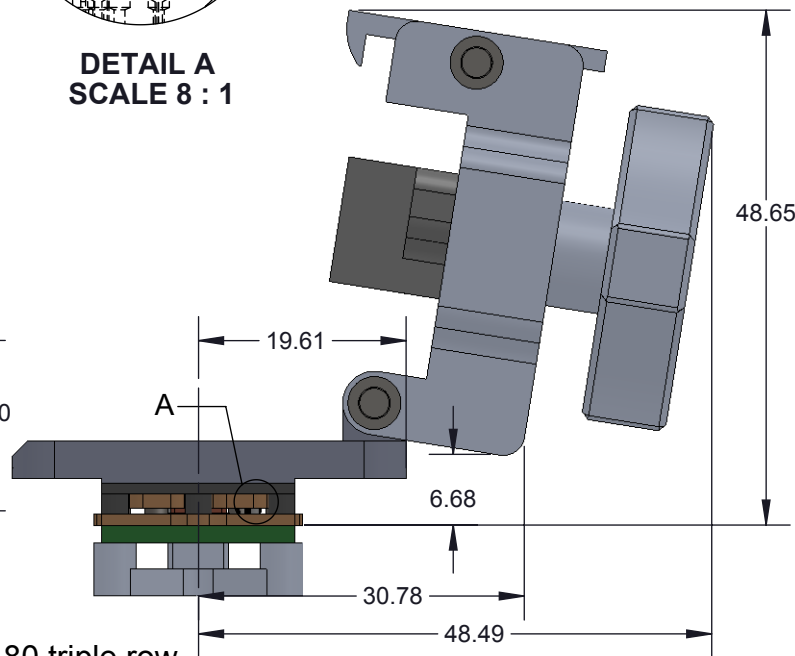
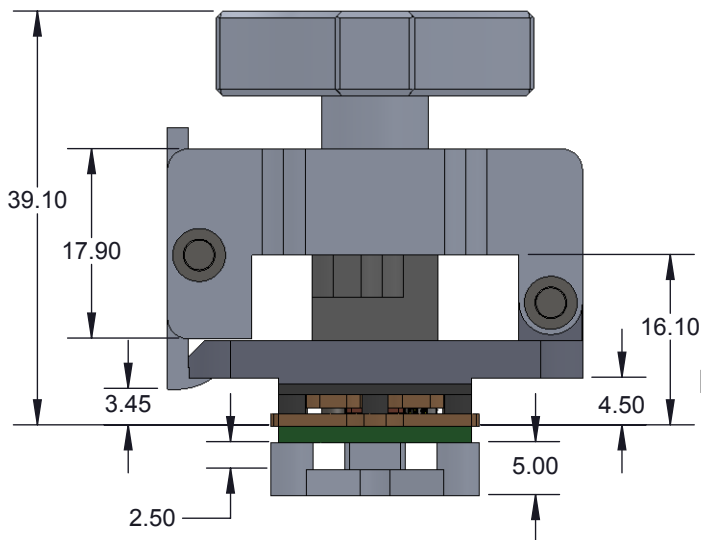
Features

- Wide temperature range (-55C to +180C).
- High current capability (up to 4A).
- Excellent signal integrity at high frequencies.
- Low and stable contact resistance for reliable production yield.
- Highly compliant to accommodate wide IC package co-planarity variations.
- Clamshell lid



DETAIL A
SCALE 8 : 1

Recommended Torque = 1-2 in-lbs



Description: CBT-LGA 12x12mm 0.6mm LGA180 triple row

Primary dimension units are millimeters, Secondary dimension units are [inches], Weight is in grams.

Tolerances: Hole diameters $\pm 0.03\text{mm}$ [$\pm 0.001"$], Pitches (from true position) $\pm 0.025\text{mm}$ [$\pm 0.001"$], substrate thickness tolerance $\pm 10\%$, all other tolerances $\pm 0.13\text{mm}$ [$\pm 0.005"$] unless stated otherwise. Materials and specifications are subject to change without notice.

CBT-LGA-5009 Drawing



Ironwood Electronics, Inc.
Tele: (800) 404-0204
www.ironwoodelectronics.com

Material: N/A
Finish: N/A
Weight: 65.72

STATUS: Released

ENG: S. Huang

FILE: CBT-LGA-5009 Dwg

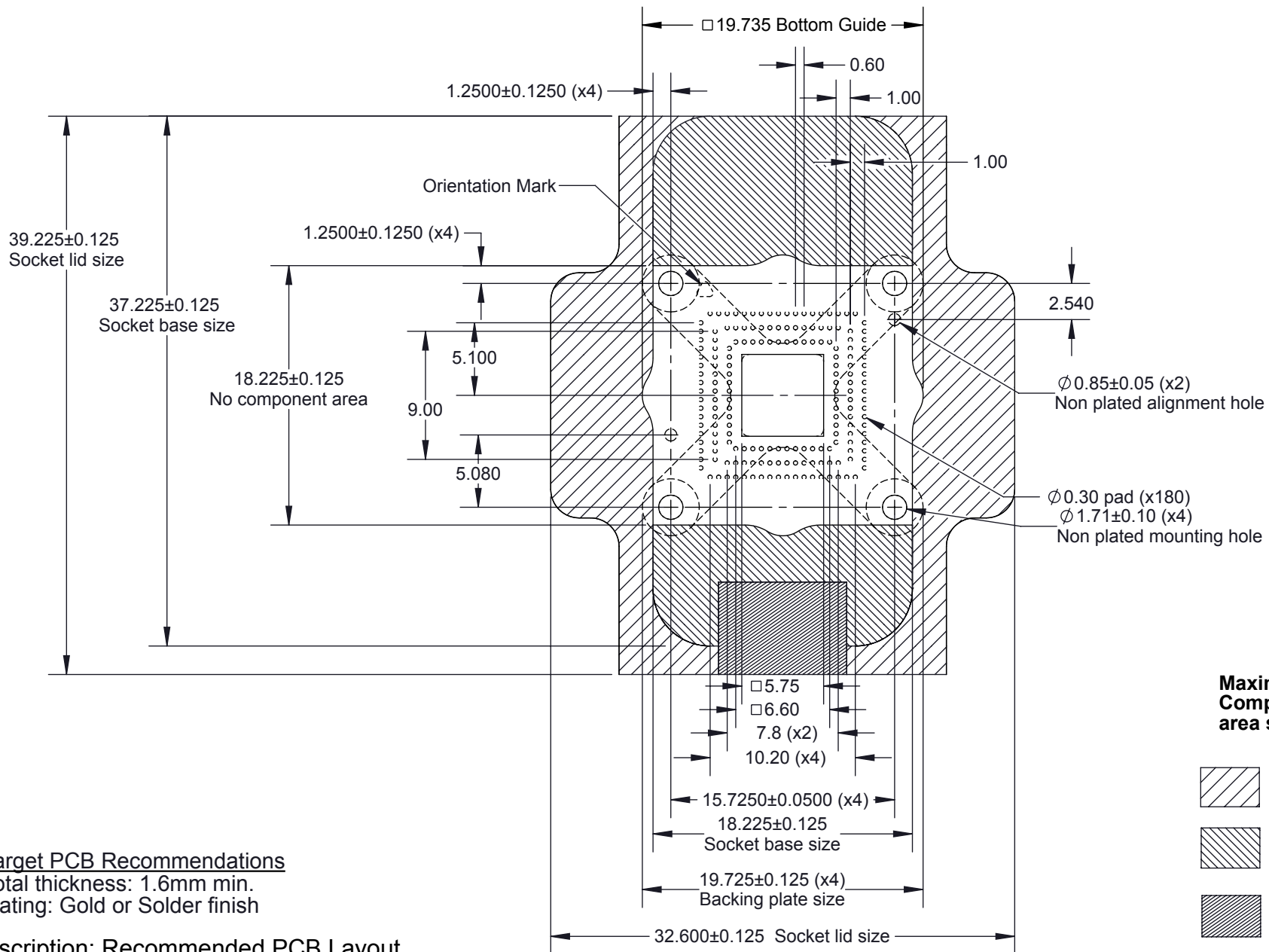
SHEET: 1 OF 5

DRAWN BY: M. Raske

DATE: 01/29/2015

REV. A

SCALE: 1.4:1




Target PCB Recommendations

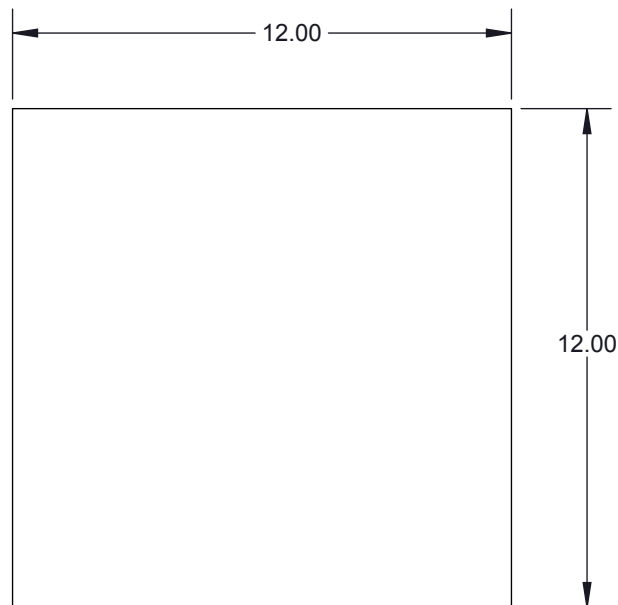
Total thickness: 1.6mm min.
Plating: Gold or Solder finish

Description: Recommended PCB Layout

Primary dimension units are millimeters, Secondary dimension units are [inches], Weight is in grams.

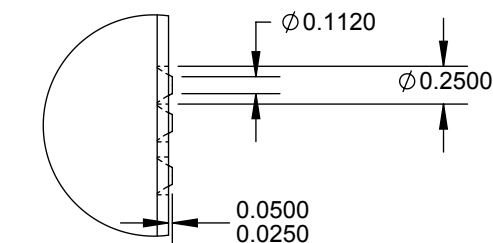
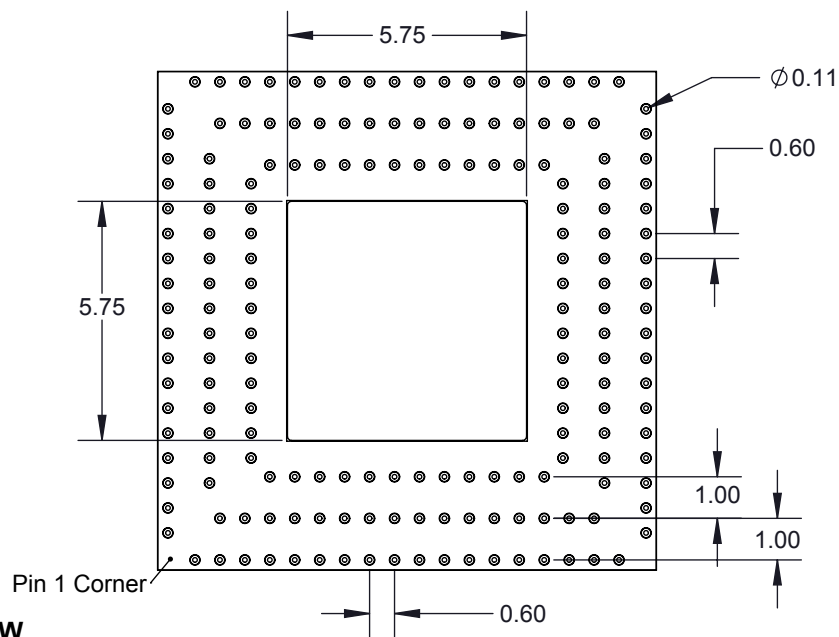
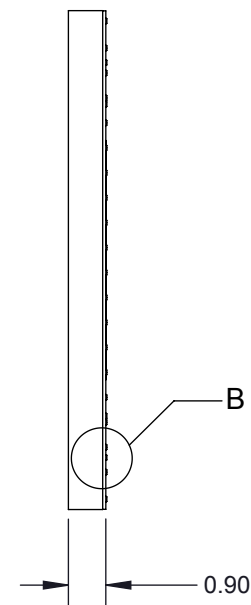
Tolerances: Hole diameters ±0.03mm [±0.001"], Pitches (from true position) ±0.025mm [±0.001"], substrate thickness tolerance ±10%, all other tolerances ±0.13mm [±0.005"] unless stated otherwise. Materials and specifications are subject to change without notice.

CBT-LGA-5009 Drawing  Ironwood Electronics, Inc. Tele: (800) 404-0204 www.ironwoodelectronics.com	Material: N/A Finish: N/A Weight: 65.72	STATUS: Released ENG: S. Huang FILE: CBT-LGA-5009 Dwg	SHEET: 2 OF 5 DRAWN BY: M. Raske DATE: 01/29/2015	REV. A SCALE: 2.5:1
-----------------------------------------------------------------------------------------------------------------------------------------------------------------------------------------------------	-----------------------------------------------	-------------------------------------------------------------	---------------------------------------------------------	------------------------



Ironwood package code: LGA180A

SIDE VIEW




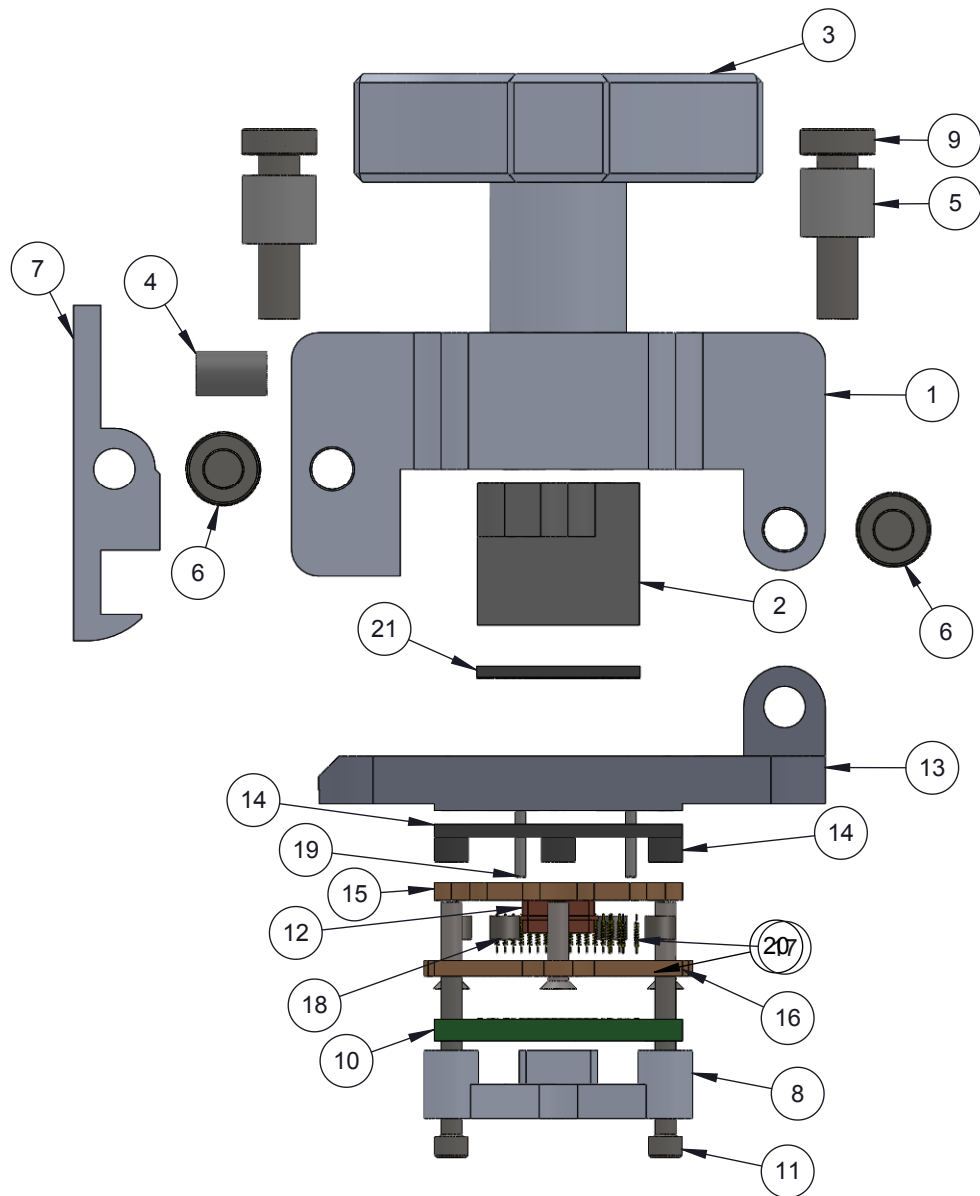
DETAIL B
SCALE 20 : 1

Description: Compatible LGA

Primary dimension units are millimeters, Secondary dimension units are [inches], Weight is in grams.

Tolerances: Hole diameters $\pm 0.03\text{mm}$ [$\pm 0.001"$], Pitches (from true position) $\pm 0.025\text{mm}$ [$\pm 0.001"$], substrate thickness tolerance $\pm 10\%$, all other tolerances $\pm 0.13\text{mm}$ [$\pm 0.005"$] unless stated otherwise. Materials and specifications are subject to change without notice.

 CBT-LGA-5009 Drawing Ironwood Electronics, Inc. Tele: (800) 404-0204 www.ironwoodelectronics.com	Material: N/A Finish: N/A Weight: 65.72	STATUS: Released	SHEET: 3 OF 5	REV. A
		ENG: S. Huang	DRAWN BY: M. Raske	SCALE: 5.5:1
		FILE: CBT-LGA-5009 Dwg	DATE: 01/29/2015	




ITEM NO.	DESCRIPTION	Material
1	Clam shell lid for 17mm IC	7075-T6 Aluminum Alloy
2	Compression Plate 12mm	7075-T6 Alumium Alloy
3	M10 Comression Screw	7075-T6 Aluminum Alloy
4	Precision Compression Spring, Zinc-Plated Music Wire, 1/2" Length, .12" OD, .016" Wire	Zinc Plated Music Wire
5	Spring Clamshell lid assembly	Steel Music Wire
6	Hinge Pin and Snap Ring, 3mm OD, 25mm long, SS	Stainless Steel (ferritic)
7	Clamshell Latch	7075-T6 Aluminum Alloy
8	13x13mm Clamshell Backing Plate w/ square post	7075-T6 Aluminum Alloy
9	Screw, M3 x 12mm, Low Head Cap, SS	18-8 Stainless Steel
10	PCB LGA180 0.6mm 12mm triple row	High Temp FR4
11	#0-80 x 0.5, SH Cap Screw	18-8 Stainless Steel
12	Copper Ground Slug 12mm QFN	Copper
13	CBT Socket Base 13mm	7075-T6 Aluminum Alloy
14	IC Guide with post for 12x12mm IC	Torlon 4203
15	Top Spring Pin Guide - LGA180 0.6mm 12mm	Semitron MDS 100
16	Bottom Spring Pin Guide - LGA180 0.6mm pitch 12mm	Semitron MDS 100
17	Stamped Pin, 0.4mm SBT-LGA/QFN	N/A
18	Floating Guide Spring	Alloy Steel (SS)
19	Dowel pin, 1/32" x 5/16", SS	Chrome Stainless Steel
20	#0-80X0.25", 90 deg., head pin guide screw, Peek material	PEEK unfilled
21	IC, LGA180 0.6mm pitch 12mm triple row	High Temp FR4

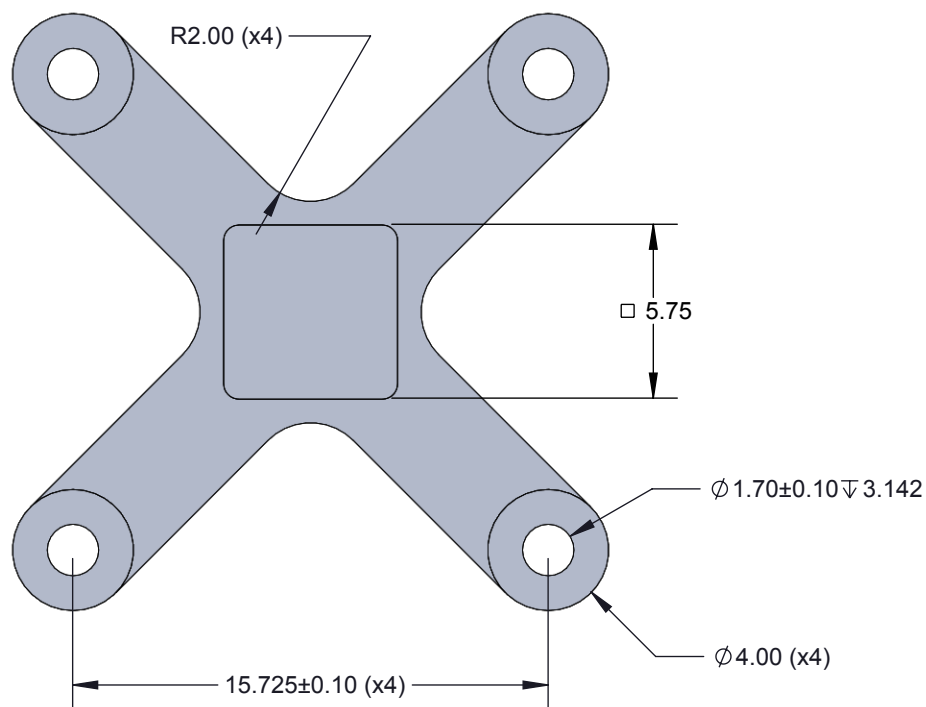
Description: Skt comp

Primary dimension units are millimeters, Secondary dimension units are [inches], Weight is in grams.

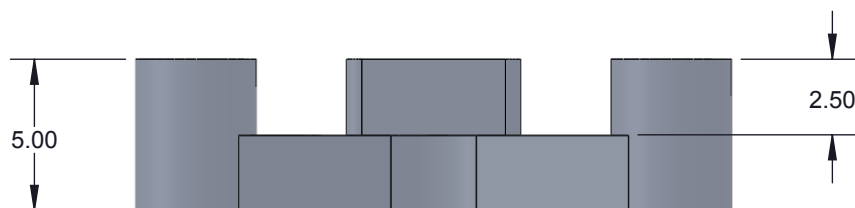
Tolerances: Hole diameters $\pm 0.03\text{mm}$ [$\pm 0.001"$], Pitches (from true position) $\pm 0.025\text{mm}$ [$\pm 0.001"$], substrate thickness tolerance $\pm 10\%$, all other tolerances $\pm 0.13\text{mm}$ [$\pm 0.005"$] unless stated otherwise. Materials and specifications are subject to change without notice.

CBT-LGA-5009 Drawing		STATUS: Released	SHEET: 4 OF 5	REV. A
 Ironwood Electronics, Inc. Tele: (800) 404-0204 www.ironwoodelectronics.com	Material: N/A	ENG: S. Huang	DRAWN BY: M. Raske	SCALE: 1.8:1
	Finish: N/A	FILE: CBT-LGA-5009 Dwg	DATE: 01/29/2015	
Weight: 65.72				

TOP VIEW



SIDE VIEW




SBT PIN
scale 16:1

Description: Backing plate and pin detail

Primary dimension units are millimeters, Secondary dimension units are [inches], Weight is in grams.

Tolerances: Hole diameters $\pm 0.03\text{mm}$ [$\pm 0.001"$], Pitches (from true position) $\pm 0.025\text{mm}$ [$\pm 0.001"$], substrate thickness tolerance $\pm 10\%$, all other tolerances $\pm 0.13\text{mm}$ [$\pm 0.005"$] unless stated otherwise. Materials and specifications are subject to change without notice.

CBT-LGA-5009 Drawing		STATUS: Released	SHEET: 5 OF 5	REV. A
 Ironwood Electronics, Inc. Tele: (800) 404-0204 www.ironwoodelectronics.com	Material: N/A	ENG: S. Huang	DRAWN BY: M. Raske	SCALE: 4:1
	Finish: N/A	FILE: CBT-LGA-5009 Dwg	DATE: 01/29/2015	
	Weight: 65.72			