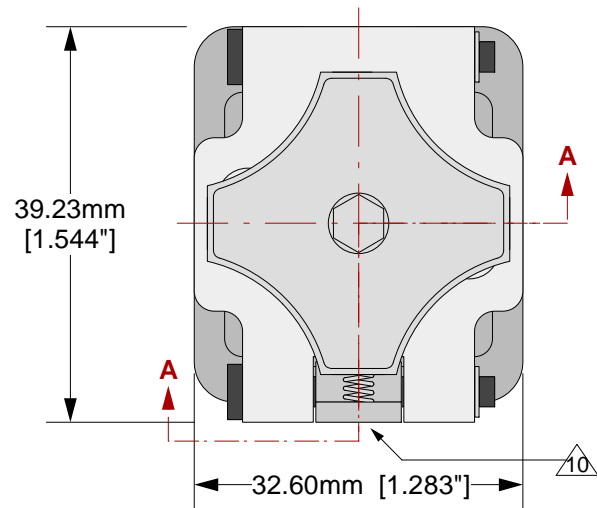
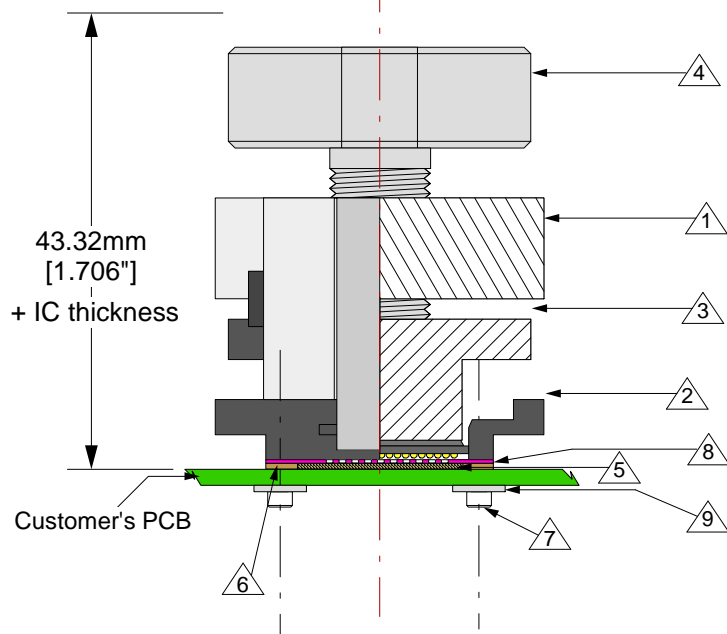


Top View



Side View  
(Section AA)




**Features**

- Directly mounts to target PCB (needs tooling holes) with hardware
- Minimum real estate required
- Compression plate distributes forces evenly
- Clamshell lid

**Materials:**

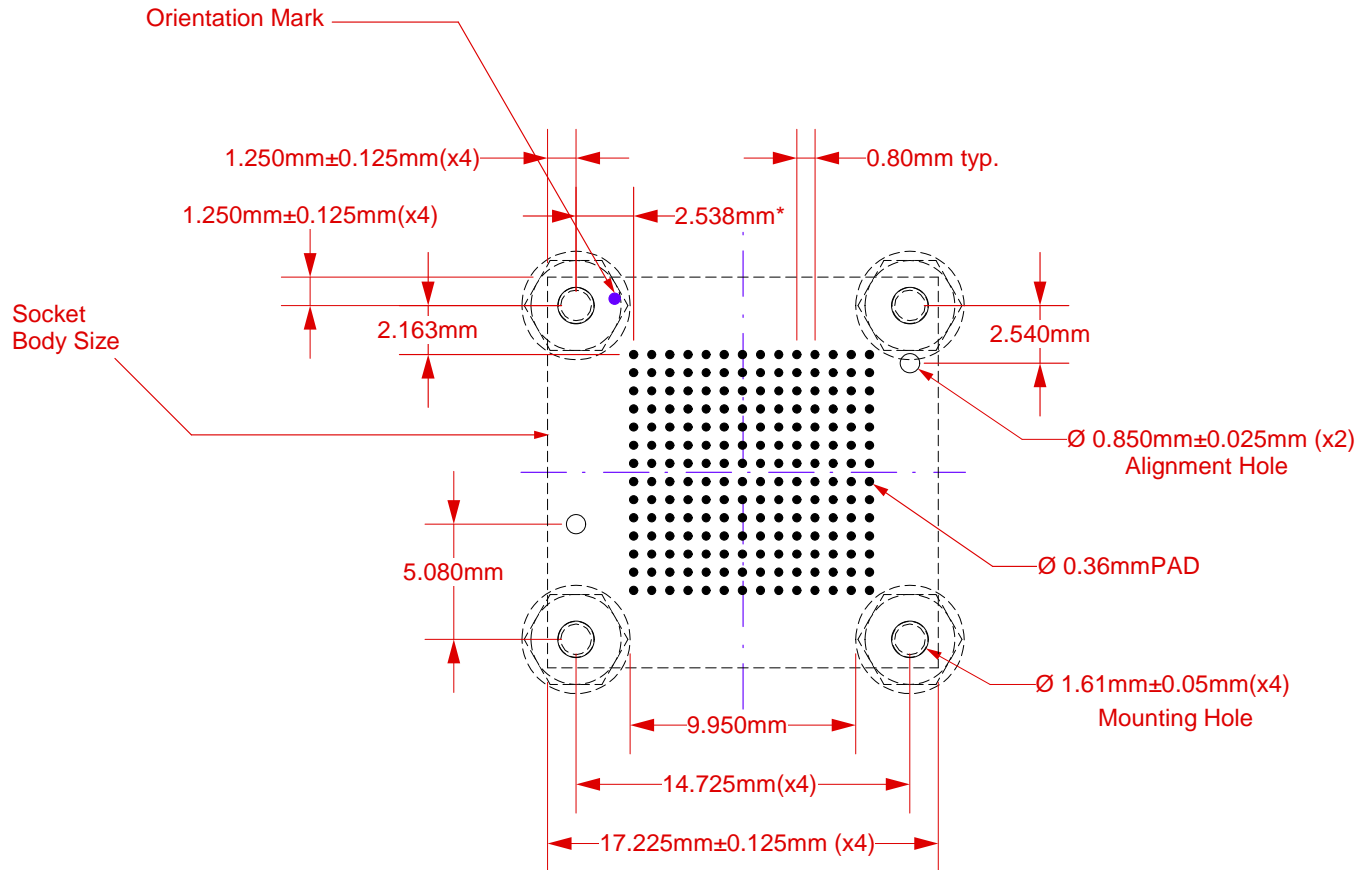
- 1 Clam Shell Lid: Black anodized Aluminum. Height = 20 mm.
- 2 Socket Base: Black anodized Aluminum. Height = 6 mm.
- 3 Compression Plate: Black anodized Aluminum. Thickness = 12 mm.
- 4 Compression Screw: Clear anodized Aluminum. Height = 27 mm, Fluted Knob
- 5 Elastomer: 40 micron dia gold plated brass filaments arranged symmetrically in a silicone rubber (63.5 degree angle). Thickness = 0.75mm.
- 6 Elastomer Guide: Non-clad FR4. Thickness = 0.725mm.
- 7 Socket Base Screw: Socket Head Cap Screw, alloy steel with black oxide finish, 0-80 Thread, 3/8" long.
- 8 Ball Guide: Kapton polyimide.
- 9 Nylon washer: 1.73mm ID; 4.78mm OD 0.64mm thickness.
- 10 Latch: Black anodized Aluminum.

	<b>CG-BGA-4010 Drawing</b>	Status: Released	Scale: 1.25:1	Rev: A
	© 2009 IRONWOOD ELECTRONICS, INC. 11351 Rupp Drive, Suite 400, Burnsville, MN 55337 Tele: (952) 229-8200 www.ironwoodelectronics.com	Drawing: M.A. Fedde	Date: 11/2/09	
		File: CG-BGA-4010 Dwg	Modified:	

All Tolerances: ±0.125mm (unless stated otherwise). Materials and specifications are subject to change without notice.

Recommended PCB Layout  
Top View


**\*Note: BGA pattern is not symmetrical with respect to the mounting holes. It is offset by 0.375mm to the right of center with respect to the mounting holes.**



Target PCB Recommendations

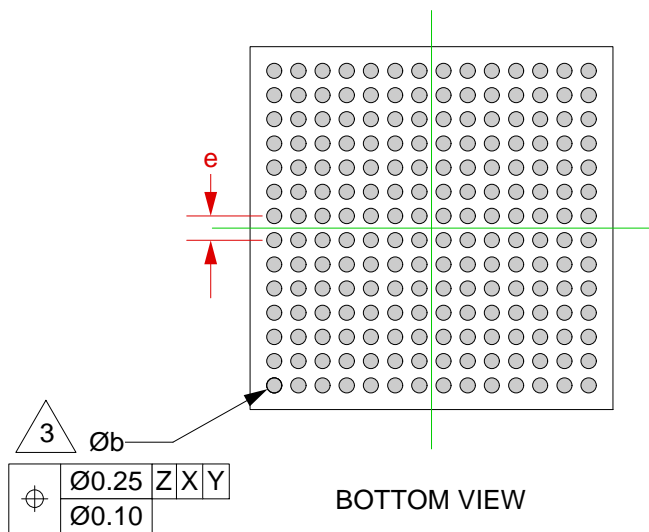
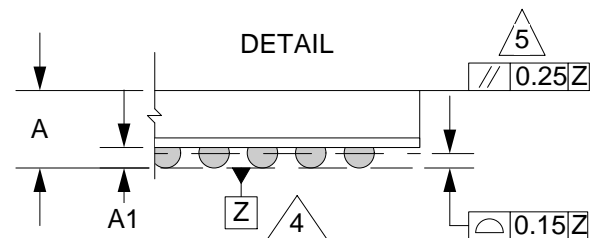
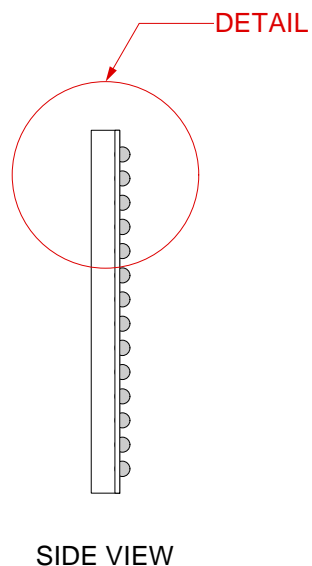
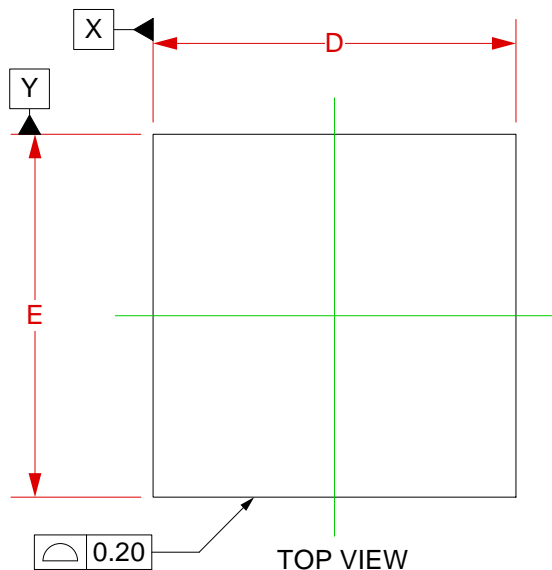
Total thickness: 1.5mm min.  
Plating: Gold or Solder finish

DXF DATA WILL BE PROVIDED

	<b>CG-BGA-4010 Drawing</b>		Status: Released	Scale: 3:1	Rev: A
	© 2009 IRONWOOD ELECTRONICS, INC. 11351 Rupp Drive, Suite 400, Burnsville, MN 55337 Tele: (952) 229-8200 www.ironwoodelectronics.com		Drawing: M.A. Fedde		Date: 11/2/09
			File: CG-BGA-4010 Dwg		Modified:

Recommended PCB Layout Tolerances:  
 $\pm 0.025\text{mm} [\pm 0.001"]$  unless stated otherwise.


Compatible BGA Spec



- 1 Dimensions are in millimeters.
- 2 Interpret dimensions and tolerances per ASME Y14.5M-1994.
- 3 Dimension b is measured at the maximum solder ball diameter, parallel to datum plane Z.
- 4 Datum Z (seating plane) is defined by the spherical crowns of the solder balls.
- 5 Parallelism measurement shall exclude any effect of mark on top surface of package.

DIM	MIN	MAX
A		2.5
A1	0.2	0.34
b		0.50
D	12.00 BSC	
E	12.00 BSC	
e	0.80 BSC	

Array 14x14

	<b>CG-BGA-4010 Drawing</b>	Status: Released	Scale: 4:1	Rev: A
	© 2009 IRONWOOD ELECTRONICS, INC. 11351 Rupp Drive, Suite 400, Burnsville, MN 55337 Tele: (952) 229-8200 www.ironwoodelectronics.com	Drawing: M.A. Fedde		Date: 11/2/09
		File: CG-BGA-4010 Dwg	Modified:	