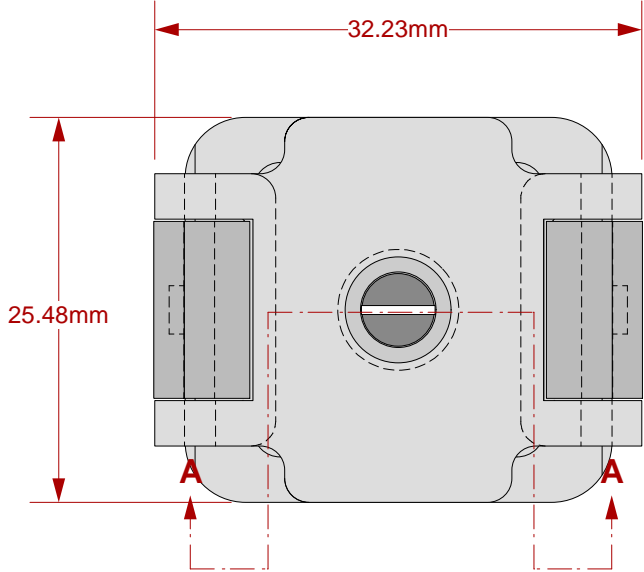
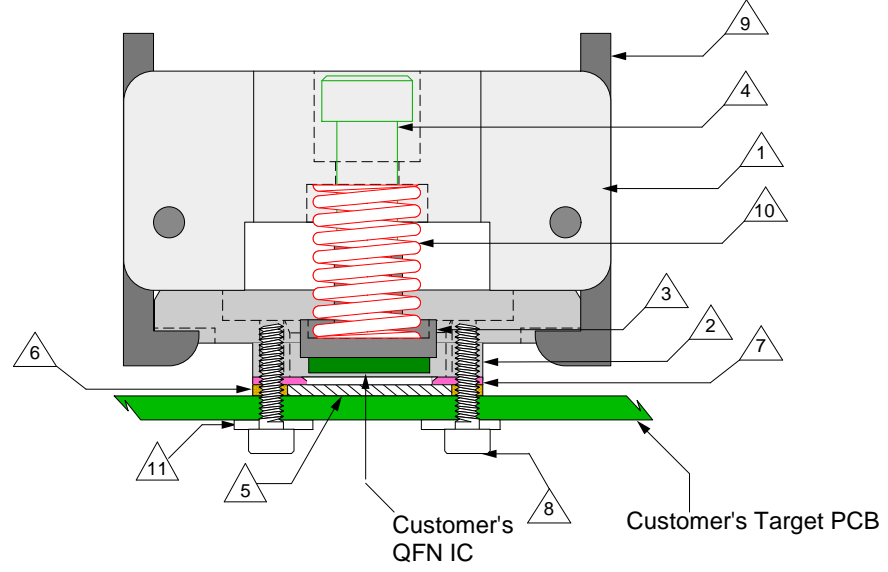


GHz MLF Socket - Direct mount, solderless

Top View



Side View
(Section AA)



Features

- Directly mounts to target PCB (needs tooling holes) with hardware.
- High speed, reliable Elastomer connection
- Minimum real estate required
- Compression plate distributes forces evenly
- Easily removable clamshell socket lid

- △ 1 Clamshell Socket Lid: Black anodized Aluminum.

- △ 2 Double latch clamshell Socket base: Black anodized Aluminum.

- △ 3 Compression Plate: Black anodized Aluminum.

- △ 4 Shoulder screw: Stainless Steel.
#2-56 threads, shoulder dia. = 4mm.

- △ 5 Elastomer: 40 micron dia gold plated brass filaments arranged symmetrically in a silicone rubber (63.5 degree angle).
Thickness = 0.75mm.

- △ 6 Elastomer Guide: Non-clad FR4.
Thickness = 0.725mm.


- △ 7 IC Guide: Torlon

- △ 8 Socket base screw: Socket head cap, alloy steel with black oxide finish, 0-80 fine thread , 6.35mm long.

- △ 9 Latch: Black anodized Aluminum

- △ 10 Compression Spring: 18-8 Stainless steel, 0.31"OD

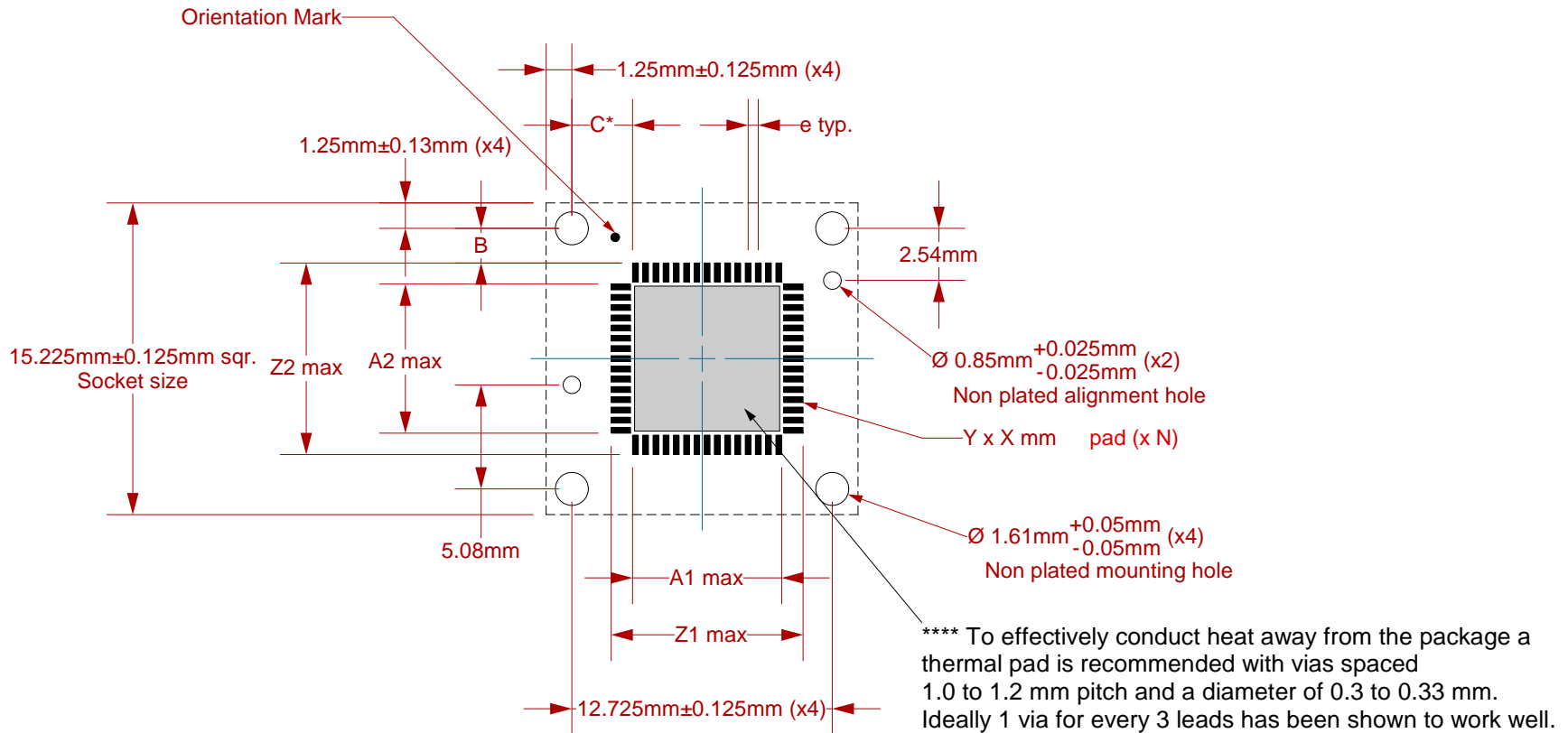
- △ 11 Nylon washer: 1.73mm ID; 4.78mm OD
0.64mm thickness.

	CG-QFN-7001 Drawing	Status: Released	Scale: 2:1	Rev: B
	© 2010 IRONWOOD ELECTRONICS, INC. Tele: (952) 229-8200 www.ironwoodelectronics.com	Drawing: Vinayak R		Date: 3/1/10
		File: CG-QFN-7001 Dwg	Modified: 05/07/14, DH	

All tolerances: ±0.125mm (unless stated otherwise). Materials and specifications are subject to change without notice.

Recommended PCB Layout
Top View

***Note: MLF pattern is not symmetrical with respect to the mounting holes. It is offset 0.25mm to the right of center.**




Package Code	C	B	Z1max	A1max	Z2max	A2 min	e	Xmax	Yref	N	Thermal Pad Recommendations
MLF68A	2.47	1.18	10.36	8.28	10.36	8.28	0.5	0.28	0.94	68	8.08 x 8.08

Target PCB Recommendations

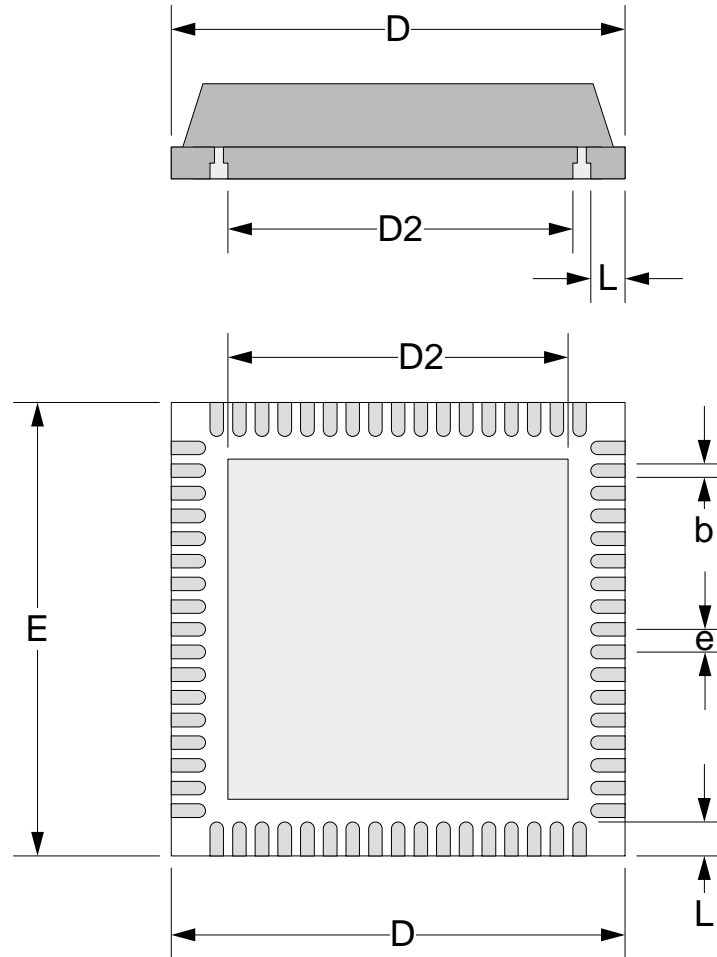
Total thickness: 1.6mm min.


Plating: Gold or Solder finish

PCB Pad height: Same or higher than solder mask

CG-QFN-7001 Drawing		Status: Released	Scale: 3:1	Rev: B
 © 2010 IRONWOOD ELECTRONICS, INC. Tele: (952) 229-8200 www.ironwoodelectronics.com	Drawing: Vinayak R		Date: 3/1/10	
	File: CG-QFN-7001 Dwg		Modified: 05/07/14, DH	

Package Code	e	D min	D max	E min	E max	b min	b max	L min	L max	D2	N
MLF68A	0.5	9.85	10.15	9.85	10.15	0.18	0.3	0.5	0.75	8.18	68



	CG-QFN-7001 Drawing	Status: Released	Scale: N/A	Rev: B
	© 2010 IRONWOOD ELECTRONICS, INC. Tele: (952) 229-8200 www.ironwoodelectronics.com	Drawing: Vinayak R	Date: 3/1/10	
		File: CG-QFN-7001 Dwg	Modified: 05/07/14, DH	