

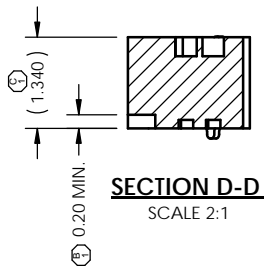
SOCKET TOP (DUT) VIEW

SOCKET BOTTOM (PWB) VIEW

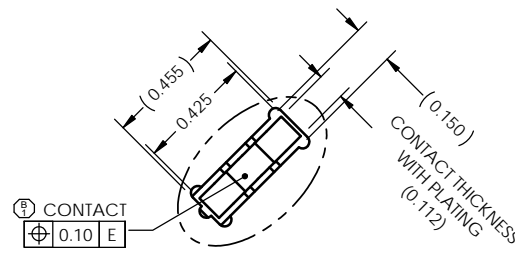
REV	ECO	BY	DESCRIPTION	APV	DATE
A	30525	AS	Initial Design	KW	08/19/10
B	30536	AS	Corrected typo in table, removed note 8 callouts, 1) Added geom. tolerance	KW	08/26/10
C	30594	AS	1) Was 1.315	KW	10/20/10
D	30649	MP	Added "MIN" to pocket depth	MP	12/09/10
E	31156	WB	Updated to current standard	KW	08/13/12

Notes:

- Reference R&D Interconnect Solutions specification 103862-0004 for solder attachment.
- Dimension locates center of contact/ slot.
- Reference R&D Interconnect Solutions specification 103863-0001 for application notes.
- Footprint part number is 104311-0244.
- Datums B and C are determined by $\phi 0.315$ features on corner slots.
- Tooling marks permitted. Maximum 0.10 protrusion (shown).
- E - Center of Ball Pattern.
- Unless otherwise noted, all features located $\oplus 0.10$ A B C
- Press size 12.00X12.00.
- Not all contacts shown to reduce file size.

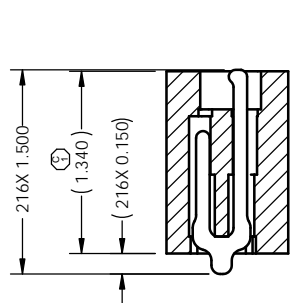


SECTION D-D
SCALE 2:1

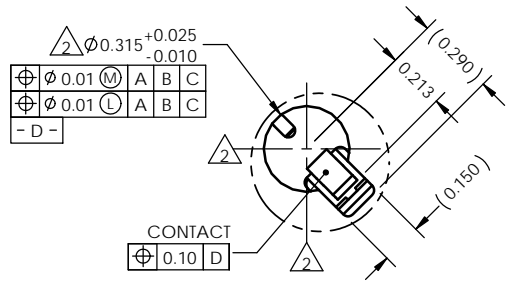


DETAIL C (216X)
SCALE 8:1

Parts List			
Item	Qty	Part Number	Description
-	-	107022-0043	SKCT, 216G4012-0.40, CUSTOM
1	1	107622-0001	CS, 216G4012-0.40 W/O SB
-	-	103684-0002	PRESS, DEVICE INSERT (SOLD SEPARATELY)
-	-	105900-0004	EXTRACTION TOOL, 4X53 (SOLD SEPARATELY)
-	-	107030-0043	STEN, FLEX, 216G4012-0.40 (SOLD SEPARATELY)



SECTION A-A
SCALE 4:1



DETAIL B (216X)
SCALE 8:1

UNLESS OTHERWISE SPECIFIED DIMENSIONS ARE IN MILLIMETERS DIMS APPLY AFTER PLATING TOLERANCES UNLESS OTHERWISE NOTED:
 ANGLES DECIMALS
 ±1° XX ±0.25
 XXX ±0.10
 XXXX ±0.050

THE INFORMATION CONTAINED IN THIS DRAWING IS THE SOLE PROPERTY OF R&D INTERCONNECT SOLUTIONS. ANY REPRODUCTION IN PART OR WHOLE WITHOUT THE WRITTEN PERMISSION OF R&D INTERCONNECT SOLUTIONS IS PROHIBITED.

CAD GENERATED DRAWING DO NOT MANUALLY UPDATE

7115 NORTHLAND TERRACE SUITE 400
 BROOKLYN PARK, MN 55428
 (763) 509-0066

DRAWING APPROVALS

NAME A. Seiberlich	DATE 08/19/10
NAME K. Wilson	DATE 08/19/10

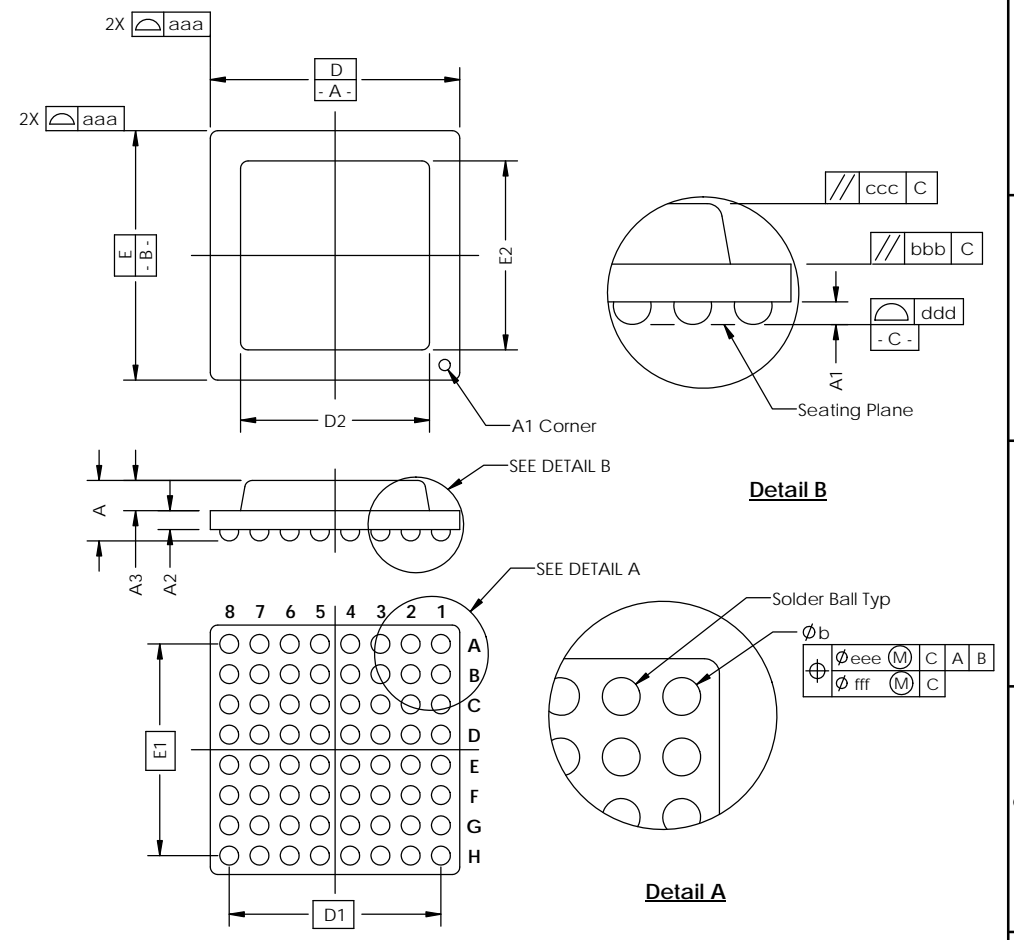
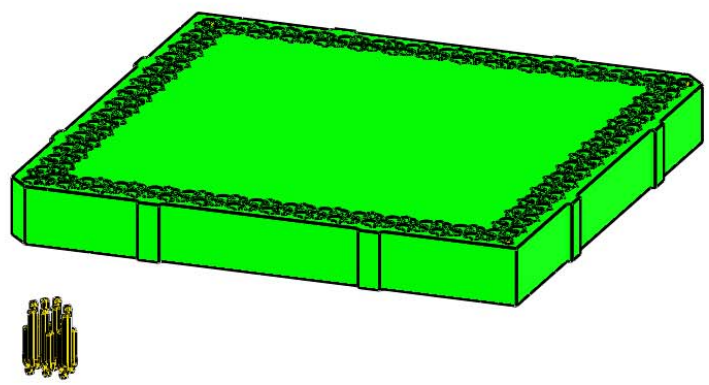
SCKT, 216G4012-0.40, CUSTOM

THIRD ANGLE PROJECTION

SCALE C	MATERIAL SOLIDWORKS	DRAWING NO. 107022-0043	SHEET E
SEE BOM		1 of 2	

SOCKET FOR DEVICES THAT ARE WITHIN THESE SPECIFICATIONS					
Lead Count	N	216	Package Size	D	12.00
Columns	ND	29		E	12.00
Rows	NE	29	Ball Spacing	D1	11.200
Pitch	e	0.40		E1	11.200
Ball Size	b	0.25±0.05	Encapsulant/ Top Size	D2	n/a
Total Thickness	A	n/a		E2	n/a
Ball Height	A1	0.175 MIN	Pattern Style	Full OR Irregular *	
Substrate Thickness	A2	n/a	Perimeter Rows	2	
Top Thickness	A3		Center Array	n/a	
Form Tolerances					
Edge	aaa	0.10	Bottom	ddd	0.08
Substrate	bbb	0.10	Position	eee	0.10
top	ccc	0.10	Position	fff	0.05

All dimensions are in millimeters.
* See footprint for pattern details.



Generic Representation with Full Grid Array

<small>THE INFORMATION CONTAINED IN THIS DRAWING IS THE SOLE PROPERTY OF R&D INTERCONNECT SOLUTIONS. ANY REPRODUCTION IN PART OR WHOLE WITHOUT THE WRITTEN PERMISSION OF R&D INTERCONNECT SOLUTIONS IS PROHIBITED.</small>			
<small>UNLESS OTHERWISE SPECIFIED - DIMENSIONS ARE IN MILLIMETERS - DIMS APPLY AFTER PLATING TOLERANCES UNLESS OTHERWISE NOTED:</small>		7115 NORTHLAND TERRACE, SUITE 400 BROOKLYN PARK, MN 55428 (763) 509-0066	
<small>DECIMALS X.X ±0.25 X.XX ±0.10 X.XXX ±0.050</small>	SCKT, 216G4012-0.40, CUSTOM		
<small>LEGEND:</small> NOTE CALLOUT REVISION CHANGE ITEM NUMBER	<small>DATE</small> C	<small>DRAWING BY</small> SOLIDWORKS	<small>REV</small> E
<small>SCALE</small> 	107022-0043		<small>SHEET</small> 2 of 2
See Page 1			