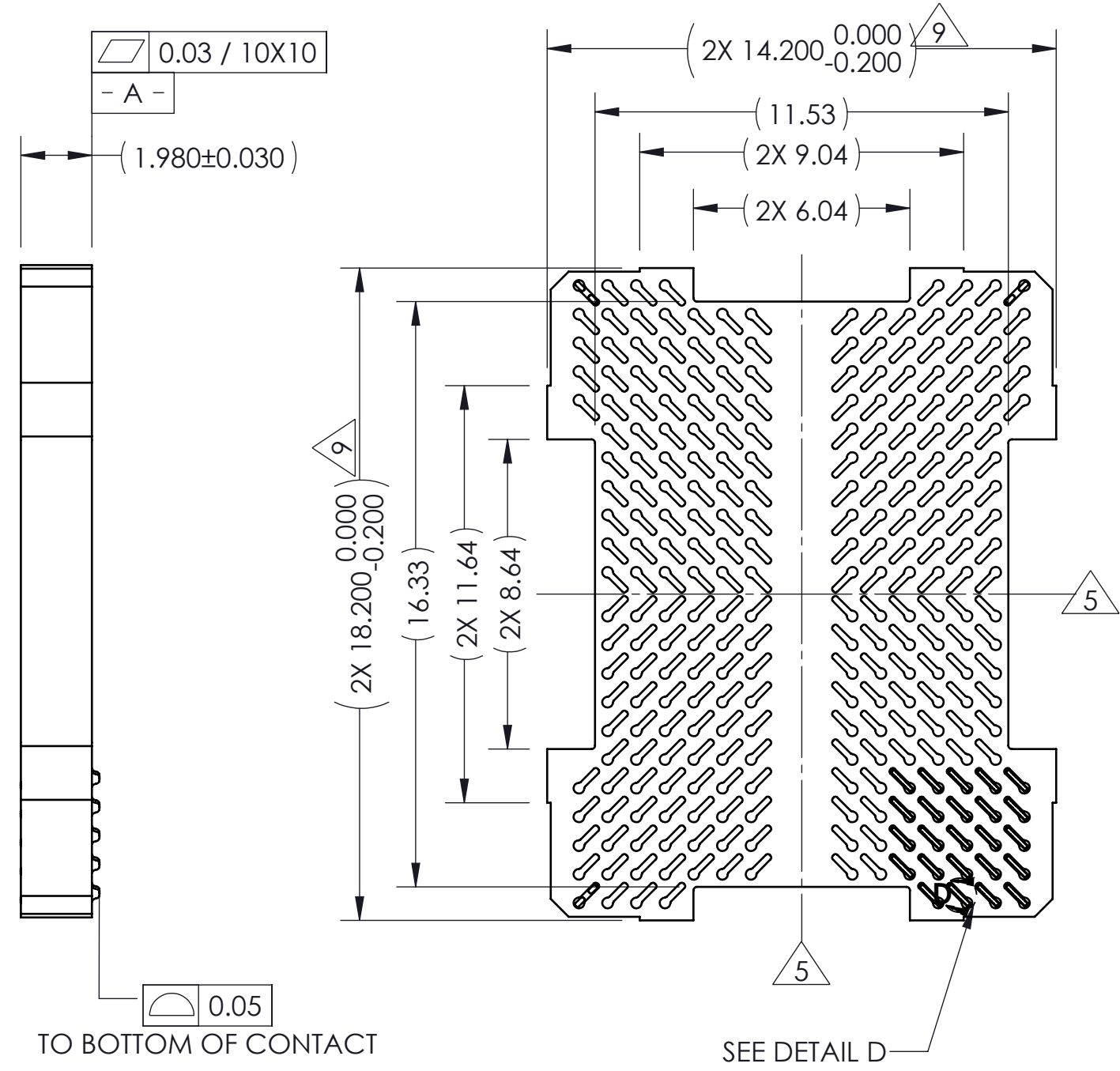
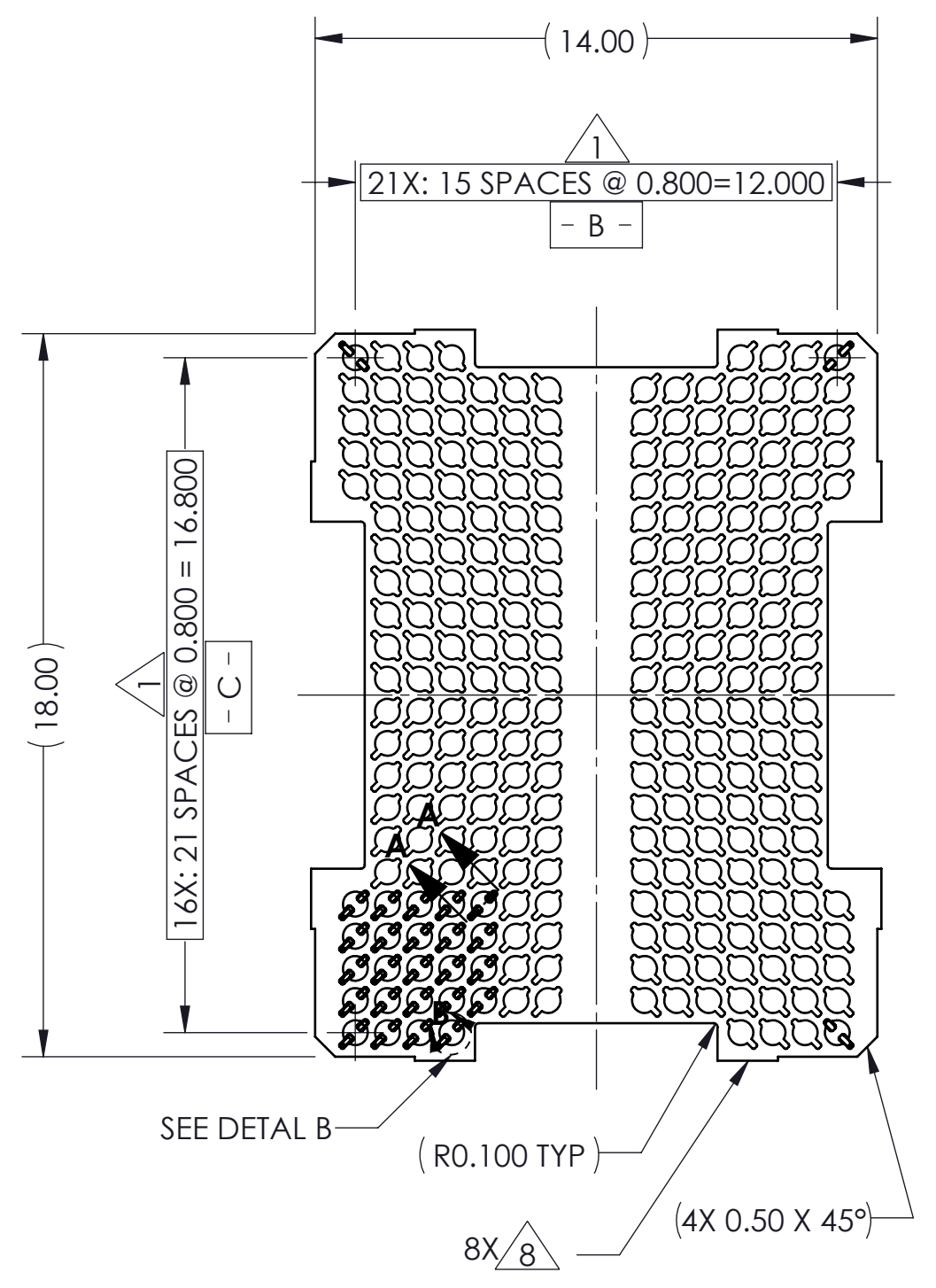
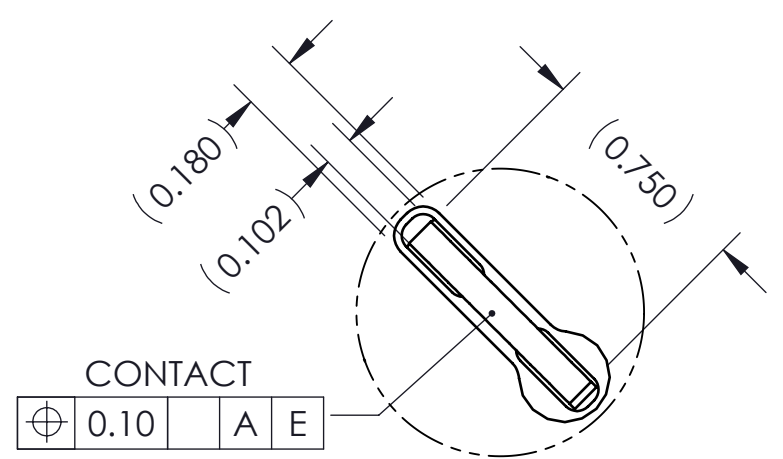


REV	ECO	BY	DESCRIPTION	APV	DATE
A	31546	RS	Initial Design	NSJ	09/15/14

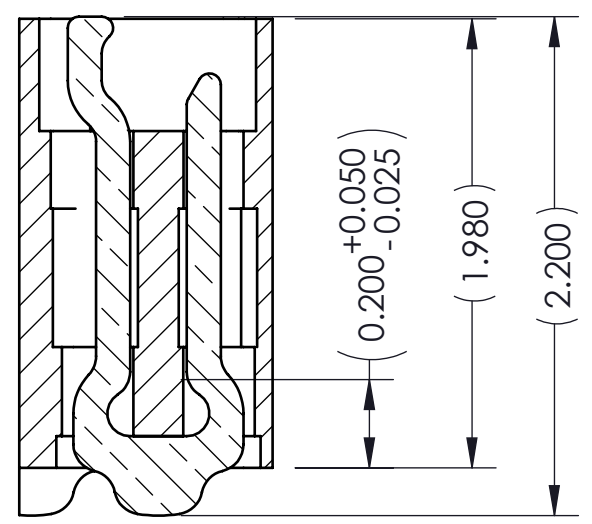


- Notes:
1. Dimension locates center of slot/contact.
 2. Unless otherwise noted, all features located $\oplus 0.10$ A B C
 3. Reference HSI0 Technologies, LLC. specification 700001-0001 for solder attachment.
 4. Reference HSI0 Technologies specification 700001-0002 for application notes.
 5. - E - Center of contact pattern.
 6. All contact/slot not shown to minimize file size.
 8. Tooling marks permitted. Maximum 0.10 protrusion (shown).
 9. Dimension includes 0.10 protrusion.
 10. Datums - B - and - C - are determined by $\phi 0.620$ opening in corner slots.

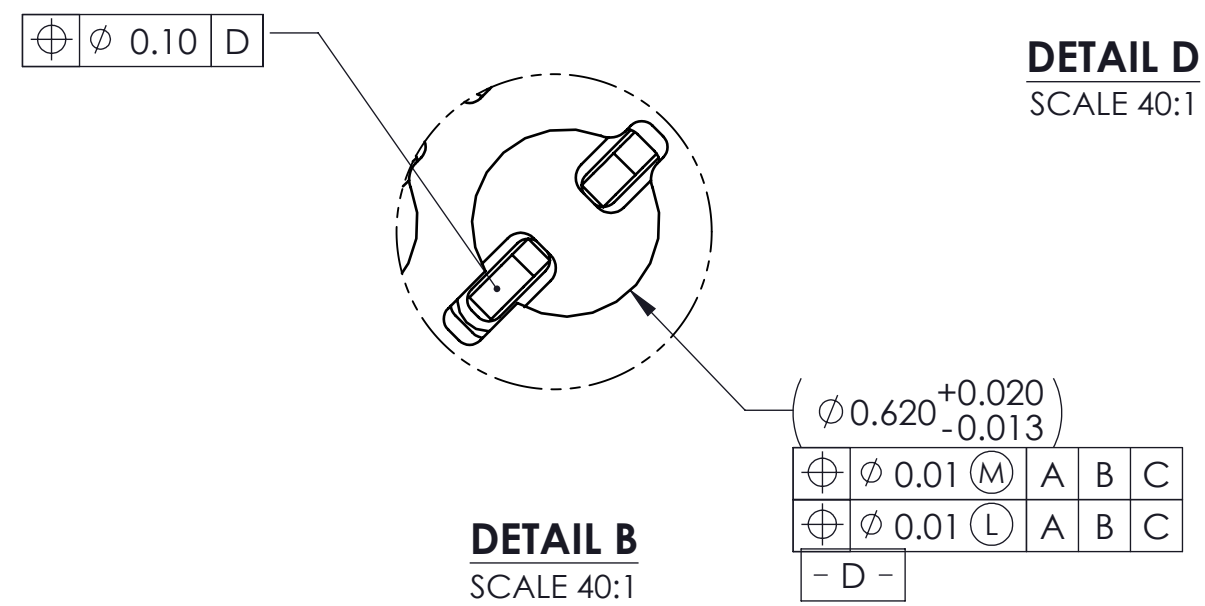


DETAIL D
SCALE 40:1

PART NUMBER	DESCRIPTION
107206-0013	SCKT, 272G80 14.0X18.0-0.80
107207-0013	CS, 272G80 14.0X18.0-0.80
103864-0116	PRESS, DEVICE INSERTION 14.00X18.00 (SOLD SEPARATELY)
104553-0354	STENCIL FLEX, 272G80 14.0X18.0-0.80 (SOLD SEPARATELY)
105900-0004	EXTRACTION TOOL, 4X53 (SOLD SEPARATELY)



SECTION A-A
SCALE 30:1
VIEW ROTATED 45° CCW



DETAIL B
SCALE 40:1

HSIO technologies
PROPRIETARY AND CONFIDENTIAL

THE INFORMATION CONTAINED IN THIS DRAWING IS THE SOLE PROPERTY OF HSI0 TECHNOLOGIES, LLC. ANY REPRODUCTION IN PART OR AS A WHOLE WITHOUT THE WRITTEN PERMISSION OF HSI0 TECHNOLOGIES, LLC IS PROHIBITED.

UNLESS OTHERWISE SPECIFIED:
DIMENSIONS ARE IN MILLIMETERS
TOLERANCES:
ANGULAR: ± 1°
X.X ±0.25
X.XX ±0.10
X.XXX ±0.050

INTERPRET GEOMETRIC TOLERANCING PER:
MATERIAL: SEE B.O.M
FINISH:
DO NOT SCALE DRAWING

NAME	DATE
DRAWN: RS	09/15/14
CHECKED: NSJ	09/15/14

LEGEND:
 △ NOTE CALLOUT
 □ REVISION CHANGE
 ○ ITEM NUMBER

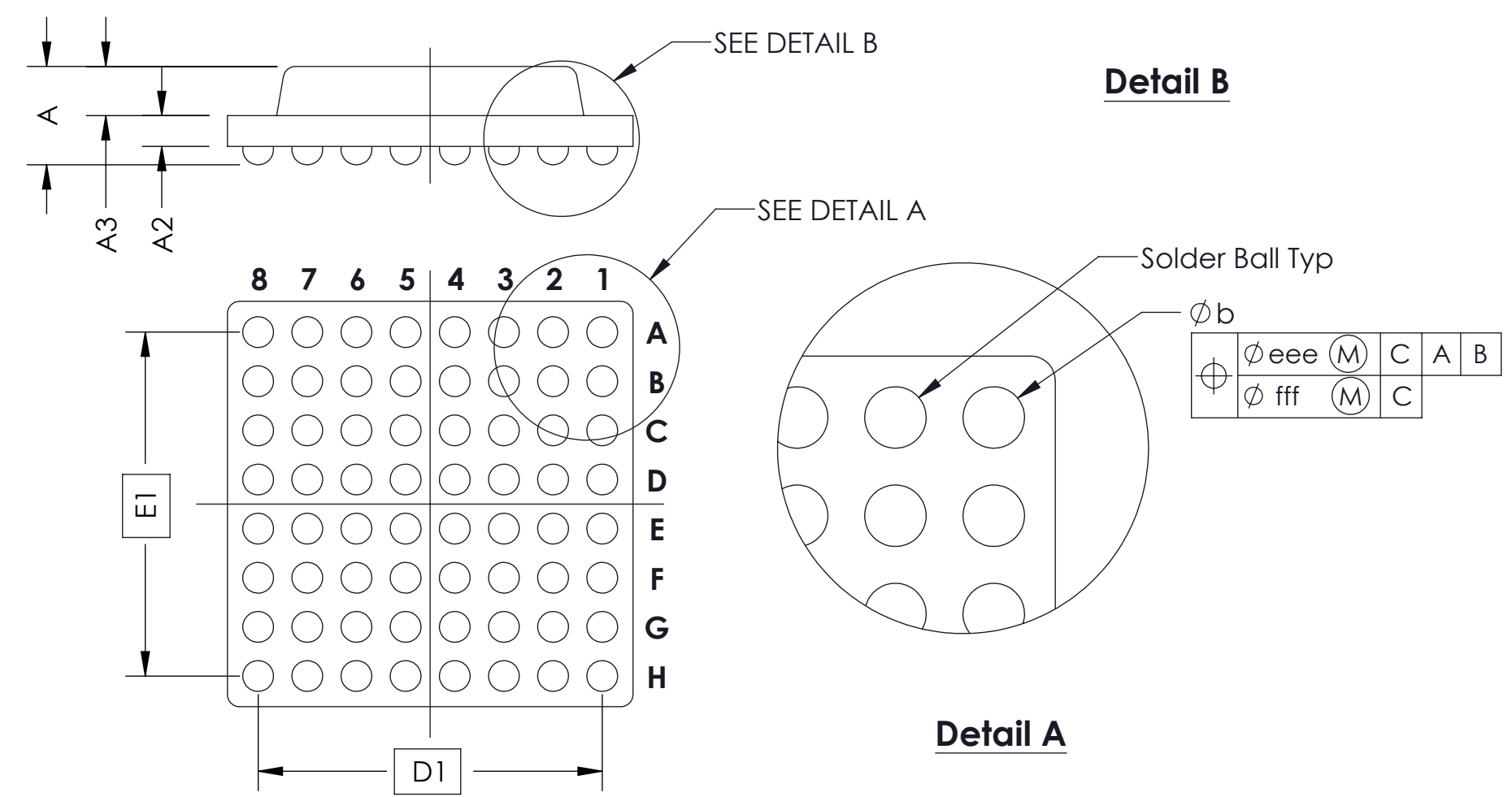
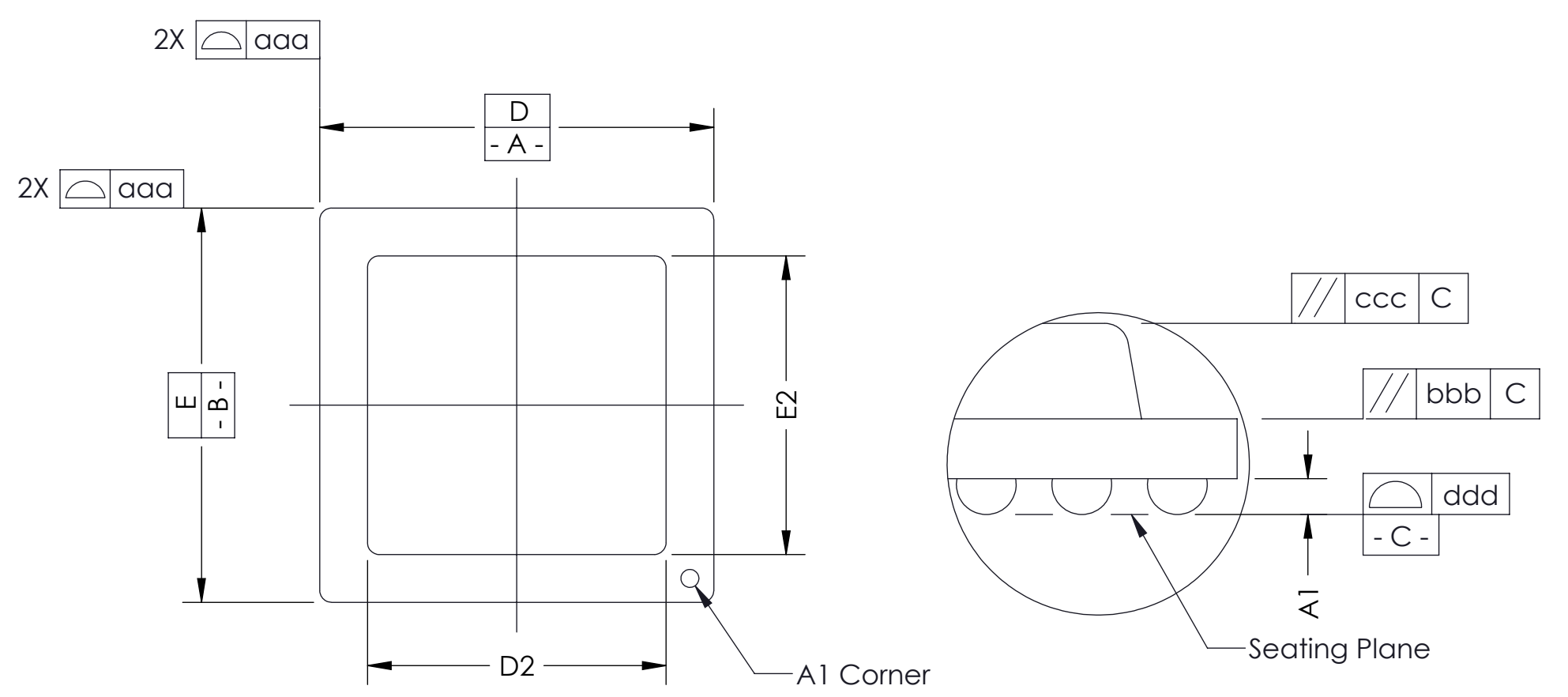
HSIO TECHNOLOGIES, LLC.
13300 67th AVENUE NORTH
MAPLE GROVE, MINNESOTA 55311
763-447-6260

TITLE:
SCKT, 272G80
14.0X18.0-0.80

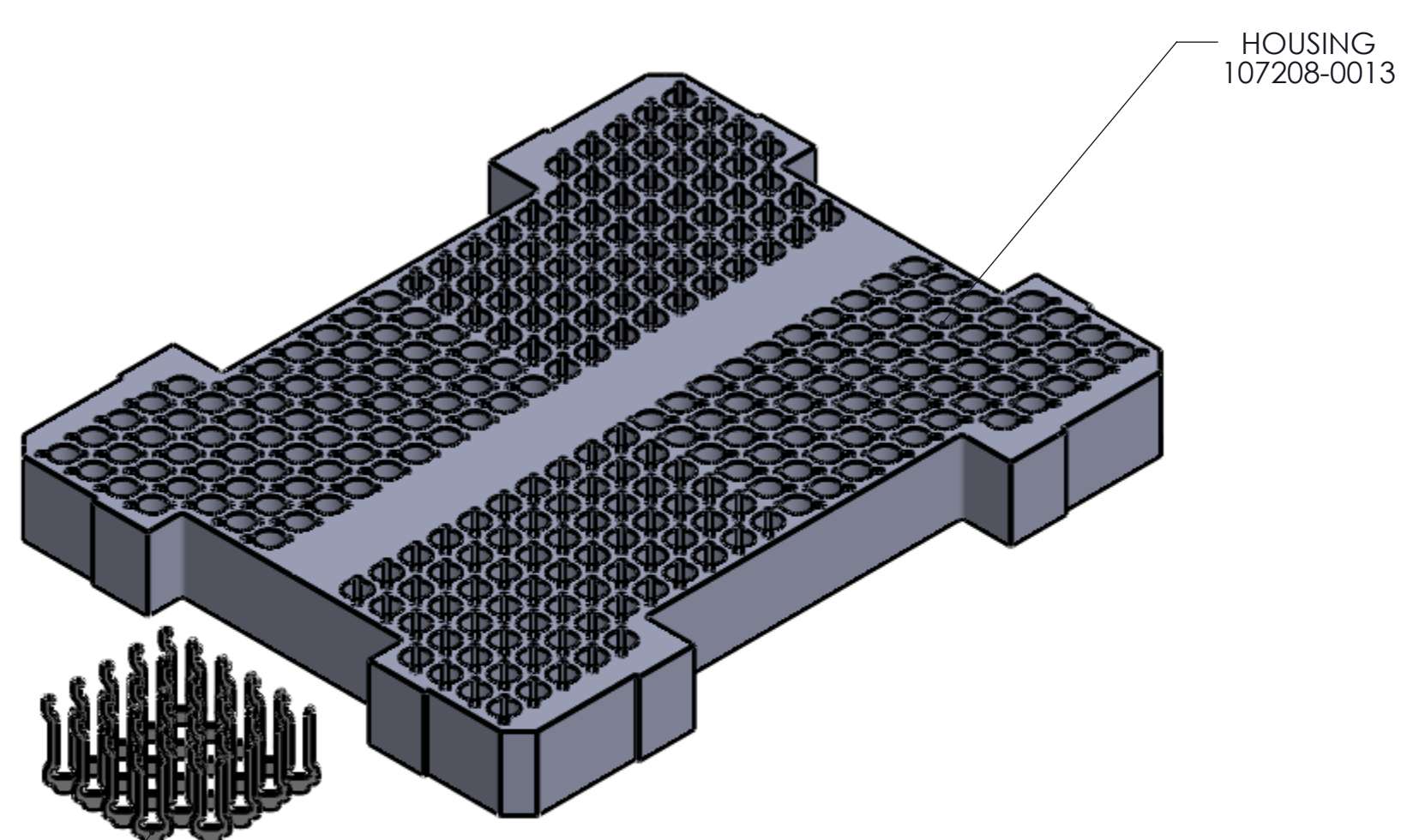
DWG. NO. **107206-0013** REV **A**

SCALE: 5:1 SIZE: C SHEET 1 OF 2

SOCKET FOR DEVICES THAT ARE WITHIN THESE SPECIFICATIONS				
Lead Count	N	272	Package Size	D 14.00
Columns	ND	14		E 18.00
Rows	NE	22	Ball Spacing	D1 12.000
Pitch	e	0.80		E1 16.800
Ball Size	b	0.55±0.05	Encapsulant/ Top Size	D2 N/A
Total Thickness	A	1.13±0.10		E2 N/A
Ball Height	A1	0.23 MIN	Pattern Style	IRREGULAR
Substrate Thickness	A2	0.90±0.10	Perimeter Rows	N/A
Top Thickness	A3		Center Array	N/A
Form Tolerances				
Edge	aaa	0.20	Bottom	ddd 0.15
Substrate	bbb	0.20	Position	eee 0.20
Top	ccc	0.20	Position	fff 0.10
* See footprint for pattern details. All dimensions are in millimeters.				



Generic Representation with Full Grid Array



CONTACT
104468-0017

<p>HSIO technologies PROPRIETARY AND CONFIDENTIAL</p> <p>THE INFORMATION CONTAINED IN THIS DRAWING IS THE SOLE PROPERTY OF HSIO TECHNOLOGIES, LLC. ANY REPRODUCTION IN PART OR AS A WHOLE WITHOUT THE WRITTEN PERMISSION OF HSIO TECHNOLOGIES, LLC IS PROHIBITED.</p>	UNLESS OTHERWISE SPECIFIED:	NAME	DATE	HSIO TECHNOLOGIES, LLC. 13300 67th AVENUE NORTH MAPLE GROVE, MINNESOTA 55311 763-447-6260	
	DIMENSIONS ARE IN MILLIMETERS	DRAWN	RS		09/15/14
	TOLERANCES:	CHECKED	NSJ	09/15/14	TITLE: SCKT, 272 G80 14.0X18.0-0.80
	ANGULAR: ± 1°	LEGEND:		DWG. NO. 107206-0013	
X.X ±0.25	△ NOTE CALLOUT	REV			
X.XX ±0.10	◇ REVISION CHANGE	A			
X.XXX ±0.050	○ ITEM NUMBER	SCALE: 5:1			
INTERPRET GEOMETRIC TOLERANCING PER:	DO NOT SCALE DRAWING		SIZE: C	SHEET 2 OF 2	