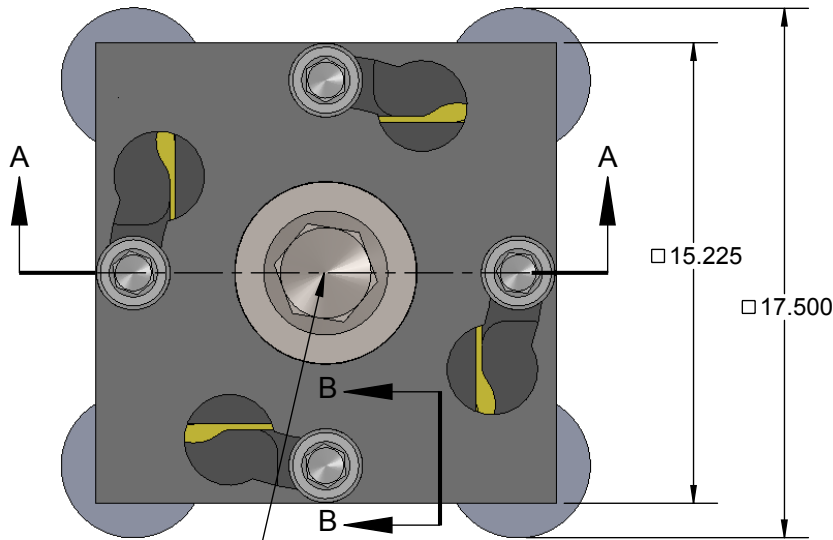


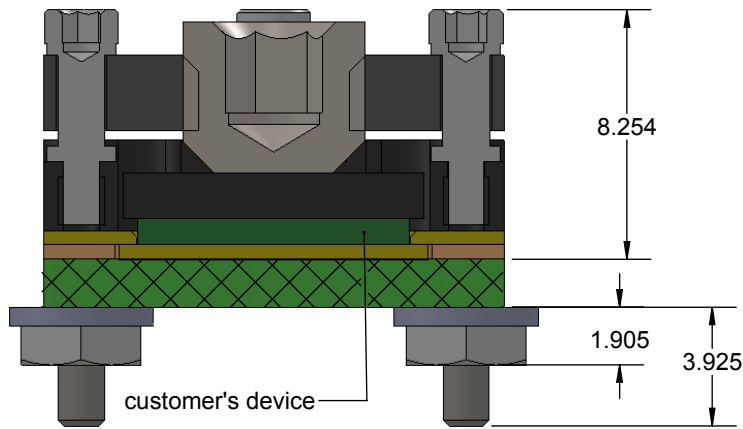
GHz LGA Socket - Direct mount, solderless

Features

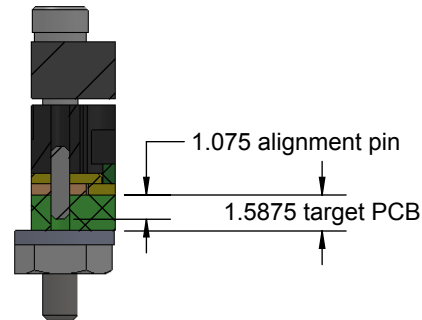
- Directly mounts to target PCB (needs tooling holes) with hardware
- High speed, reliable Elastomer connection
- Minimum real estate required
- Compression plate distributes forces evenly
- Ball guide prevents over compression of elastomer
- Easily removable swivel socket lid



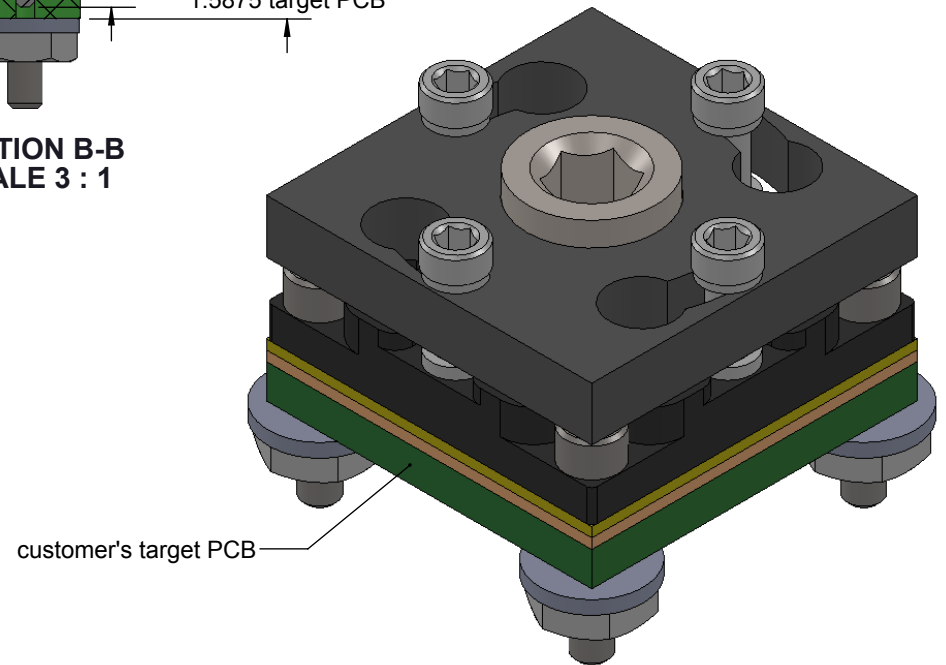
Recommended torque is 1.5 in lb.



SECTION A-A



SECTION B-B
SCALE 3 : 1



Description: Socket for 0.6mm pitch LGA100

Primary dimension units are millimeters, Secondary dimension units are [inches], Weight is in grams.

Tolerances: Hole diameters $\pm 0.03\text{mm}$ [$\pm 0.001"$], Pitches (from true position) $\pm 0.025\text{mm}$ [$\pm 0.001"$], substrate thickness tolerance $\pm 10\%$, all other tolerances $\pm 0.13\text{mm}$ [$\pm 0.005"$] unless stated otherwise. Materials and specifications are subject to change without notice.

SG-LGA-7001 Drawing



Ironwood Electronics, Inc.
Tele: (800) 404-0204
www.ironwoodelectronics.com

Material: Material <not specified>
Finish:
Weight: 5.50

STATUS: Released

ENG: E. Smolentseva

FILE: SG-LGA-7001 Dwg

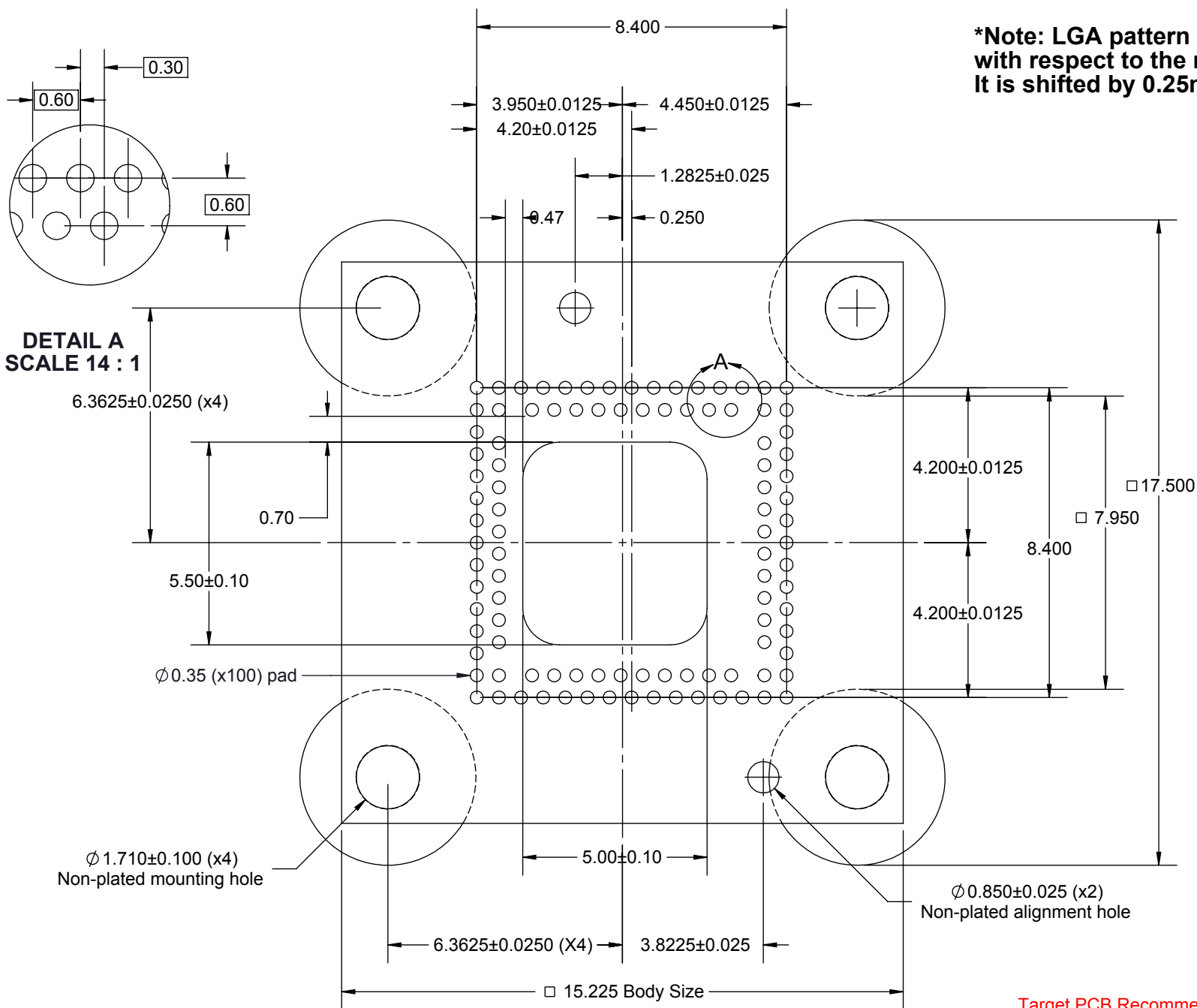
SHEET: 1 OF 4

DRAWN BY: M. Raske

DATE: 01/06/2015

REV. A

SCALE: 4:1




***Note: LGA pattern is not symmetrical with respect to the mounting holes. It is shifted by 0.25mm to the right of center.**

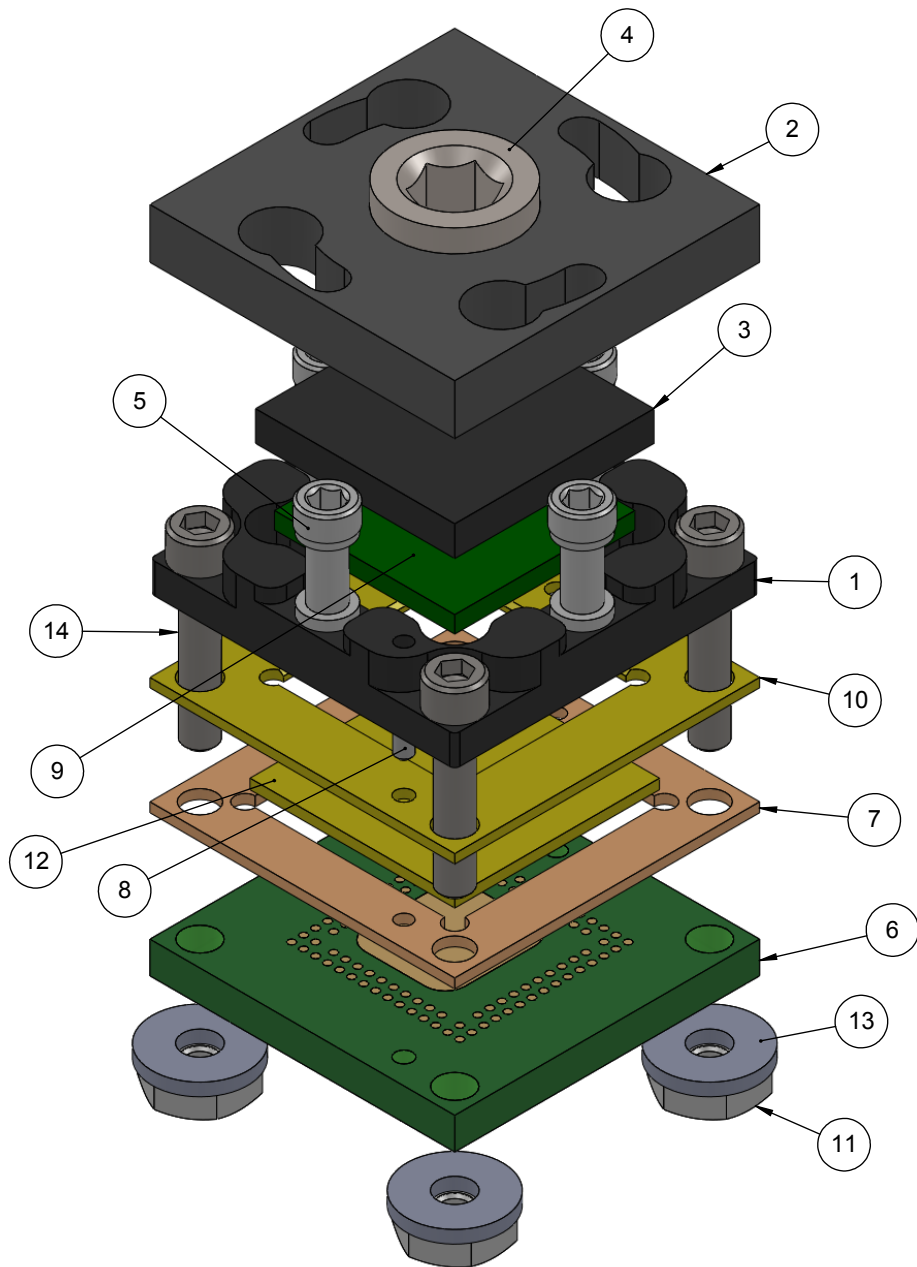
**DETAIL A
SCALE 14 : 1**

Target PCB Recommendations
 Total thickness: 1.6mm min.
 Plating: Gold or Solder finish
 PCB Pad height: Same or higher than solder mask

Description: Recommended PCB Layout

Primary dimension units are millimeters, Secondary dimension units are [inches], Weight is in grams.
 Tolerances: Hole diameters $\pm 0.03\text{mm}$ [$\pm 0.001"$], Pitches (from true position) $\pm 0.025\text{mm}$ [$\pm 0.001"$], substrate thickness tolerance $\pm 10\%$, all other tolerances $\pm 0.13\text{mm}$ [$\pm 0.005"$] unless stated otherwise. Materials and specifications are subject to change without notice.

 SG-LGA-7001 Drawing Ironwood Electronics, Inc. Tele: (800) 404-0204 www.ironwoodelectronics.com	Material: Material <not specified> Finish: Weight: 5.50	STATUS: Released ENG: E. Smolentseva FILE: SG-LGA-7001 Dwg	SHEET: 2 OF 4 DRAWN BY: M. Raske DATE: 01/06/2015	REV. A SCALE: 6.5:1




ITEM NO.	Description	Material
1	GHZ Socket Base 10mm IC 3mm Thk	7075-T6 Aluminum Alloy
2	Socket Lid	7075-T6 Aluminum Alloy
3	Compression Plate 9.95 x 1.5mm	7075-T6 Aluminum Alloy
4	Compression Screw M6x1	Stainless Steel (18-8)
5	#0-80 Shoulder Screw, 0.062" thread length	Stainless Steel (303)
6	Customer's target PCB	FR4
7	Elast Gde 10x10mm 4.725mm Thk	Ultem
8	Alignment Pin 1/32" dia. x 1/8" lng	Chrome Stainless Steel
9	Customer's device	FR4 Standard
10	IC (MLF) Guide	Torlon 4203
11	Nut, #0-80, SS	Stainless Steel (18-8)
12	0.5mm thick, 0.05x 0.05mm pitch, 10mm sqr, Z-axis conductive angled elastomer	20 Micron dia gold plated brass filaments arranged symettrically in a silicon rubber (63.5 degree angle), Thickness: 0.5mm
13	Washer, #0 x .025", Nylon	Nylon 6/6
14	#0-80 X .313 LG, SOC HD CAP SCREW, ALLOY STL, BLK OXIDE	Alloy Steel

Description: Socket Specification

Primary dimension units are millimeters, Secondary dimension units are [inches], Weight is in grams.

Tolerances: Hole diameters $\pm 0.03\text{mm}$ [± 0.001 "], Pitches (from true position) $\pm 0.025\text{mm}$ [± 0.001 "], substrate thickness tolerance $\pm 10\%$, all other tolerances $\pm 0.13\text{mm}$ [± 0.005 "] unless stated otherwise. Materials and specifications are subject to change without notice.

 SG-LGA-7001 Drawing Ironwood Electronics, Inc. Tele: (800) 404-0204 www.ironwoodelectronics.com	Material: Material <not specified> Finish: Weight: 5.50	STATUS: Released	SHEET: 4 OF 4	REV. A
		ENG: E. Smolentseva	DRAWN BY: M. Raske	SCALE: 3.75:1
		FILE: SG-LGA-7001 Dwg	DATE: 01/06/2015	