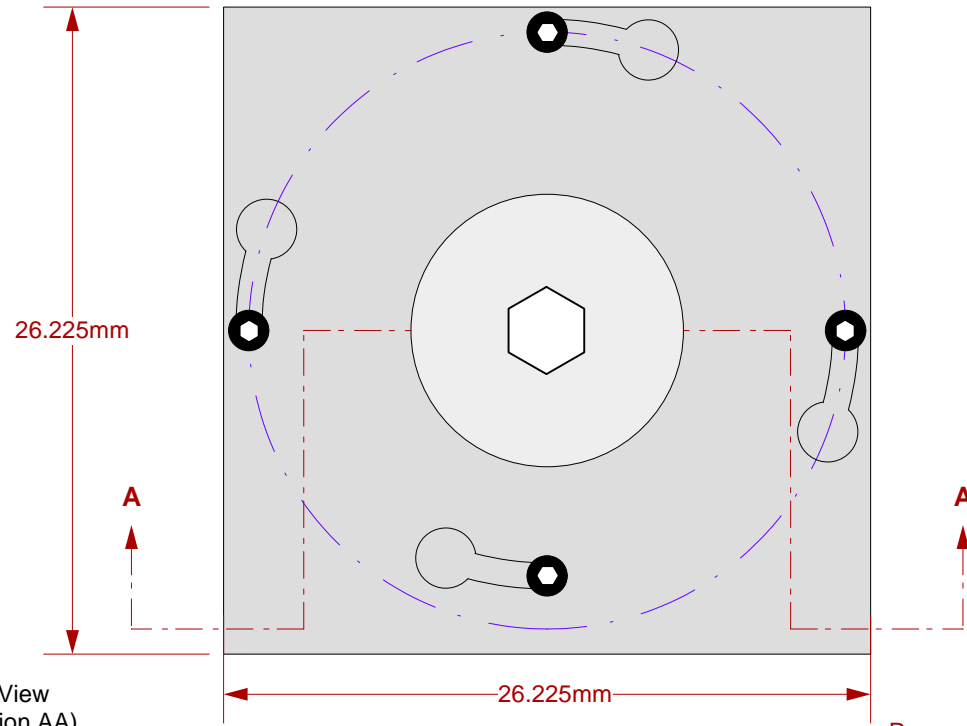
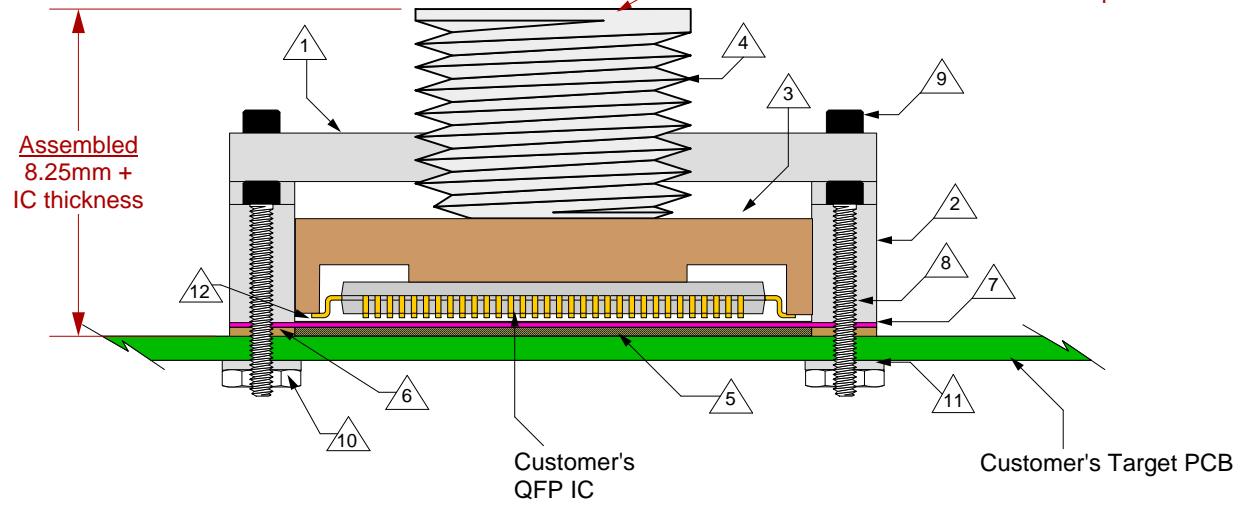


GHz QFP144 Socket - Direct mount, solderless

Top View



Side View
(Section AA)



Features

- Directly mounts to target PCB (needs tooling holes) with hardware.
- High speed, reliable Elastomer connection
- Minimum real estate required
- Compression plate distributes forces evenly
- Easily removable swivel socket lid

- △ 1 Socket Lid: Black anodized Aluminum. Thickness = 2.5mm.
- △ 2 Socket base: Black anodized Aluminum. Thickness = 5mm.
- △ 3 Compression Plate: Ultem 1000
- △ 4 Compression screw: Black anodized 6061 Aluminum. Thickness = 5mm, Hex socket = 5mm.
- △ 5 Elastomer: 20 micron dia gold plated brass filaments arranged symmetrically in a silicone rubber (63.5 degree angle). Thickness = 0.5mm.
- △ 6 Elastomer Guide: Non-clad FR4. Thickness = 0.5mm.
- △ 7 IC Guide: Ultem 1000
- △ 8 Socket base screw: Socket head cap, alloy steel with black oxide finish, 0-80 fine thread, 9.525mm long.
- △ 9 Socket lid screw: Shoulder screw, 18-8 SS, 0-80 fine thread.
- △ 10 Socket base nut: 18-8 Stainless steel, 0-80 fine thread.
- △ 11 Nylon washer: 1.73mm ID; 4.78mm OD 0.64mm thickness.
- △ 12 Lead Guide: Kapton Polyamide 0.003" thick

SG-QFE-7007 Drawing

© 2010 IRONWOOD ELECTRONICS, INC.
11351 Rupp Dr. Ste 400 Burnsville, MN 55337
Tele: (952) 229-8200
www.ironwoodelectronics.com

Status: Released

Scale: -

Rev: B

Drawing: M.A. Fedde

Date: 2/23/10

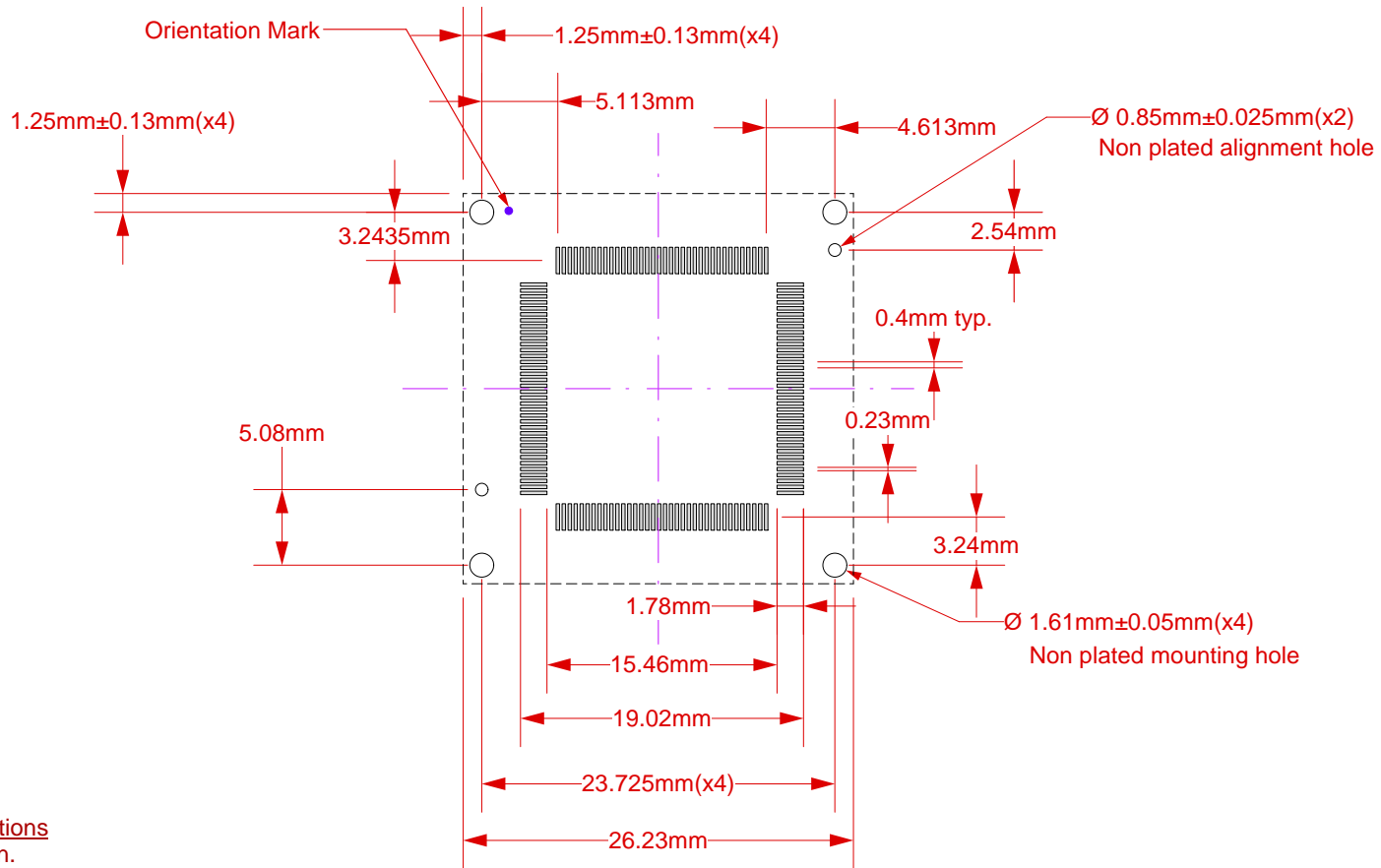
File: SG-QFE-7007 Dwg

Modified: 5/7/2010

All tolerances: $\pm 0.125\text{mm}$ (unless stated otherwise). Materials and specifications are subject to change without notice.

Recommended PCB Layout
Top View

***Note: QFP pattern is not symmetrical with respect to the mounting holes. It is shifted 0.25 mm to the right of center with respect to the mounting holes.**



Target PCB Recommendations

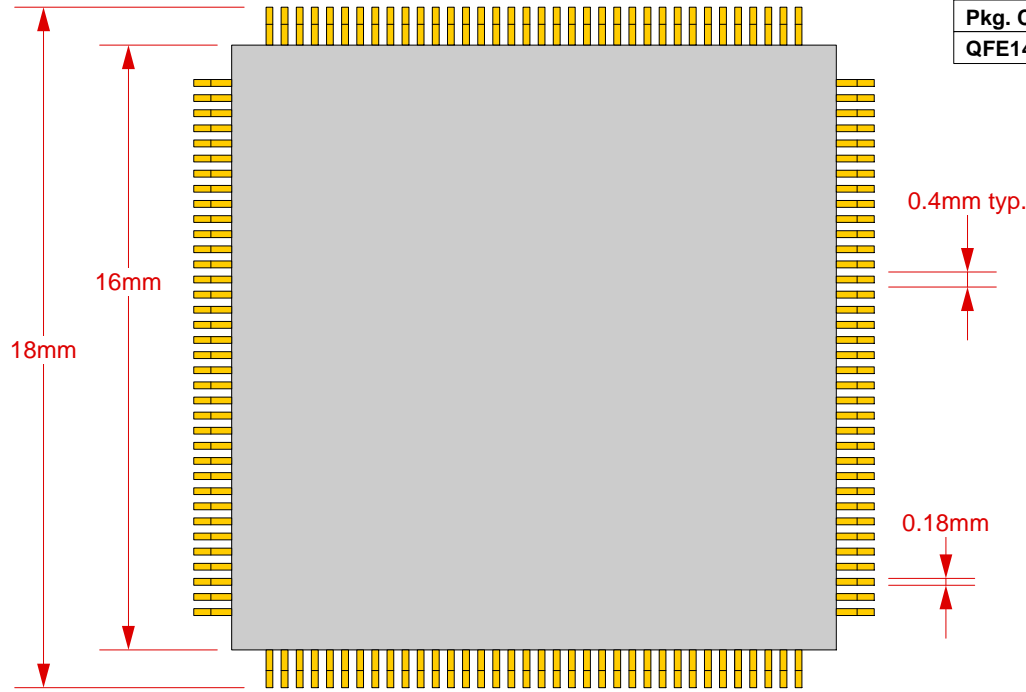
Total thickness: 1.6mm min.
 Plating: Gold or Solder finish
 PCB Pad height: Same or higher than solder mask

NOTE: Steel backing plate may be required based on end user's application

Recommended PCB Layout Tolerances: $\pm 0.025\text{mm}$ [$\pm 0.001''$] unless stated otherwise.

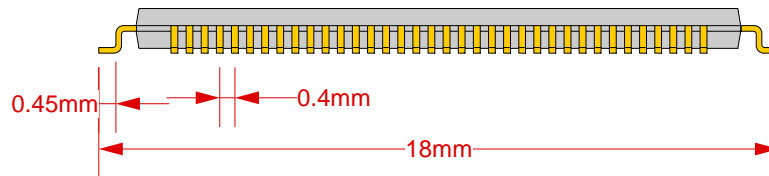
<p>SG-QFE-7007 Drawing</p>	<p>Status: Released</p>	<p>Scale: -</p>	<p>Rev: B</p>
<p>© 2010 IRONWOOD ELECTRONICS, INC. 11351 Rupp Dr. Ste 400 Burnsville, MN 55337 Tele: (952) 229-8200 www.ironwoodelectronics.com</p>	<p>Drawing: M.A. Fedde</p>	<p>Date: 2/23/10</p>	
<p>File: SG-QFE-7007 Dwg</p>		<p>Modified: 5/7/2010</p>	

TOP VIEW
(Reference Only)




Top View

Ironwood Package codes accommodated					
Pkg. Code	Pins	Pitch	Body Size	Tip to tip	foot length
QFE144SJ	144	0.4mm	16mm x 16mm	18mm x 18mm	0.6mm



Side View

	SG-QFE-7007 Drawing © 2010 IRONWOOD ELECTRONICS, INC. 11351 Rupp Dr. Ste 400 Burnsville, MN 55337 Tele: (952) 229-8200 www.ironwoodelectronics.com	Status: Released	Scale: -	Rev: B
		Drawing: M.A. Fedde	Date: 2/23/10	
		File: SG-QFE-7007 Dwg	Modified: 5/10/2010	