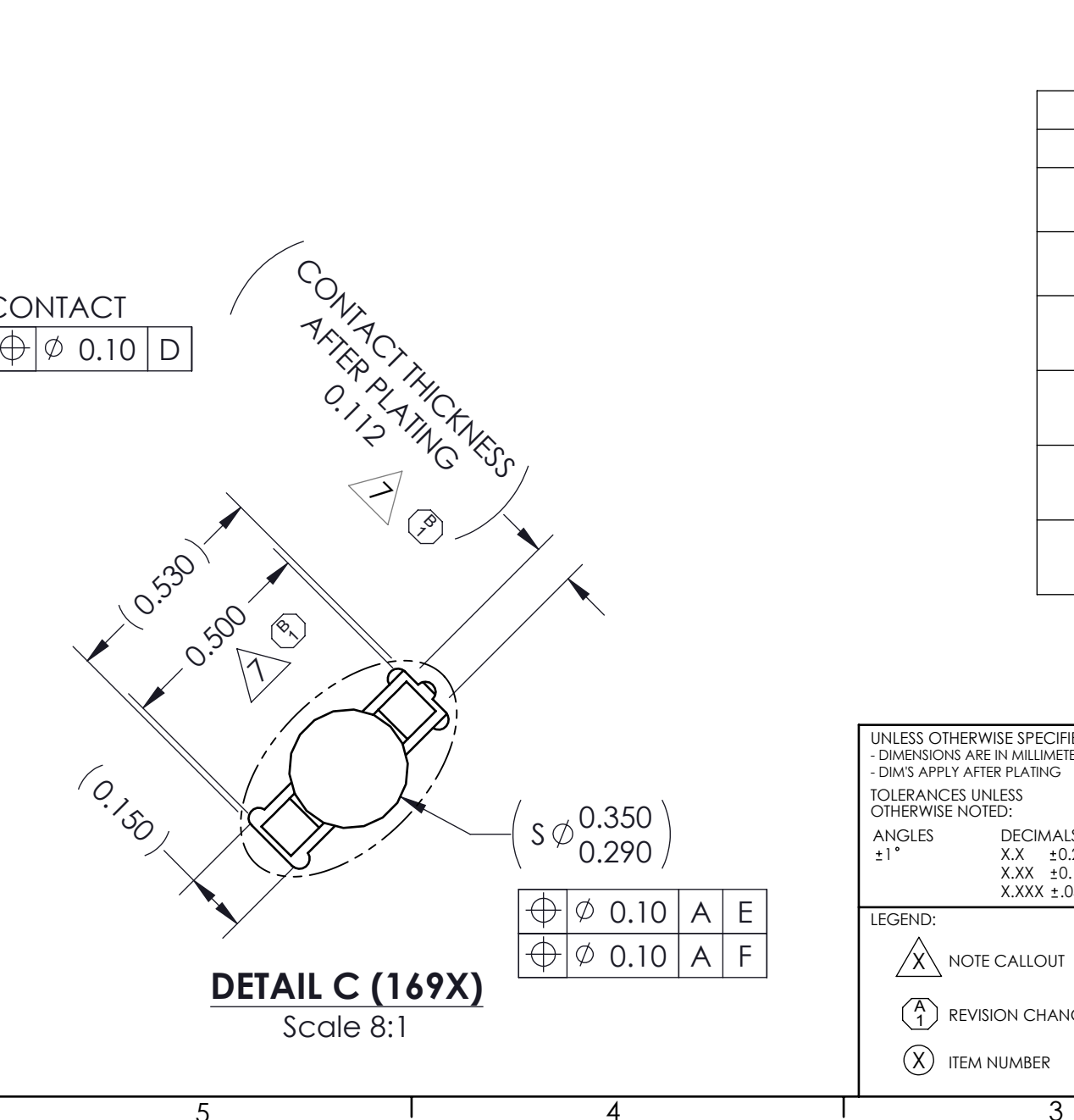
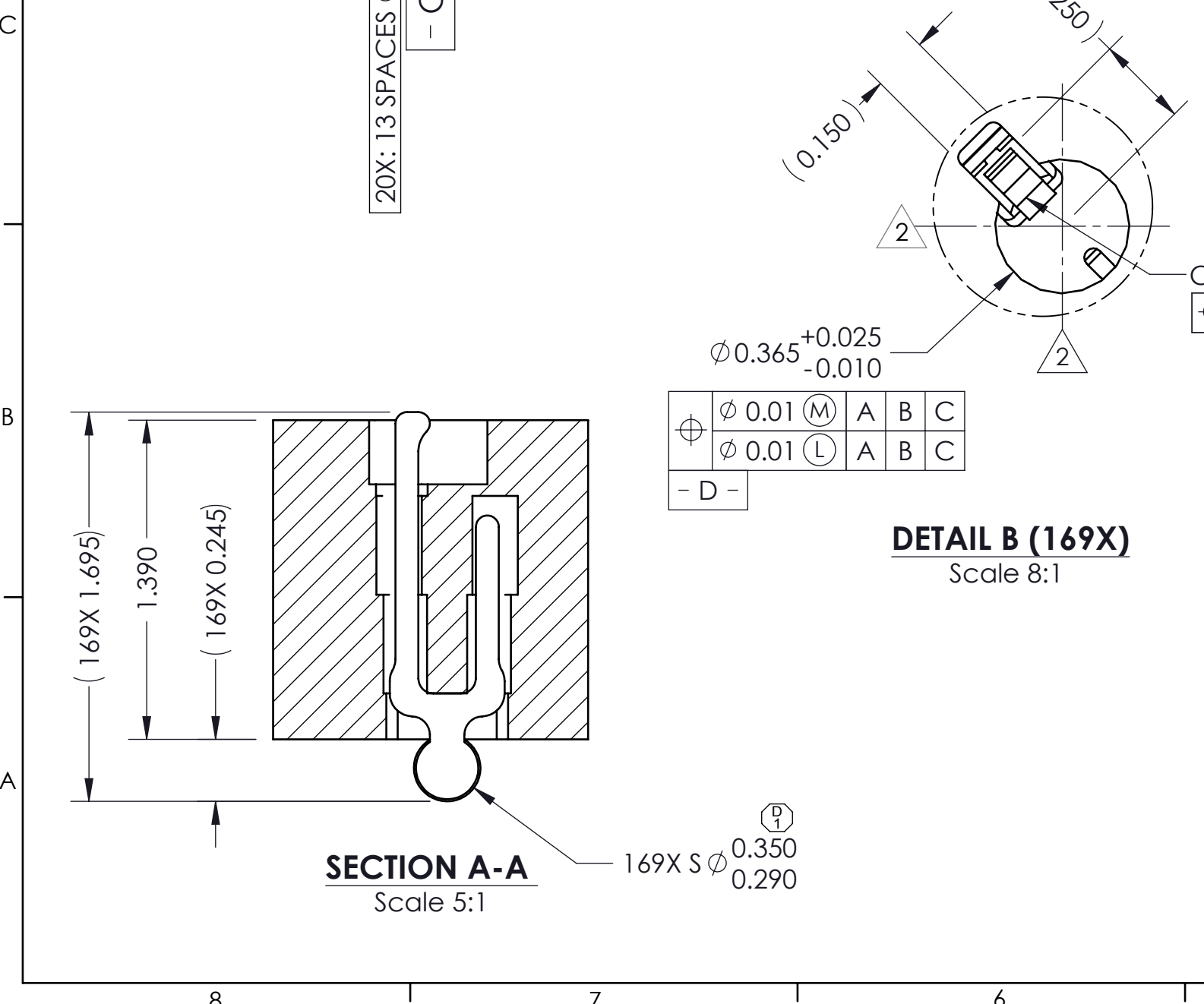


REV	ECO	BY	DESCRIPTION	APV	DATE
A	30168	CW	Initial Design	ET	03/16/10
B	30346	MP	Added Notes 6, 7 and 8	MP	5/13/10
C	30897	JN	Changed Ball Profile Callout	KW	09/15/11
D	31534	RS	Changed Ball Profile Callout	NSJ	08/05/14

- Notes:
- Footprint part number is 104311-0208.
  - Dimension locates center of contact/slot.
  - Press size is 12.0 X 16.0.
  - Reference Cascade Microtech spec 103862-0004 for solder attachment.
  - Reference Cascade Microtech spec 103863-0001 for application notes.
  - E - Center of Ball Pattern.
  - F - Center of Contact.
  - Datums B and C are determined by  $\phi 0.365$  openings on corner slots.



PARTS LIST			
ITEM	QTY	PART NUMBER	DESCRIPTION
-	-	103864-0080	PRESS, DEV INS, 12X16 (SOLD SEPARATELY)
-	-	105900-0004	EXTRACTION TOOL, 4X53 (SOLD SEPARATELY)
-	-	104553-0166	STEN FLEX, 169G40 12X16-0.50 (SOLD SEPARATELY)
1	1	107249-0009	CS, 169G40 12X16-0.50
1.1	1	107247-0009	HSG, 169G40 12X16-0.50
1.2	169	104468-0015	CONTACT, G40, $\phi 0.30$ , TIN, 0.1016

UNLESS OTHERWISE SPECIFIED - DIMENSIONS ARE IN MILLIMETERS - DIM'S APPLY AFTER PLATING - TOLERANCES UNLESS OTHERWISE NOTED:

ANGLES  $\pm 1^\circ$       DECIMALS X.X  $\pm 0.25$  X.XX  $\pm 0.10$  X.XXX  $\pm 0.050$

LEGEND:  
 (X) NOTE CALLOUT  
 (A) REVISION CHANGE  
 (X) ITEM NUMBER

THE INFORMATION CONTAINED IN THIS DRAWING IS THE SOLE PROPERTY OF CASCADE MICROTECH, INC. ANY REPRODUCTION IN PART OR WHOLE WITHOUT THE WRITTEN PERMISSION OF CASCADE MICROTECH, INC. IS PROHIBITED.

CAD GENERATED DRAWING DO NOT MANUALLY UPDATE

DRAWING APPROVALS

NAME	DATE
C. Wymmer	03/11/10
E. Turin	03/16/10

7115 NORTHLAND TERRACE SUITE 400  
 BROOKLYN PARK, MN 55428  
 (763) 509-0066

**SCKT, 169G40 12X16-0.50 W/ SOLDER BALLS**

SCALE	CAD FORMAT	DRAWING NO.	REV.
C	SOLIDWORKS	107250-0009rD	D

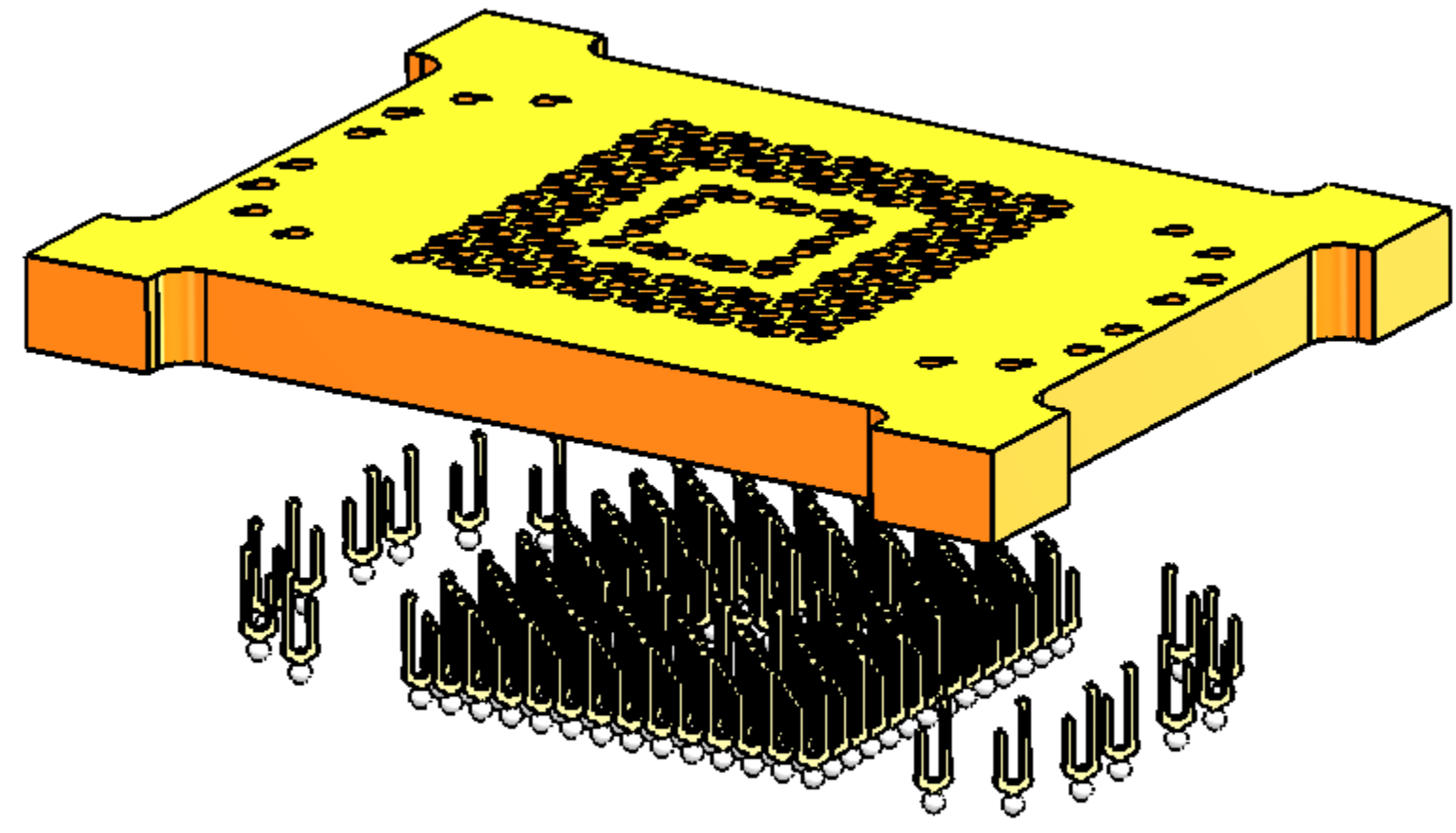
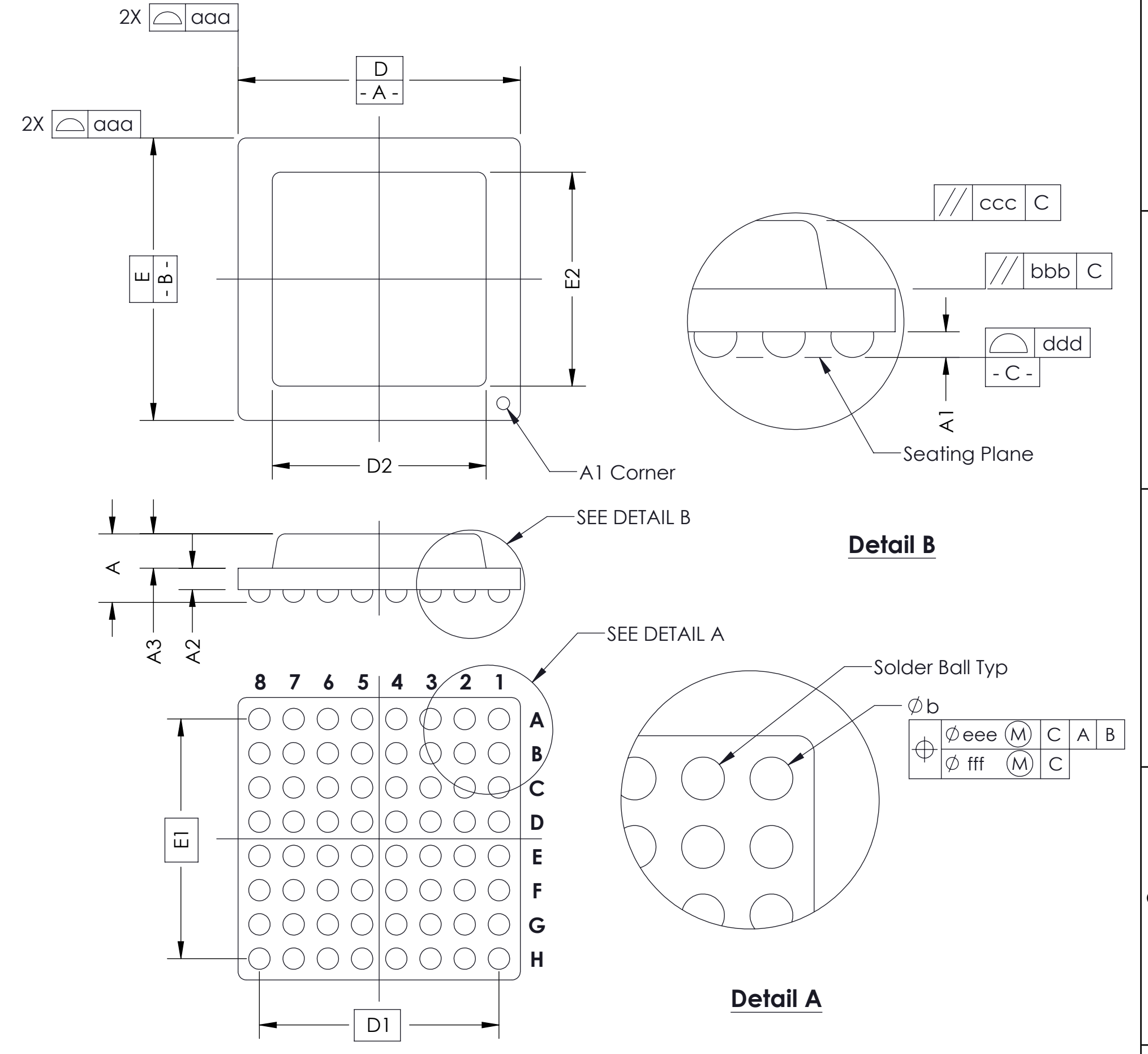
THIRD ANGLE PROJECTION

SEE BOM

1 of 2

SOCKET FOR DEVICES WITHIN THESE SPECIFICATIONS					
Lead Count	<b>N</b>	169	Package Size	<b>D</b>	12.00
Columns	<b>ND</b>	14		<b>E</b>	16.00
Rows	<b>NE</b>	17	Ball Spacing	<b>D1</b>	6.500*
Pitch	<b>e</b>	0.50		<b>E1</b>	13.500*
Ball Size	<b>b</b>	0.30±0.05	Encapsulant/ Top Size	<b>D2</b>	n/a
Total Thickness	<b>A</b>	N/A	Pattern Style	<b>E2</b>	n/a
Ball Height	<b>A1</b>	0.225 min			Irregular*
Substrate Thickness	<b>A2</b>	N/A	Perimeter Rows		n/a
Top Thickness	<b>A3</b>		Center Array		n/a
Form Tolerances					
Edge	<b>aaa</b>	0.20	Bottom	<b>ddd</b>	0.15
Substrate	<b>bbb</b>	0.20	Position	<b>eee</b>	0.20
top	<b>ccc</b>	0.20	Position	<b>fff</b>	0.08

\* See footprint for pattern details.  
All dimensions are in millimeters.



**Generic Representation with Full Grid Array**

<small>THE INFORMATION CONTAINED IN THIS DRAWING IS THE SOLE PROPERTY OF CASCADE MICROTECH, INC. ANY REPRODUCTION IN PART OR WHOLE WITHOUT THE WRITTEN PERMISSION OF CASCADE MICROTECH, INC. IS PROHIBITED.</small>			
<small>UNLESS OTHERWISE SPECIFIED - DIMENSIONS ARE IN MILLIMETERS - DIMS APPLY AFTER PLATING TOLERANCES UNLESS OTHERWISE NOTED: DECIMALS ANGLES    X.X   ±0.25           ±1°    X.XX  ±0.10               X.XXX ±0.050</small>		<b>7115 NORTHLAND TERRACE SUITE 400 BROOKLYN PARK, MN 55428 (763) 509-0066</b>	
<b>SCKT, 169G40 12X16-0.50 W/ SOLDER BALLS</b>			
<small>LEGEND: △ NOTE CALLOUT Ⓜ REVISION CHANGE Ⓧ ITEM NUMBER</small>	<small>SIZE   CAD FORMAT   DRAWING NO.   REV.</small> <b>C       SOLIDWORKS   107250-0009rD   D</b>	<small>SCALE   MATERIAL   SHEET</small> See Page 1   2 of 2	