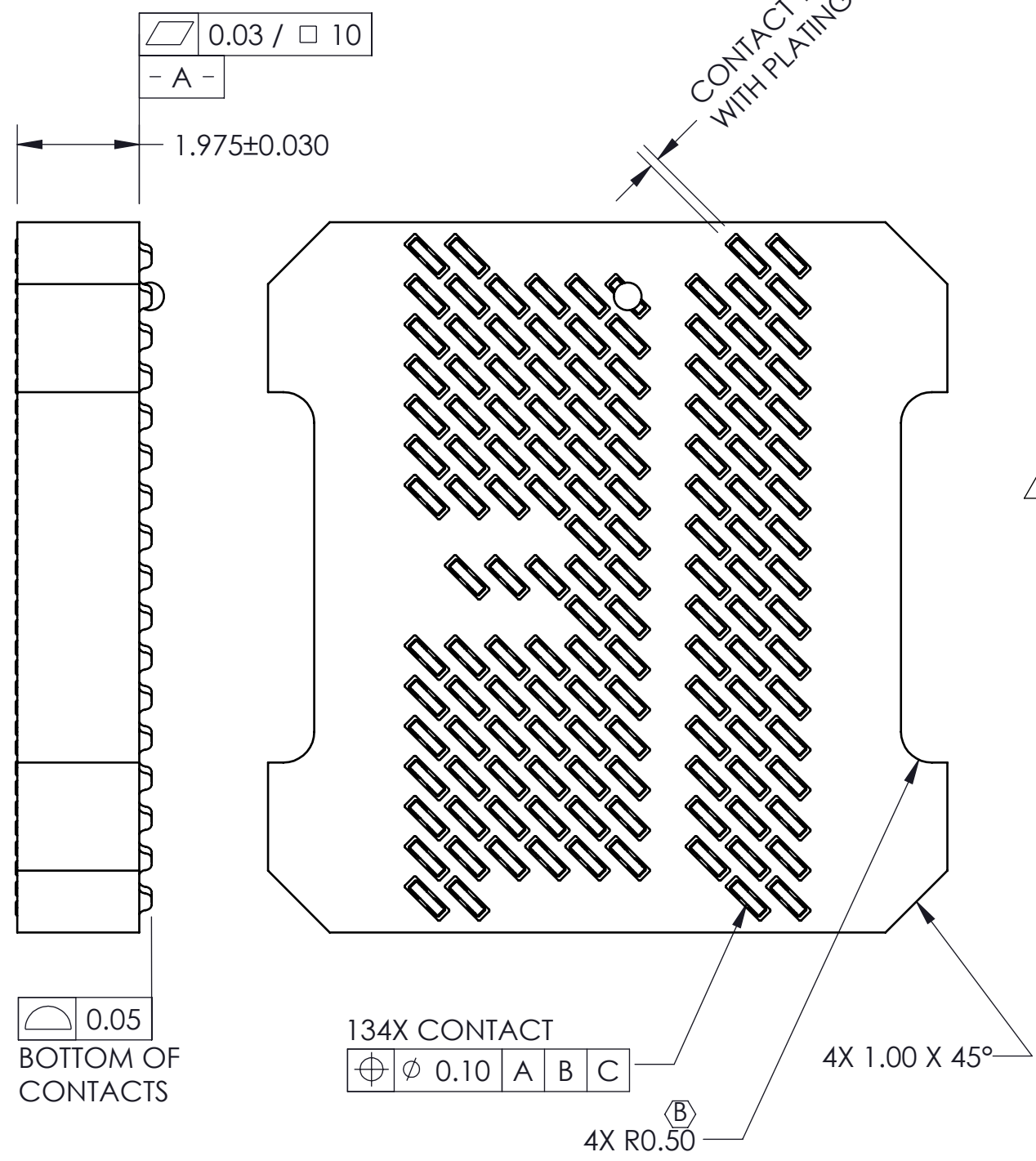
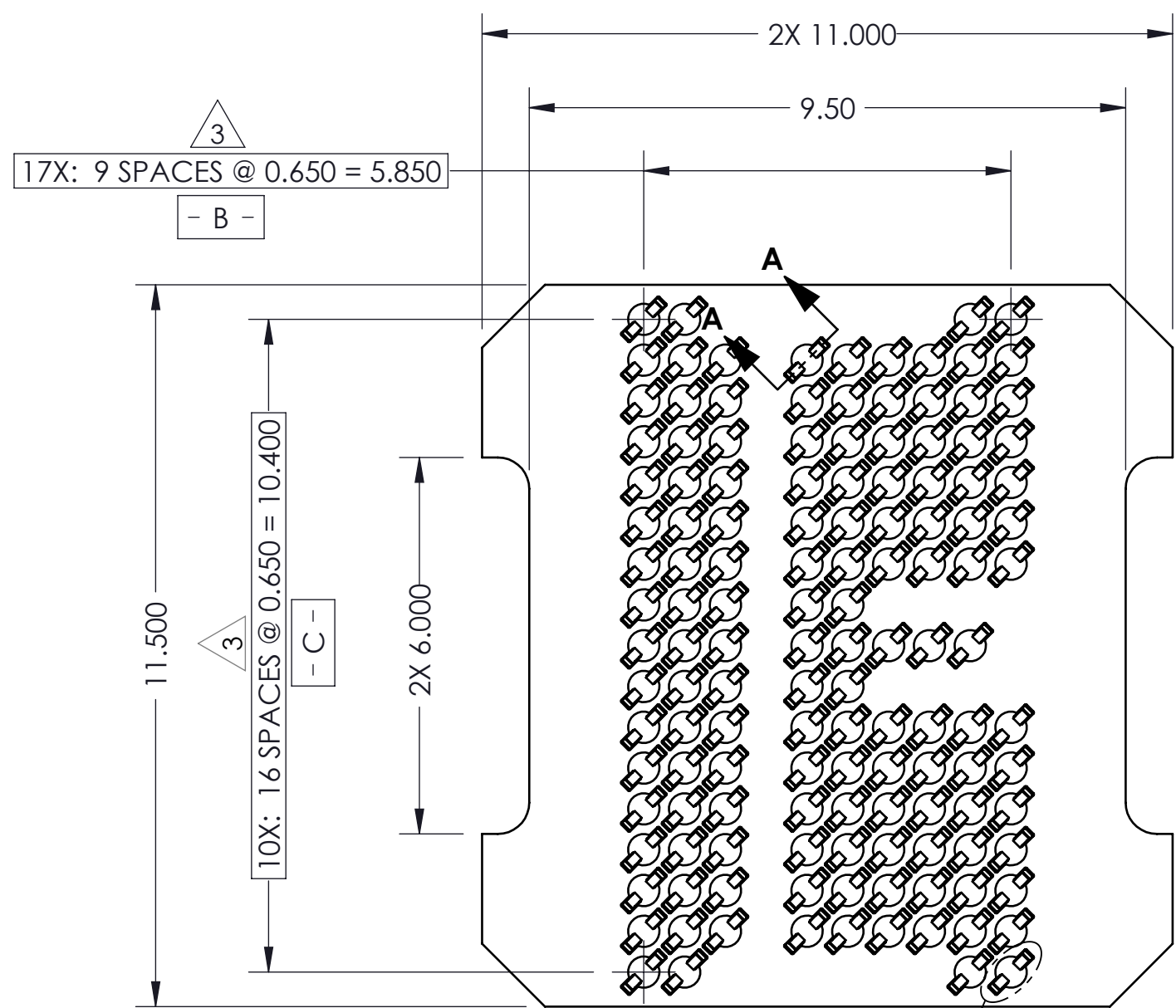


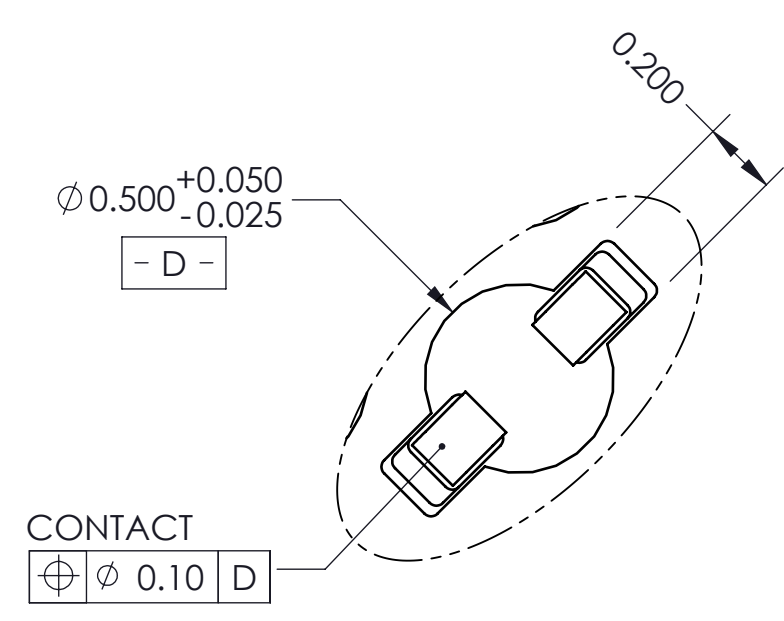
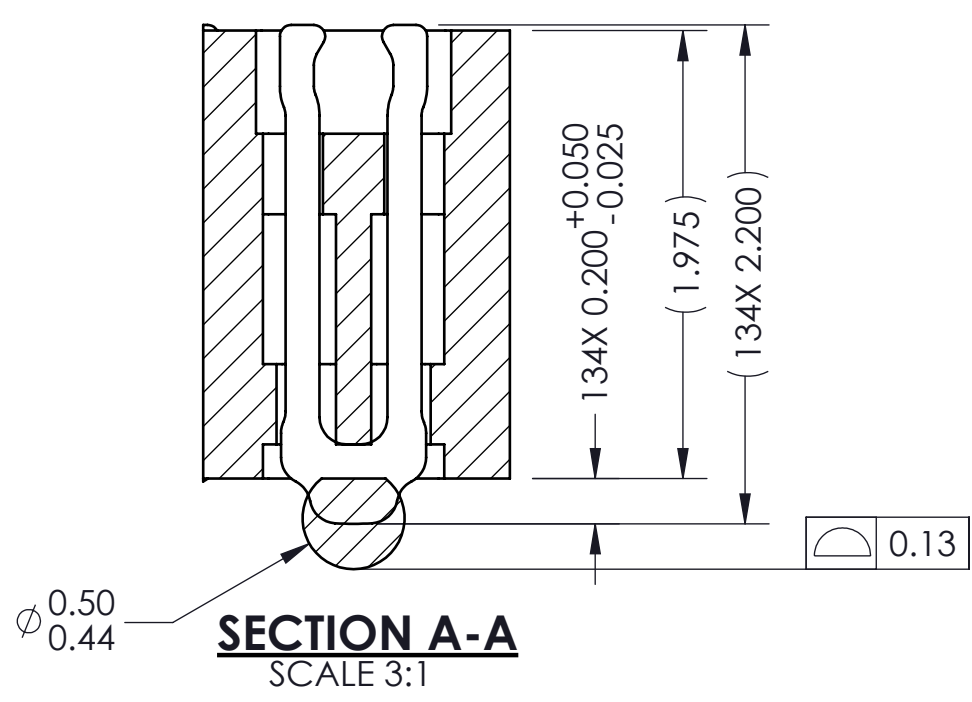
REV	ECO	BY	DESCRIPTION	APV	DATE
A	32016	RS	INITIAL DESIGN	NSJ	11/13/18



Notes:

- Footprint part number is 104311-0258.
- Unless otherwise noted, all features located  $\oplus 0.10$  A B C
- Locates center of contact slots.
- Datums - B - and - C - determined by  $\phi 0.500$  opening in corner slots.

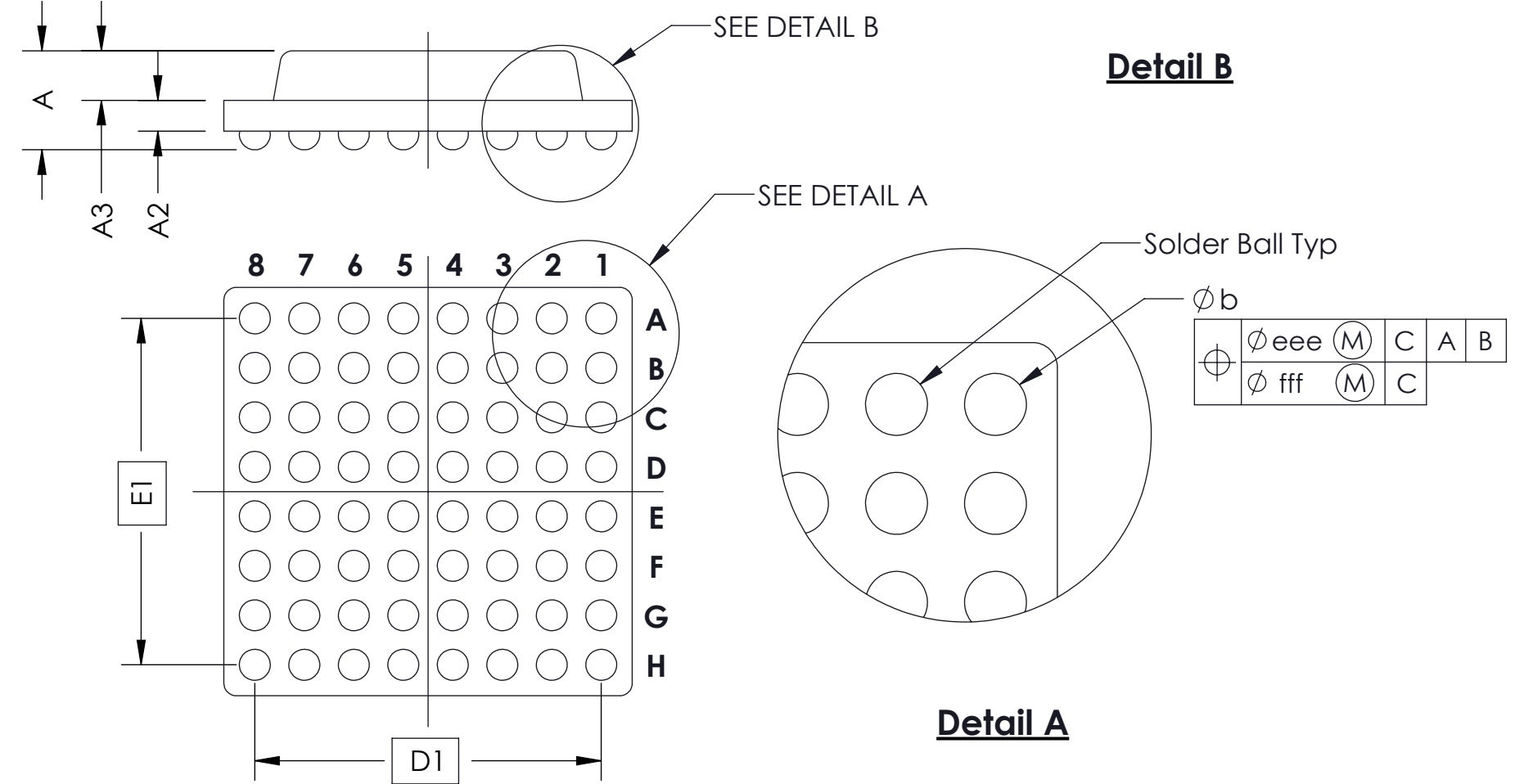
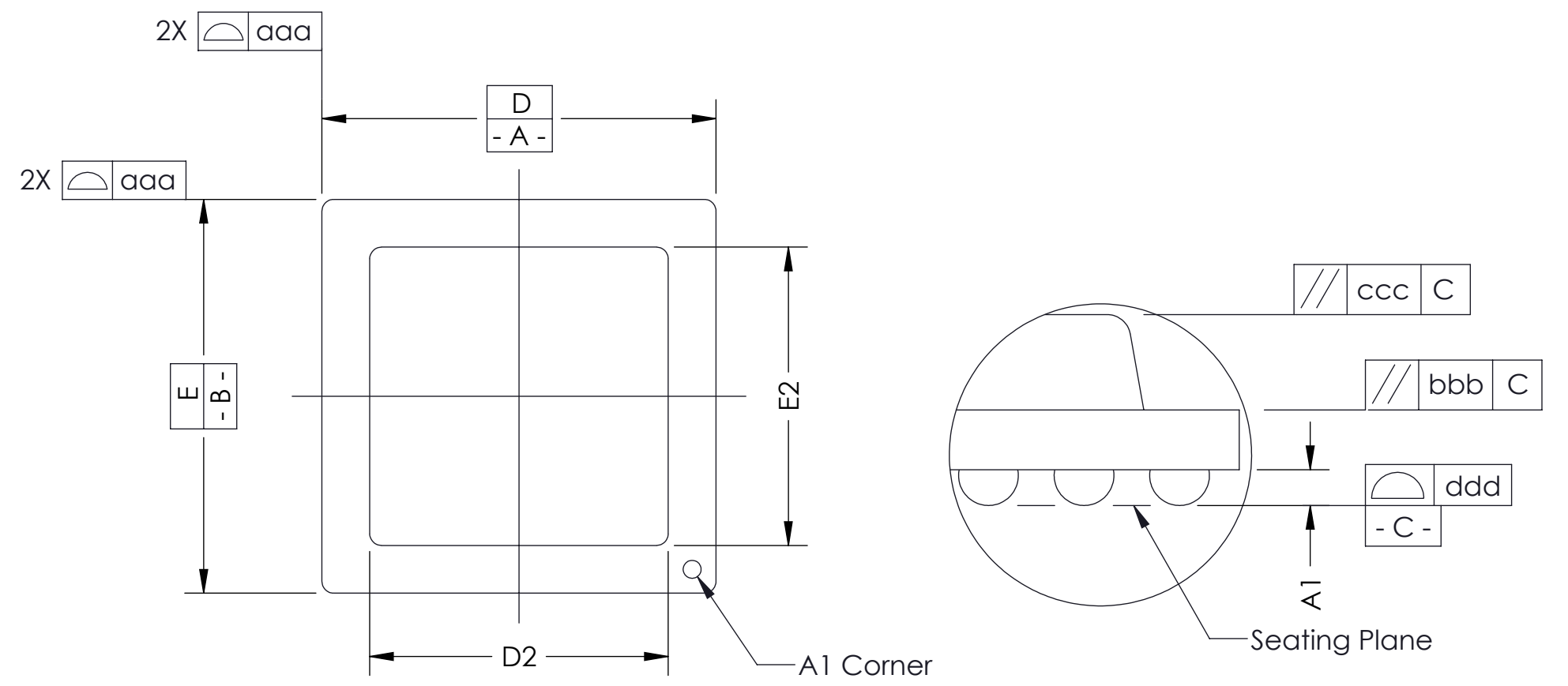
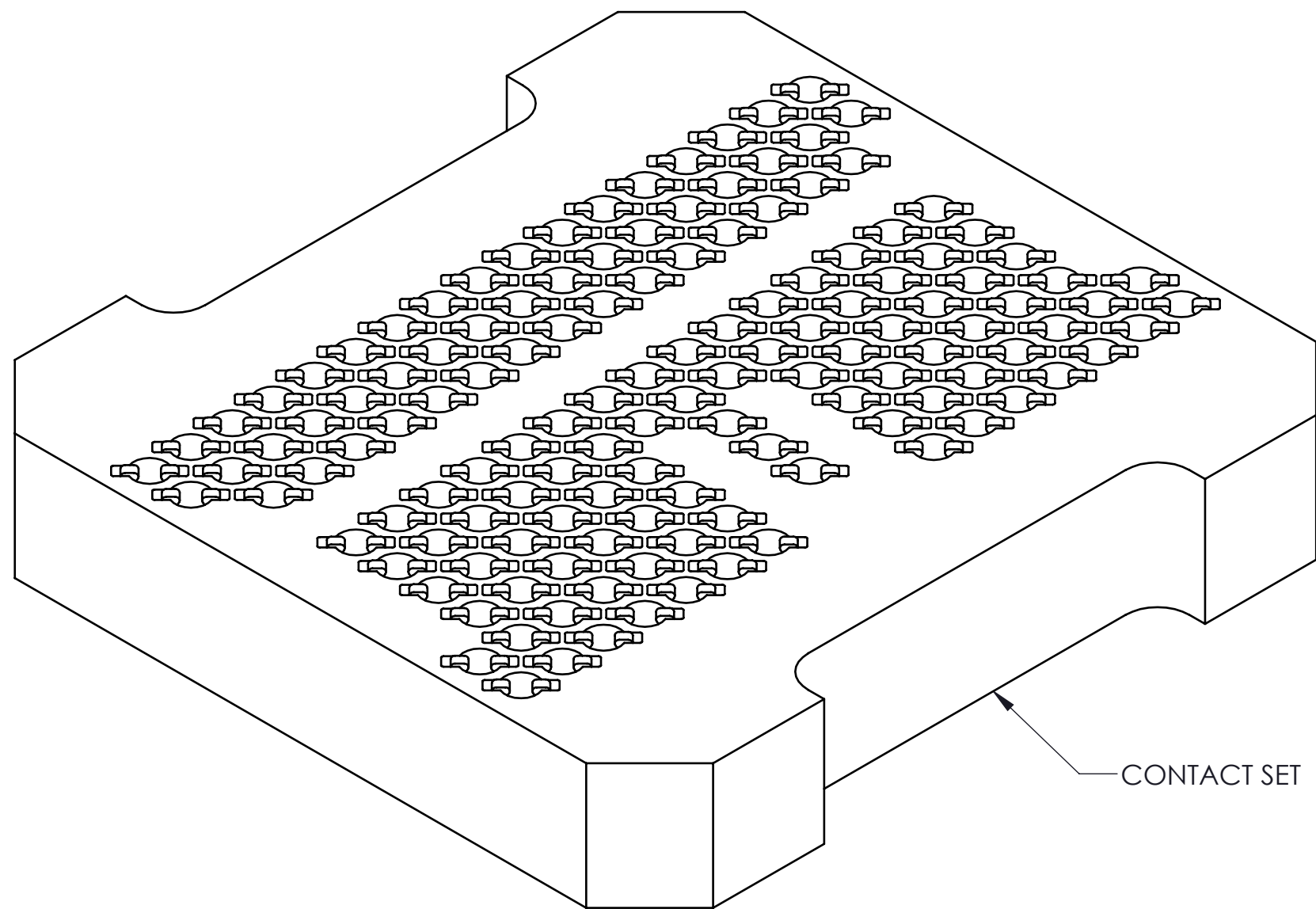
PARTS LIST	
Part Number	Description
106918-0012	SCKT, 134GRY11X11.5-0.65
106919-0012	CS, 134GRY11X11.5-0.65
103864-0061	PRESS, DEV INS, 11X11.5 (SOLD SEP.)
104553-0196	STEN,FLEX, 134GRY11X11.5-0.65 (SOLD SEP.)
105900-0004	EXTRACTION TOOL, 4X53 (SOLD SEP.)



<p><b>HSIO technologies</b> PROPRIETARY AND CONFIDENTIAL</p> <p>THE INFORMATION CONTAINED IN THIS DRAWING IS THE SOLE PROPERTY OF HSIO TECHNOLOGIES, LLC. ANY REPRODUCTION IN PART OR AS A WHOLE WITHOUT THE WRITTEN PERMISSION OF HSIO TECHNOLOGIES, LLC IS PROHIBITED.</p>	UNLESS OTHERWISE SPECIFIED:	NAME	DATE	<b>HSIO TECHNOLOGIES, LLC.</b> 13400 68th AVENUE NORTH MAPLE GROVE, MINNESOTA 55311 763-447-6260		
	DIMENSIONS ARE IN MILLIMETERS TOLERANCES: ANGULAR: $\pm 1^\circ$ XX $\pm 0.25$ X.XX $\pm 0.10$ X.XXX $\pm 0.050$	DRAWN	RS		11/13/18	
	INTERPRET GEOMETRIC TOLERANCING PER:	CHECKED	NSJ	11/13/18	TITLE:	
	MATERIAL SEE BOM FINISH	LEGEND:			<b>SCKT, 134GRY 11.0X11.5-0.65 EUTECTIC SOLDER BALLS</b>	
DO NOT SCALE DRAWING				DWG. NO.	REV	
				<b>106918-0014</b>	<b>A</b>	
				SCALE: 10:1	SIZE: C	SHEET 1 OF 2

SOCKET FOR DEVICES THAT ARE WITHIN THESE SPECIFICATIONS					
Lead Count	<b>N</b>	134	Package Size	<b>D</b>	11.00
Columns	<b>ND</b>	10		<b>E</b>	11.50
Rows	<b>NE</b>	17	Ball Spacing	<b>D1</b>	5.85
Pitch	<b>e</b>	0.65		<b>E1</b>	10.40
Ball Size	<b>b</b>	0.40±0.05	Encapsulant/ Top Size	<b>D2</b>	n/a
Total Thickness	<b>A</b>	n/a		<b>E2</b>	n/a
Ball Height	<b>A1</b>	0.25 Min	Pattern Style	IRREGULAR*	
Substrate Thickness	<b>A2</b>	n/a	Perimeter Rows	n/a	
Top Thickness	<b>A3</b>	n/a	Center Array	n/a	
Form Tolerances					
Edge	<b>aaa</b>	0.20	Bottom	<b>ddd</b>	0.15
Substrate	<b>bbb</b>	0.20	Position	<b>eee</b>	0.20
Top	<b>ccc</b>	0.20	Position	<b>fff</b>	0.08

All dimensions are in millimeters.  
\*See footprint specification for pattern details.



**Generic Representation with Full Grid Array**

PROPRIETARY AND CONFIDENTIAL					
THE INFORMATION CONTAINED IN THIS DRAWING IS THE SOLE PROPERTY OF HSIO TECHNOLOGIES, LLC. ANY REPRODUCTION IN PART OR AS A WHOLE WITHOUT THE WRITTEN PERMISSION OF HSIO TECHNOLOGIES, LLC IS PROHIBITED.					
UNLESS OTHERWISE SPECIFIED:	NAME	DATE	<b>HSIO TECHNOLOGIES, LLC.</b> 13400 68th AVENUE NORTH MAPLE GROVE, MINNESOTA 55311 763-447-6260		
DIMENSIONS ARE IN MILLIMETERS	DRAWN	RS			11/13/18
TOLERANCES:	CHECKED	NSJ			11/13/18
ANGULAR: ± 1° X.X ±0.25 X.XX ±0.10 X.XXX ±0.050			TITLE: <b>SCKT, 134GRY 11.0X11.5-0.65            EUTECTIC SOLDER BALLS</b>		
LEGEND:			DWG. NO.	REV	
△ NOTE CALLOUT ◻ REVISION CHANGE ○ ITEM NUMBER			<b>106918-0014</b>	<b>A</b>	
		SCALE: 10:1	SIZE: C	SHEET 2 OF 2	