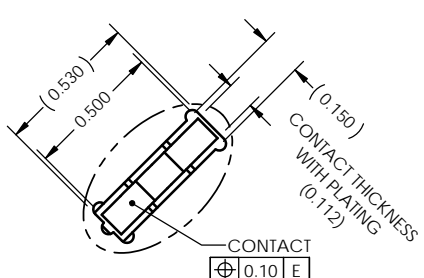
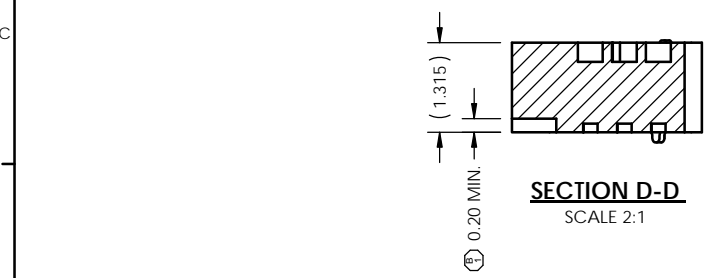
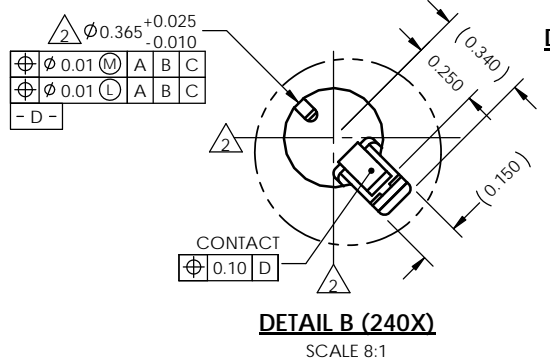
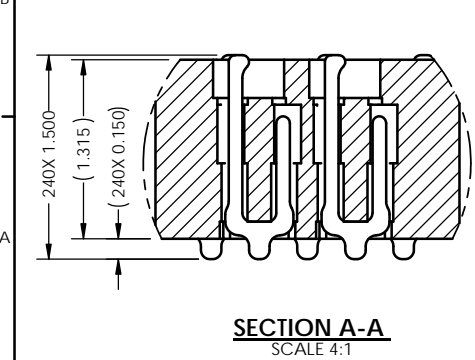


REV	ECO	BY	DESCRIPTION	APV	DATE
A	30522	AS	Initial Design	KW	08/12/10
B	30532	AS	Added Section D-D, 1) Added Dimension	KW	08/23/10
C	30649	MP	Added "MIN" to pocket depth	MP	12/09/10
D	31156	WB	Updated to current standard	KW	08/13/12

- Notes:
- Reference R&D Interconnect Solutions specification 103862-0004 for solder attachment.
  - Dimension locates center of contact/ slot.
  - Reference R&D Interconnect Solutions specification 103863-0001 for application notes.
  - Footprint part number is 104311-0224.
  - Datums B and C are determined by  $\phi 0.365$  features on corner slots.
  - Tooling marks permitted. Maximum 0.10 protrusion (shown).
  - E - Center of Ball Pattern.
  - Unless otherwise noted, all features located  $\oplus 0.10$  A B C
  - Press size 14.00X14.00.
  - Not all contacts shown to reduce file size.



Parts List			
Item	Qty	Part Number	Description
-	-	107022-0041	SCKT, 240G4014-0.50, CUSTOM
1	1	107612-0001	CS, 240G4014-0.50 W/O, SB
-	-	103684-0004	PRESS, DEVICE INSERT (SOLD SEPERATELY)
-	-	105900-0004	EXTRACTION TOOL, 4X53 (SOLD SEPERATELY)
-	-	107030-0031	STEN, FLEX, 240G40 14-0.50 (SOLD SEPERATELY)



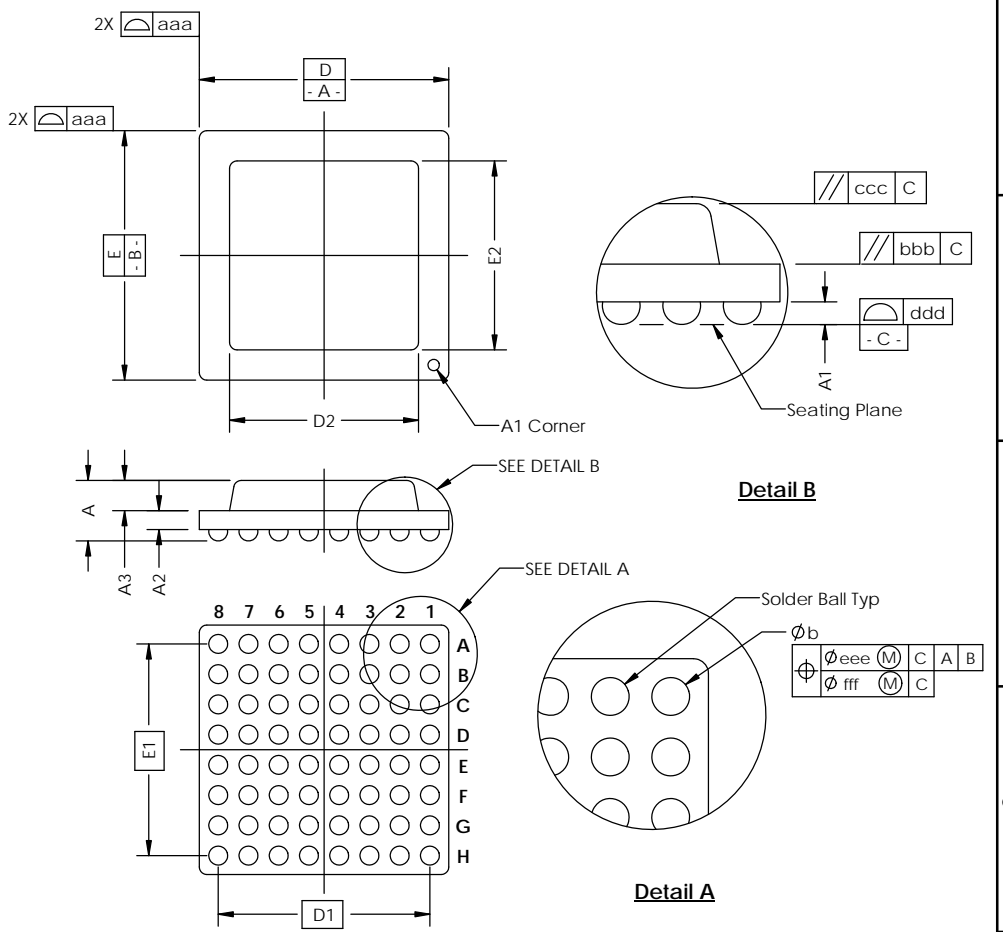
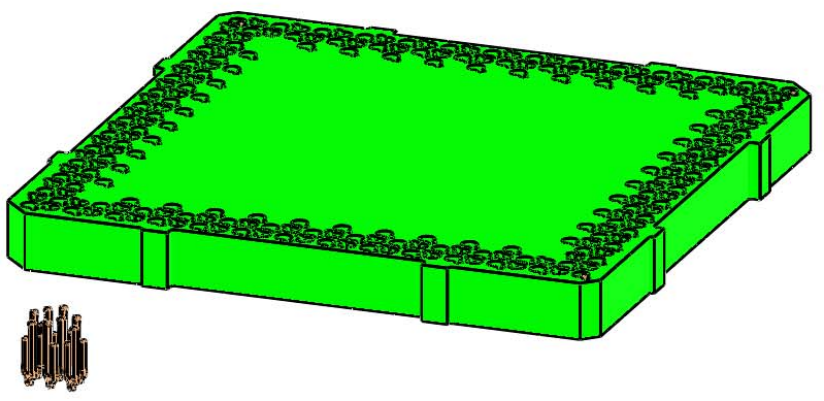
UNLESS OTHERWISE SPECIFIED DIMENSIONS ARE IN MILLIMETERS DIMS APPLY AFTER PLATING TOLERANCES UNLESS OTHERWISE NOTED:

ANGLES	DECIMALS	7115 NORTHLAND TERRACE SUITE 400 BROOKLYN PARK, MN 55428 (763) 509-0066	
±1°	XX ±0.25	<b>DRAWING APPROVALS</b> <b>SCKT, 240G4014-0.50, CUSTOM</b>	
	XXX ±0.10		
	XXXX ±0.050		

CAD GENERATED DRAWING DO NOT MANUALLY UPDATE			
NAME	DATE	<b>THIRD ANGLE PROJECTION</b> 	
A. Seiberlich	08/12/10	SCALE	NATURAL
K. Wilson	08/12/10	SHEET	SEE BOM
LEGEND:		DESIGNATION	107022-0041
(A) NOTE CALLOUT		REV	D
(B) REVISION CHANGE		1 of 2	
(X) ITEM NUMBER			

SOCKET FOR DEVICES THAT ARE WITHIN THESE SPECIFICATIONS					
Lead Count	<b>N</b>	240	Package Size	<b>D</b>	14.00
Columns	<b>ND</b>	27		<b>E</b>	14.00
Rows	<b>NE</b>	27	Ball Spacing	<b>D1</b>	13.000
Pitch	<b>e</b>	0.50		<b>E1</b>	13.000
Ball Size	<b>b</b>	0.30±0.05	Encapsulant/ Top Size	<b>D2</b>	n/a
Total Thickness	<b>A</b>	n/a		<b>E2</b>	n/a
Ball Height	<b>A1</b>	0.225 MIN	Pattern Style	Full OR Irregular *	
Substrate Thickness	<b>A2</b>	n/a	Perimeter Rows	n/a	
Top Thickness	<b>A3</b>		Center Array	n/a	
Form Tolerances					
Edge	<b>aaa</b>	0.10	Bottom	<b>ddd</b>	0.08
Substrate	<b>bbb</b>	0.10	Position	<b>eee</b>	0.10
top	<b>ccc</b>	0.10	Position	<b>fff</b>	0.05

All dimensions are in millimeters.  
\* See footprint for pattern details.



**Generic Representation with Full Grid Array**

<small>THE INFORMATION CONTAINED IN THIS DRAWING IS THE SOLE PROPERTY OF R&amp;D INTERCONNECT SOLUTIONS. ANY REPRODUCTION IN PART OR WHOLE WITHOUT THE WRITTEN PERMISSION OF R&amp;D INTERCONNECT SOLUTIONS IS PROHIBITED.</small>			
<small>UNLESS OTHERWISE SPECIFIED - DIMENSIONS ARE IN MILLIMETERS - DIMS APPLY AFTER PLATING TOLERANCES UNLESS OTHERWISE NOTED:</small>		7115 NORTHLAND TERRACE, SUITE 400 BROOKLYN PARK, MN 55428 (763) 509-0066	
<small>DECIMALS X.X ±0.25 X.XX ±0.10 X.XXX ±0.050</small>	<h2>SCKT, 240G4014-0.50, CUSTOM</h2>		
<b>LEGEND:</b> NOTE CALLOUT REVISION CHANGE ITEM NUMBER	<small>DATE FORN</small> <b>C</b>	<small>DRAWING NO</small> <b>107022-0041</b>	<small>REV</small> <b>D</b>
<small>SCALE</small> See Page 1	<small>MATERIAL</small>	<small>SHEET</small> 2 of 2	