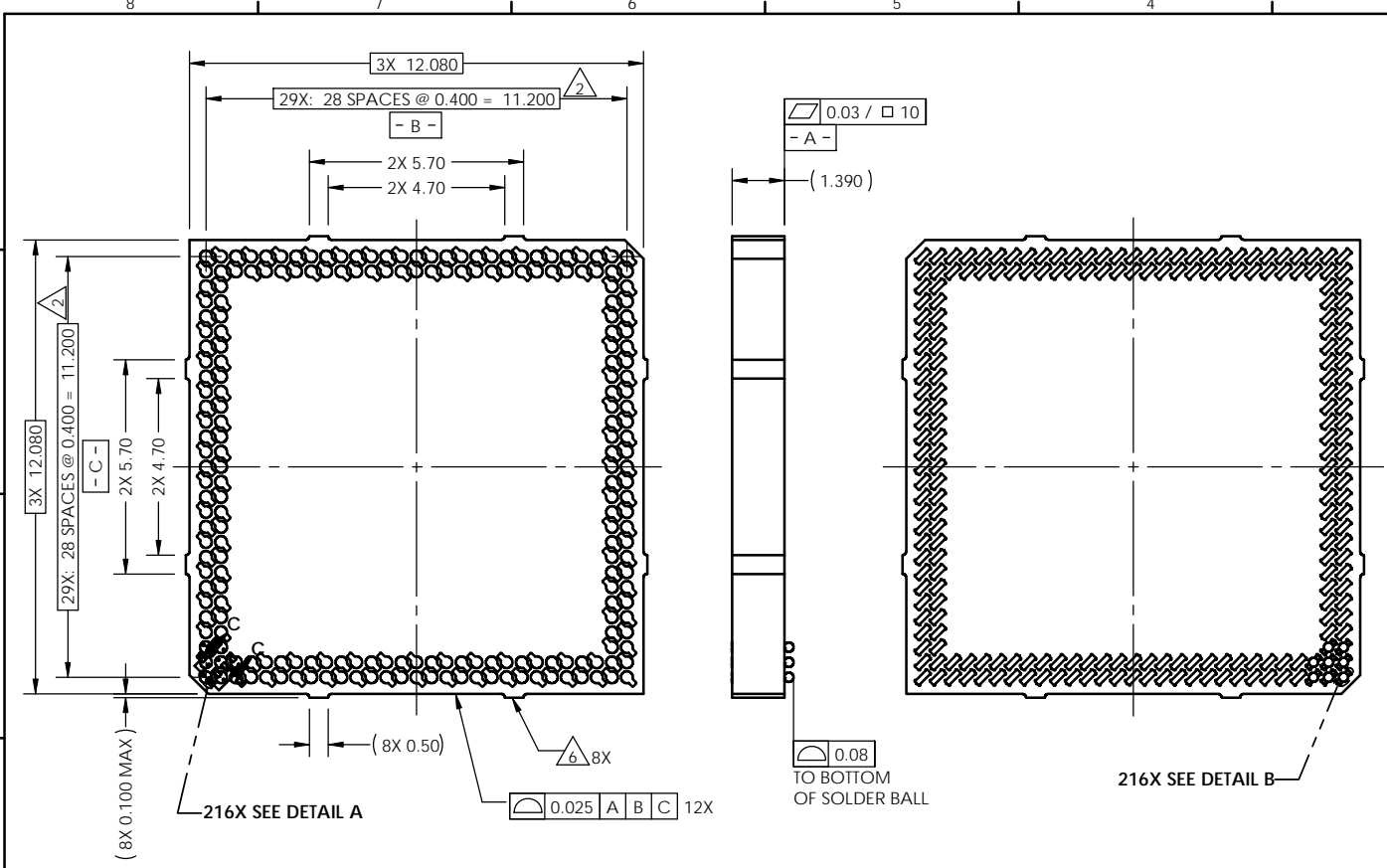
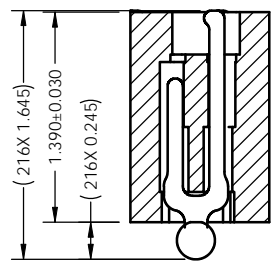
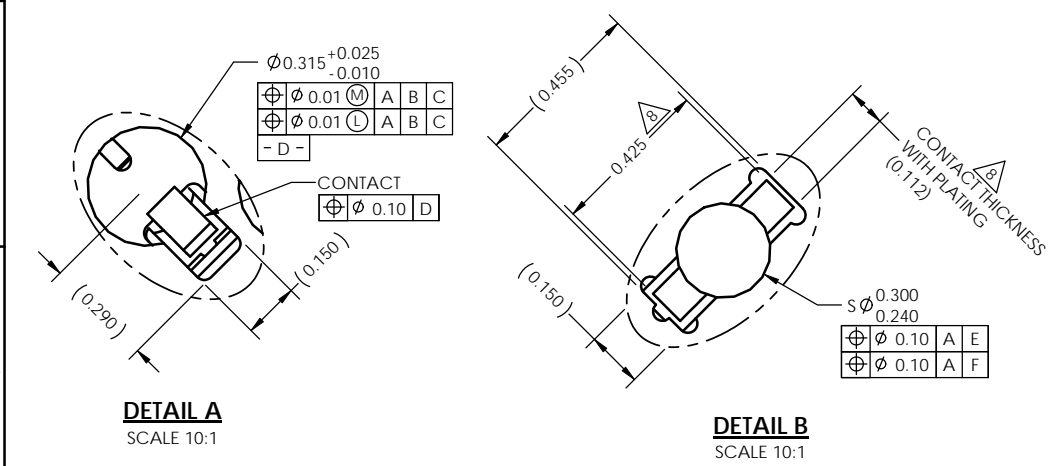


REV	ECO	BY	DESCRIPTION	APV	DATE
A	30517	SK	Initial Design	MP	08/10/10



Notes:

- Reference Cascade Microtech specification 103862-0004 for solder attachment.
- Dimension locates center of contact/slot.
- Reference Cascade Microtech specification 103863-0001 for application notes.
- Footprint part number is 104311-0234.
- Datums B and C are determined by $\phi 0.315$ features on corner slots.
- Tooling marks permitted. Maximum 0.10 protrusion (shown).
- E - Center of ball pattern.
- F - Center of contact.



SECTION C-C
SCALE 4:1

Parts List	
Part Number	Description
107140-0018	SCKT, 216G4012-0.40
103864-0002	PRESS, DEVICE INSERT, GRYP, 12X12 (SOLD SEPERATELY)
105900-0004	EXTRACTION TOOL, 4 X 53 (SOLD SEPERATELY)
104553-0186	STEN FLEX 216G4012-0.40 (SOLD SEPERATELY)

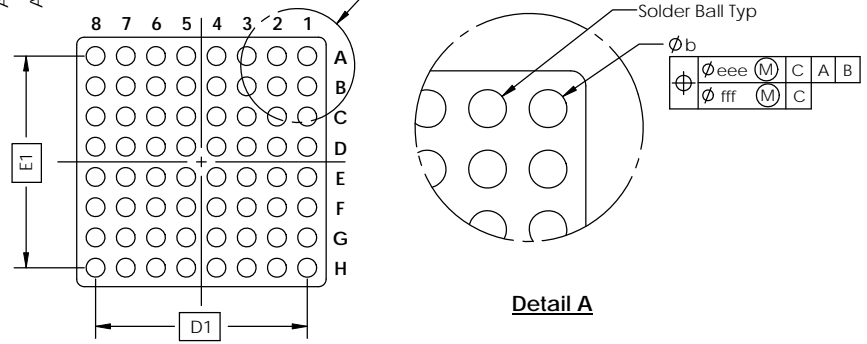
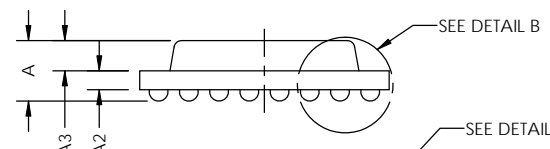
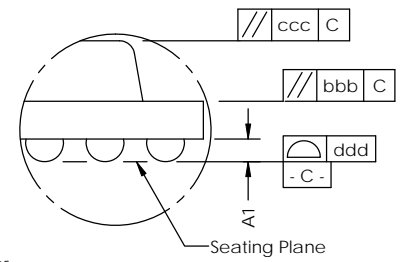
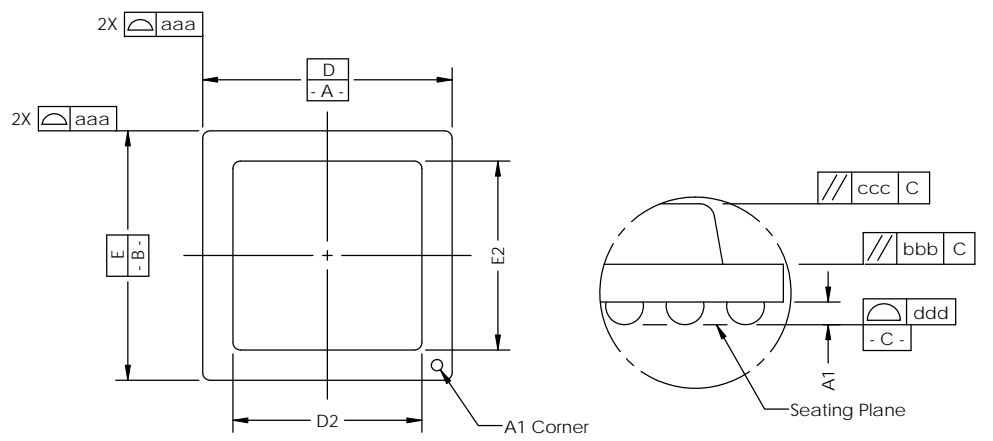
UNLESS OTHERWISE SPECIFIED DIMENSIONS ARE IN MILLIMETERS DIMS APPLY AFTER PLATING TOLERANCES UNLESS OTHERWISE NOTED

DECIMALS XX ±0.25 XXX ±0.10 XXXX ±0.050	ANGLES ±1°	LEGEND: (A) NOTE CALLOUT (B) REVISION CHANGE (X) ITEM NUMBER	THE INFORMATION CONTAINED IN THIS DRAWING IS THE SOLE PROPERTY OF CASCADE MICROTECH, INC. ANY REPRODUCTION IN PART OR WHOLE WITHOUT THE WRITTEN PERMISSION OF CASCADE MICROTECH, INC. IS PROHIBITED. CAD GENERATED DRAWING DO NOT MANUALLY UPDATE DRAWING APPROVALS NAME: S. Klanderud DATE: 08/10/10 NAME: M. Peery DATE: 08/10/10 THIRD ANGLE PROJECTION	7115 NORTHLAND TERRACE SUITE 400 BROOKLYN PARK, MN 55428 (763) 509-0066 SCKT, 216G4012-0.40 CUSTOMER: C SOLIDWORKS QUANTITY: 107140-0018 SHEET: A of 2
--	---------------	---	---	---

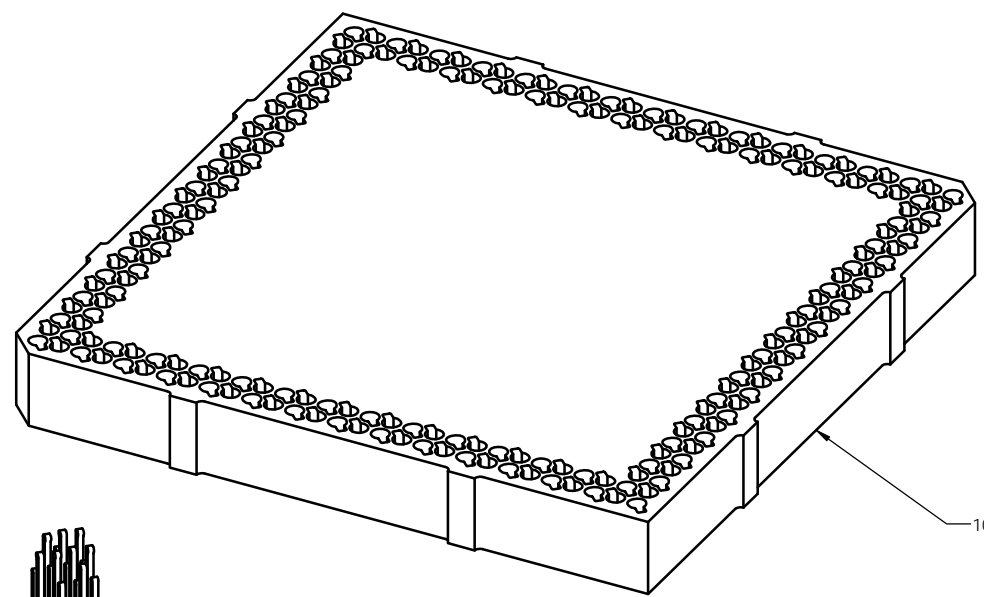
SEE BOM

SOCKET FOR DEVICES THAT ARE WITHIN THESE SPECIFICATIONS					
Lead Count	N	216	Package Size	D	12.00
Columns	ND	29		E	12.00
Rows	NE	29	Ball Spacing	D1	11.200
Pitch	e	0.40		E1	11.200
Ball Size	b	0.25±0.05	Encapsulant/ Top Size	D2	n/a
Total Thickness	A	n/a		E2	n/a
Ball Height	A1	0.175 MIN	Pattern Style	Perimeter*	
Substrate Thickness	A2	n/a	Perimeter Rows	2	
Top Thickness	A3		Center Array	N/A	
Form Tolerances					
Edge	aaa	0.10	Bottom	ddd	0.08
Substrate	bbb	0.10	Position	eee	0.15
top	ccc	0.10	Position	fff	0.05

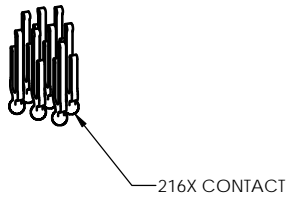
All dimensions are in millimeters.
* See footprint for pattern details.



Generic Representation with Full Grid Array



107143-0018



216X CONTACT

<small>THE INFORMATION CONTAINED IN THIS DRAWING IS THE SOLE PROPERTY OF CASCADE MICROTECH, INC. ANY REPRODUCTION IN PART OR WHOLE WITHOUT THE WRITTEN PERMISSION OF CASCADE MICROTECH, INC. IS PROHIBITED.</small>			
<small>UNLESS OTHERWISE SPECIFIED - DIMENSIONS ARE IN MILLIMETERS - DIMS APPLY AFTER PLATING - TOLERANCES UNLESS OTHERWISE NOTED:</small>	<small>DECIMALS</small> X.X ±0.25 X.XX ±0.10 X.XXX ±0.050		7115 NORTHLAND TERRACE SUITE 400 BROOKLYN PARK, MN 55428 (763) 509-0066
SCKT, 216G4012-0.40		107140-0018	A
LEGEND: NOTE CALLOUT REVISION CHANGE ITEM NUMBER	SCALE: See Page 1	DRAWN BY:	REV:
PAGE: 2 of 2			