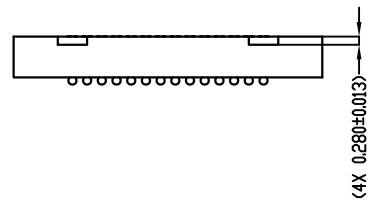
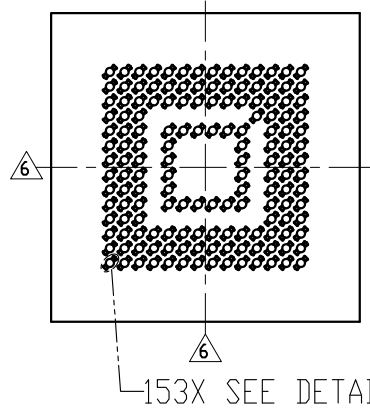
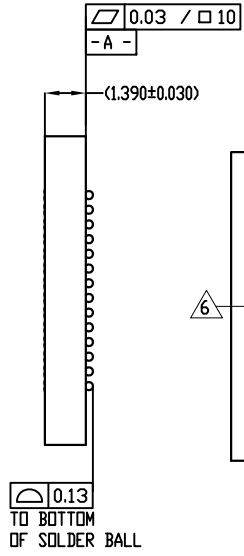
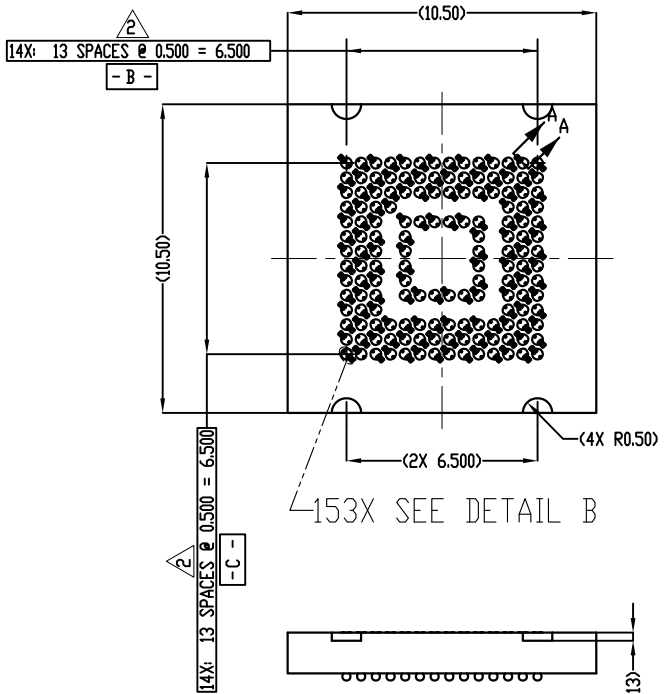
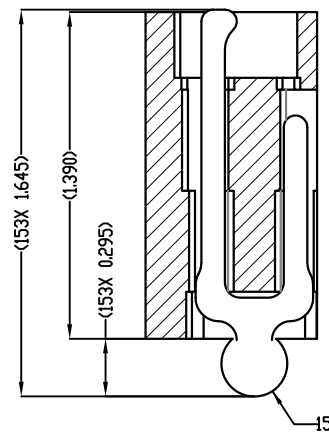


REV	ECO	BY	DESCRIPTION	APV	DATE
A	31302	AS	Initial Design	MP	06/06/13

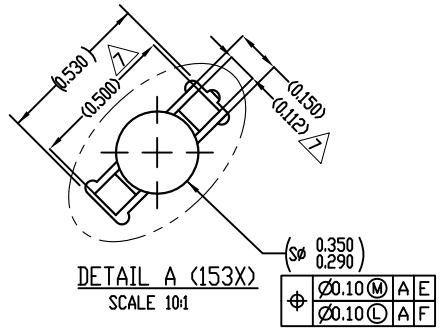
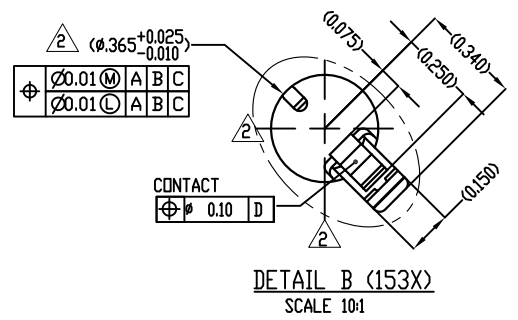


- Notes:
- Reference HSIO Technologies specification 700001-0001 for solder attachment.
 - Locates center of contact/ slot.
 - Reference HSIO Technologies specification 700001-0002 for application notes.
 - Footprint part number is 104311-0375.
 - Datums - B - and - C - are determined by $\phi 0.365$ features on corner slots.
- E - Center of ball pattern.
- F - Center of contact.

Parts List	
Part Number	Description
103864-0073	PRESS, DEVICE INSERT, GRYP 10.5X10.5 (SOLD SEPARATELY)
105900-0004	EXTRACTION TOOL, 4 X 53 (SOLD SEPARATELY)
104553-0292	STEN FLEX, 153G40 10.5-0.50 (SOLD SEPARATELY)



SECTION A-A
SCALE 8:1



HSIO technologies

PROPRIETARY AND CONFIDENTIAL

THE INFORMATION CONTAINED IN THIS DRAWING IS THE SOLE PROPERTY OF HSIO TECHNOLOGIES, LLC. ANY REPRODUCTION IN PART OR AS A WHOLE WITHOUT THE WRITTEN PERMISSION OF HSIO TECHNOLOGIES, LLC IS PROHIBITED.

UNLESS OTHERWISE SPECIFIED:

DIMENSIONS ARE IN MILLIMETERS

TOLERANCES:

ANGULAR $\pm 1^\circ$

2X ± 0.25

3XX ± 0.10

XXXX ± 0.050

INTERPRET GEOMETRIC TOLERANCING PER:

MATERIAL: SEE BOM

FINISH:

DO NOT SCALE DRAWING

NAME	DATE
AS	06/27/13
MP	06/27/13

LEGEND:

- NOTE CALLOUT
- REVISION CHANGE
- ITEM NUMBER

HSIO TECHNOLOGIES, LLC.

13300 67th AVENUE NORTH

MAPLE GROVE, MINNESOTA 55311

763-447-6260

TITLE:

SCKT, 153G40 10.5-0.50
W/SOLDER BALLS-SAC305

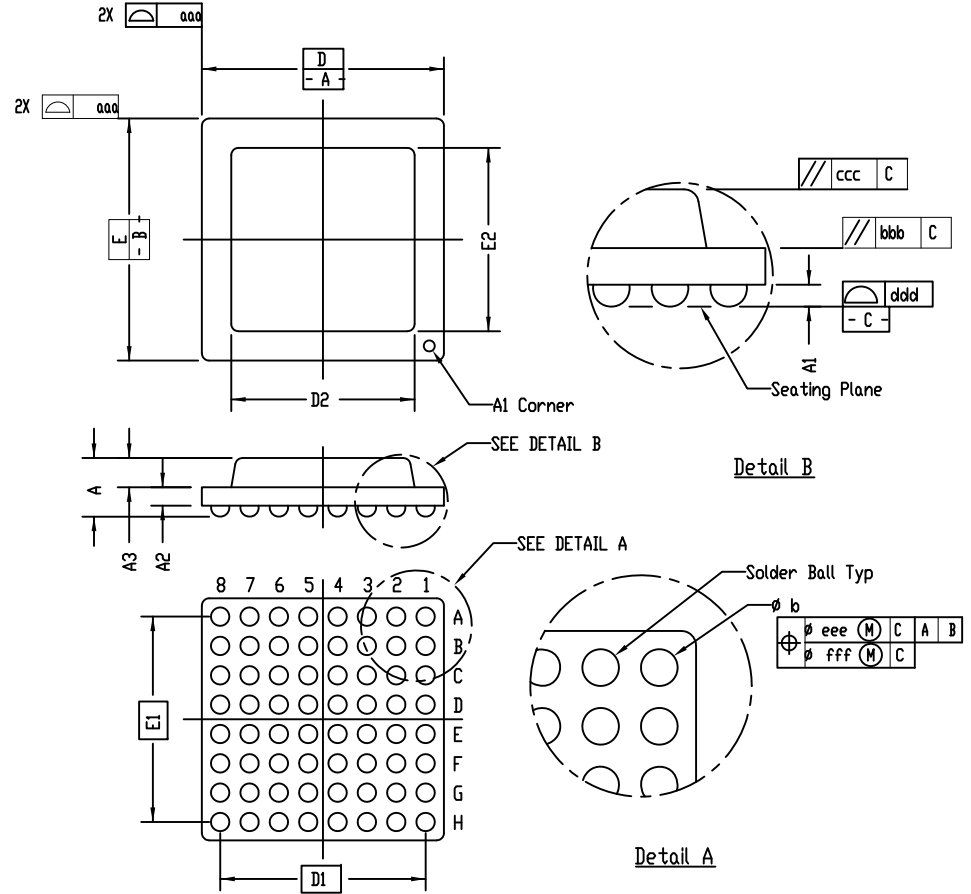
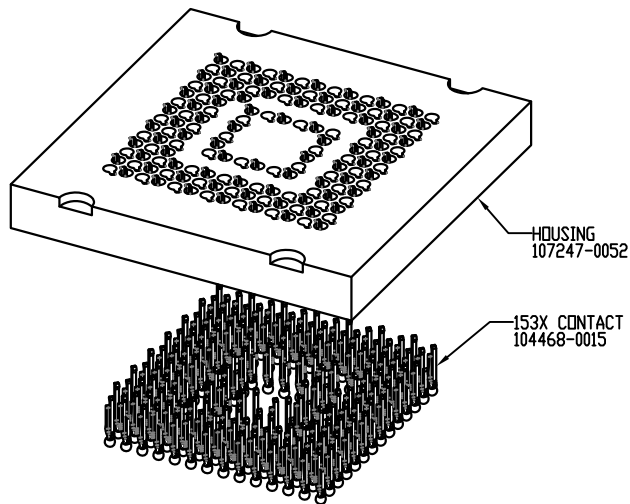
DWG. NO. 107250-0052

REV. A

SCALE: 10:1 | SIZE: C | SHEET 1 OF 2

SOCKET FOR DEVICES THAT ARE WITHIN THESE SPECIFICATIONS					
Lead Count	N	153	Package Size	D	10.50
Columns	ND	14	Ball Spacing	E	10.50
Rows	NE	14		D1	6.500
Pitch	e	0.50	Encapsulant/ Top Size	E1	6.500
Ball Size	b	0.30±0.05		D2	n/a
Total Thickness	A	n/a	E2	n/a	
Ball Height	A1	0.225 min.	Pattern Style	IRREGULAR*	
Substrate Thickness	A2	n/a	Perimeter Rows	n/a	
Top Thickness	A3		Center Array	n/a	
Form Tolerances					
Edge	aaa	0.10	Bottom	ddd	0.08
Substrate	bbb	0.10	Position	eee	0.15
top	ccc	0.10	Position	fff	0.05

All dimensions are in millimeters.
* See Footprint for pattern details.



Generic Representation with Full Grid Array

PROPRIETARY AND CONFIDENTIAL			
THE INFORMATION CONTAINED IN THIS DRAWING IS THE SOLE PROPERTY OF HSIQ TECHNOLOGIES, LLC. ANY REPRODUCTION IN PART OR AS A WHOLE WITHOUT THE WRITTEN PERMISSION OF HSIQ TECHNOLOGIES, LLC IS PROHIBITED.			
UNLESS OTHERWISE SPECIFIED:	NAME	DATE	HSIQ TECHNOLOGIES, LLC.
DIMENSIONS ARE IN MILLIMETERS	DRAWN	AS	13300 67th AVENUE NORTH
TOLERANCES:	CHECKED	MP	MAPLE GROVE, MINNESOTA 55311
ANGULAR: ±1°			763-447-6260
XX ±0.25			TITLE:
XXX ±0.10			SCKT, 153G40 10.5-0.50
XXXX ±0.050			W/SOLDER BALLS-SAC305
LEGEND:	DWG. NO.		REV
△ NOTE CALLOUT	107250-0052		A
○ REVISION CHANGE	SCALE: 5:1	SIZE: C	SHEET 2 OF 2
○ ITEM NUMBER			