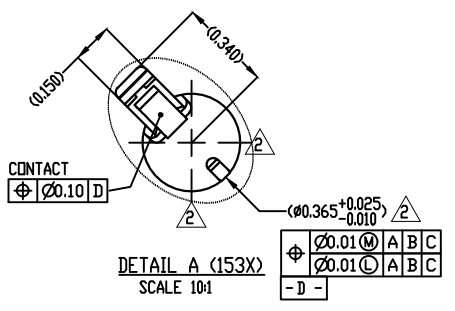
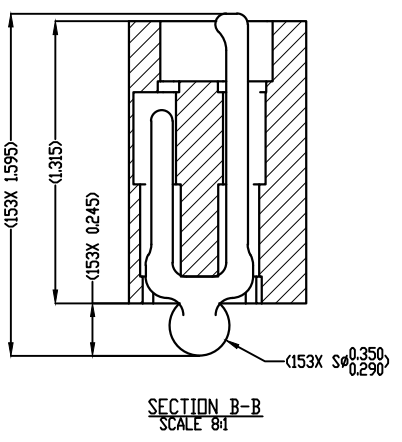
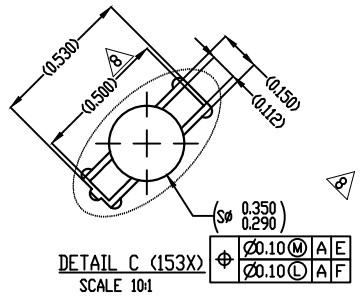
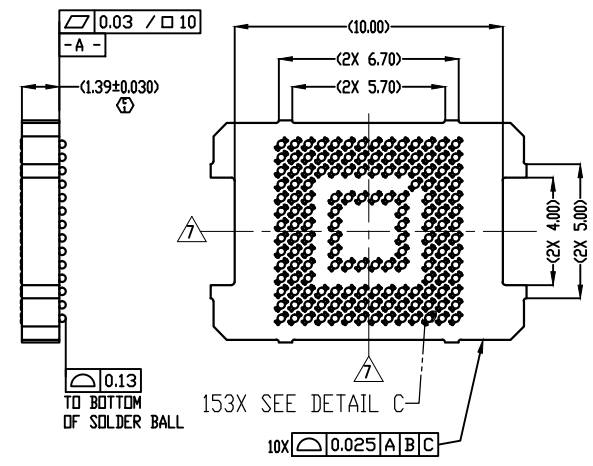
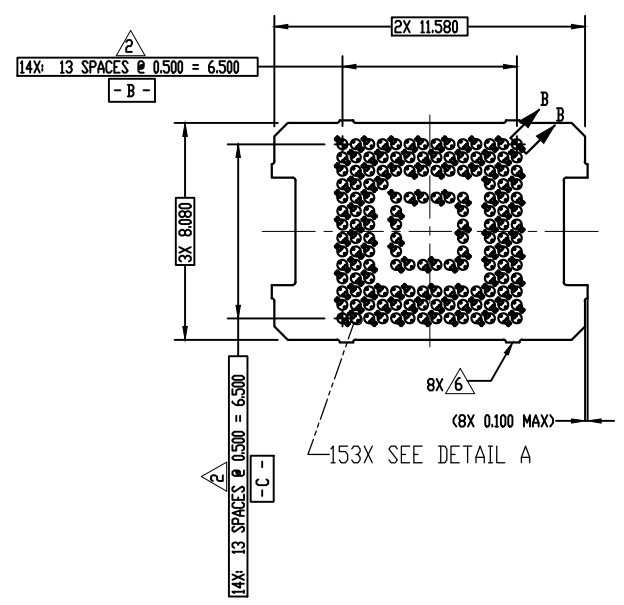


REV	ECO	BY	DESCRIPTION	APV	DATE
A	31277	AS	Initial Design	MP	04/08/13
B	31491	RS	1) Corrected Parts list 2) Updated Note 1 Updated BDM	NSJ	03/28/14
C	31630	RS	Was 1.315	NSJ	04/08/15

- Notes:
- ① 1. Reference HSIID Technologies specification 700001-0001 for solder attachment.
 - ② Dimension locates center of contact/slot.
 - 3. Reference HSIID Technologies specification 700001-0002 for application notes.
 - 4. Footprint part number is 104311-0310.
 - 5. Datums **-B-** and **-C-** are determined by $\phi 0.365$ features on corner slots.
 - ⑥ Tooling marks permitted. Maximum 0.10 protrusion (shown).
 - ⑦ **-E-** Center of ball pattern.
 - ⑧ **-F-** Center of contact.

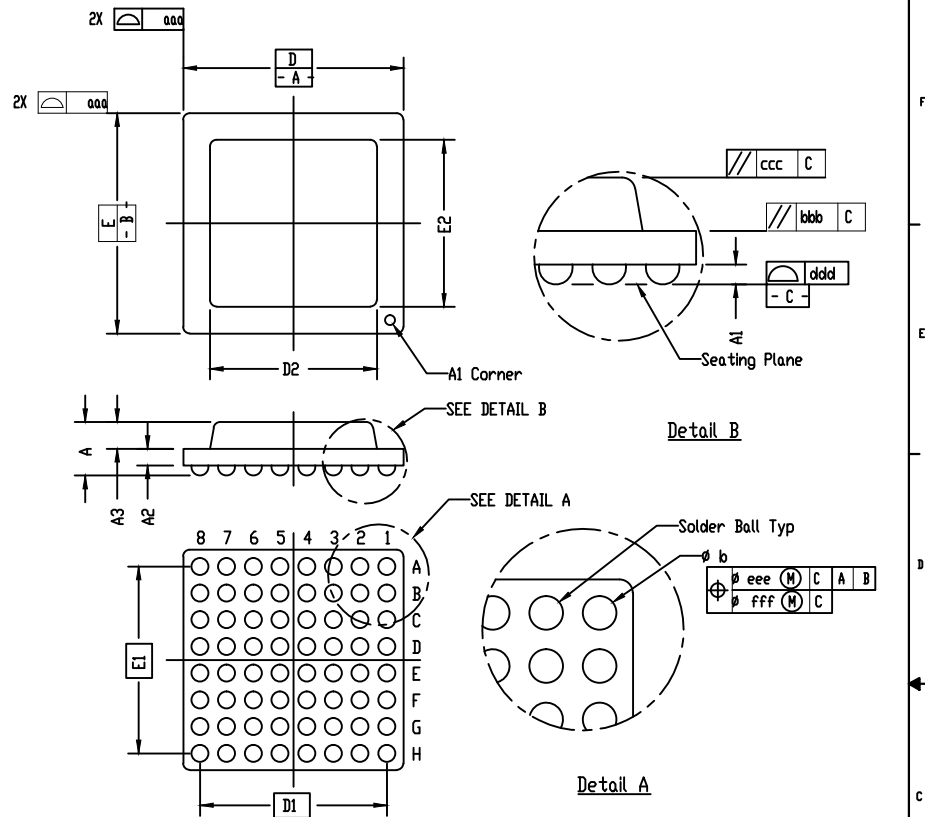
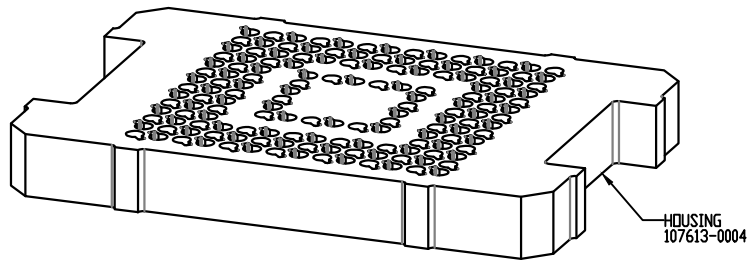
① Parts List	
Part Number	Description
107612-0004	CS, 153G40 11.5X8-0.50, W/D SOLDER BALLS
103864-0108	PRESS, DEVICE INSERT, GRYP 11.5X8.0 (SOLD SEPERATELY)
105900-0004	EXTRACTION TOOL, 4 X 53 (SOLD SEPERATELY)
104553-0236	STEN, FLEX, 153G40 11.5X8.0-0.50 (SOLD SEPERATELY)
108639-0001	FRAME, ALIGN, G40, 11.5X8.0 (SOLD SEPERATELY)



<p>UNLESS OTHERWISE SPECIFIED: DIMENSIONS ARE IN MILLIMETERS TOLERANCES: ANGULAR ± 1° XX ± 0.05 XXX ± 0.10 XXXX ± 0.150</p> <p>INTERNET GEOMETRIC TOLERANCING PER MATERIAL FINISH DO NOT SCALE DRAWING</p>	NAME	DATE	HSIID TECHNOLOGIES, LLC.	
	DRAWN	AS	04/08/13	13300 67th AVENUE NORTH
	CHECKED	MP	04/08/13	MAPLE GROVE, MINNESOTA 55311
	LEGEND:			763-447-6260
	△ NOTE CALLOUT		TITLE:	
	○ REVISION CHANGE		SCKT, 153G4011.5X8-0.50	
	○ ITEM NUMBER		W/SOLDER BALLS-SAC305	
			DWG. NO.	REV
			108348-0004	C
			SCALE: 10:1	SIZE: C
			SHEET 1 OF 2	

SOCKET FOR DEVICES THAT ARE WITHIN THESE SPECIFICATIONS					
Lead Count	N	153	Package Size	D	11.50
Columns	ND	14	Ball Spacing	E	8.00
Rows	NE	14		D1	6.500
Pitch	e	0.50	Encapsulant/ Top Size	E1	6.500
Ball Size	b	0.30±0.05		D2	n/a
Total Thickness	A	n/a	E2	n/a	
Ball Height	A1	0.225 min.	Pattern Style	IRREGULAR*	
Substrate Thickness	A2	n/a	Perimeter Rows	3	
Top Thickness	A3		Center Array	n/a	
Form Tolerances					
Edge	aaa	0.10	Bottom	ddd	0.08
Substrate	bbb	0.10	Position	eee	0.15
top	ccc	0.10	Position	fff	0.05

All dimensions are in millimeters.
* See footprint for pattern details.



Generic Representation with Full Grid Array

PROPRIETARY AND CONFIDENTIAL			
THE INFORMATION CONTAINED IN THIS DRAWING IS THE SOLE PROPERTY OF HSD TECHNOLOGIES, LLC. ANY REPRODUCTION IN PART OR AS A WHOLE WITHOUT THE WRITTEN PERMISSION OF HSD TECHNOLOGIES, LLC IS PROHIBITED.			
UNLESS OTHERWISE SPECIFIED:	NAME	DATE	HSD TECHNOLOGIES, LLC.
DIMENSIONS ARE IN MILLIMETERS	DRAWN	AS	04/08/13
TOLERANCES	CHECKED	MP	04/08/13
HOLE NO ± 1"			13300 67th AVENUE NORTH
XX ± 0.25			MAPLE GROVE, MINNESOTA 55311
XXX ± 0.50			763-447-6260
XXXX ± 0.60			
LEGEND:	TITLE:		
△ NOTE CALLOUT	SCKT, 153G4011.5X8-0.50		
○ REVISION CHANGE	W/SOLDER BALLS-SAC305		
○ ITEM NUMBER	DWG. NO. 108348-0004		
	SCALE: 101		REV C
	SIZE: C		SHEET 2 OF 2