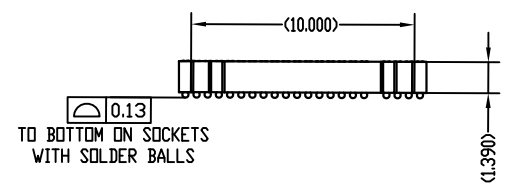
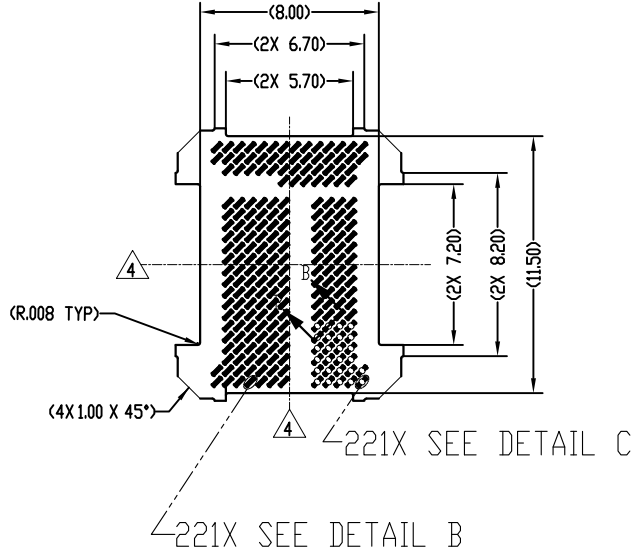
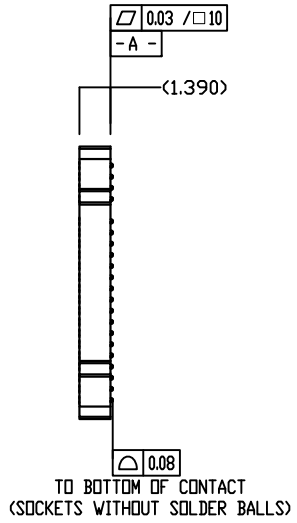
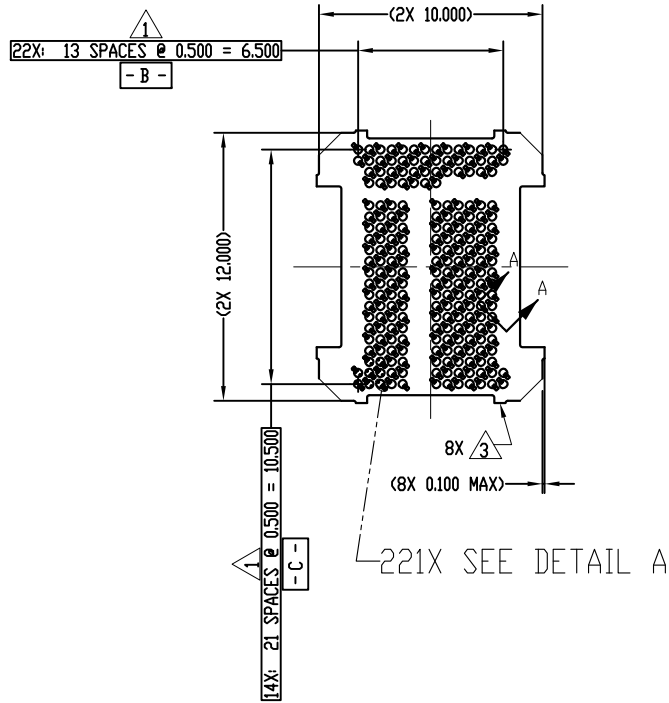


REV	ECO	BY	DESCRIPTION	APV	DATE
A	31502	RS	Initial Design	NSJ	05/02/14



Parts List	
Part Number	Description
109001-0001	SOCKET, 221G40 10.00X12.00-0.50 (WITH EUTECTIC SOLDER BALLS)
109001-0002	SOCKET, 221G40 10.00X12.00-0.50 (WITH SAC305 SOLDER BALLS)
109001-0003	SOCKET, 221G40 10.00X12.00-0.50 (WITHOUT SOLDER BALLS)
104553-0338	STENCIL, FLEX, 221G40 10.00X12.00-0.50 (SOLD SEPARATELY)
105900-0004	EXTRACTION TOOL, 4X53 (SOLD SEPARATELY)
108639-0014	FRAME, ALIGNMENT, G40, 10.00X12.00 (SOLD SEPARATELY)
103864-0054	PRESS, DEVICE INSERT, GRYP 10.00X11.00 (SOLD SEPARATELY)

UNLESS OTHERWISE SPECIFIED - DIMENSIONS ARE IN MILLIMETERS - DIM'S APPLY AFTER PLATING

THE INFORMATION CONTAINED IN THIS DRAWING IS THE SOLE PROPERTY OF HSIQ TECHNOLOGIES, LLC. ANY REPRODUCTION IN PART OR WHOLE WITHOUT THE WRITTEN PERMISSION OF HSIQ TECHNOLOGIES, LLC IS PROHIBITED.

CAD GENERATED DRAWING DO NOT MANUALLY UPDATE

HSIQ TECHNOLOGIES, LLC.
13300 67TH AVENUE NORTH
MAPLE GROVE, MN 55311. 763-447-6260

DRAWING APPROVALS

NAME	DATE	TITLE
R. Sewharack	05/02/14	SCKT, 221G40 10.00 X 12.00-0.50
N. St Jacques	05/02/14	

LEGEND:

- (X) NOTE CALLOUT
- (RT) REVISION CHANGE
- (X) ITEM NUMBER

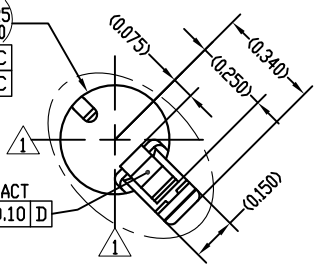
THIRD ANGLE PROJECTION

SCALE	CAD FORMAT	DRAWING NO.	REV.
C	AUTOCAD	109001-XXXX	A

SEE B.O.M

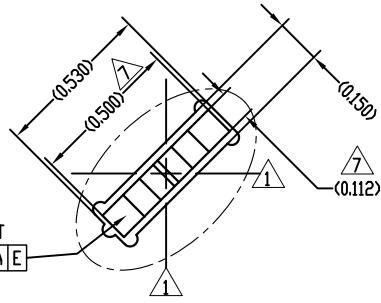
1 of 3

⊕	⌀0.01	M	A	B	C
	⌀0.01	C	A	B	C
-D-					

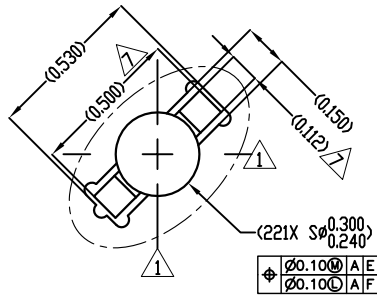


DETAIL A (221X)
SCALE 10:1

⊕	⌀0.10	A	E
	⌀0.10	A	E



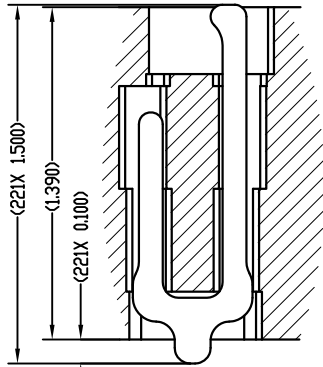
DETAIL B (221X)
SCALE 10:1



DETAIL C (221X)
SCALE 10:1

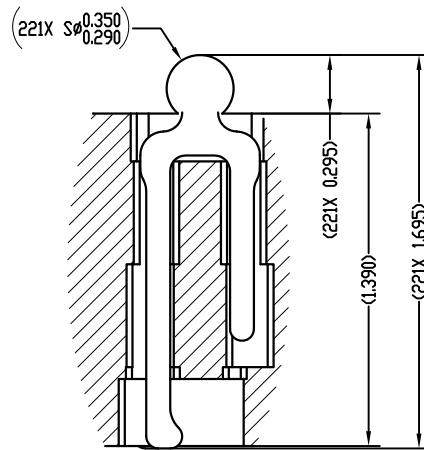
NOTES:

- 1 Dimension locates center of contact/slot.
- 2 Datum's **-B-** and **-C-** are determined by $\varnothing 0.365$ features on corner slots.
- 3 Tooling marks permitted. Maximum 0.10 protrusion shown.
- 4 **-E-** Center of contact pattern.
- 5 Reference HSIO Technologies specification 700001-0001 for solder attachment.
- 6 Reference HSIO Technologies specification 700001-0002 for application notes.
- 7 **-F-** Center of contact.



SECTION A-A
SCALE 10:1

VIEW WITHOUT SOLDER BALLS



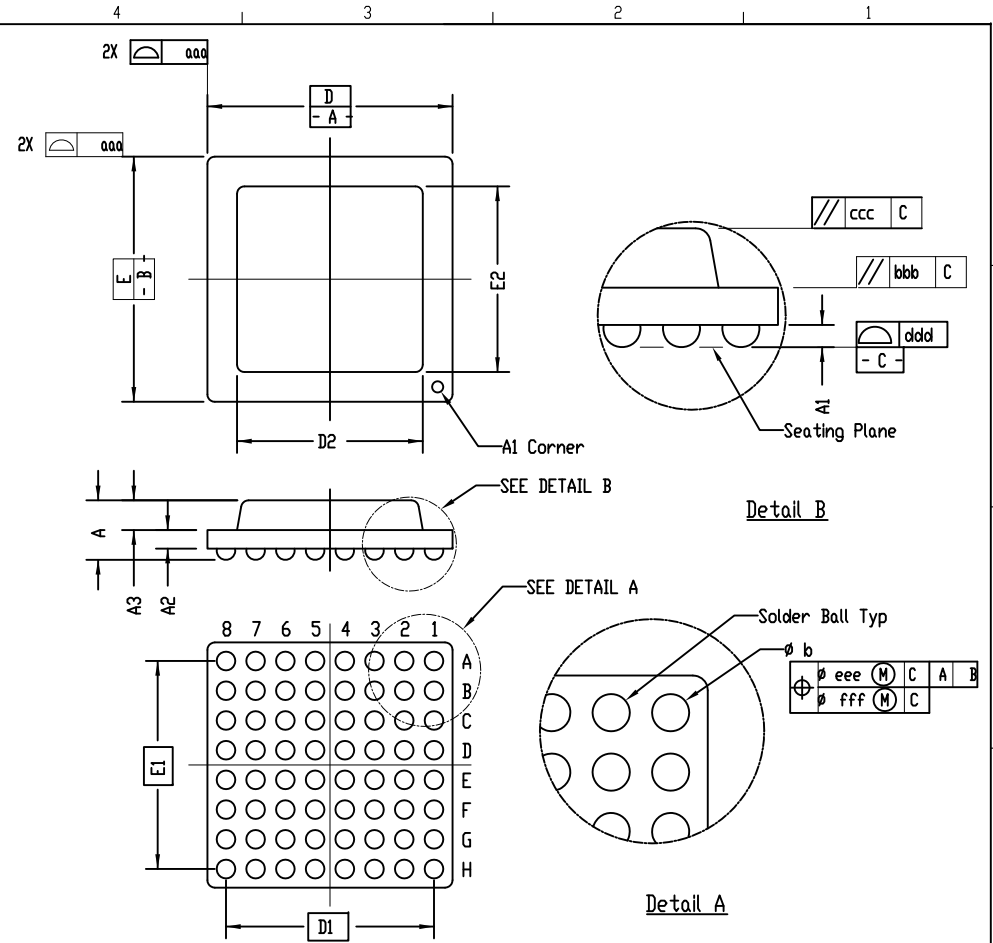
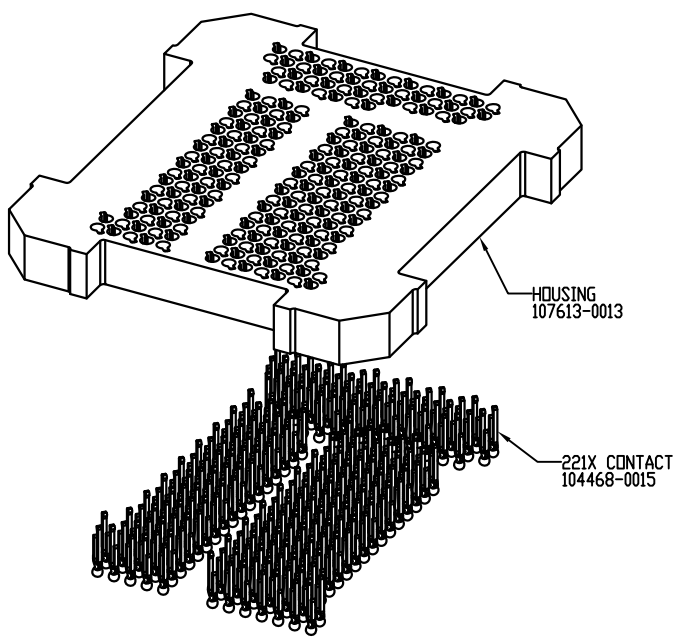
SECTION B-B
SCALE 8:1

VIEW WITH SOLDER BALLS
(EUTECTIC/SAC305)

THE INFORMATION CONTAINED IN THIS DRAWING IS THE SOLE PROPERTY OF HSIO TECHNOLOGIES, LLC. ANY REPRODUCTION IN PART OR WHOLE WITHOUT THE WRITTEN PERMISSION OF HSIO TECHNOLOGIES, LLC IS PROHIBITED.			
UNLESS OTHERWISE SPECIFIED - DIMENSIONS ARE IN MILLIMETERS - DIM'S APPLY AFTER PLATING TOLERANCES UNLESS OTHERWISE NOTED:		HSIO TECHNOLOGIES, LLC. 13300 67TH AVENUE NORTH MAPLE GROVE, MN 55311. 763-447-6260	
ANGLES ±1°	DECIMALS X.XX ±0.25 X.XXX ±0.10 X.XXX ±0.050	TITLE SCKT, 221G40 10.00 X 12.00-0.50	REV. A
LEGEND: 1 NOTE CALLOUT ⊕ REVISION CHANGE 1 ITEM NUMBER	SIZE C	CAD FORMAT AUTOCAD	DRAWING NO. 109001-XXXX
	SCALE See Pg 1	MATERIAL	SHEET 2 of 3

SOCKET FOR DEVICES THAT ARE WITHIN THESE SPECIFICATIONS					
Lead Count	N	221	Package Size	D	10.00
Columns	ND	14		E	12.00
Rows	NE	22	Ball Spacing	D1	6.500
Pitch	e	0.50		E1	10.500
Ball Size	b	0.30±0.05	Encapsulant/ Top Size	D2	n/a
Total Thickness	A	n/a		E2	n/a
Ball Height	A1	0.225 min.	Pattern Style	IRREGULAR*	
Substrate Thickness	A2	n/a	Perimeter Rows	n/a	
Top Thickness	A3		Center Array	n/a	
Form Tolerances					
Edge	aaa	0.10	Bottom	ddd	0.08
Substrate	bbb	0.10	Position	eee	0.15
top	ccc	0.10	Position	fff	0.05

All dimensions are in millimeters.



Generic Representation with Full Grid Array

<small>THE INFORMATION CONTAINED IN THIS DRAWING IS THE SOLE PROPERTY OF HSIQ TECHNOLOGIES, LLC. ANY REPRODUCTION IN PART OR WHOLE WITHOUT THE WRITTEN PERMISSION OF HSIQ TECHNOLOGIES, LLC. IS PROHIBITED.</small>																			
<small>UNLESS OTHERWISE SPECIFIED - DIMENSIONS ARE IN MILLIMETERS - DIM'S APPLY AFTER PLATING TOLERANCES UNLESS OTHERWISE NOTED:</small>		HSIQ TECHNOLOGIES, LLC. 13300 67TH AVENUE NORTH MAPLE GROVE, MN 55311. 763-447-6260																	
<small>ANGLES</small> <table border="0"> <tr> <td>±1°</td> <td>DECIMALS</td> <td></td> <td></td> </tr> <tr> <td>X.XX</td> <td>±0.25</td> <td></td> <td></td> </tr> <tr> <td>X.XXX</td> <td>±0.10</td> <td></td> <td></td> </tr> <tr> <td>X.XXX</td> <td>±0.050</td> <td></td> <td></td> </tr> </table>		±1°	DECIMALS			X.XX	±0.25			X.XXX	±0.10			X.XXX	±0.050			TITLE SCKT, 221G40 10.00 X 12.00 -0.50	
±1°	DECIMALS																		
X.XX	±0.25																		
X.XXX	±0.10																		
X.XXX	±0.050																		
<small>LEGEND:</small> 1 NOTE CALLOUT A REVISION CHANGE 1 ITEM NUMBER	<small>SIZE</small> C AUTOCAD	<small>DRAWING NO.</small> 109001-XXXX	<small>REV.</small> A																
<small>SCALE</small> See Pg 1		<small>SHEET</small> 3of3																	