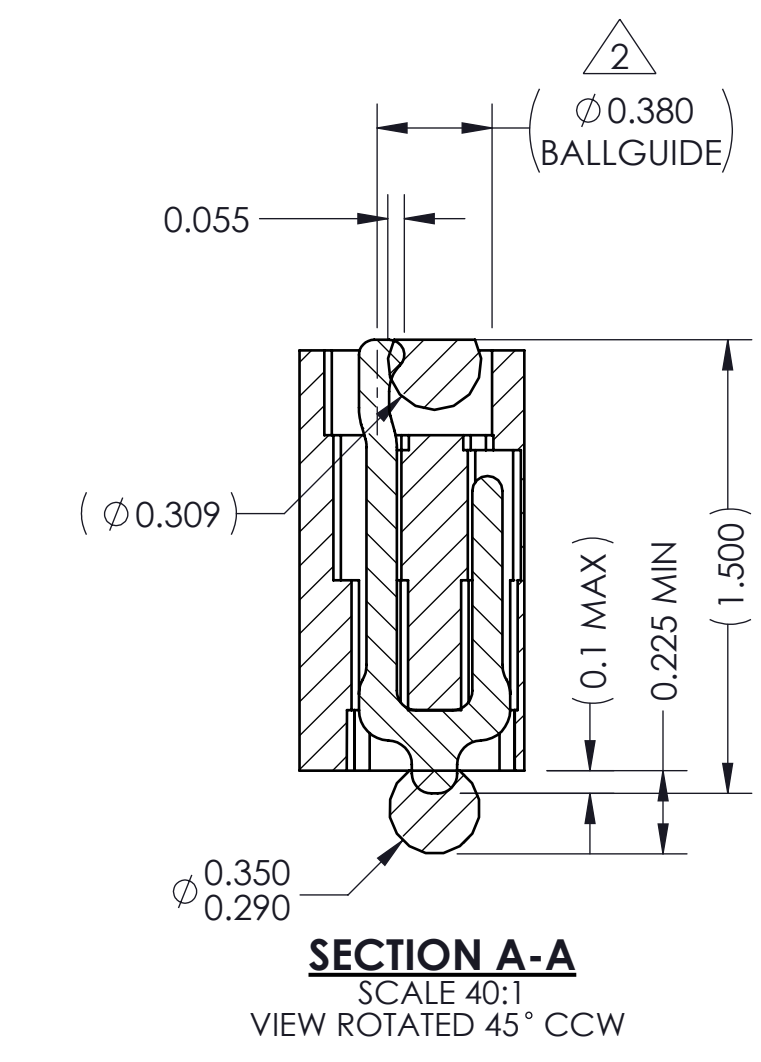
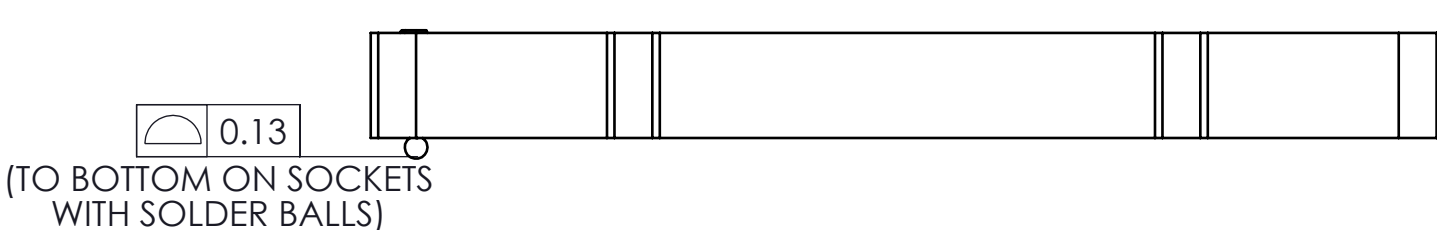
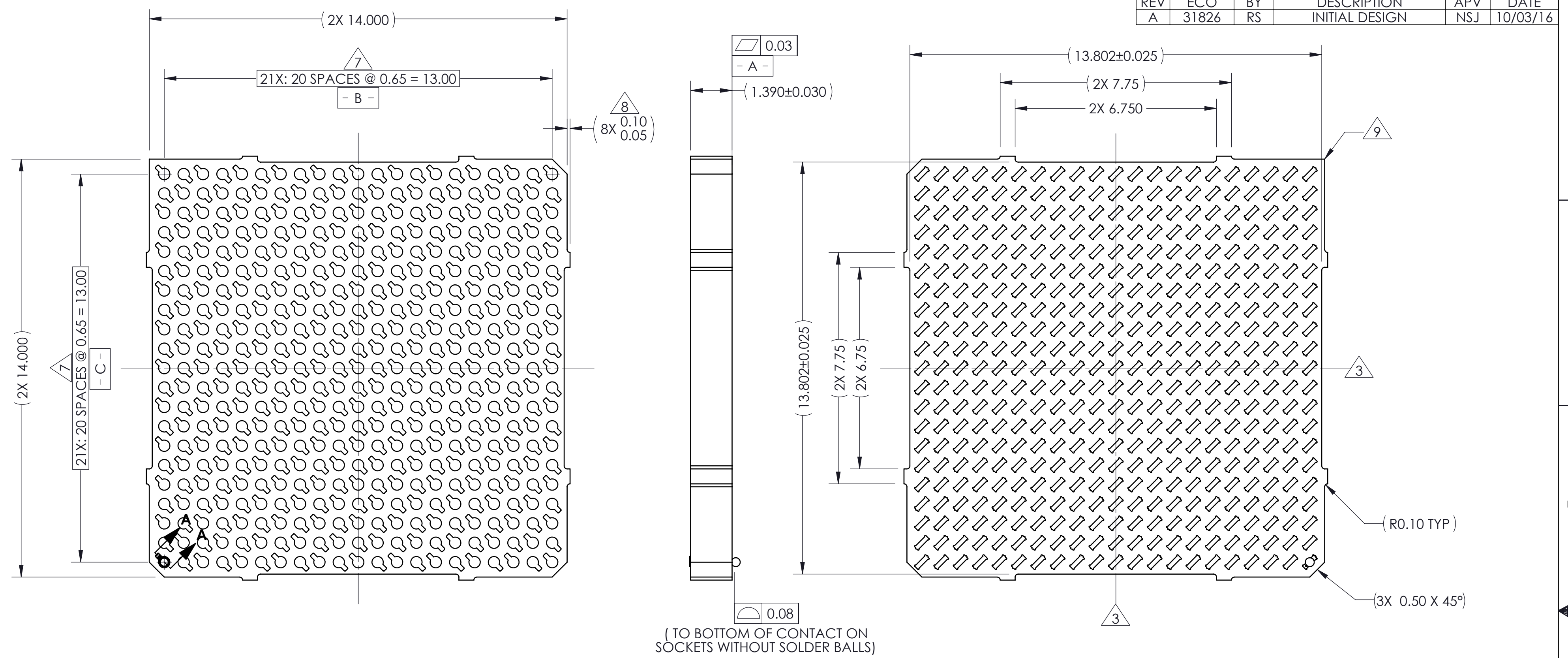


REV	ECO	BY	DESCRIPTION	APV	DATE
A	31826	RS	INITIAL DESIGN	NSJ	10/03/16



PART NUMBER	DESCRIPTION
109084-0001	SCKT, 441G40 14.0-0.65, LIF (EUTECTIC SOLDER BALL)
109084-0002	SCKT, 441G40 14.0-0.65, LIF (SAC305 SOLDER BALL)
109084-0003	SCKT, 441G40 14.0-0.65, LIF (WITHOUT SOLDER BALL)
103864-0004	PRESS DEVICE INSERT, 14.0 X 14.0 (SOLD SEPARATELY)
104553-0446	STENCIL, FLEX, 441G40 14.0-0.65 (SOLD SEPARATELY)
105900-0004	EXTRACTION TOOL, 4 X 53 (SOLD SEPARATELY)
108639-0002	ALIGNMENT FRAME, GRY 14.0 X 14.0 (SOLD SEPARATELY)

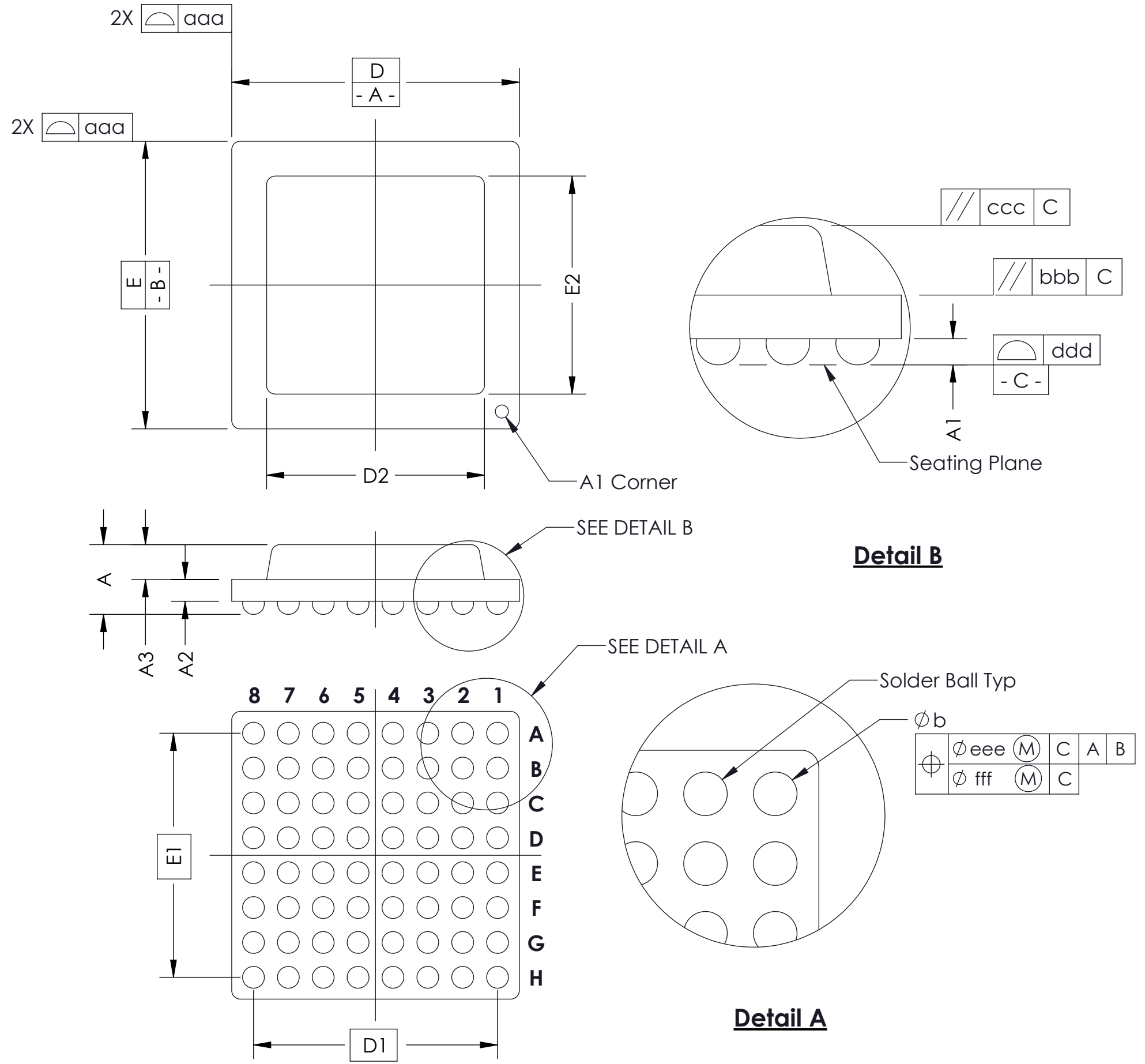
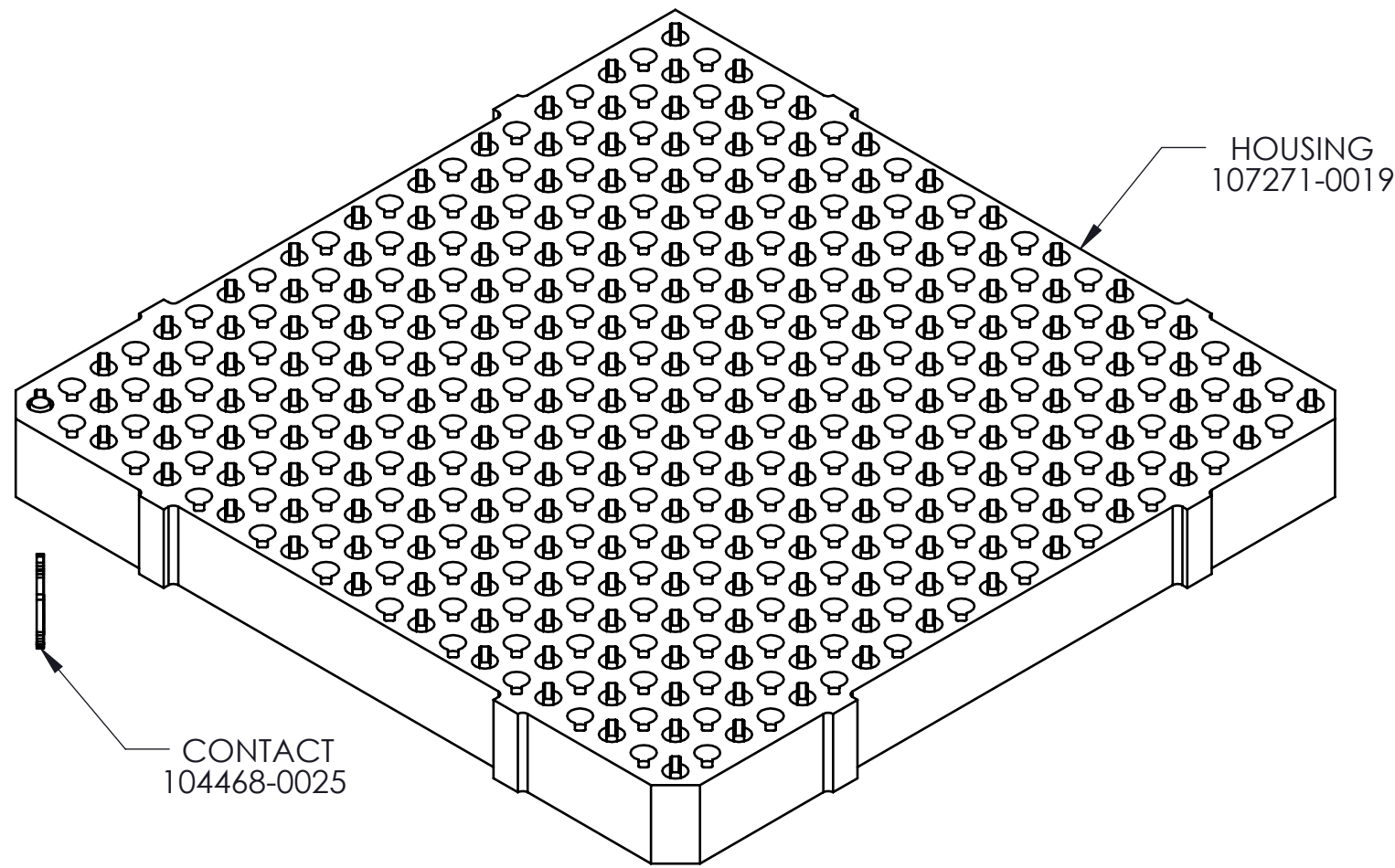
NOTES:

- UNLESS OTHERWISE NOTED, ALL FEATURES LOCATED  $\oplus 0.10$  A B C
- DATUM'S - B - AND - C - ARE DETERMINED BY  $\phi 0.380$  FEATURES ON CORNER SLOTS.
- CENTER OF CONTACT PATTERN.
- REFERENCE HSIO TECHNOLOGIES SPECIFICATION 700001-0001 FOR SOLDER ATTACHMENT.
- REFERENCE HSIO TECHNOLOGIES SPECIFICATION 700001-0002 FOR APPLICATION NOTES.
- DIMENSION LOCATES CENTER OF CONTACT/SLOT.
- TOOLING MARKS PERMITTED. MAXIMUM 0.10 PROTRUSION SHOWN.
- PIN "A1" INDICATOR.

<p><b>HSIO technologies</b> PROPRIETARY AND CONFIDENTIAL</p> <p>THE INFORMATION CONTAINED IN THIS DRAWING IS THE SOLE PROPERTY OF HSIO TECHNOLOGIES, LLC. ANY REPRODUCTION IN PART OR AS A WHOLE WITHOUT THE WRITTEN PERMISSION OF HSIO TECHNOLOGIES, LLC IS PROHIBITED.</p>	UNLESS OTHERWISE SPECIFIED:	NAME	DATE	<b>HSIO TECHNOLOGIES, LLC.</b> 13400 68th AVENUE NORTH MAPLE GROVE, MINNESOTA 55311 763-447-6260	
	DIMENSIONS ARE IN MILLIMETERS	DRAWN	RS		10/03/16
	TOLERANCES:	CHECKED	NSJ	10/03/16	TITLE: SCKT, 441G40 14.0-0.65, LIF
	ANGULAR: $\pm 1^\circ$ X.X $\pm 0.25$ X.XX $\pm 0.10$ X.XXX $\pm 0.050$	LEGEND:			
INTERPRET GEOMETRIC TOLERANCING PER:	SEE BOM			DWG. NO.	
MATERIAL				109084-XXXX	
FINISH				REV	
DO NOT SCALE DRAWING				A	
				SCALE: 10:1	
				SIZE: C	
				SHEET 1 OF 2	

SOCKET FOR DEVICES THAT ARE WITHIN THESE SPECIFICATIONS					
Lead Count	<b>N</b>	441	Package Size	<b>D</b>	14.00
Columns	<b>ND</b>	21		<b>E</b>	14.00
Rows	<b>NE</b>	21	Ball Spacing	<b>D1</b>	13.000
Pitch	<b>e</b>	0.650		<b>E1</b>	13.000
Ball Size	<b>b</b>	0.30-0.37	Encapsulant/ Top Size	<b>D2</b>	N/A
Total Thickness	<b>A</b>	N/A		<b>E2</b>	N/A
Ball Height	<b>A1</b>	0.225 MIN	Pattern Style	FULL	
Substrate Thickness	<b>A2</b>	N/A	Perimeter Rows	N/A	
Top Thickness	<b>A3</b>		Center Array	N/A	
Form Tolerances					
Edge	<b>aaa</b>	N/A	Bottom	<b>ddd</b>	N/A
Substrate	<b>bbb</b>	N/A	Position	<b>eee</b>	N/A
top	<b>ccc</b>	N/A	Position	<b>fff</b>	N/A

ALL DIMENSIONS IN MILLIMETERS.



**Generic Representation with Full Grid Array**

<p><b>HSIO technologies</b> PROPRIETARY AND CONFIDENTIAL</p> <p>THE INFORMATION CONTAINED IN THIS DRAWING IS THE SOLE PROPERTY OF HSIO TECHNOLOGIES, LLC. ANY REPRODUCTION IN PART OR AS A WHOLE WITHOUT THE WRITTEN PERMISSION OF HSIO TECHNOLOGIES, LLC IS PROHIBITED.</p>	UNLESS OTHERWISE SPECIFIED:	NAME	DATE	<b>HSIO TECHNOLOGIES, LLC.</b> <b>13400 68th AVENUE NORTH</b> <b>MAPLE GROVE, MINNESOTA 55311</b> <b>763-447-6260</b>	
	DIMENSIONS ARE IN MILLIMETERS	DRAWN	RS		10/03/16
	TOLERANCES:	CHECKED	NSJ	10/03/16	TITLE: SCKT, 441G40 14.0-0.65, LIF
	ANGULAR: ± 1°	LEGEND:			
X.X ±0.25	△ NOTE CALLOUT	DWG. NO.		REV	
X.XX ±0.10	□ REVISION CHANGE	109084-XXXX		A	
X.XXX ±0.050	○ ITEM NUMBER	SCALE: 10:1		SIZE: C	
INTERPRET GEOMETRIC TOLERANCING PER:	DO NOT SCALE DRAWING		SHEET 2 OF 2		
MATERIAL	SEE BOM				
FINISH					