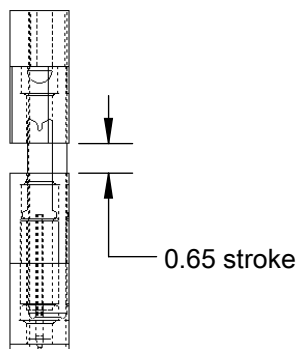
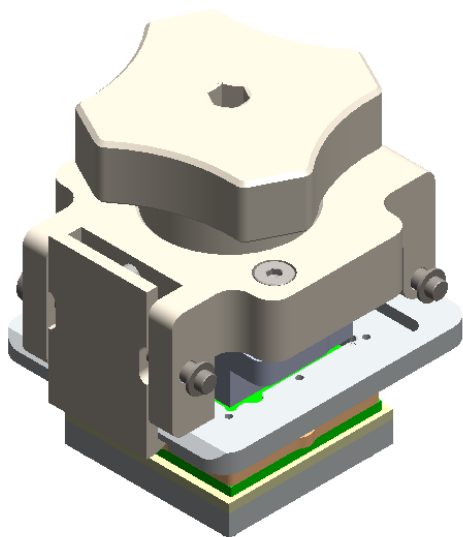


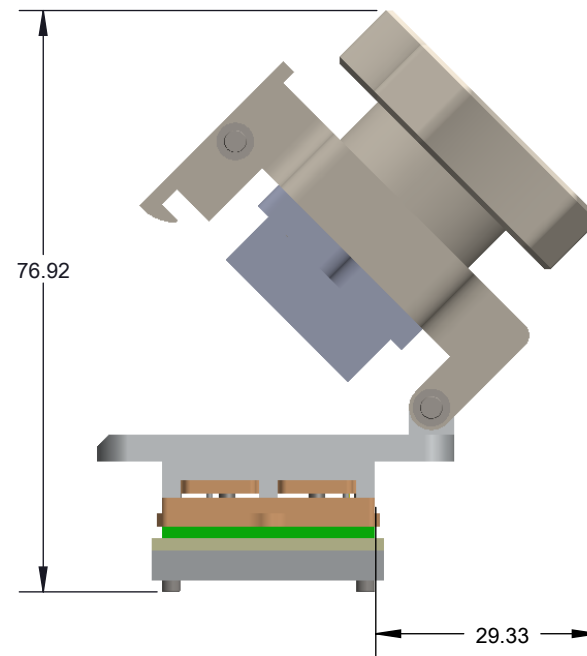
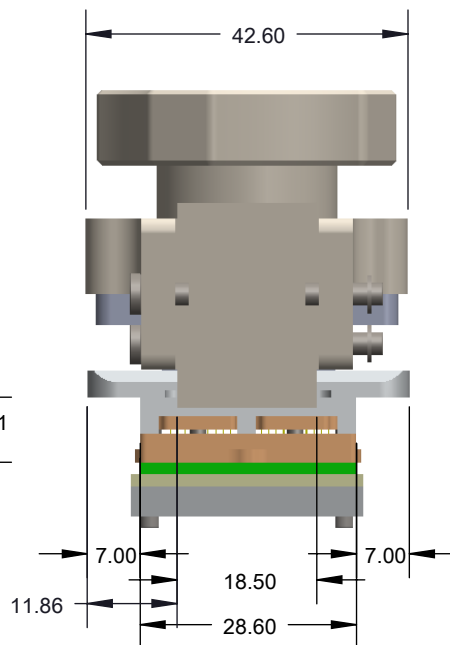
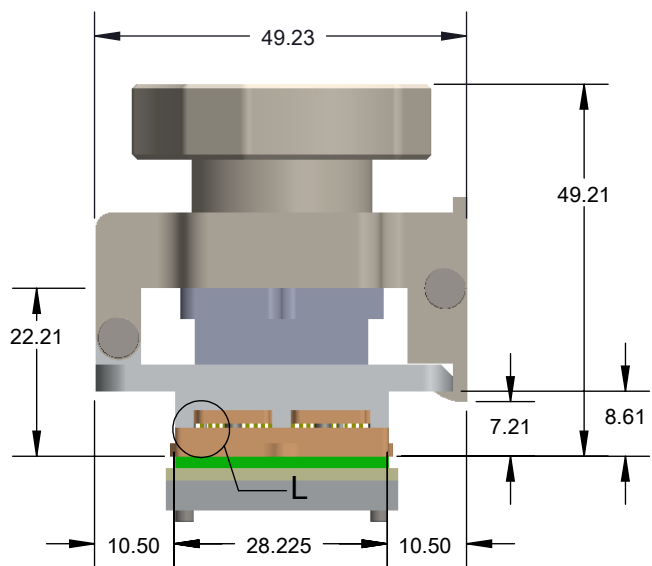
CBT-BGA DIRECT MOUNT, SOLDERLESS SOCKET FOR BURN-IN AND TEST APPLICATIONS

FEATURES:

- Wide temperature range (-55C to +180C)
- High current capability (up to 8A)
- Excellent signal integrity at high frequencies
- Low and stable contact resistance for reliable production yield
- Highly compliant to accommodate wide co-planarity variations
- Automated probe manufacturing enables low cost and short lead time




DETAIL L
SCALE 6 : 1



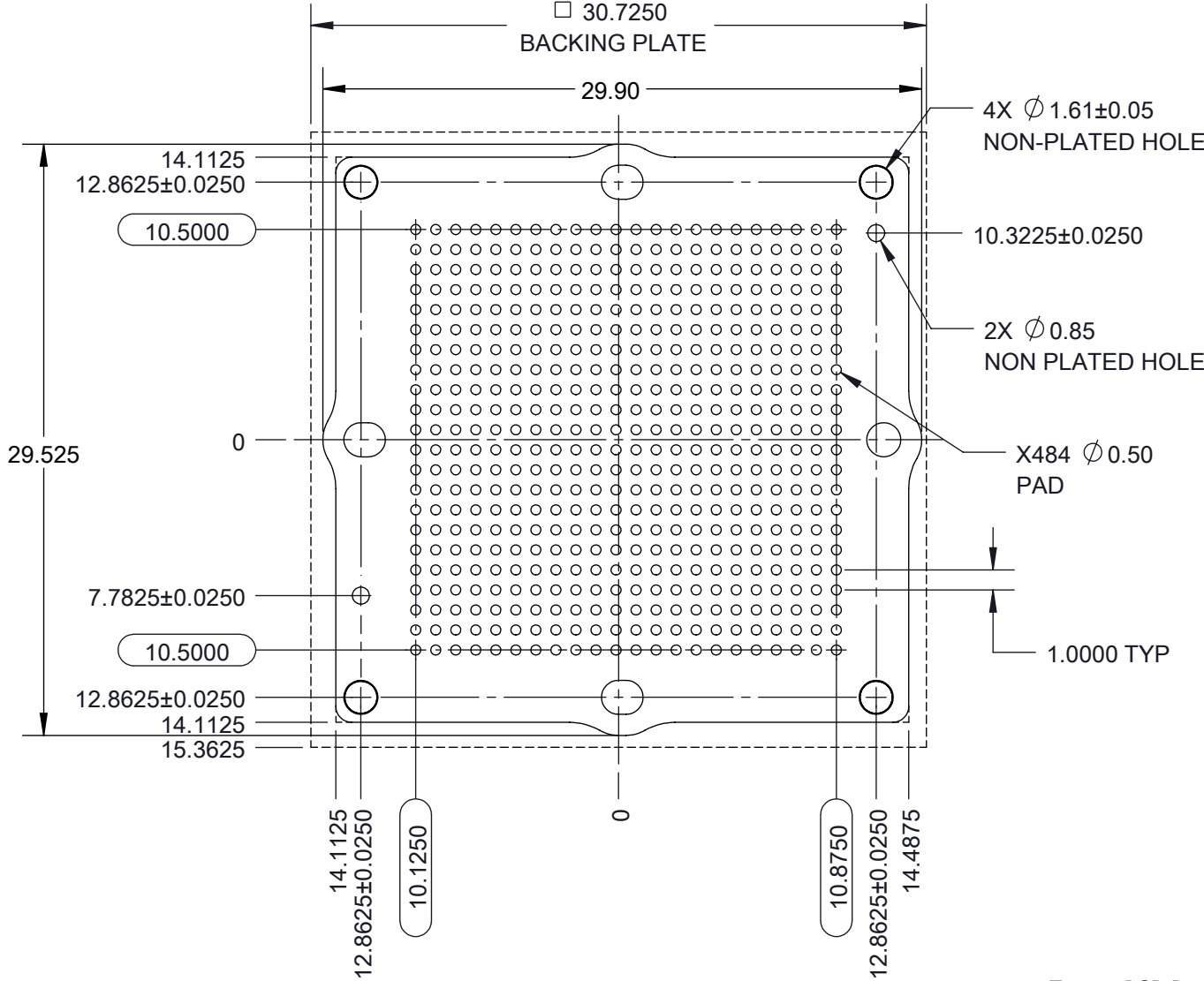
Description: CBT-BGA484 23x23mm 1mm 22x22 array

Primary dimension units are millimeters, Secondary dimension units are [inches], Weight is in grams.

Tolerances: Hole diameters $\pm 0.03\text{mm}$ [$\pm 0.001"$], Pitches (from true position) $\pm 0.025\text{mm}$ [$\pm 0.001"$], substrate thickness tolerance $\pm 10\%$, all other tolerances $\pm 0.13\text{mm}$ [$\pm 0.005"$] unless stated otherwise. Materials and specifications are subject to change without notice.

 <p>CBT-BGA-6001 Drawing Ironwood Electronics, Inc. Tele: (800) 404-0204 www.ironwoodelectronics.com</p>	<p>Material: Material <not specified> Finish: Weight: 144.32</p>	STATUS: Released	SHEET: 1 OF 5	REV. E
		ENG: S. Faiz	DRAWN BY: M. Raske	SCALE: 1:1
		FILE: CBT-BGA-6001	DATE: 10/19/2010	


Note: BGA pattern is not symmetrical with respect to the mounting holes



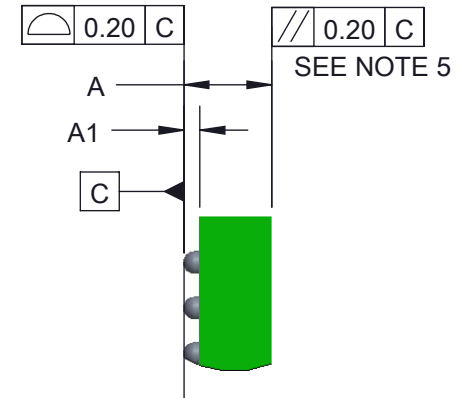
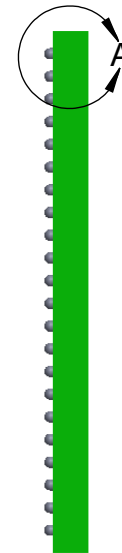
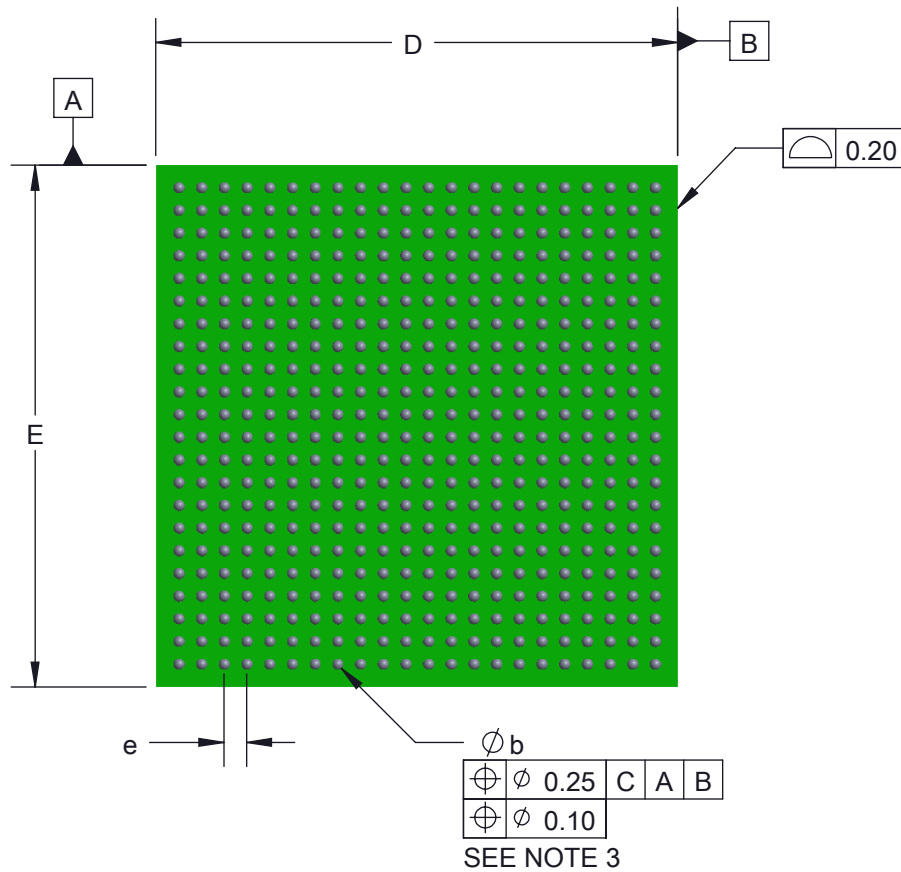
Target PCB Recommendations
 Total thickness: 1.6mm min.
 Plating: Gold or Solder finish
 PCB Pad height: same or higher than solder mask

Description: Recommended PCB Layout

Primary dimension units are millimeters, Secondary dimension units are [inches], Weight is in grams.
 Tolerances: Hole diameters $\pm 0.03\text{mm}$ [$\pm 0.001"$], Pitches (from true position) $\pm 0.025\text{mm}$ [$\pm 0.001"$], substrate thickness tolerance $\pm 10\%$, all other tolerances $\pm 0.13\text{mm}$ [$\pm 0.005"$] unless stated otherwise. Materials and specifications are subject to change without notice.

 CBT-BGA-6001 Drawing Ironwood Electronics, Inc. Tele: (800) 404-0204 www.ironwoodelectronics.com	Material: Material <not specified> Finish: Weight: 144.32	STATUS: Released	SHEET: 2 OF 5	REV. E
		ENG: S. Faiz	DRAWN BY: M. Raske	SCALE: 2:1
		FILE: CBT-BGA-6001	DATE: 10/19/2010	

Ironwood Package Code: BGA484C



DETAIL A
SCALE 6 : 1


DIM	Minimum	Maximum
A		2.5
A1	0.4	0.6
b		0.70
D	23.00 BSC	
E	23.00 BSC	
e	1.0 BSC	
ARRAY	22 X 22	
PIN COUNT	484	

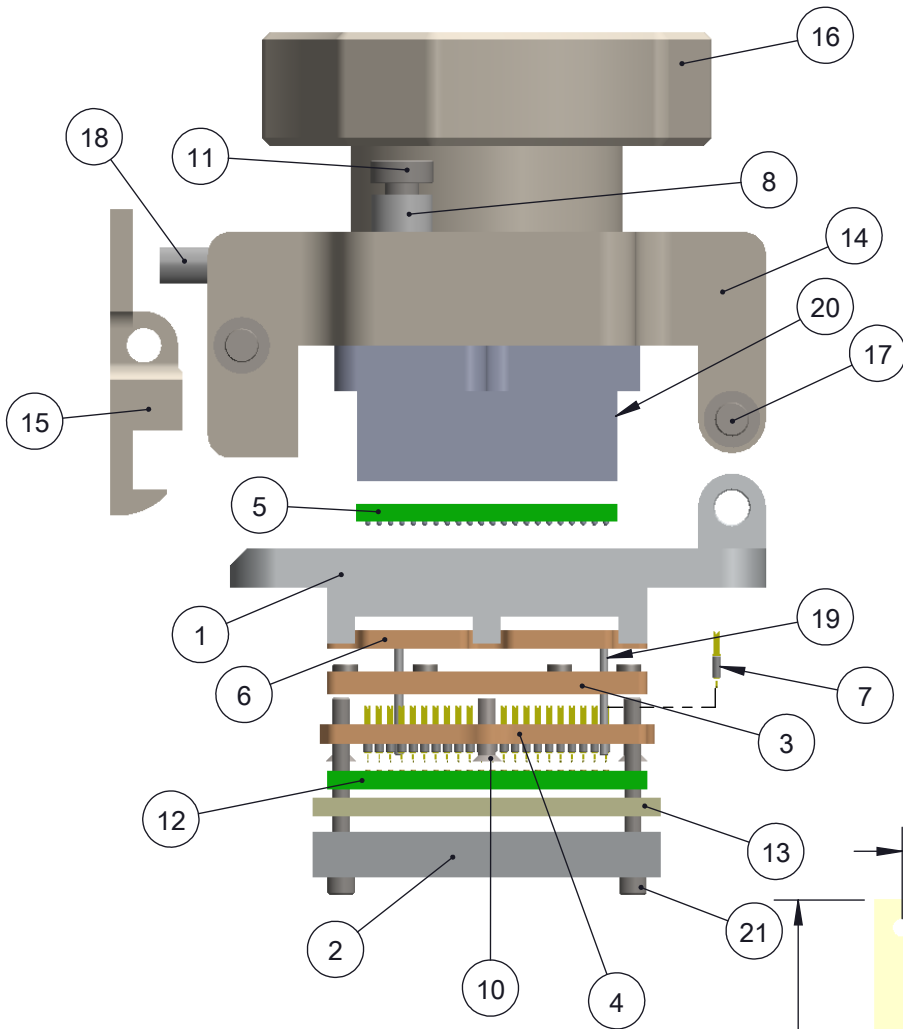
1. Dimensions are in millimeters.
2. Interpret dimensions and tolerances per ASME Y14.5M-1994.
3. Dimension b is measured at the maximum solder ball diameter, parallel to datum plane C.
4. Datum C (seating plane) is defined by the spherical crowns of the solder balls.
5. Parallelism measurement shall exclude any effect of mark on top surface of package.

Description: Compatible BGA

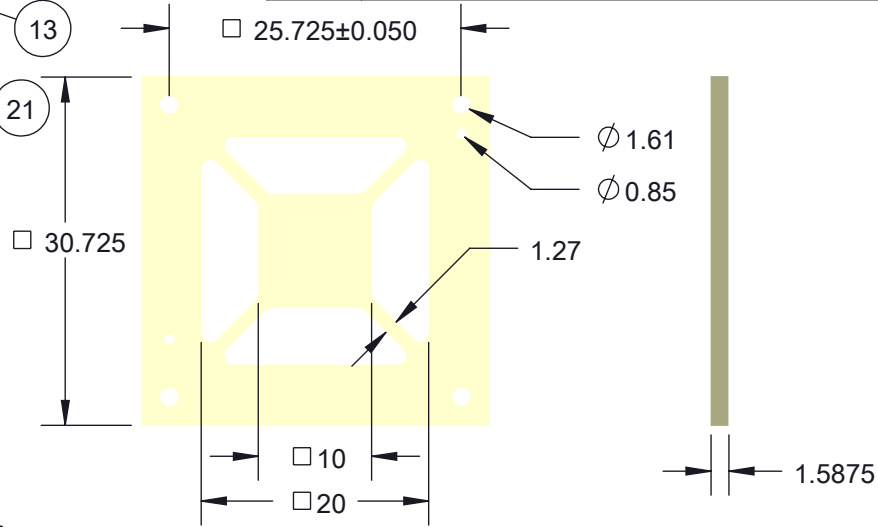
Primary dimension units are millimeters, Secondary dimension units are [inches], Weight is in grams.

Tolerances: Hole diameters $\pm 0.03\text{mm}$ [$\pm 0.001"$], Pitches (from true position) $\pm 0.025\text{mm}$ [$\pm 0.001"$], substrate thickness tolerance $\pm 10\%$, all other tolerances $\pm 0.13\text{mm}$ [$\pm 0.005"$] unless stated otherwise. Materials and specifications are subject to change without notice.

 CBT-BGA-6001 Drawing Ironwood Electronics, Inc. Tele: (800) 404-0204 www.ironwoodelectronics.com	Material: Material <not specified> Finish: Weight: 144.32	STATUS: Released	SHEET: 3 OF 5	REV. E
		ENG: S. Faiz	DRAWN BY: M. Raske	SCALE: 3:1
		FILE: CBT-BGA-6001	DATE: 10/19/2010	



ITEM NO.	DESCRIPTION	Material
1	CBT Socket Base Clamshell 23mm Ni plt with posts	7075-T6 Aluminum Alloy
2	SBT/CBT NI PLT BACKING PLT 23MM	7075-T6, Plate (SS)
3	Middle Guide 23X23mm 1mm 22x22 arr	Semitron MDS 100
4	Bottom Guide 23X23mm 1mm 22x22 arr	Semitron MDS 100
5	BGA chip for 23x23mm 1mm, 22x22array	Material <not specified>
6	Floating Guide 23X23mm 1mm 22x22 arr	Semitron MDS 100
7	Pogo Pin, 1mm Pitch SBT BGA pin	
8	Spring Clamshell lid assembly	Steel Music Wire
9	Floating Guide Spring	Alloy Steel (SS)
10	#0-80, 90 deg., head pin guide screw, Peek material 5.5715mm overall Length	PEEK unfilled
11	Screw, M3 x 12mm, Low Head Cap, SS	18-8 Stainless Steel
12	Target PCB for 23x23mm; 1mm, 22x22	Material <not specified>
13	Insulation plate for 23x23mm IC	FR4 High temp
14	Socket Lid	7075-T6 Aluminum Alloy
15	Latch	7075-T6 Aluminum Alloy
16	Compression Screw	7075-T6 Aluminum Alloy
17	Hinge Pin and Snap Ring, 3mm OD, 30mm long, 1045 Stl, Blk Oxide	AISI 1045 Steel, cold drawn
18	Precision Compression Spring, Zinc-Plated Music Wire, 1/2" Length, .12" OD, .016" Wire	Zinc Plated Music Wire
19	Dowel Pin, 1/32" x 3/8", SS	Chrome Stainless Steel
20	CBT 23mm Compression plate Ni Plated	7075-T6 Aluminum Alloy
21	#0-80 X .625 LG, SOC HD CAP SCREW, ALLOY STL, BLK OXIDE	Alloy Steel




Description: Socket Assy, Insulation Plate

Primary dimension units are millimeters, Secondary dimension units are [inches], Weight is in grams.

Tolerances: Hole diameters $\pm 0.03\text{mm}$ [$\pm 0.001"$], Pitches (from true position) $\pm 0.025\text{mm}$ [$\pm 0.001"$], substrate thickness tolerance $\pm 10\%$, all other tolerances $\pm 0.13\text{mm}$ [$\pm 0.005"$] unless stated otherwise. Materials and specifications are subject to change without notice.

Insulation Plate Specification


 CBT-BGA-6001 Drawing Ironwood Electronics, Inc. Tele: (800) 404-0204 www.ironwoodelectronics.com	Material: Material <not specified> Finish: Weight: 144.32	STATUS: Released	SHEET: 4 OF 5	REV. E
		ENG: S. Faiz	DRAWN BY: M. Raske	SCALE: 2:1
		FILE: CBT-BGA-6001	DATE: 10/19/2010	

Rev	Date	Initials	Description
A	10/19/10	MR	Original
B	01/24/13	DH	Updated latch
C	8/12/13	GL	Updated Socket Base
D	03/11/15	DH	Updated layout page
E	5/20/15	GL	Replaced #0-80 SS screw with #0-80 Peek mat'l screw 5.571mm long

Description: Revisions

Primary dimension units are millimeters, Secondary dimension units are [inches], Weight is in grams.

Tolerances: Hole diameters $\pm 0.03\text{mm}$ [$\pm 0.001"$], Pitches (from true position) $\pm 0.025\text{mm}$ [$\pm 0.001"$], substrate thickness tolerance $\pm 10\%$, all other tolerances $\pm 0.13\text{mm}$ [$\pm 0.005"$] unless stated otherwise. Materials and specifications are subject to change without notice.

 CBT-BGA-6001 Drawing Ironwood Electronics, Inc. Tele: (800) 404-0204 www.ironwoodelectronics.com	Material: Finish: Weight:	STATUS: Released	SHEET: 5 OF 5	REV. E
		ENG: S. Faiz	DRAWN BY: M. Raske	SCALE: 2:1
		FILE: CBT-BGA-6001	DATE: 10/19/2010	