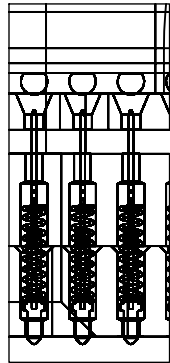
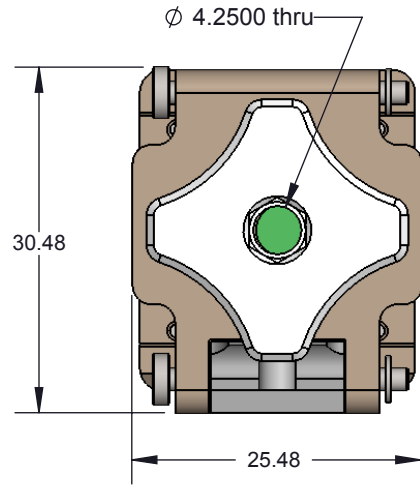


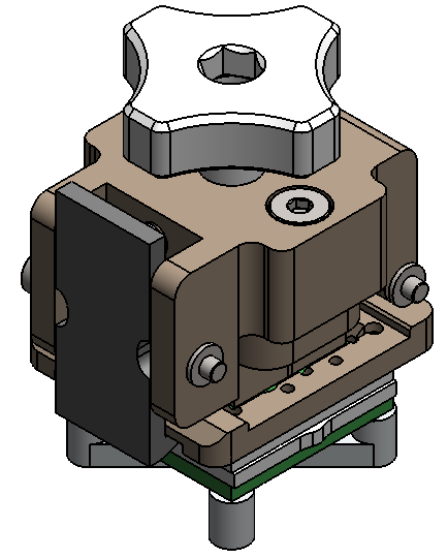
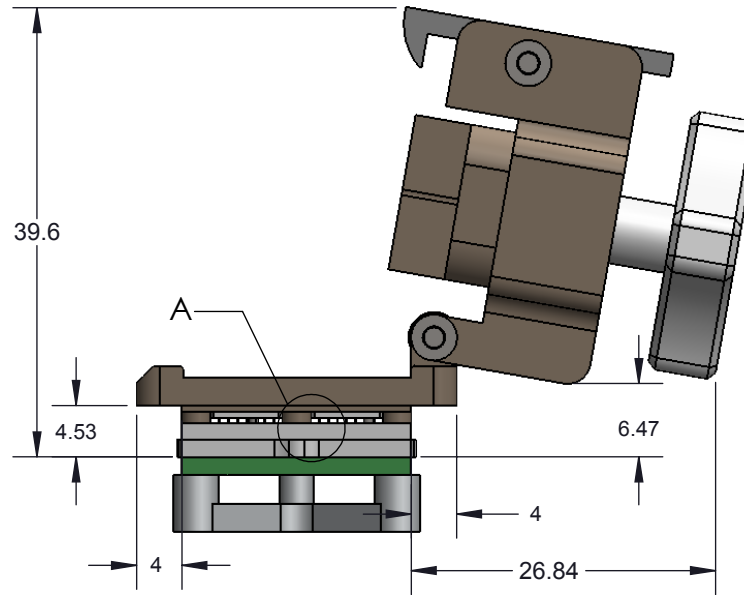
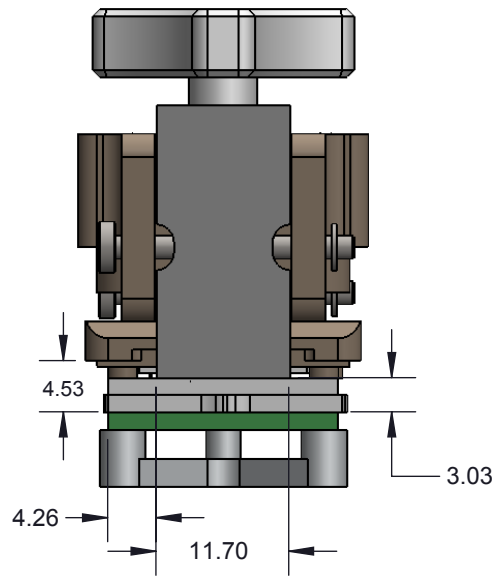
# CBT-BGA DIRECT MOUNT, SOLDERLESS SOCKET FOR BURN-IN AND TEST APPLICATIONS



DETAIL A  
SCALE 8 : 1

## FEATURES:


- Wide temperature range (-55C to +180C)
- High current capability (up to 4A)
- Excellent signal integrity at high frequencies
- Low and stable contact resistance for reliable production yield
- Highly compliant to accommodate wide co-planarity variations
- Automated probe manufacturing enables low cost and short lead time

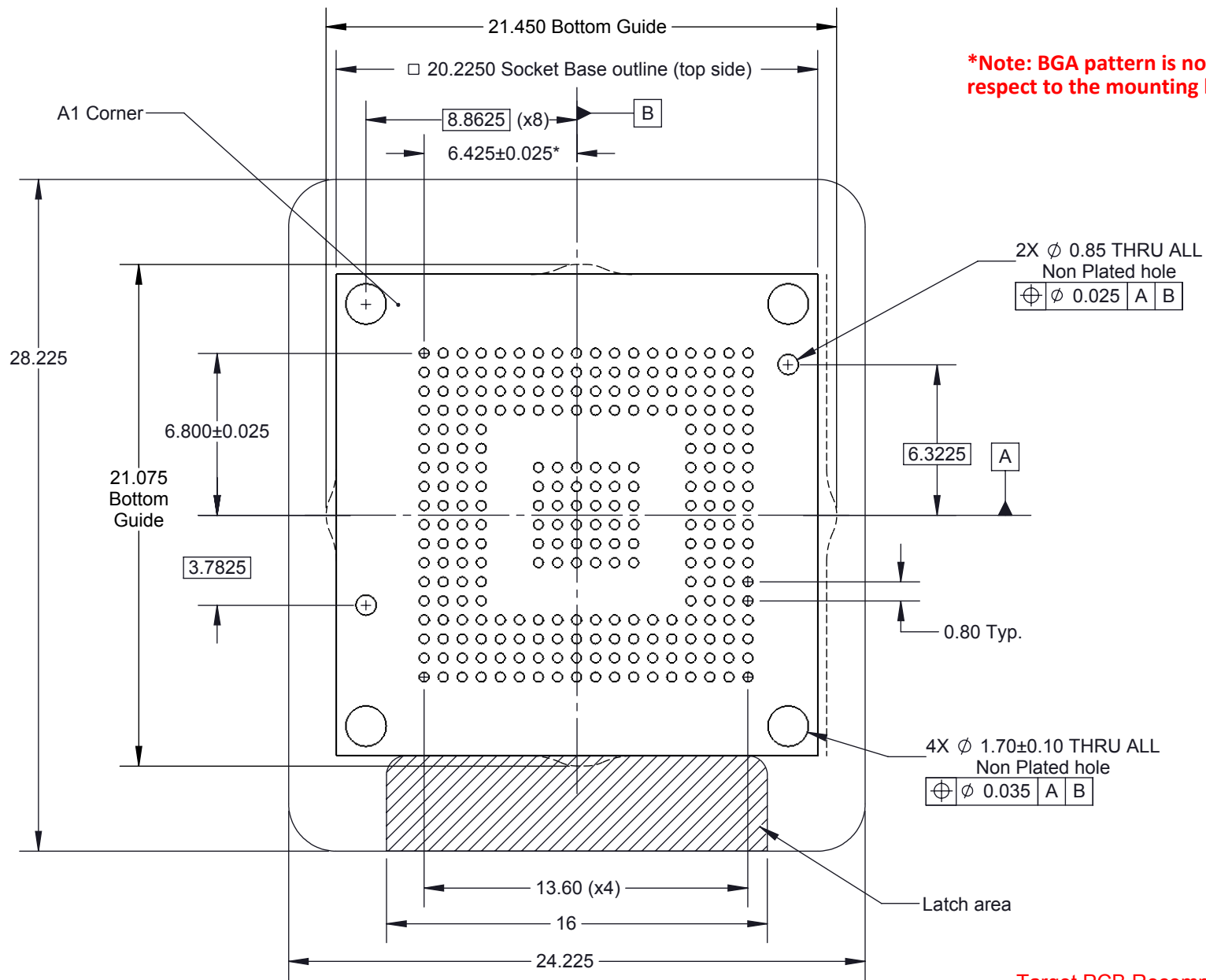


## Description: CBT-BGA260 15x15mm 0.8mm pitch 18x18 array

Primary dimension units are millimeters, Secondary dimension units are [inches], Weight is in grams.

Tolerances: Hole diameters  $\pm 0.0254\text{mm}$  [ $\pm 0.001$ "]. Pitches (from true position)  $\pm 0.0762\text{mm}$  [ $\pm 0.003$ "], substrate thickness tolerance  $\pm 10\%$ , all other tolerances  $\pm 0.127\text{mm}$  [ $\pm 0.005$ "] unless stated otherwise. Materials and specifications are subject to change without notice.

 <b>CBT-BGA-6016 Drawing</b> Ironwood Electronics, Inc. Tele: (800) 404-0204 www.ironwoodelectronics.com	Material: N/A Finish: N/A Weight: 41.51	STATUS: Released ENG: V. Panavala FILE: CBT-BGA-6016	SHEET: 1 OF 5 DRAWN BY: V. Panavala DATE: 8/29/2012	REV. C SCALE: 3:2



**\*Note: BGA pattern is not symmetrical with respect to the mounting holes**

2X Ø 0.85 THRU ALL  
Non Plated hole  
⊕ ⌀ 0.025 A B


4X Ø 1.70±0.10 THRU ALL  
Non Plated hole  
⊕ ⌀ 0.035 A B

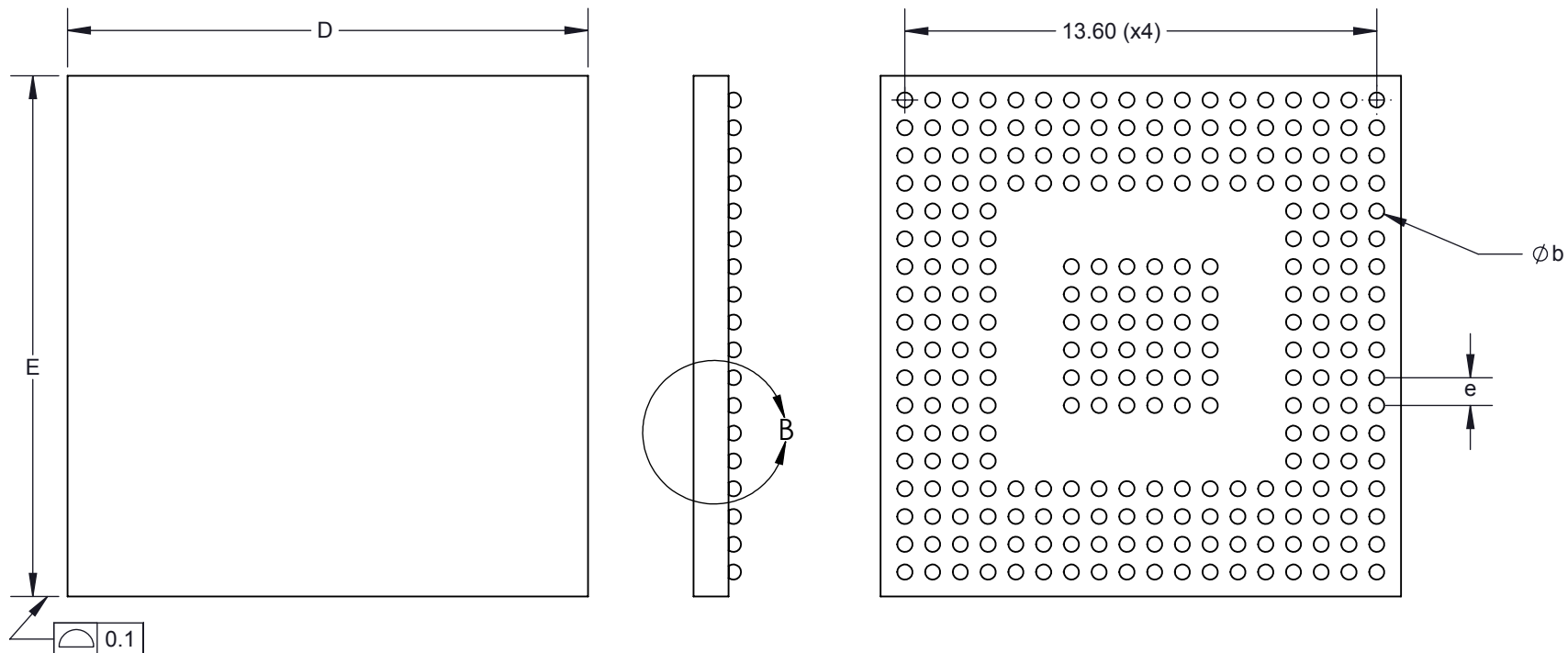
**Target PCB Recommendations**  
Total thickness: 1.6mm min.  
Plating: Gold or Solder finish

## Description: Recommended PCB Layout

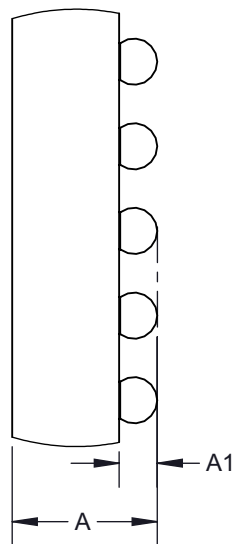
Primary dimension units are millimeters, Secondary dimension units are [inches], Weight is in grams.

Tolerances: Hole diameters  $\pm 0.0254\text{mm}$  [ $\pm 0.001"$ ], Pitches (from true position)  $\pm 0.0762\text{mm}$  [ $\pm 0.003"$ ], substrate thickness tolerance  $\pm 10\%$ , all other tolerances  $\pm 0.127\text{mm}$  [ $\pm 0.005"$ ] unless stated otherwise. Materials and specifications are subject to change without notice.

 <b>CBT-BGA-6016 Drawing</b> ©2015 Ironwood Electronics, Inc. Tele: (800) 404-0204 www.ironwoodelectronics.com	Material: N/A Finish: N/A Weight: 41.51	STATUS: Released ENG: V. Panavala FILE: CBT-BGA-6016	SHEET: 2 OF 5 DRAWN BY: V. Panavala DATE: 8/29/2012	REV. C SCALE: 4:1	



**DETAIL B  
SCALE 14 : 1**




DIM	Minimum	Maximum
A		1.5
A1	0.30	0.35
b	0.40	0.50
D	15 BSC	
E	15 BSC	
e	0.8 BSC	
PIN COUNT		260

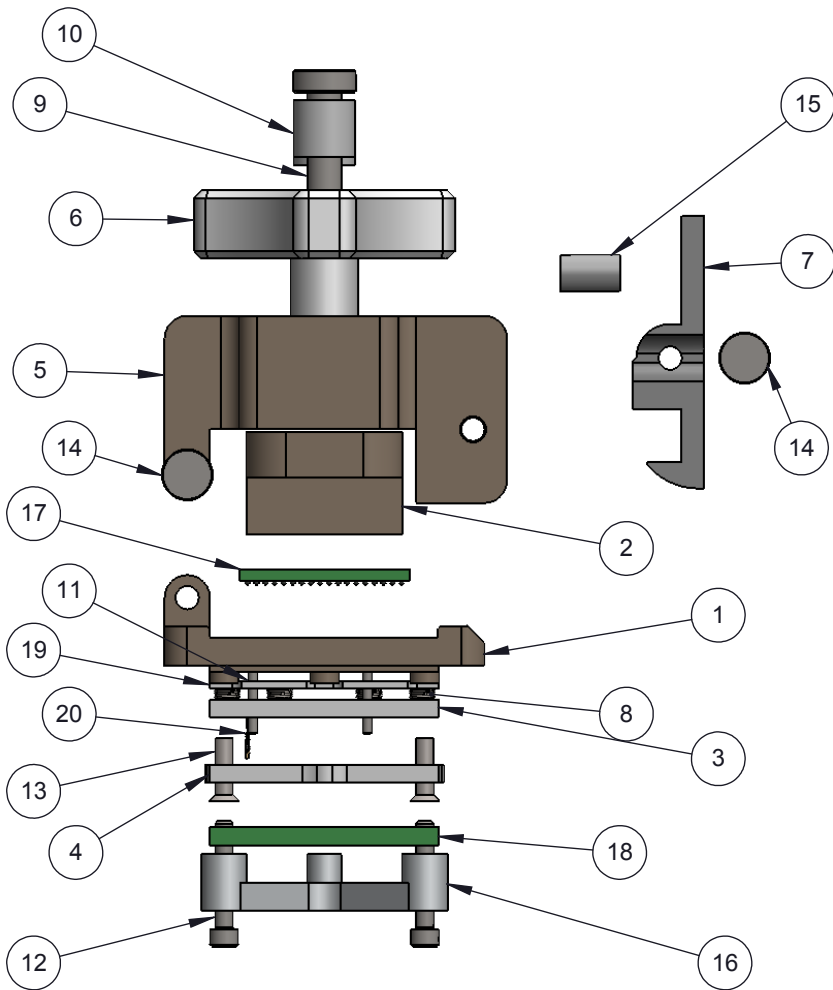
**Ironwood Package Code: BGA260B**

**Description: Compatible BGA**

Primary dimension units are millimeters, Secondary dimension units are [inches], Weight is in grams.

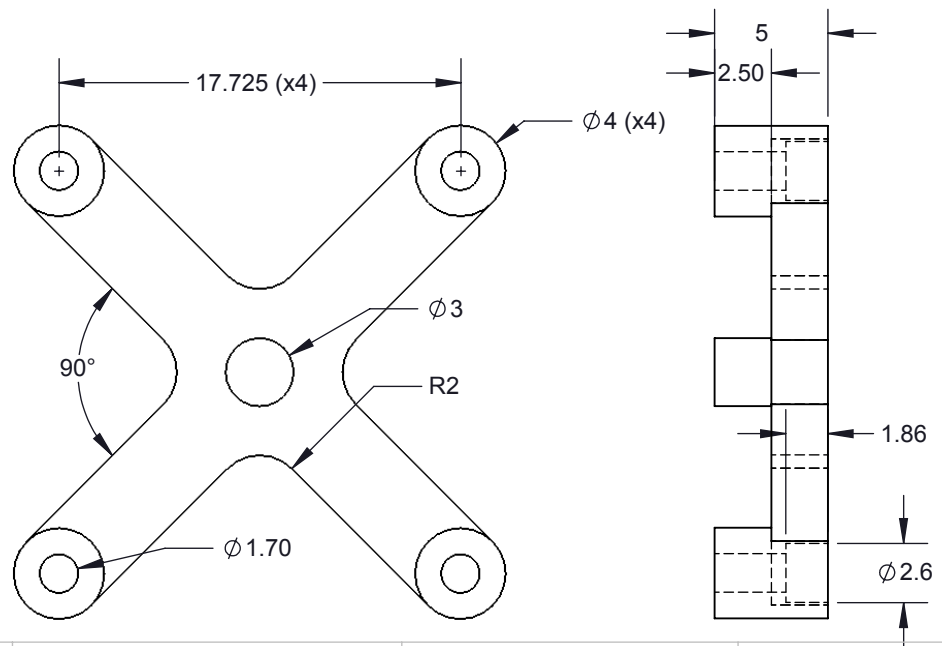
Tolerances: Hole diameters  $\pm 0.0254\text{mm}$  [ $\pm 0.001"$ ], Pitches (from true position)  $\pm 0.0762\text{mm}$  [ $\pm 0.003"$ ], substrate thickness tolerance  $\pm 10\%$ , all other tolerances  $\pm 0.127\text{mm}$  [ $\pm 0.005"$ ] unless stated otherwise. Materials and specifications are subject to change without notice.

 <p><b>CBT-BGA-6016 Drawing</b> ©2015 Ironwood Electronics, Inc. Tele: (800) 404-0204 www.ironwoodelectronics.com</p>	<p>Material: N/A Finish: N/A Weight: 41.51</p>	<p>STATUS: Released ENG: V. Panavala FILE: CBT-BGA-6016</p>	<p>SHEET: 3 OF 5 DRAWN BY: V. Panavala DATE: 8/29/2012</p>	<p>REV. C SCALE: 5:1</p>
---	--	---	--	------------------------------



ITEM NO.	DESCRIPTION	Material
1	CBT Socket Base 15mm	7075-T6 Aluminum Alloy
2	CBT Compression Plate 15mm IC	7075-T6 Aluminum Alloy
3	Middle Pogo Guide BGA296 15x15mm 0.8mm pitch 18x18 array	PEEK Ceramic filled
4	Bottom Pogo Guide BGA296 15x15mm 0.8mm pitch 18x18 array	PEEK Ceramic filled
5	Clam Shell Socket Lid 10mm IC	7075-T6 Aluminum Alloy
6	M6x1 fluted knob compression screw 4.25mm thru hole	7075-T6 Aluminum Alloy
7	Latch 6- 10mm Ni plated	7075-T6 Aluminum Alloy
8	Floating Guide Spring	Alloy Steel (SS)
9	Screw, M3 x 12mm, Low Head Cap, SS	18-8 Stainless Steel
10	Spring Clamshell lid assembly	Steel Music Wire
11	Dowel pin, 1/32" X 1/4", SS	Stainless Steel (18-8)
12	#0-80 X .375 LG, SOC HD CAP SCREW, ALLOY STL, BLK OXIDE	Alloy Steel
13	#0-80, 90 deg., head pin guide screw, Peek material 5.5715mm overall Length	PEEK unfilled
14	Hinge Pin and Snap Ring, 2mm OD, 19mm long, SS	Stainless Steel (ferritic)
15	Precision Compression Spring, Zinc-Plated Music Wire, 1/2" Length, .12" OD, .016" Wire	Zinc Plated Music Wire
16	Backing Plate 5 post 15mm IC	7075-T6 Aluminum Alloy
17	BGA260 15x15mm 0.8mm chip	Material <not specified>
18	PCB BGA260 18x18 array 0.8mm pitch	High Temp FR4
19	Floating Guide BGA296 15x15mm 0.8mm pitch 18x18 array	PEEK Ceramic filled
20	SBT Pin, SBT-BGA 0.5mm-0.8mm	


### Backing plate Specification

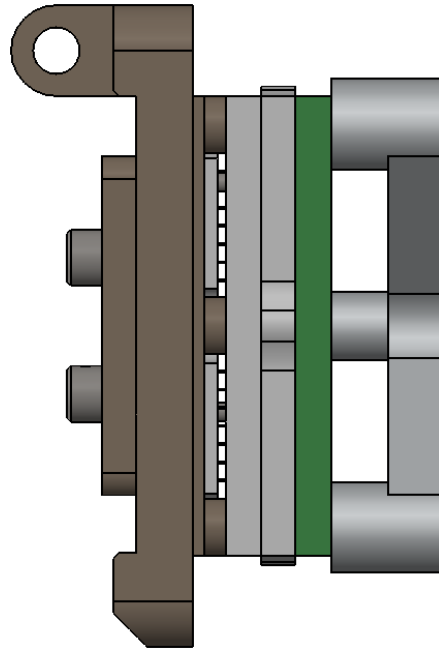
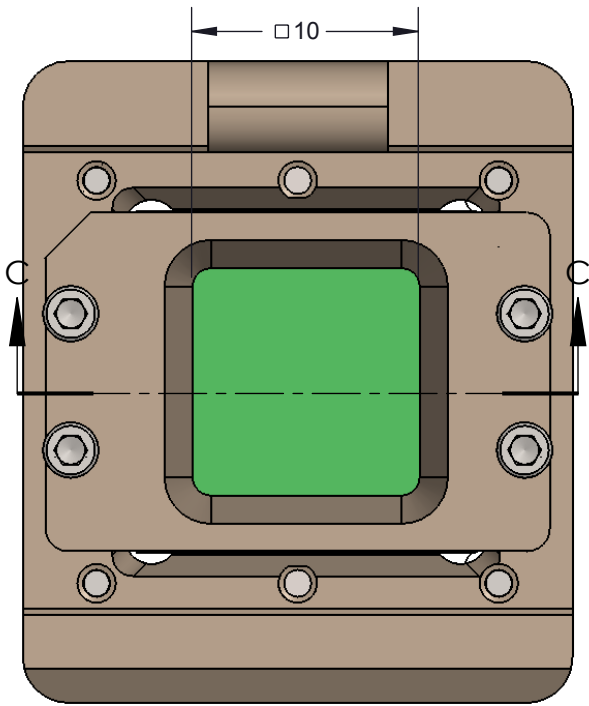


### Description: Socket Assy, detail

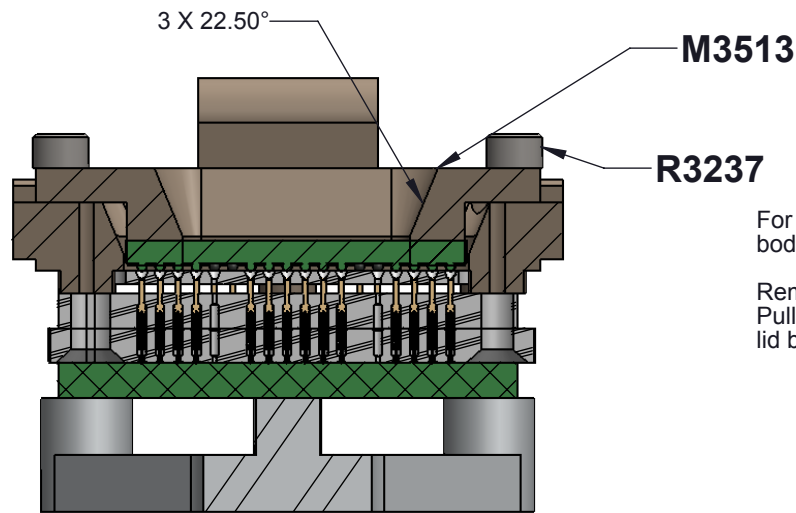
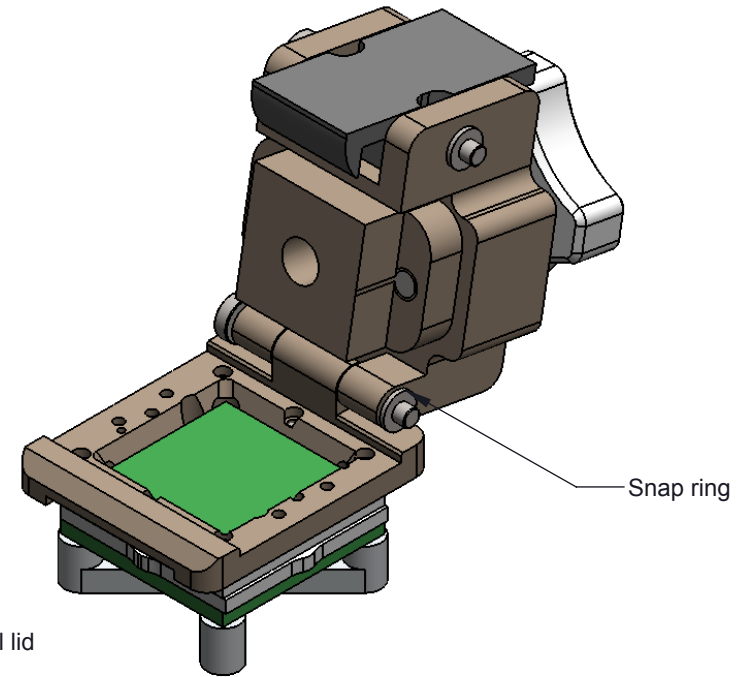
Primary dimension units are millimeters, Secondary dimension units are [inches], Weight is in grams.

Tolerances: Hole diameters  $\pm 0.0254\text{mm}$  [ $\pm 0.001"$ ]. Pitches (from true position)  $\pm 0.0762\text{mm}$  [ $\pm 0.003"$ ], substrate thickness tolerance  $\pm 10\%$ , all other tolerances  $\pm 0.127\text{mm}$  [ $\pm 0.005"$ ] unless stated otherwise. Materials and specifications are subject to change without notice.

 <b>CBT-BGA-6016 Drawing</b> ©2015 Ironwood Electronics, Inc. Tele: (800) 404-0204 www.ironwoodelectronics.com	Material: N/A Finish: N/A Weight: 41.51	STATUS: Released ENG: V. Panavala FILE: CBT-BGA-6016	SHEET: 4 OF 5 DRAWN BY: V. Panavala DATE: 8/29/2012	REV. C SCALE: 3:2
---	---	--	---	----------------------



Open top Lid  
M3513 and  
hardware R3237 is  
sold separately.



For the open top configuration clamshell lid body can be removed if needed.

Remove the Snap ring using a long nose pliers. Pull the hinge pin out to remove the clamshell lid body off the socket base.

**SECTION C-C**

**Description: Socket Assy with open top lid**

Primary dimension units are millimeters, Secondary dimension units are [inches], Weight is in grams.

Tolerances: Hole diameters  $\pm 0.0254\text{mm}$  [ $\pm 0.001"$ ], Pitches (from true position)  $\pm 0.0762\text{mm}$  [ $\pm 0.003"$ ], substrate thickness tolerance  $\pm 10\%$ , all other tolerances  $\pm 0.127\text{mm}$  [ $\pm 0.005"$ ] unless stated otherwise. Materials and specifications are subject to change without notice.

Rev	Date	Initials	Description
A	03/29/12	VP	Original
B	02/18/14	DH	Changed current rating of pin
C	4/2/15	RP/MR	Changed spring pin and guides to new design. Changed dowel pin protrusion length. Contact Ironwood for details