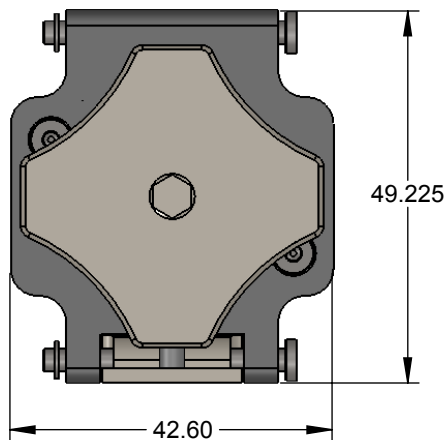
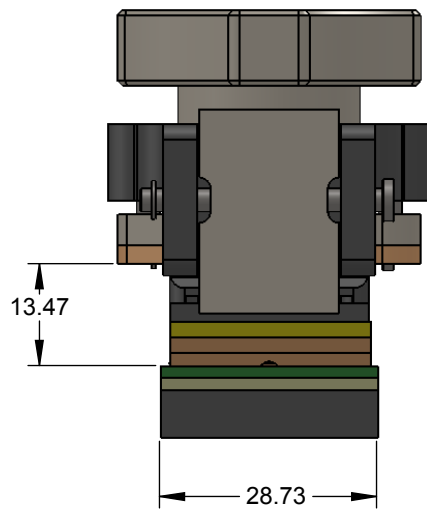


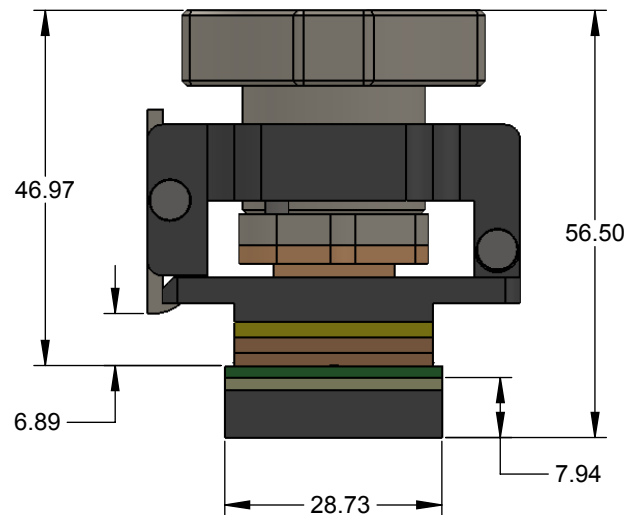
CBT-LGA DIRECT MOUNT, SOLDERLESS SOCKET FOR BURN-IN AND TEST APPLICATIONS



TOP VIEW



FRONT VIEW

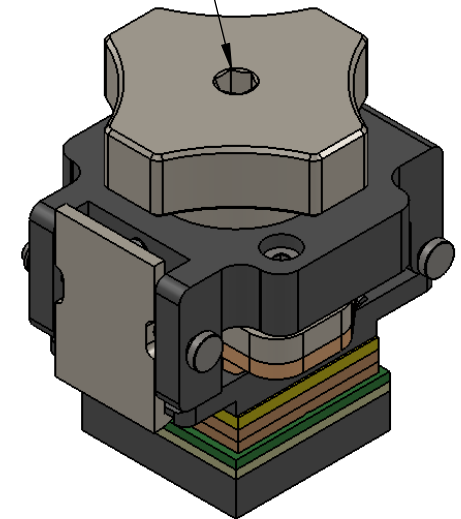


SIDE VIEW

Features

- Wide temperature range (-55C to +180C).
- High current capability (up to 4A).
- Excellent signal integrity at high frequencies.
- Low and stable contact resistance for reliable production yield.
- Highly compliant to accommodate wide co-planarity variations.
- Automated probe manufacturing enables low cost and short lead time.
- Directly mounts to target PCB (needs tooling holes) with hardware.
- Minimum real estate required.
- Compression plate distributes forces evenly.
- Clamshell lid.


Recommended Torque: 1 in-lb.



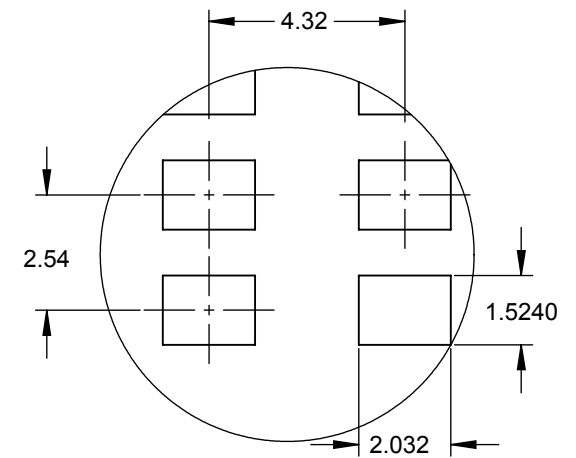
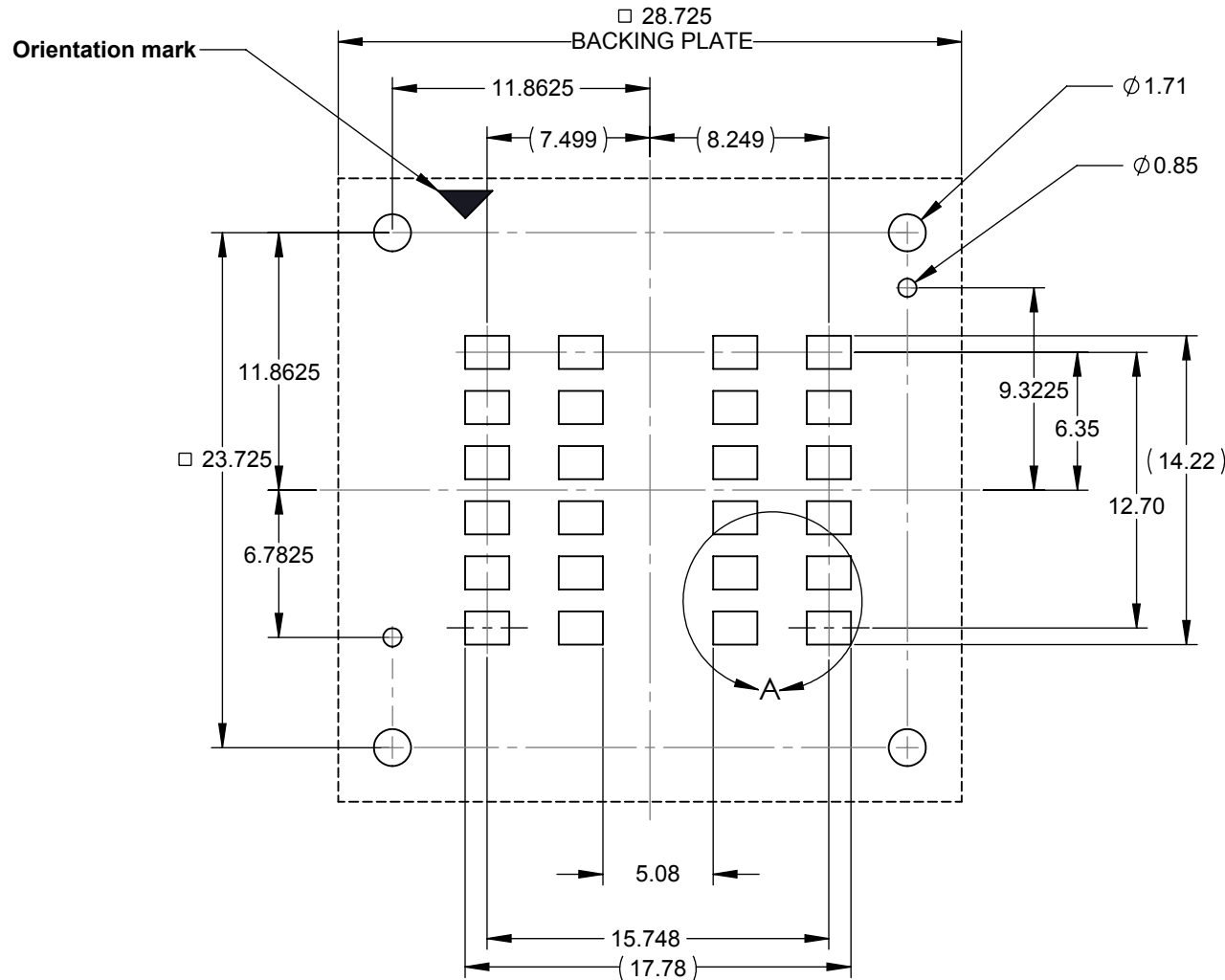
Description: SBT Socket for 20.32mm x 17.78mm

Primary dimension units are millimeters, Secondary dimension units are [inches], Weight is in grams.

Tolerances: Hole diameters $\pm 0.03\text{mm}$ [$\pm 0.001"$], Pitches (from true position) $\pm 0.025\text{mm}$ [$\pm 0.001"$], substrate thickness tolerance $\pm 10\%$, all other tolerances $\pm 0.13\text{mm}$ [$\pm 0.005"$] unless stated otherwise. Materials and specifications are subject to change without notice.

CBT-LGA-5002 Drawing  Ironwood Electronics, Inc. Tele: (800) 404-0204 www.ironwoodelectronics.com	Material: N/A Finish: N/A Weight: 135.37	STATUS: Released	SHEET: 1 OF 4	REV. B
		ENG: S. Faiz	DRAWN BY: S. Delano	SCALE: 1:1
		FILE: CBT-LGA-5002 Dwg	DATE: 7/23/2013	

*Note: BGA pattern is not symmetrical with respect to the mounting holes. It is offset by 0.375mm to the right of center.




DETAIL A
SCALE 6 : 1

Target PCB Recommendations
Total thickness: 1.5mm min.
Plating: Gold or Solder finish

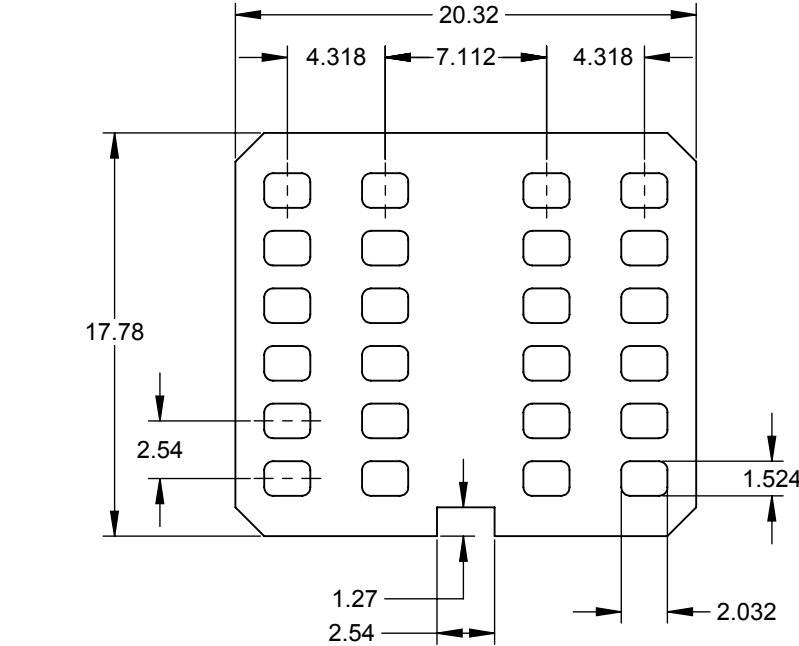
Description: Recommended PCB layout

Primary dimension units are millimeters, Secondary dimension units are [inches], Weight is in grams.

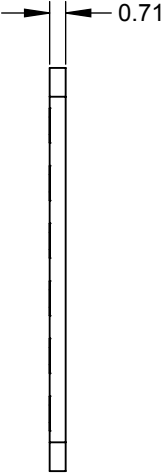
Tolerances: Hole diameters $\pm 0.03\text{mm}$ [$\pm 0.001"$], Pitches (from true position) $\pm 0.025\text{mm}$ [$\pm 0.001"$], substrate thickness tolerance $\pm 10\%$, all other tolerances $\pm 0.13\text{mm}$ [$\pm 0.005"$] unless stated otherwise. Materials and specifications are subject to change without notice.

CBT-LGA-5002 Drawing  Ironwood Electronics, Inc. Tele: (800) 404-0204 www.ironwoodelectronics.com	Material: N/A Finish: N/A Weight: 135.37	STATUS: Released ENG: S. Faiz FILE: CBT-LGA-5002 Dwg	SHEET: 2 OF 4 DRAWN BY: S. Delano DATE: 7/23/2013	REV. B SCALE: 3:1
---	--	--	---	----------------------

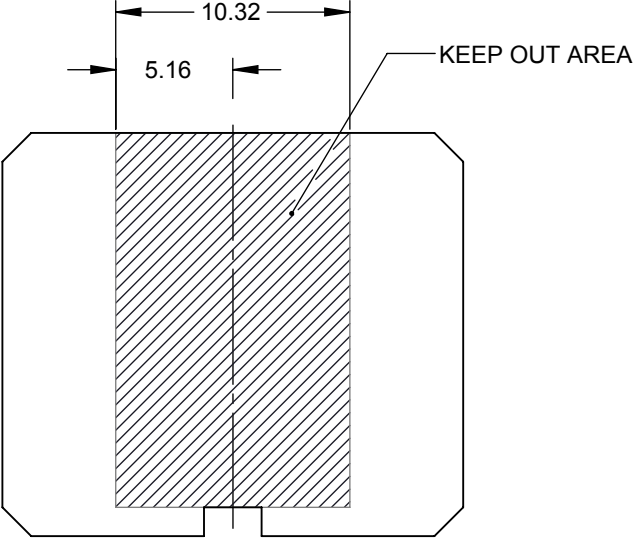
Ironwood package code: LGA24B



BOTTOM VIEW




SIDE VIEW

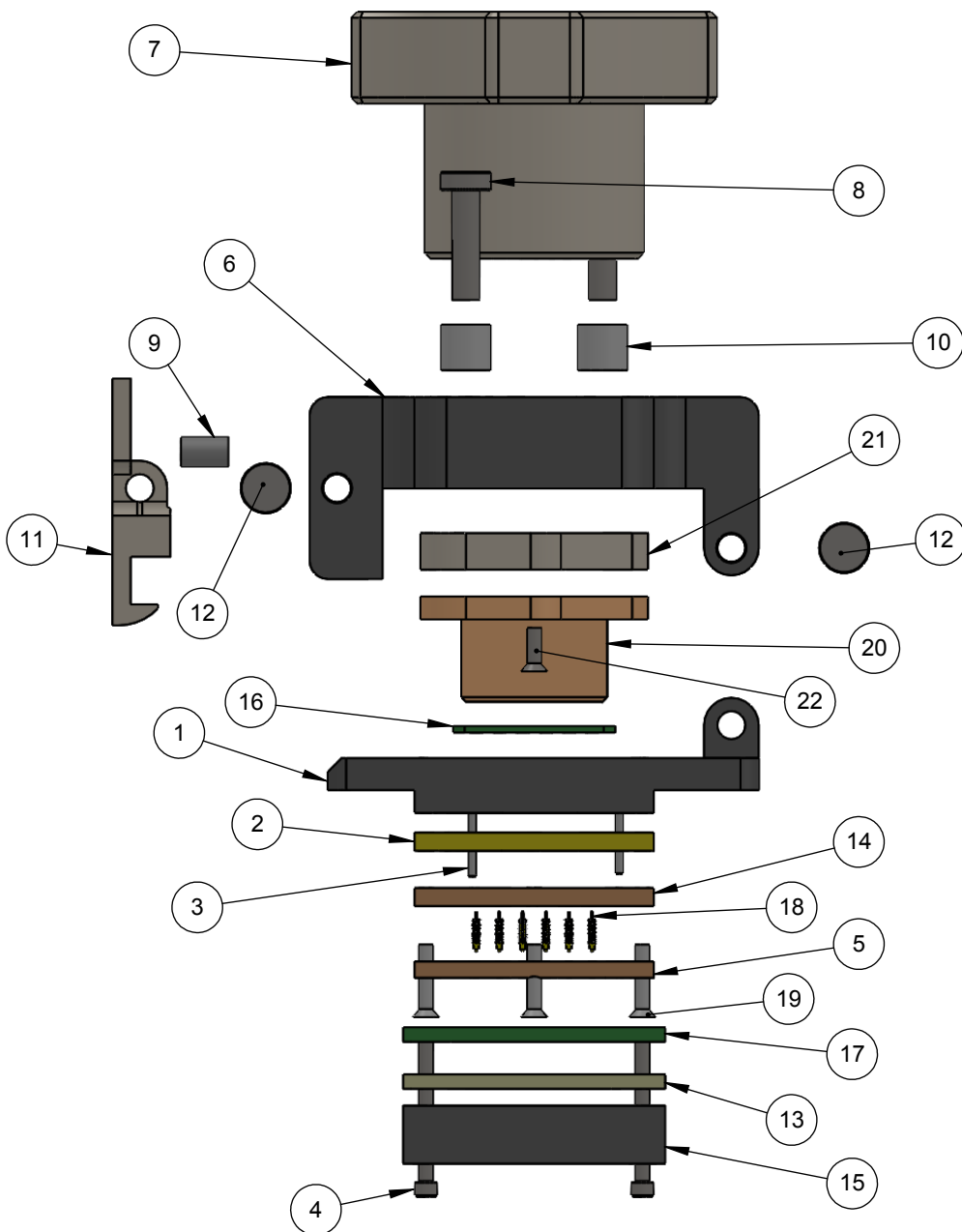


TOP VIEW

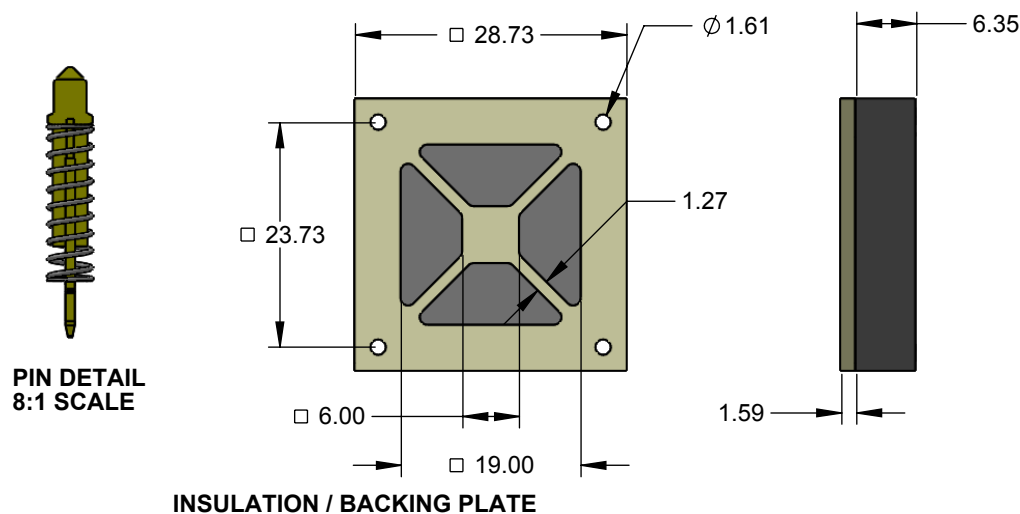
Description: Compatible Device

Primary dimension units are millimeters, Secondary dimension units are [inches], Weight is in grams.
Tolerances: Hole diameters $\pm 0.03\text{mm}$ [$\pm 0.001"$], Pitches (from true position) $\pm 0.025\text{mm}$ [$\pm 0.001"$], substrate thickness tolerance $\pm 10\%$, all other tolerances $\pm 0.13\text{mm}$ [$\pm 0.005"$] unless stated otherwise. Materials and specifications are subject to change without notice.

	CBT-LGA-5002 Drawing Ironwood Electronics, Inc. Tele: (800) 404-0204 www.ironwoodelectronics.com	Material: N/A Finish: N/A Weight: 135.37	STATUS: Released	SHEET: 3 OF 4	REV. B
			ENG: S. Faiz	DRAWN BY: S. Delano	SCALE: 3:1
			FILE: CBT-LGA-5002 Dwg	DATE: 7/23/2013	



ITEM NO.	DESCRIPTION	Material
1	Socket Base 21x21mm	7075-T6 Aluminum Alloy
2	IC Guide 20.2x17.78mm with 0.375 shift	Torlon 4203
3	Dowel Pin, 1/32" x 3/8", SS	Chrome Stainless Steel
4	#0-80 X .625 LG, SOC HD CAP SCREW, ALLOY STL, BLK OXIDE	Alloy Steel
5	Bottom Guide 1mm pitch spring pin	Semitron MDS 100
6	Socket Lid	7075-T6 Aluminum Alloy
7	Compression Screw	7075-T6 Aluminum Alloy
8	Screw, M3 x 12mm, Low Head Cap, SS	18-8 Stainless Steel
9	Precision Compression Spring, Zinc-Plated Music Wire, 1/2" Length, .12" OD, .016" Wire	Zinc Plated Music Wire
10	Spring Clamshell lid assembly	Steel Music Wire
11	Latch	7075-T6 Aluminum Alloy
12	Hinge Pin and Snap Ring, 3mm OD, 30mm long, 304 Stainless steel	Stainless Steel (304)
13	Insulation plate, 21x21mm IC	High Temp FR4
14	Top Guide for 1mm pitch spring pin	Semitron MDS 100
15	Backing Plate	7075-T6 Alum. Alloy, Black Anodized
16	Test Chip-C10978	FR4 Standard
17	Test PCB-C10978	FR4 Standard
18	Pogo Pin, 1mm Pitch SBT LGA pin	Material <not specified>
19	Screw, #0-80 X .313", Flat, SS	Material <not specified>
20	Compression Plate bottom	Utem 1000
21	Compression Plate top	7075-T6 Aluminum Alloy
22	Screw, #0-80 X .188", Flat, SS	Stainless Steel (18-8)




Description: Socket det, Ins Plt, Pin Det

Primary dimension units are millimeters, Secondary dimension units are [inches], Weight is in grams.

Tolerances: Hole diameters $\pm 0.03\text{mm}$ [$\pm 0.001"$], Pitches (from true position) $\pm 0.025\text{mm}$ [$\pm 0.001"$], substrate thickness tolerance $\pm 10\%$, all other tolerances $\pm 0.13\text{mm}$ [$\pm 0.005"$] unless stated otherwise. Materials and specifications are subject to change without notice.

Rev	Date	Initials	Description
A	04/13/13	SD	Original
B	09/26/14	DH	Chnaged IC Guide material to Torlon

CBT-LGA-5002 Drawing  Ironwood Electronics, Inc. Tele: (800) 404-0204 www.ironwoodelectronics.com		Material: N/A Finish: N/A Weight: 135.37	STATUS: Released ENG: S. Faiz FILE: CBT-LGA-5002 Dwg	SHEET: 4 OF 4 DRAWN BY: S. Delano DATE: 7/23/2013	REV. B SCALE: 1.25:1
---	--	--	--	---	-------------------------