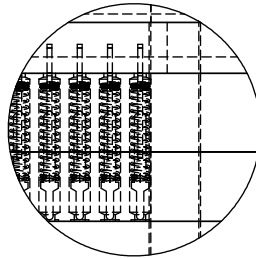
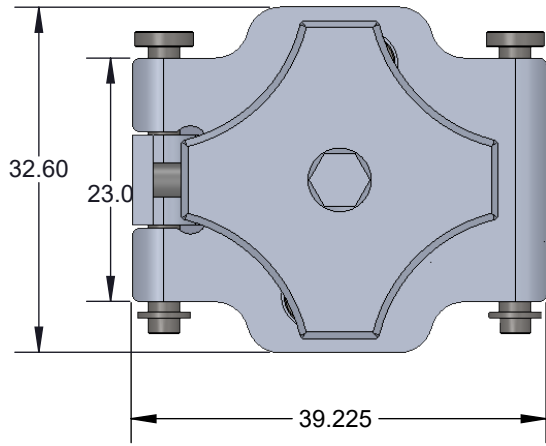


Clamshell Spring Pin Socket - Direct mount, solderless

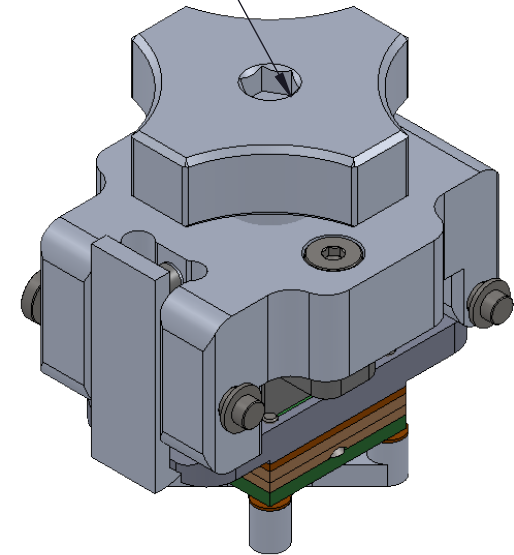
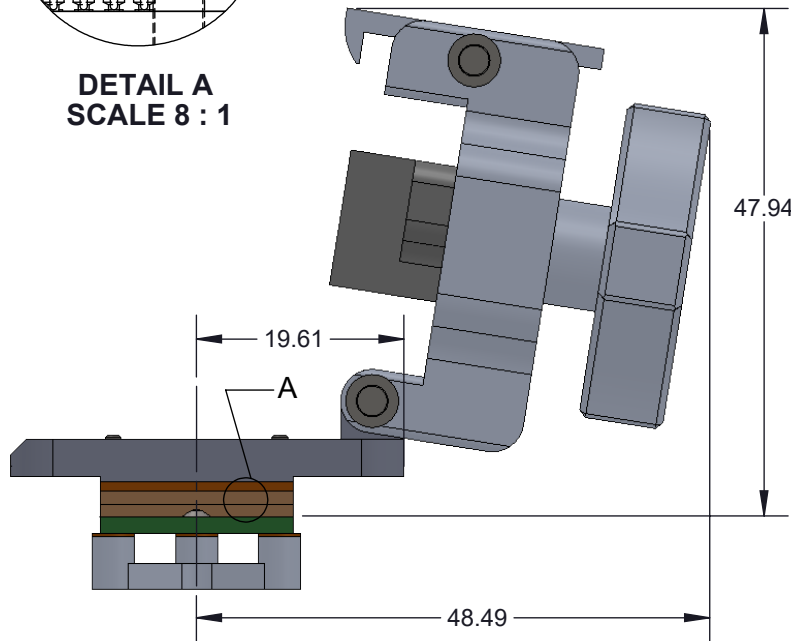
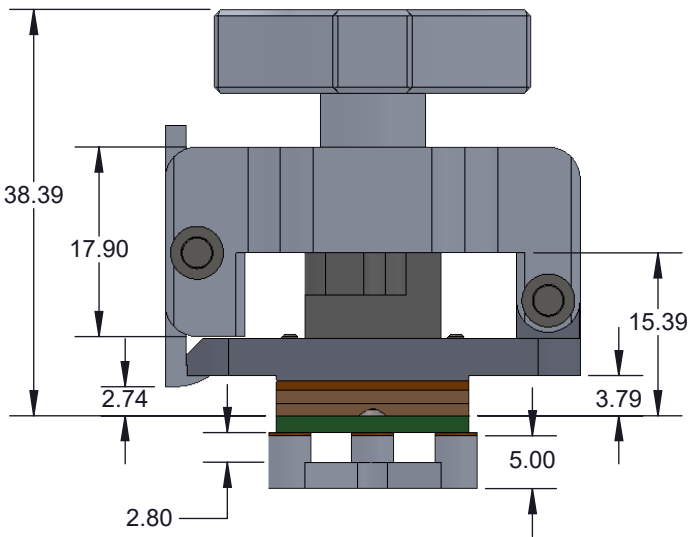
Features

- Wide temperature range (-55C to +180C).
- High current capability (up to 1.8A).
- Excellent signal integrity at high frequencies.
- Low and stable contact resistance for reliable production yield.
- Highly compliant to accommodate wide IC package co-planarity variations.
- Clamshell lid



DETAIL A
SCALE 8 : 1


Recommended Torque = 1.5-2 in-lbs

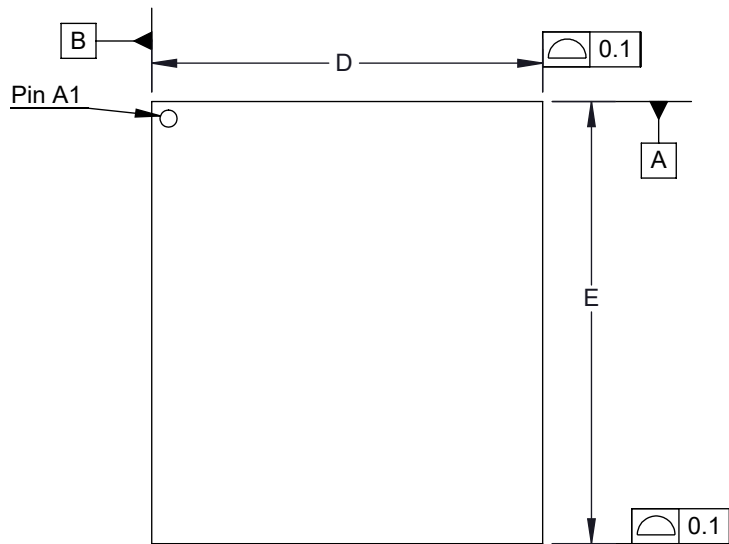


Description: CBT-LGA 11.5x13mm 0.5mm BGA162 without solder ball

Primary dimension units are millimeters, Secondary dimension units are [inches], Weight is in grams.

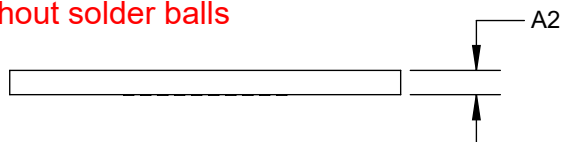
Tolerances: Hole diameters $\pm 0.03\text{mm}$ [$\pm 0.001"$], Pitches (from true position) $\pm 0.025\text{mm}$ [$\pm 0.001"$], substrate thickness tolerance $\pm 10\%$, all other tolerances $\pm 0.13\text{mm}$ [$\pm 0.005"$] unless stated otherwise. Materials and specifications are subject to change without notice.

 CBT-LGA-5007 Drawing Ironwood Electronics, Inc. Tele: (800) 404-0204 www.ironwoodelectronics.com	Material: N/A Finish: N/A Weight: 65.16	STATUS: Released ENG: S. Huang FILE: CBT-LGA-5007 Dwg	SHEET: 1 OF 4 DRAWN BY: M. Raske DATE: 01/30/2014	REV. B SCALE: 1.4:1

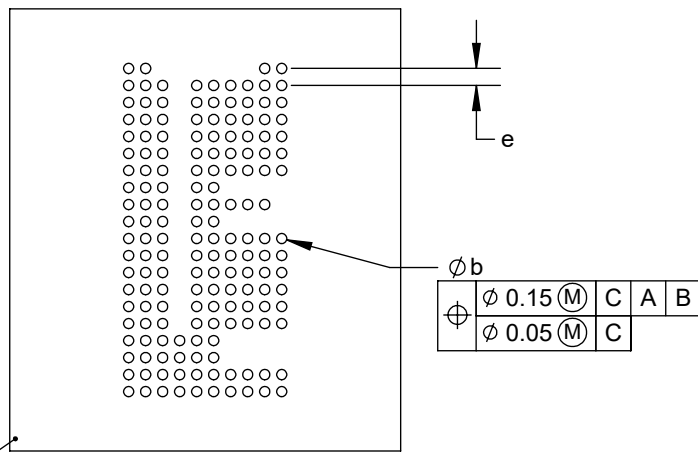


TOP VIEW

BGA without solder balls



SIDE VIEW



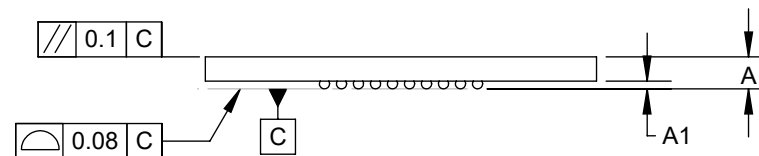
BOTTOM VIEW

Ironwood package code: **BGA162B (equivalent)**

NOTE: The socket is only for BGA without solder balls.

DIM	MIN	NOM	MAX
A			1.00
A1	0.17	0.22	0.27
A2	0.61	0.66	0.71
D	11.43	11.50	11.57
E	12.93	13.00	13.07
b	0.25	0.30	0.35
e	0.5 BSC		

Array: 10x20




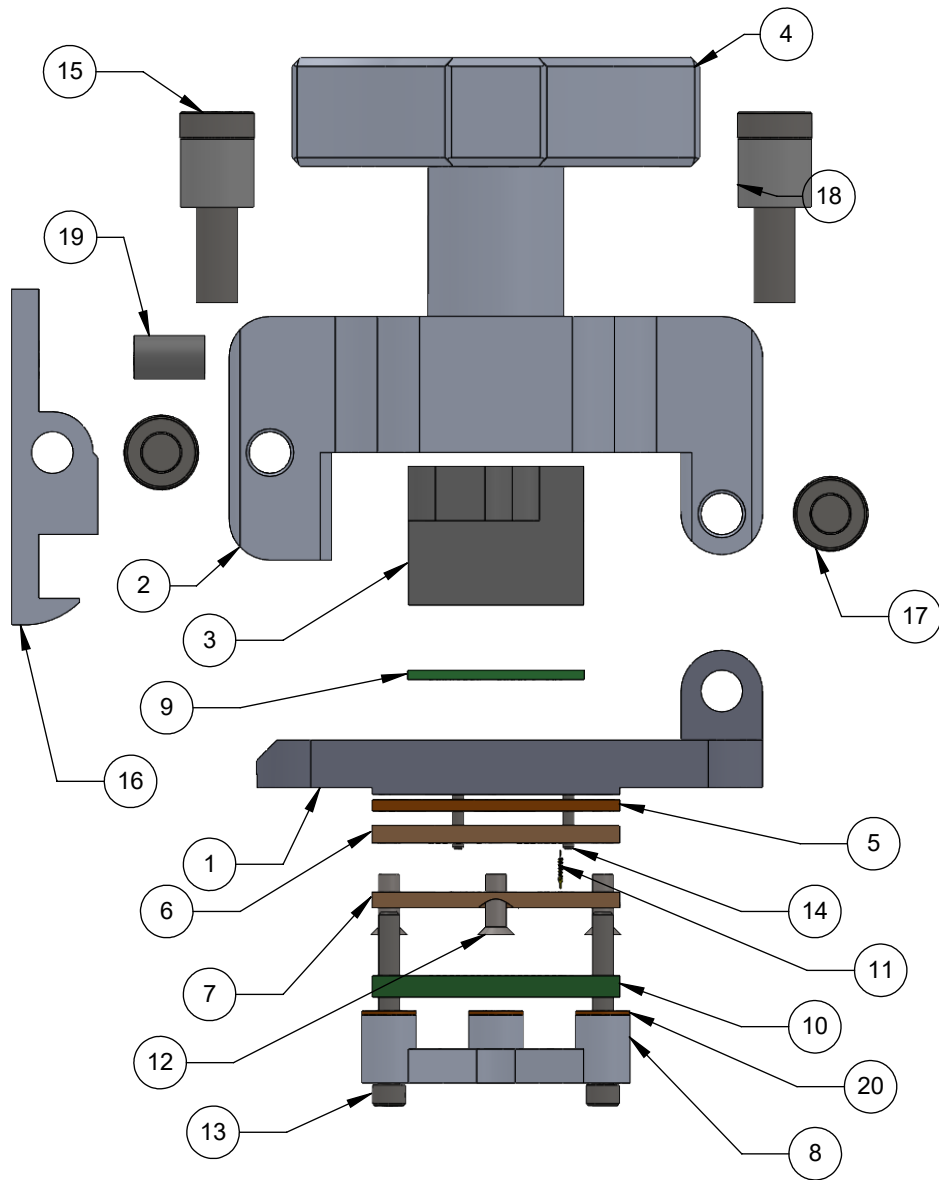
Original BGA package SIDE VIEW

Description: Compatible package

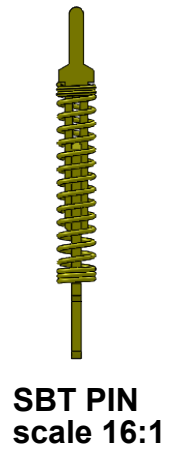
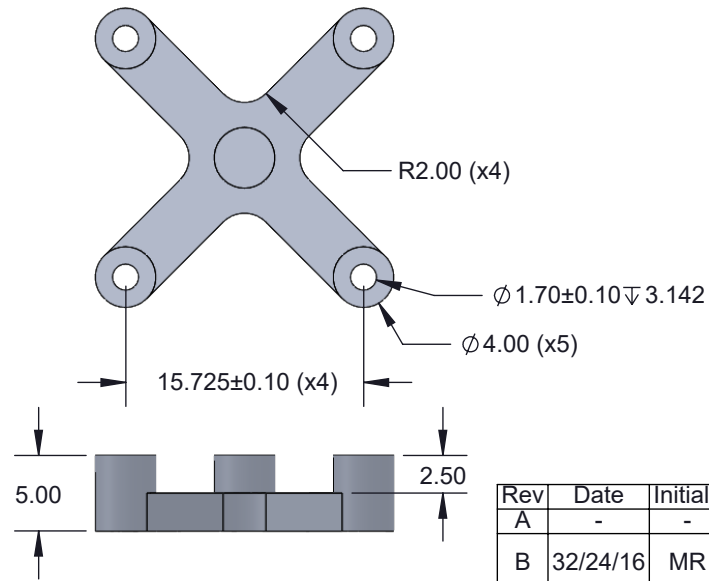
Primary dimension units are millimeters, Secondary dimension units are [inches], Weight is in grams.

Tolerances: Hole diameters $\pm 0.03\text{mm}$ [$\pm 0.001"$], Pitches (from true position) $\pm 0.025\text{mm}$ [$\pm 0.001"$], substrate thickness tolerance $\pm 10\%$, all other tolerances $\pm 0.13\text{mm}$ [$\pm 0.005"$] unless stated otherwise. Materials and specifications are subject to change without notice.

 <p>CBT-LGA-5007 Drawing Ironwood Electronics, Inc. Tele: (800) 404-0204 www.ironwoodelectronics.com</p>	<p>Material: N/A Finish: N/A Weight: 65.16</p>	<p>STATUS: Released ENG: S. Huang FILE: CBT-LGA-5007 Dwg</p>	<p>SHEET: 3 OF 4 DRAWN BY: M. Raske DATE: 01/30/2014</p>	<p>REV. B SCALE: 4.5:1</p>



ITEM NO.	DESCRIPTION	Material
1	CBT Socket Base 13mm	7075-T6 Aluminum Alloy
2	Clam shell lid for 17mm IC	7075-T6 Aluminum Alloy
3	Compression Plate 11.5x13mm	7075-T6 Alumium Alloy
4	M10 Comression Screw	7075-T6 Aluminum Alloy
5	IC Guide 11.5x13mm	Kapton Polyimide/Cirlex
6	Top pin guide 11.5x13mm 0.5mm pitch 10x20 array	Semitron MDS 100
7	Bottom Pin Guide 11.5x13mm 0.5mm pitch 10x20 array	Semitron MDS 100
8	13x13mm Clamshell Backing Plate	7075-T6 Aluminum Alloy
9	IC, BGA162 0.5mm pitch 111.5x13mm 10x20 array without solder ball	High Temp FR4
10	PCB 11.5x13mm 0.5mm pitch 10x20 array	High Temp FR4
11	Stamped Pin, 0.4mm SBT-LGA/QFN	N/A
12	#0-80, 90 deg., head pin guide screw, Peek material	PEEK unfilled
13	#0-80 x 0.5, SH Cap Screw	18-8 Stainless Steel
14	Dowel pin, 1/32" X 1/4", SS	Stainless Steel (18-8)
15	Screw, M3 x 12mm, Low Head Cap, SS	18-8 Stainless Steel
16	Clamshell Latch	7075-T6 Aluminum Alloy
17	Hinge Pin and Snap Ring, 3mm OD, 25mm long, SS	Stainless Steel (ferritic)
18	Spring Clamshell lid assembly	Steel Music Wire
19	Precision Compression Spring, Zinc-Plated Music Wire, 1/2" Length, .12" OD, .016" Wire	Zinc Plated Music Wire
20	Insulating washer, 4mm OD.	Kapton Polyimide/Cirlex




Description: Skt comp

Primary dimension units are millimeters, Secondary dimension units are [inches], Weight is in grams.

Tolerances: Hole diameters $\pm 0.03\text{mm}$ [$\pm 0.001"$], Pitches (from true position) $\pm 0.025\text{mm}$ [$\pm 0.001"$], substrate thickness tolerance $\pm 10\%$, all other tolerances $\pm 0.13\text{mm}$ [$\pm 0.005"$] unless stated otherwise. Materials and specifications are subject to change without notice.

Rev	Date	Initials	Description
A	-	-	Original
B	32/24/16	MR	Replaced plastic screws with peek screws

CBT-LGA-5007 Drawing  Ironwood Electronics, Inc. Tele: (800) 404-0204 www.ironwoodelectronics.com	Material: N/A Finish: N/A Weight: 65.16	STATUS: Released ENG: S. Huang FILE: CBT-LGA-5007 Dwg	SHEET: 4 OF 4 DRAWN BY: M. Raske DATE: 01/30/2014	REV. B SCALE: 1.8:1
---	---	---	---	------------------------