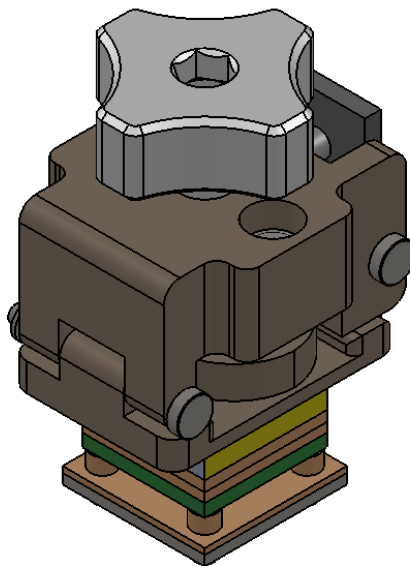
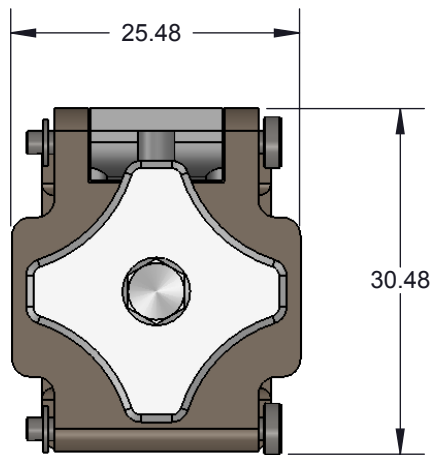
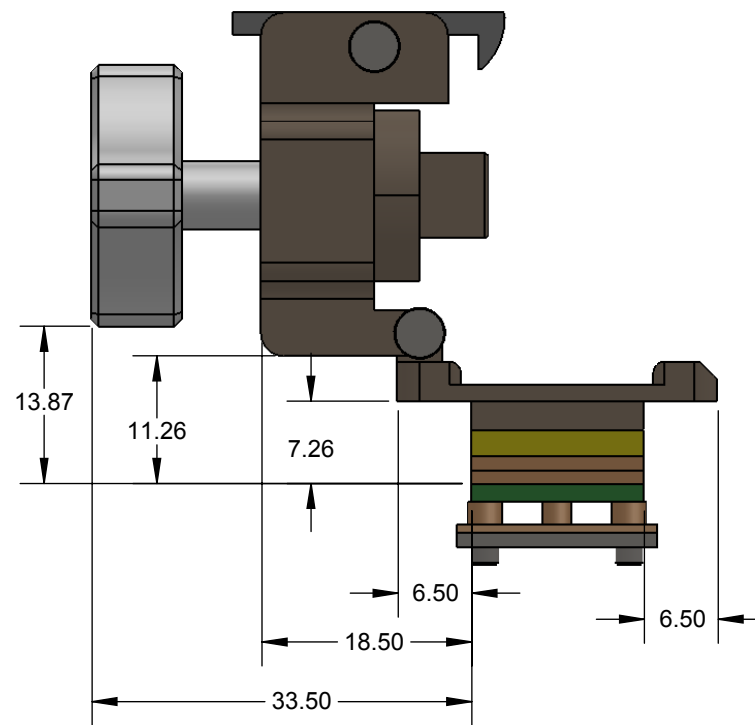
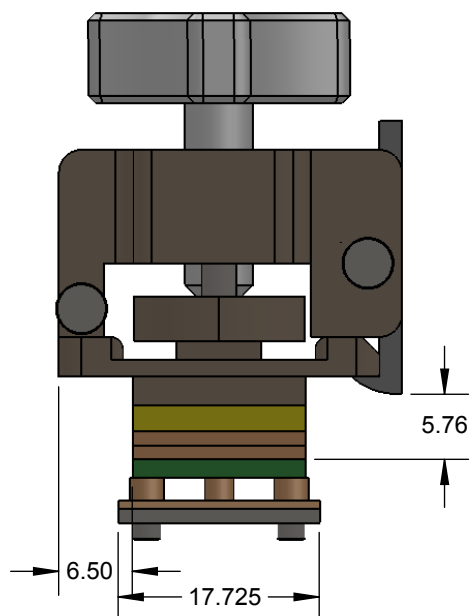
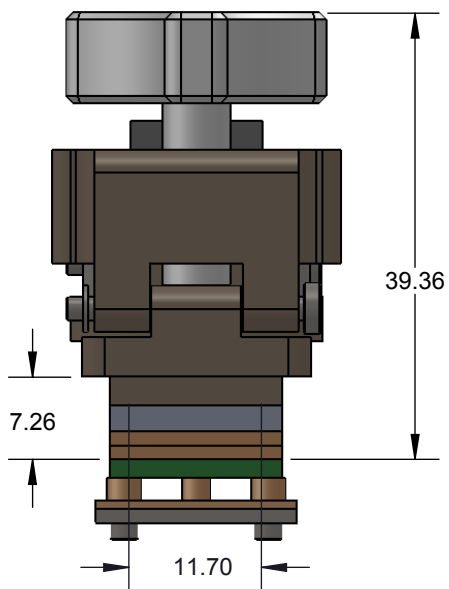


CBT DIRECT MOUNT, SOLDERLESS SOCKET FOR BURN-IN AND TEST APPLICATIONS



Features


- Wide temperature range (-55C to +155C).
- High current capability (up to 2.2A).
- Excellent signal integrity at high frequencies.
- Low and stable contact resistance for reliable production yield.
- Highly compliant to accommodate wide co-planarity variations.
- Automated probe manufacturing enables low cost and short lead time.

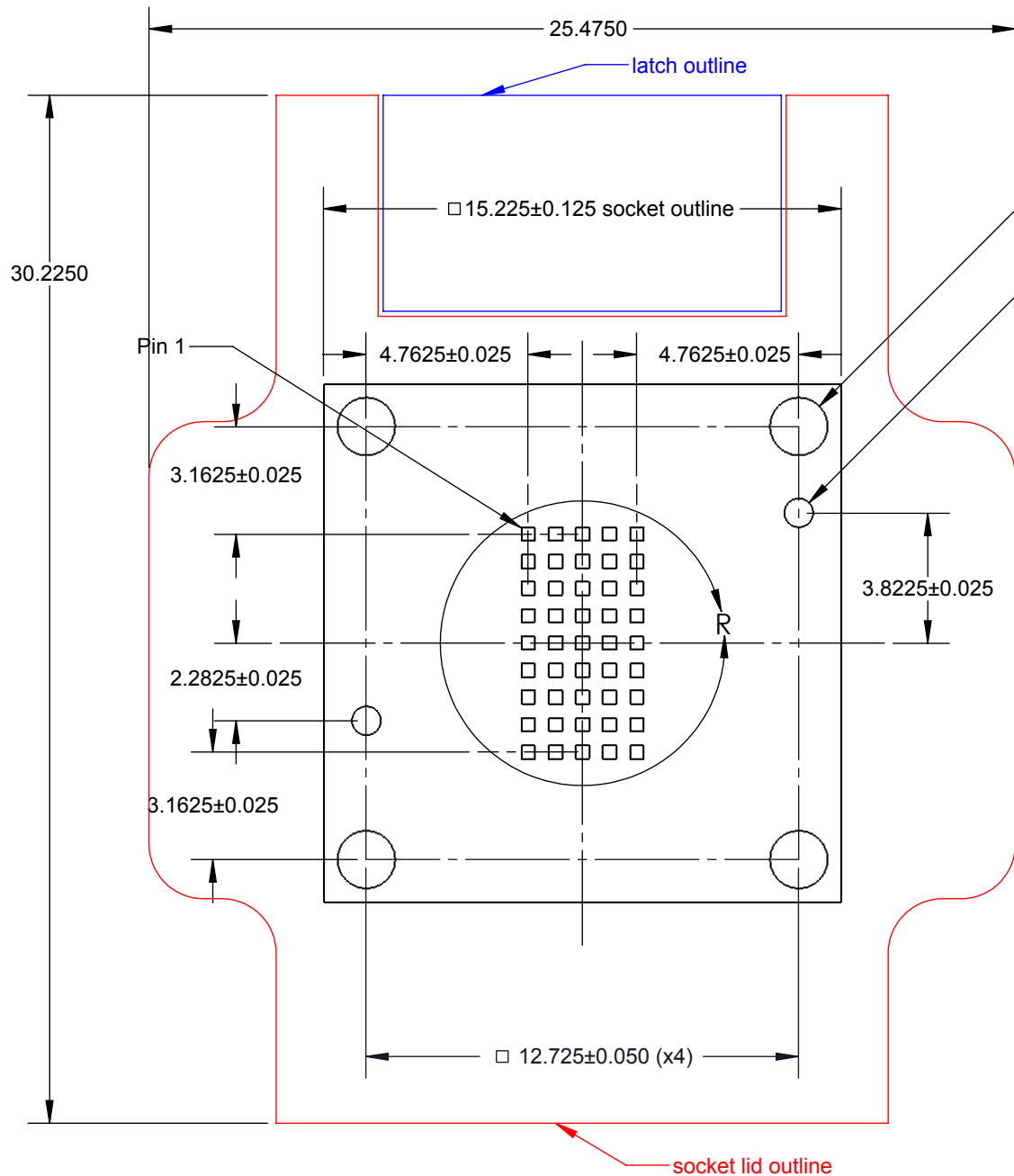


Description: CBT socket for 4.3x7.6mm 0.8mmpitch LGA45

Primary dimension units are millimeters, Secondary dimension units are [inches], Weight is in grams.

Tolerances: Hole diameters $\pm 0.03\text{mm}$ [$\pm 0.001"$], Pitches (from true position) $\pm 0.025\text{mm}$ [$\pm 0.001"$], substrate thickness tolerance $\pm 10\%$, all other tolerances $\pm 0.13\text{mm}$ [$\pm 0.005"$] unless stated otherwise. Materials and specifications are subject to change without notice.

 CBT-LGA-5008 Drawing Ironwood Electronics, Inc. Tele: (800) 404-0204 www.ironwoodelectronics.com	Material: N/A Finish: N/A Weight: 42.67	STATUS: Released ENG: E. Smolentseva FILE: CBT-LGA-5008 Dwg	SHEET: 1 OF 4 DRAWN BY: M. Raske DATE: 04/16/2014	REV. A SCALE: 3:2
---	---	---	---	----------------------



Target PCB Recommendations

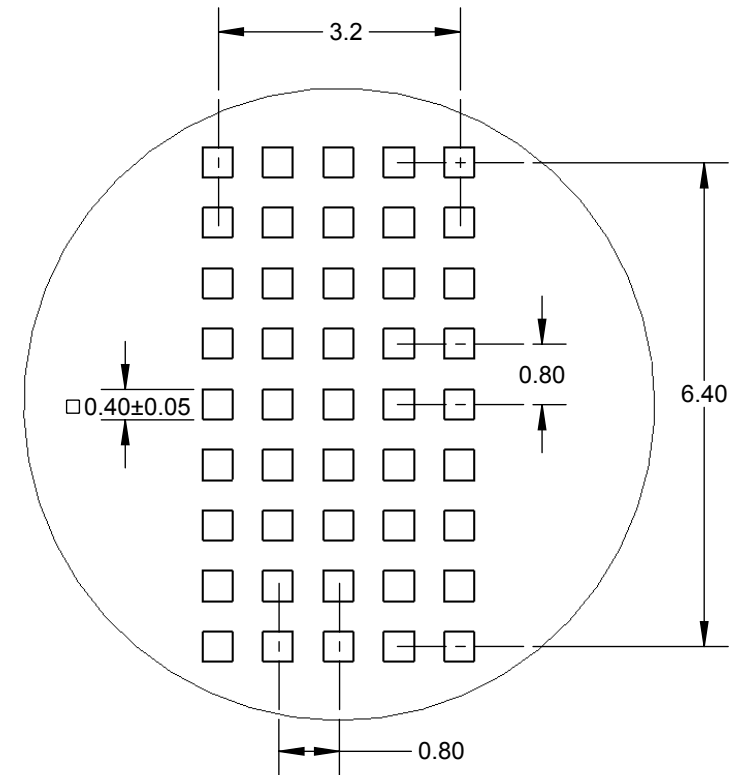
Total thickness: 1.6mm min.

Plating: Gold or Solder finish

PCB Pad height: Same or higher than solder mask

∅ 1.70±0.10 (x4)
non plated mounting holes

∅ 0.85±0.025 (x2)
non plated alignment holes




DETAIL R
SCALE 10 : 1

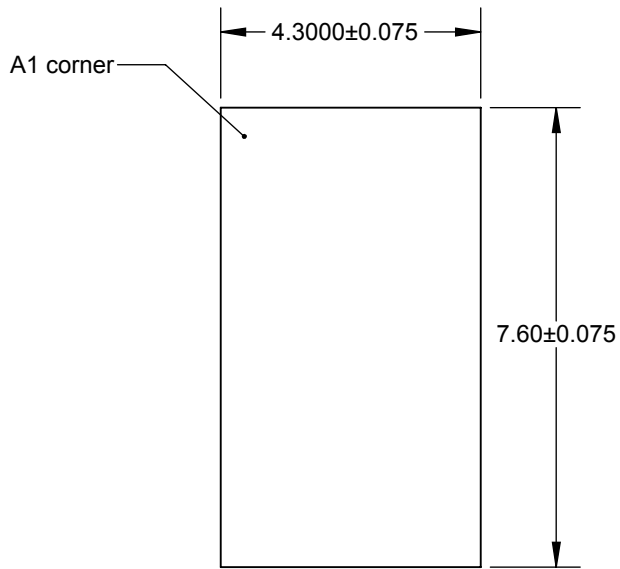
Description: Recommended PCB Layout

Primary dimension units are millimeters, Secondary dimension units are [inches], Weight is in grams.

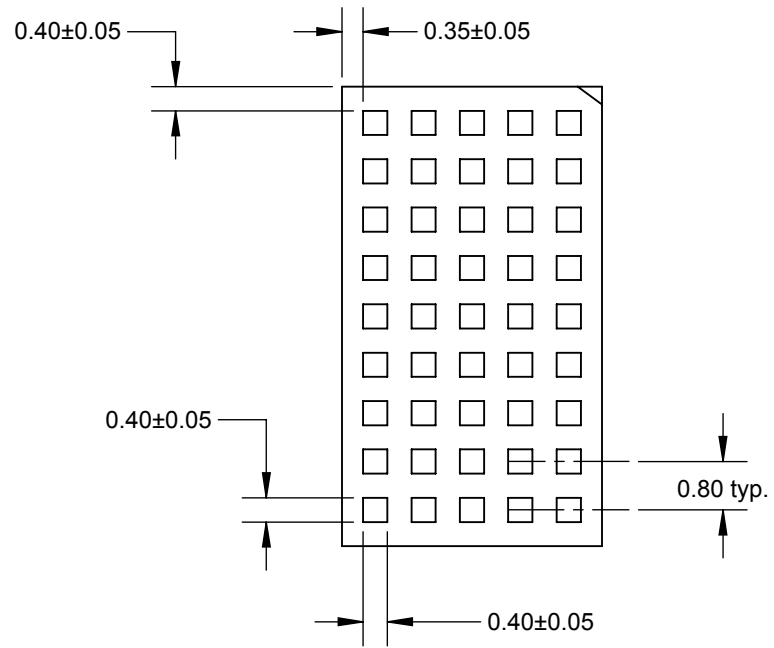
Tolerances: Hole diameters ±0.03mm [±0.001"], Pitches (from true position) ±0.025mm [±0.001"], substrate thickness tolerance ±10%, all other tolerances ±0.13mm [±0.005"] unless stated otherwise. Materials and specifications are subject to change without notice.

 <p>CBT-LGA-5008 Drawing Ironwood Electronics, Inc. Tele: (800) 404-0204 www.ironwoodelectronics.com</p>	<p>Material: N/A Finish: N/A Weight: 42.67</p>	<p>STATUS: Released ENG: E. Smolentseva FILE: CBT-LGA-5008 Dwg</p>	<p>SHEET: 2 OF 4 DRAWN BY: M. Raske DATE: 04/16/2014</p>	<p>REV. A SCALE: 5:1</p>

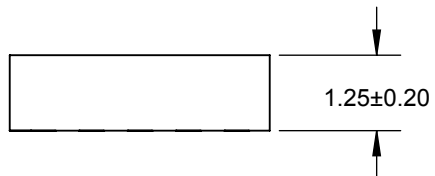
Ironwood Package Code LGA45A



Top view



Bottom view




Side View

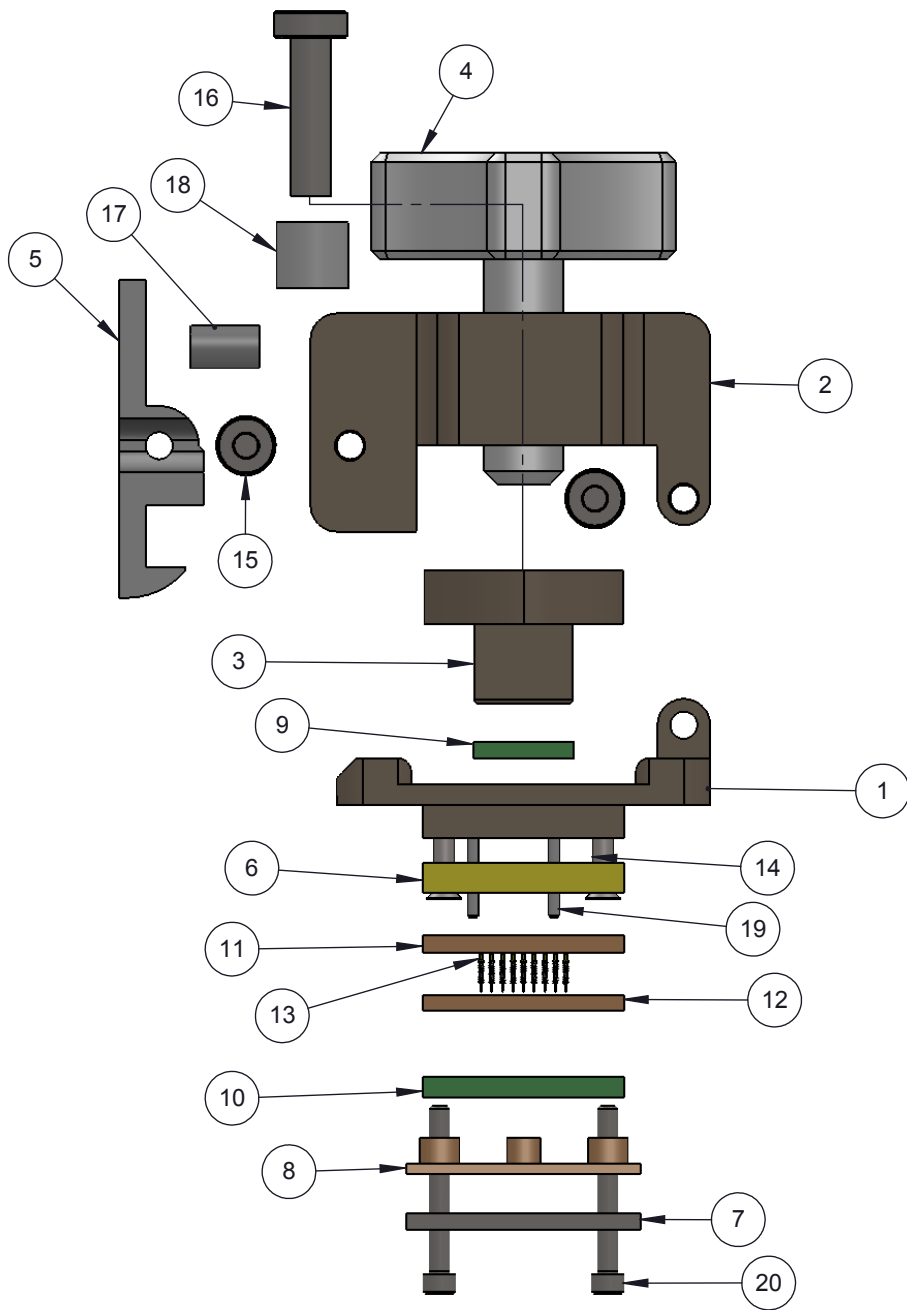
Description: Compatible QFN

Primary dimension units are millimeters, Secondary dimension units are [inches], Weight is in grams.

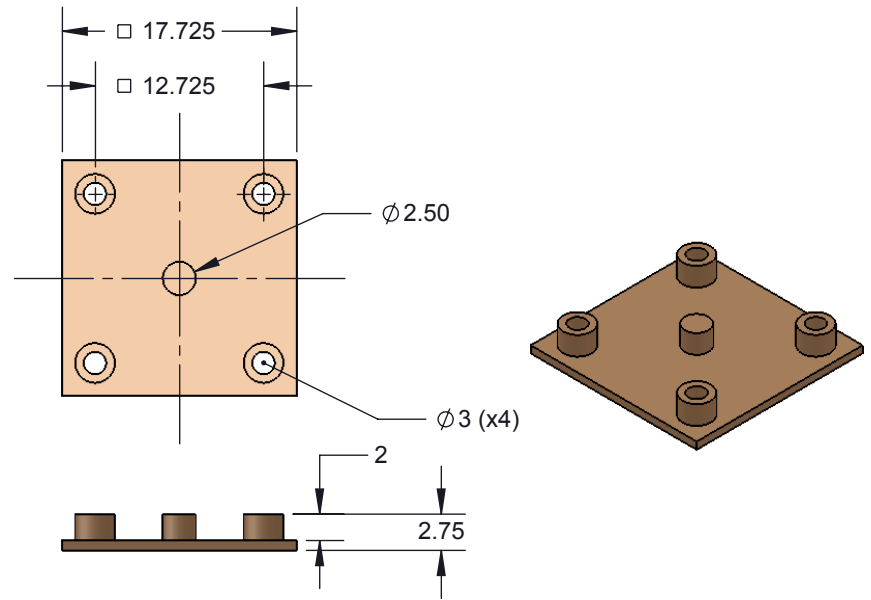
Tolerances: Hole diameters ± 0.03 mm [± 0.001 "], Pitches (from true position) ± 0.025 mm [± 0.001 "], substrate thickness tolerance $\pm 10\%$, all other tolerances ± 0.13 mm [± 0.005 " unless stated otherwise. Materials and specifications are subject to change without notice.

Rev	Date	Initials	Description
A	12/16/13	ELS	Original

 CBT-LGA-5008 Drawing Ironwood Electronics, Inc. Tele: (800) 404-0204 www.ironwoodelectronics.com	Material: N/A Finish: N/A Weight: 42.67	STATUS: Released	SHEET: 3 OF 4	REV. A
		ENG: E. Smolentseva	DRAWN BY: M. Raske	SCALE: 8:1
		FILE: CBT-LGA-5008 Dwg	DATE: 04/16/2014	



ITEM NO.	DESCRIPTION	Material
1	CBT Socket Base 10mm	7075-T6 Aluminum Alloy
2	Clam Shell Socket Lid 10mm IC	7075-T6 Aluminum Alloy
3	CBT Compression Plate 4.3x7.6mmmm IC	7075-T6 Aluminum Alloy
4	M6x1 fluted knob compression screw, Ni plated	7075-T6 Aluminum Alloy
5	Latch 6- 10mm Ni plated	7075-T6 Aluminum Alloy
6	IC Guide for 4.3x7.6mm device	Torlon 4203
7	Backing Plate 10mm IC 1.25mm thick, Stainless Steel	Stainless Steel (ferritic)
8	Insulation Plate	Ultem 1000
9	Customer's device	FR4 Standard
10	Customer's target PCB	FR4 Standard
11	Top pin guide 7.6x4.3 0.8mm pitch	Semitron MDS 100
12	Bottom Pin Guide 7.6x4.3 0.8mm pitch	Semitron MDS 100
13	SBT-LGA/QFN Pogo Pin, 0.5mm-0.8mm	Contact Mtrl: BeCu, Au Plated over Ni
14	#0-80X0.25", 90 deg., head pin guide screw, Peek material	PEEK unfilled
15	Hinge Pin and Snap Ring, 2mm OD, 19mm long, SS	Stainless Steel (ferritic)
16	Screw, M3 x 12mm, Low Head Cap, SS	18-8 Stainless Steel
17	Precision Compression Spring, Zinc-Plated Music Wire, 1/2" Length, .12" OD, .016" Wire	Zinc Plated Music Wire
18	Spring Clamshell lid assembly	Steel Music Wire
19	Dowel Pin, 1/32" x 3/8", SS	Chrome Stainless Steel
20	#0-80 x 0.5, SH Cap Screw	Alloy Steel




Description: Socket Assy, detail

Primary dimension units are millimeters, Secondary dimension units are [inches], Weight is in grams.

Tolerances: Hole diameters $\pm 0.03\text{mm}$ [$\pm 0.001"$], Pitches (from true position) $\pm 0.025\text{mm}$ [$\pm 0.001"$], substrate thickness tolerance $\pm 10\%$, all other tolerances $\pm 0.13\text{mm}$ [$\pm 0.005"$] unless stated otherwise. Materials and specifications are subject to change without notice.

Insulation plate specification

 CBT-LGA-5008 Drawing Ironwood Electronics, Inc. Tele: (800) 404-0204 www.ironwoodelectronics.com	Material: N/A Finish: N/A Weight: 42.67	STATUS: Released ENG: E. Smolentseva FILE: CBT-LGA-5008 Dwg	SHEET: 4 OF 4 DRAWN BY: M. Raske DATE: 04/16/2014	REV. A SCALE: 3.5:2