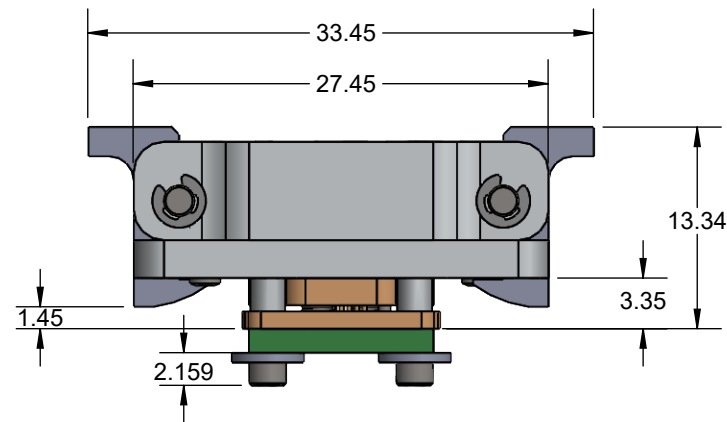
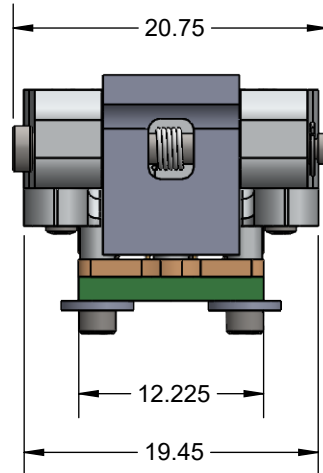
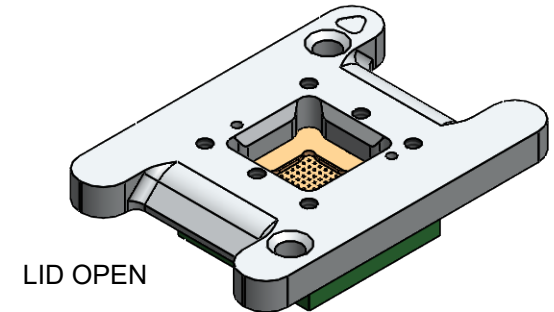
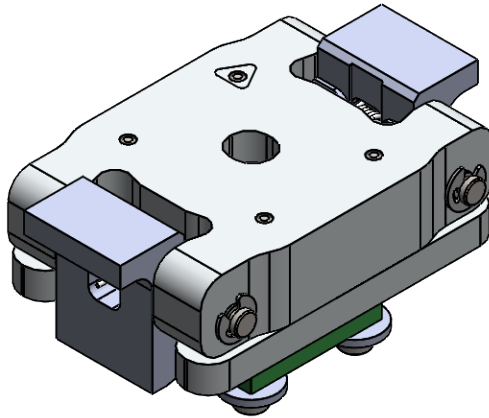


CBT-LGA DIRECT MOUNT, SOLDERLESS SOCKET FOR BURN-IN AND TEST APPLICATIONS


FEATURES:

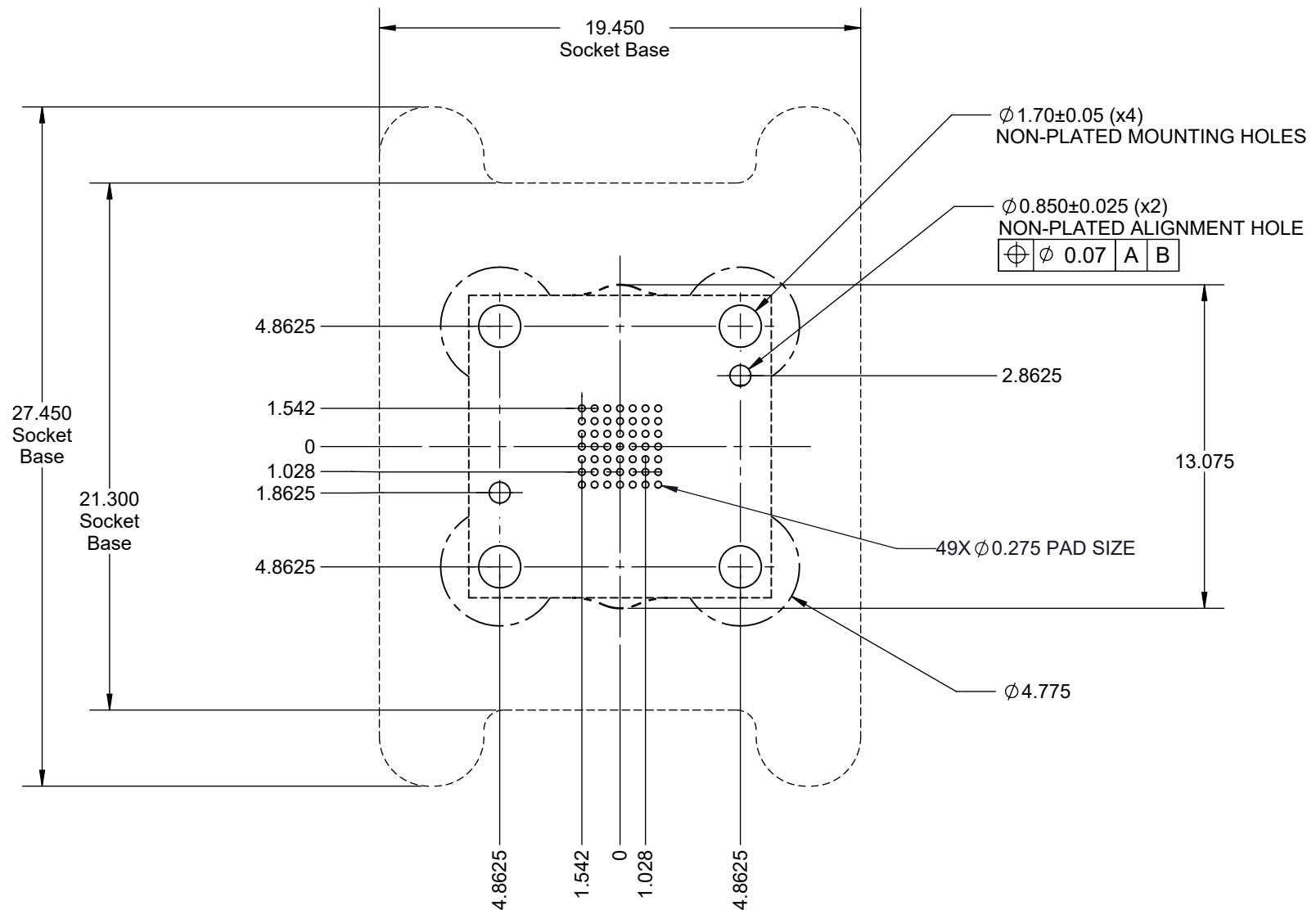
Wide temperature range (-55C to +180C)
High current capability (up to 4A)
Excellent signal integrity at high frequencies
Low and stable contact resistance for reliable production yield
Highly compliant to accommodate wide co-planarity variations
Automated probe manufacturing enables low cost and short lead time



Description: Socket Specification


Primary dimension units are millimeters, Secondary dimension units are [inches], Weight is in grams.
Tolerances: Hole diameters $\pm 0.0254\text{mm}$ [± 0.001 "], Pitches (from true position) $\pm 0.0254\text{mm}$ [± 0.001 "],
substrate thickness tolerance $\pm 10\%$, all other tolerances $\pm 0.127\text{mm}$ [± 0.005 "]
unless stated otherwise. Materials and specifications are subject to change without notice.

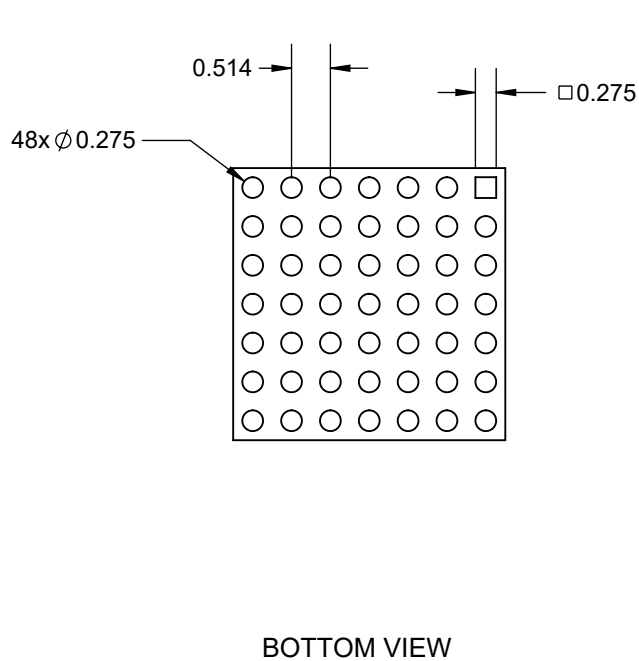
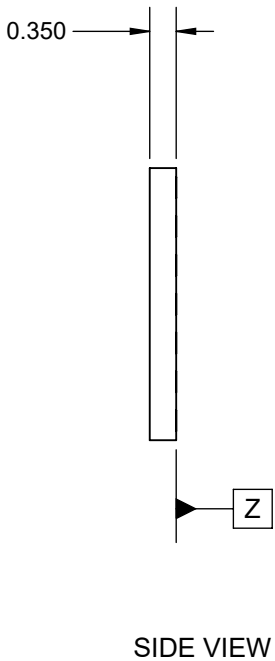
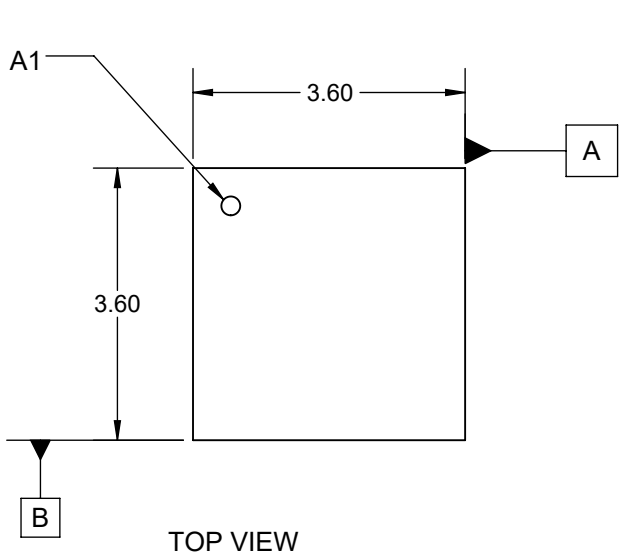
CBT-LGA-5015 Drawing  ©2017 Ironwood Electronics, Inc. Tele: (800) 404-0204 www.ironwoodelectronics.com	Material: N/A Finish: N/A Weight: 13.95	STATUS: Released	SHEET: 1 OF 4	REV. A
		ENG: J. Vavra	DRAWN BY: M. Raske	SCALE: 2:1
		FILE: CBT-LGA-5015 Dwg	DATE: 03/27/2018	



Description: Recommended PCB Layout

Primary dimension units are millimeters, Secondary dimension units are [inches], Weight is in grams.
Tolerances: Hole diameters $\pm 0.0254\text{mm}$ [$\pm 0.001"$], Pitches (from true position) $\pm 0.0254\text{mm}$ [$\pm 0.001"$],
substrate thickness tolerance $\pm 10\%$, all other tolerances $\pm 0.127\text{mm}$ [$\pm 0.005"$]
unless stated otherwise. Materials and specifications are subject to change without notice.


	CBT-LGA-5015 Drawing ©2017 Ironwood Electronics, Inc. Tele: (800) 404-0204 www.ironwoodelectronics.com	Material: N/A Finish: N/A Weight: 13.95	STATUS: Released	SHEET: 2 OF 4	REV. A
			ENG: J. Vavra	DRAWN BY: M. Raske	SCALE: 4:1
			FILE: CBT-LGA-5015 Dwg	DATE: 03/27/2018	

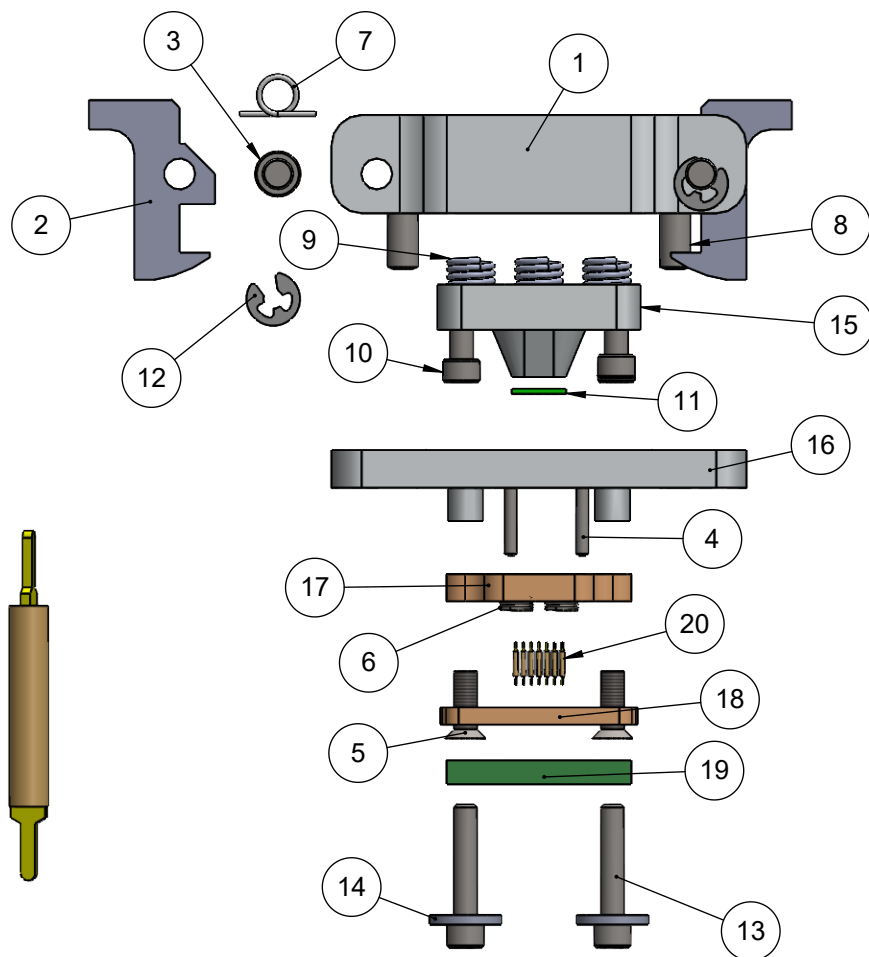


1. Dimensions are in millimeters.
2. Interpret dimensions and tolerances per ASME Y14.5M-1994.
3. Dimension b is measured at the maximum solder ball diameter, parallel to datum plane Z.
4. Datum Z (seating plane) is defined by the spherical crowns of the solder balls.
5. Parallelism measurement shall exclude any effect of mark on top surface of package.

Description: Compatible LGA

Primary dimension units are millimeters, Secondary dimension units are [inches], Weight is in grams.
Tolerances: Hole diameters $\pm 0.0254\text{mm}$ [$\pm 0.001"$], Pitches (from true position) $\pm 0.0254\text{mm}$ [$\pm 0.001"$],
substrate thickness tolerance $\pm 10\%$, all other tolerances $\pm 0.127\text{mm}$ [$\pm 0.005"$]
unless stated otherwise. Materials and specifications are subject to change without notice.

	CBT-LGA-5015 Drawing ©2017 Ironwood Electronics, Inc. Tele: (800) 404-0204 www.ironwoodelectronics.com	Material: N/A Finish: N/A Weight: 13.95	STATUS: Released	SHEET: 3 OF 4	REV. A
			ENG: J. Vavra	DRAWN BY: M. Raske	SCALE: 10:1
			FILE: CBT-LGA-5015 Dwg	DATE: 03/27/2018	




SCALE 16 : 1

PIN
DETAIL

Description: Socket Assy, Insulation Plate

Primary dimension units are millimeters, Secondary dimension units are [inches], Weight is in grams.
Tolerances: Hole diameters $\pm 0.0254\text{mm}$ [$\pm 0.001"$], Pitches (from true position) $\pm 0.0254\text{mm}$ [$\pm 0.001"$],
substrate thickness tolerance $\pm 10\%$, all other tolerances $\pm 0.127\text{mm}$ [$\pm 0.005"$]
unless stated otherwise. Materials and specifications are subject to change without notice.

ITEM NO.	DESCRIPTION	QTY.
1	Double latch open top socket lid for 5.6 x8.3mm, 8x12 array 0.65mm pitch BGA96M	1
2	Clamshell Latch Snap type 9mm wide	2
3	2mm diameter Hinge Pin, 20 mm long	2
4	Dowel pin, 1/32" X 1/4", SS	2
5	#0-80, 90 deg., head pin guide screw, Peek material	2
6	Floating Guide Spring	2
7	Torsion Spring, 180 0.109" OD, Ccw/Rh	2
8	M2 Dowel Pin 4mm SS	2
9	Zinc-Plated Steel precision compression spring 125"OD 0.25" length 0.016" wire diameter	4
10	Socket Head cap Screw, 0-80, 3/16" lg	4
11	Tchip for 3.6x3.6mm, 7x7 array 0.514mm pitch LGA49A	1
12	Snap ring for 2mm Hinge pin 0.15" OD	2
13	#0-80 X .313 LG, SOC HD CAP SCREW, ALLOY STL, BLK OXIDE	4
14	Washer, #0 x .025", Nylon	4
15	Compression plate for for 3.6x3.6mm device	1
16	CBT double latch socket base for 7mm IC LGA/QFN	1
17	Top Pin Guide for 3.6x3.6mm, 7x7 array 0.514mm pitch LGA49A	1
18	Bot Pin Guide for 3.6x3.6mm, 7x7 array 0.514mm pitch LGA49A	1
19	TPCB for 3.6x3.6mm, 7x7 array 0.514mm pitch LGA49A	1
20	Stamped Pin, 0.4mm SBT-LGA/QFN	49

CBT-LGA-5015 Drawing		STATUS: Released	SHEET: 4 OF 4	REV. A
 ©2017 Ironwood Electronics, Inc. Tele: (800) 404-0204 www.ironwoodelectronics.com	Material: N/A Finish: N/A Weight: 13.95	ENG: J. Vavra	DRAWN BY: M. Raske	SCALE: 2:1
		FILE: CBT-LGA-5015 Dwg	DATE: 03/27/2018	