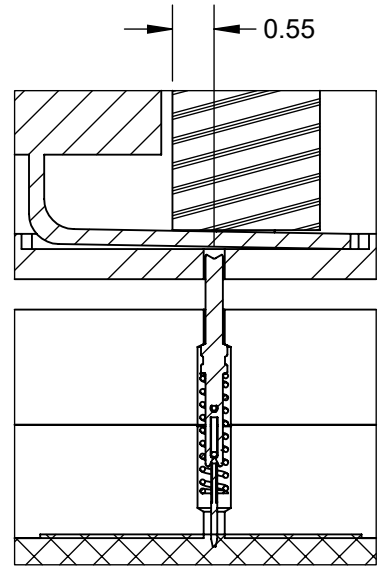
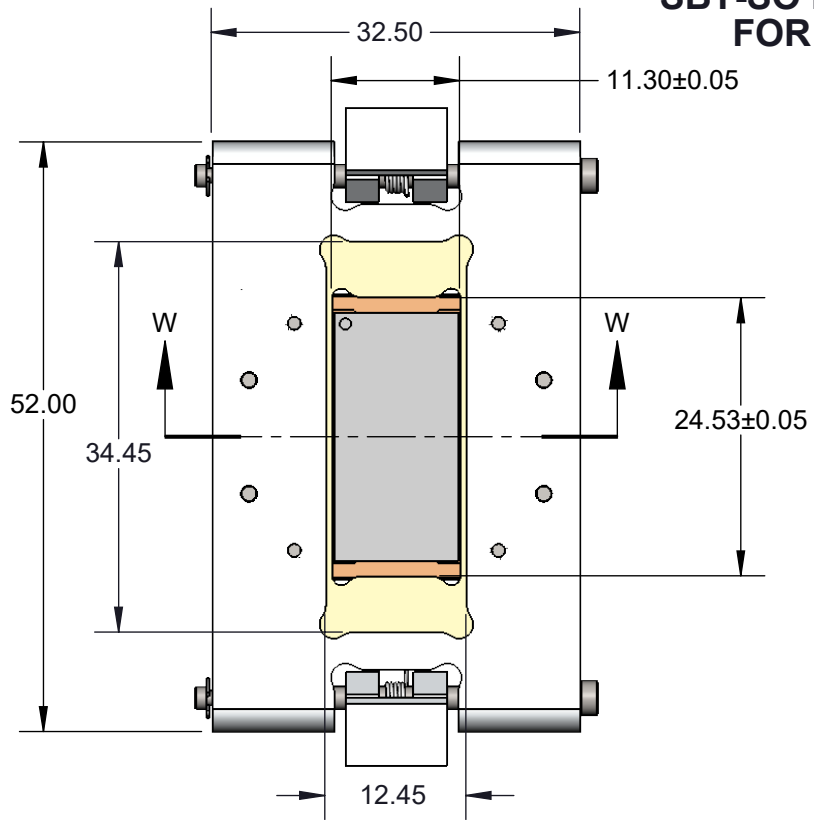
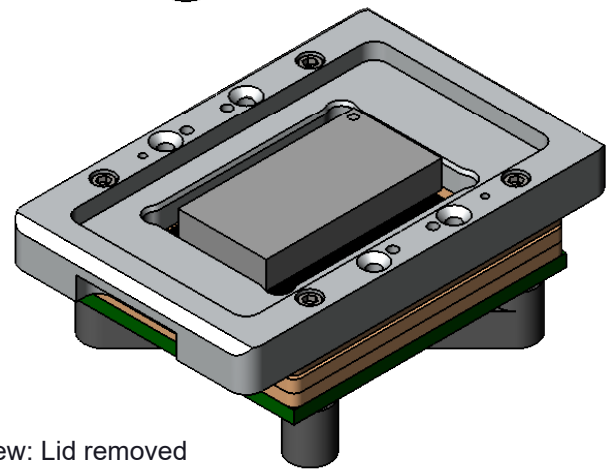
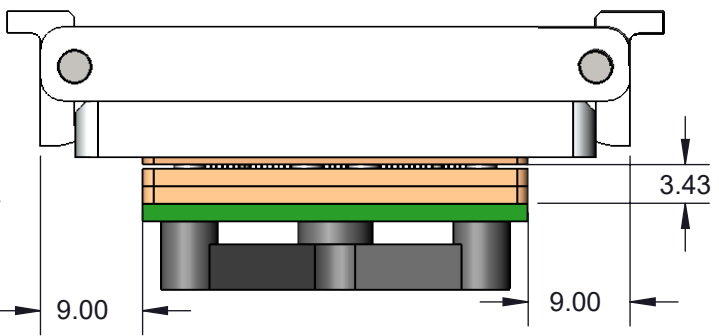
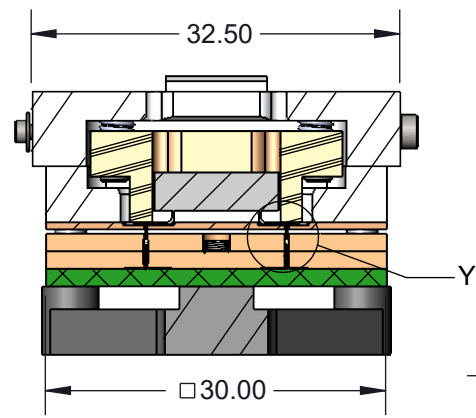
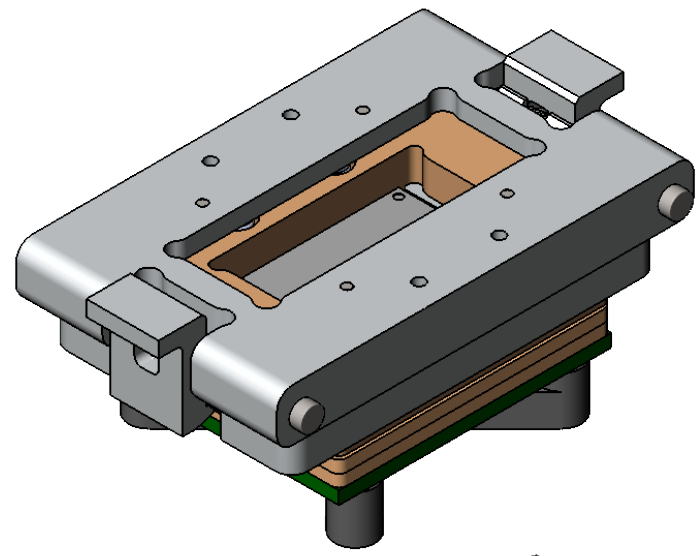


SBT-SO DIRECT MOUNT, SOLDERLESS SOCKET FOR BURN-IN AND TEST APPLICATIONS



DETAIL Y
SCALE 10 : 1

- Wide temperature range (-55C to +180C).
- High current capability (up to 4A).
- Excellent signal integrity at high frequencies.
- Low and stable contact resistance for reliable production yield.
- Highly compliant to accommodate wide co-planarity variations.
- Automated probe manufacturing enables low cost and short lead time.




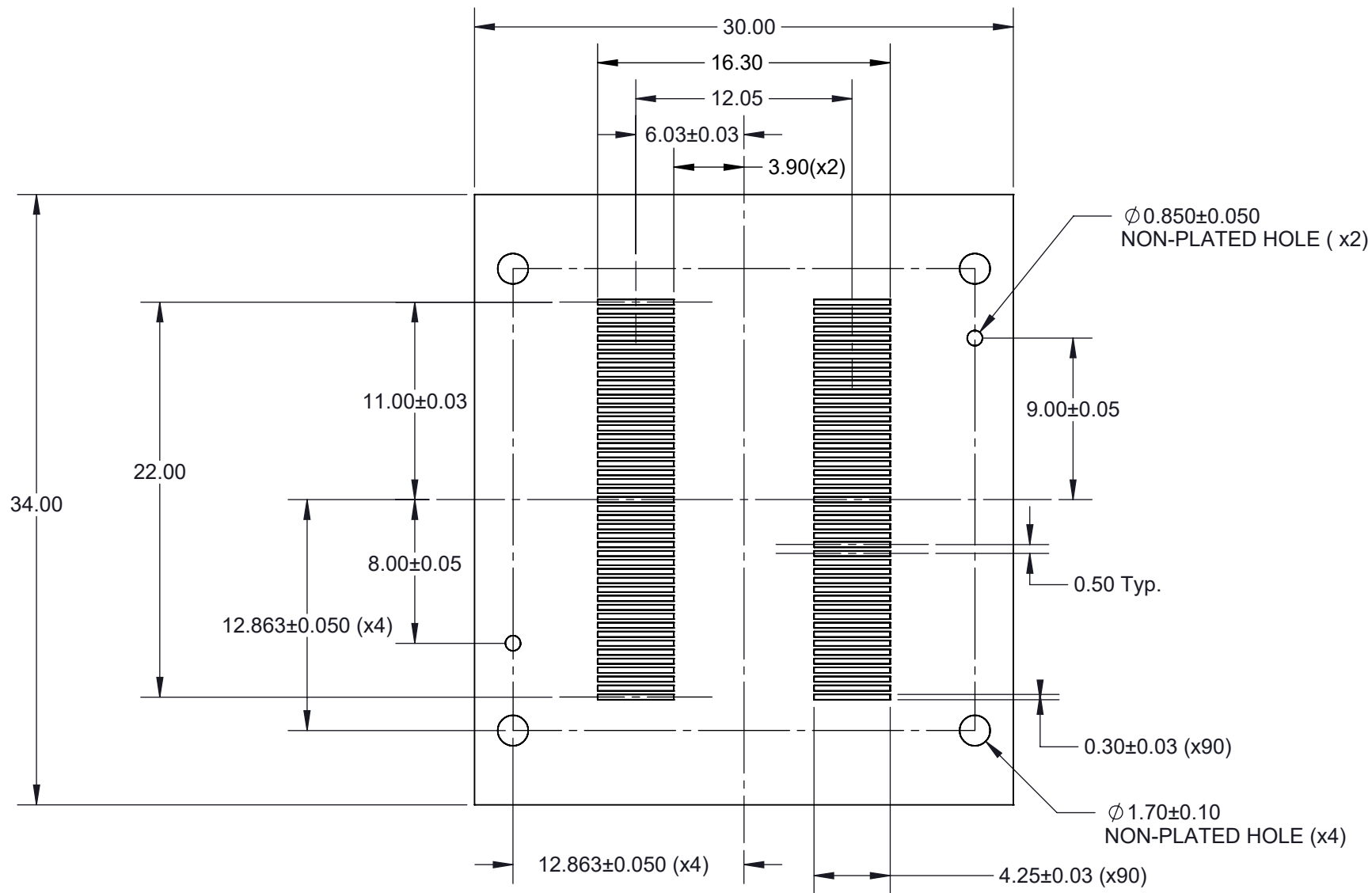
ISO view: Lid removed

SECTION W-W

Description: SBT-SOP90 11x21.9mm 0.5mm pitch

Primary dimension units are millimeters, Secondary dimension units are [inches], Weight is in grams.
Tolerances: Hole diameters $\pm 0.03\text{mm}$ [$\pm 0.001"$], Pitches (from true position) $\pm 0.025\text{mm}$ [$\pm 0.001"$], substrate thickness tolerance $\pm 10\%$, all other tolerances $\pm 0.13\text{mm}$ [$\pm 0.005"$] unless stated otherwise. Materials and specifications are subject to change without notice.

 CBT-SO-4003 Drawing Ironwood Electronics, Inc. Tele: (800) 404-0204 www.ironwoodelectronics.com	Material: Material <not specified> Finish: Weight: 47.04	STATUS: Released ENG: V. Panavala FILE: CBT-SO-4003 Dwg	SHEET: 1 OF 5 DRAWN BY: M. Raske DATE: 2/23/2016	REV. A SCALE: 3:2



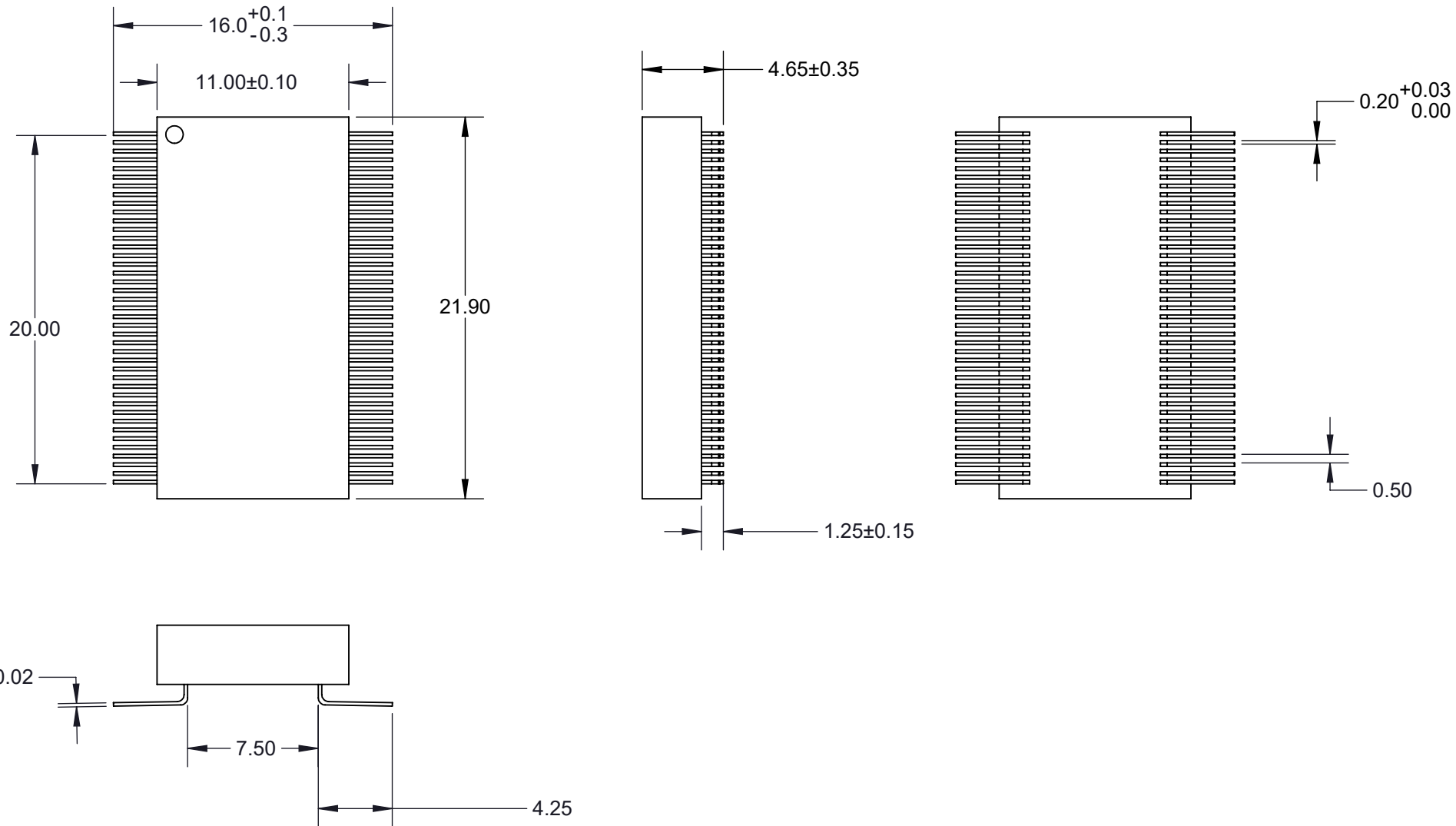
Target PCB Recommendations
 Total thickness: 1.6mm min.
 Plating: Gold or Solder finish
 PCB Pad height: Same or higher than solder mask

Description: Recommended PCB Layout

Primary dimension units are millimeters, Secondary dimension units are [inches], Weight is in grams.

Tolerances: Hole diameters $\pm 0.03\text{mm}$ [$\pm 0.001"$], Pitches (from true position) $\pm 0.025\text{mm}$ [$\pm 0.001"$], substrate thickness tolerance $\pm 10\%$, all other tolerances $\pm 0.13\text{mm}$ [$\pm 0.005"$] unless stated otherwise. Materials and specifications are subject to change without notice.

 CBT-SO-4003 Drawing Ironwood Electronics, Inc. Tele: (800) 404-0204 www.ironwoodelectronics.com	Material: Material <not specified> Finish: Weight: 47.04	STATUS: Released	SHEET: 2 OF 5	REV. A
		ENG: V. Panavala	DRAWN BY: M. Raske	SCALE: 3:1
		FILE: CBT-SO-4003 Dwg	DATE: 2/23/2016	




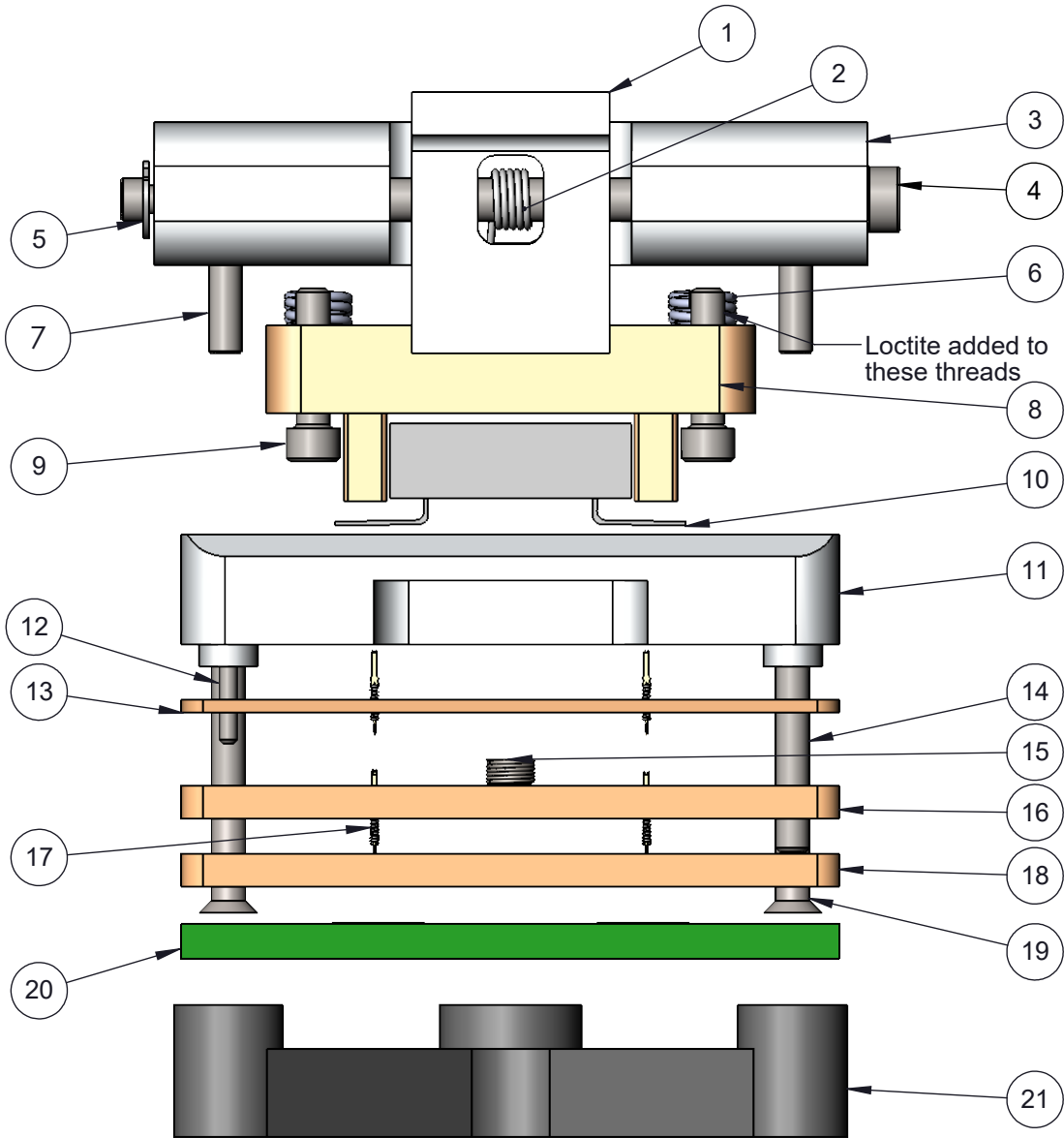
1. Dimensions are in millimeters.
2. Interpret dimensions and tolerances per ASME Y14.5M-1994.

Description: Compatible SO package

Primary dimension units are millimeters, Secondary dimension units are [inches], Weight is in grams.

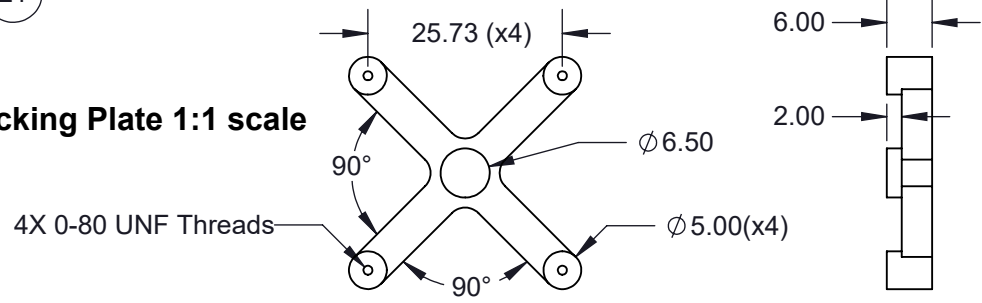
Tolerances: Hole diameters $\pm 0.03\text{mm}$ [± 0.001 "], Pitches (from true position) $\pm 0.025\text{mm}$ [± 0.001 "], substrate thickness tolerance $\pm 10\%$, all other tolerances $\pm 0.13\text{mm}$ [± 0.005 "] unless stated otherwise. Materials and specifications are subject to change without notice.

 CBT-SO-4003 Drawing Ironwood Electronics, Inc. Tele: (800) 404-0204 www.ironwoodelectronics.com	Material: Material <not specified> Finish: Weight: 47.04	STATUS: Released	SHEET: 3 OF 5	REV. A
		ENG: V. Panavala	DRAWN BY: M. Raske	SCALE: 3:1
		FILE: CBT-SO-4003 Dwg	DATE: 2/23/2016	




ITEM NO.	Description	Material
1	Clamshell Latch Snap type 9mm wide	7075-T6 Alumium Alloy
2	Coil Spring, 180 0.109" OD, SS	Stainless Steel (302)
3	Clamshell Socket Lid SOIC socket	7075-T6 Alumium Alloy
4	Hinge Pin, M2 X 32.5mm LG, 18-8 SS	AISI 347 Annealed Stainless Steel (SS)
5	Snap ring for 2mm Hinge pin 0.15" OD	
6	302SS Comp. Spring .375" Length, .125" OD, .016" Wire Dia.	Material <not specified>
7	Dowel Pin, M1.5 X 5mm LG, Hardened Steel	AISI 347 Annealed Stainless Steel (SS)
8	Compression plate SOP90 0.5mm pitch	PEEK Ceramic filled (No exceptions)
9	#0-80 X .25 LG, SOC HD CAP SCREW, ALLOY STL, BLK OXIDE	Alloy Steel
10	SOP82/90 0.5mm pitch IC	
11	SBT socket Base SOP90	7075-T6 Alumium Alloy
12	Dowel pin, 1/32" X 1/4", SS	Stainless Steel (18-8)
13	floating guide SOP90 0.5mm pitch	Semitron MDS 100
14	#0-80 x 0.5, SH Cap Screw	Alloy Steel
15	Floating Guide Spring	Alloy Steel (SS)
16	Top guide SOP90 0.5mm pitch	Semitron MDS 100
17	SBT Pin, SBT-BGA 0.5mm-0.8mm	
18	Bottom Guide, SOP90 0.5mm pitch	Semitron MDS 100
19	#0-80, 90 deg., head pin guide screw, Peek material 5.5715mm overall Length	PEEK unfilled
20	PCB SOP90 0.5 pitch	High Temp FR4
21	Backing Plate	7075-T6 Alumium Alloy

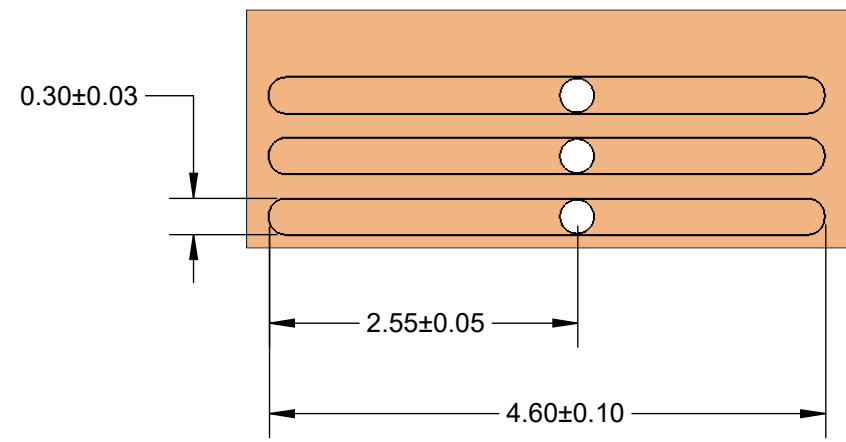
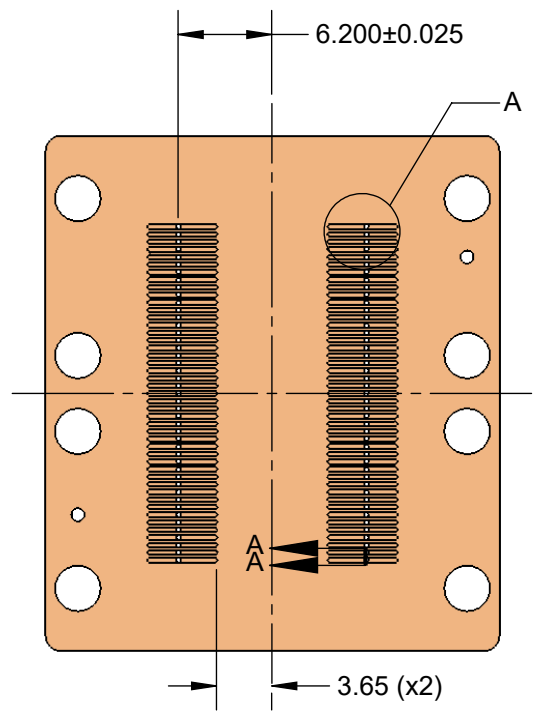
Backing Plate 1:1 scale



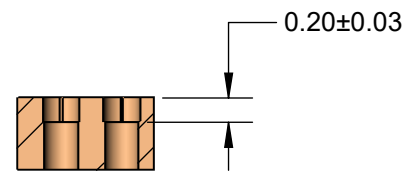
Description: Socket Spec

Primary dimension units are millimeters, Secondary dimension units are [inches], Weight is in grams.
 Tolerances: Hole diameters ±0.03mm [±0.001"], Pitches (from true position) ±0.025mm [±0.001"], substrate thickness tolerance ±10%, all other tolerances ±0.13mm [±0.005"] unless stated otherwise. Materials and specifications are subject to change without notice.

 CBT-SO-4003 Drawing Ironwood Electronics, Inc. Tele: (800) 404-0204 www.ironwoodelectronics.com	Material: Material <not specified> Finish: Weight: 47.04	STATUS: Released	SHEET: 4 OF 5	REV. A
		ENG: V. Panavala	DRAWN BY: M. Raske	SCALE: 3:1
		FILE: CBT-SO-4003 Dwg	DATE: 2/23/2016	




DETAIL A
SCALE 16 : 1



SECTION A-A
SCALE 16 : 1

Description: SBT-SOP90 11x21.9mm 0.5mm pitch

Primary dimension units are millimeters, Secondary dimension units are [inches], Weight is in grams.
 Tolerances: Hole diameters ±0.0254mm [±0.001"], Pitches (from true position) ±0.0762mm [±0.003"], substrate thickness tolerance ±10%, all other tolerances ±0.127mm [±0.005"] unless stated otherwise. Materials and specifications are subject to change without notice.

 CBT-SO-4003 Drawing Ironwood Electronics, Inc. Tele: (800) 404-0204 www.ironwoodelectronics.com	Material: Material <not specified> Finish: Weight: 47.04	STATUS: Released	SHEET: 5 OF 5	REV. A
		ENG: V. Panavala	DRAWN BY: M. Raske	SCALE: 2:1
		FILE: CBT-SO-4003 Dwg	DATE: 2/23/2016	