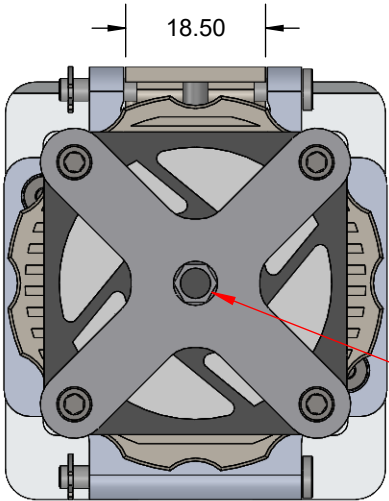


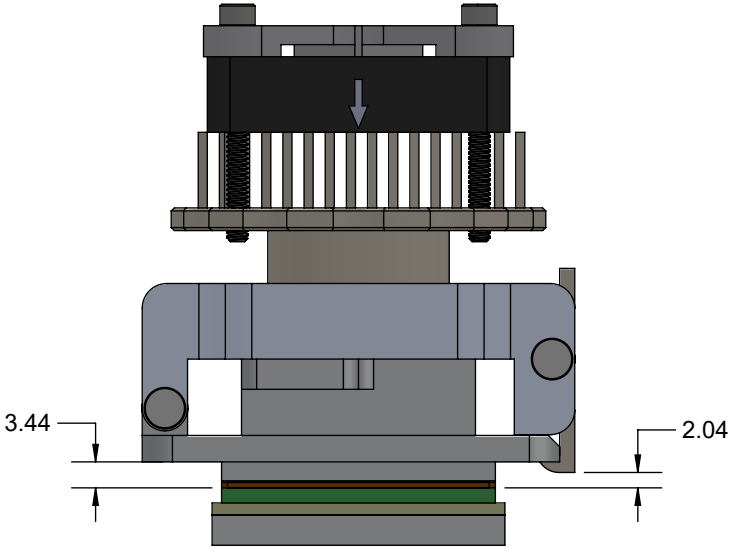
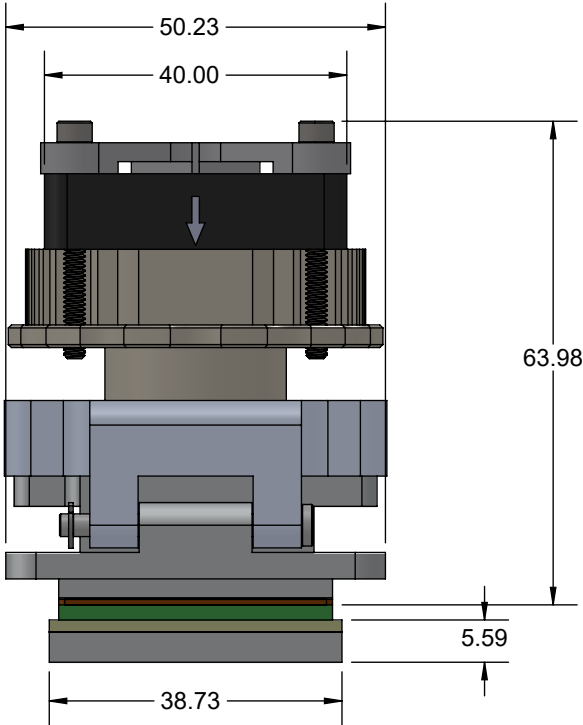
# GHz BGA Socket - Direct mount, solderless



## Features


- Directly mounts to target PCB (needs tooling holes) with hardware
- High speed, reliable Elastomer connection
- Minimum real estate required
- Compression plate distributes forces evenly

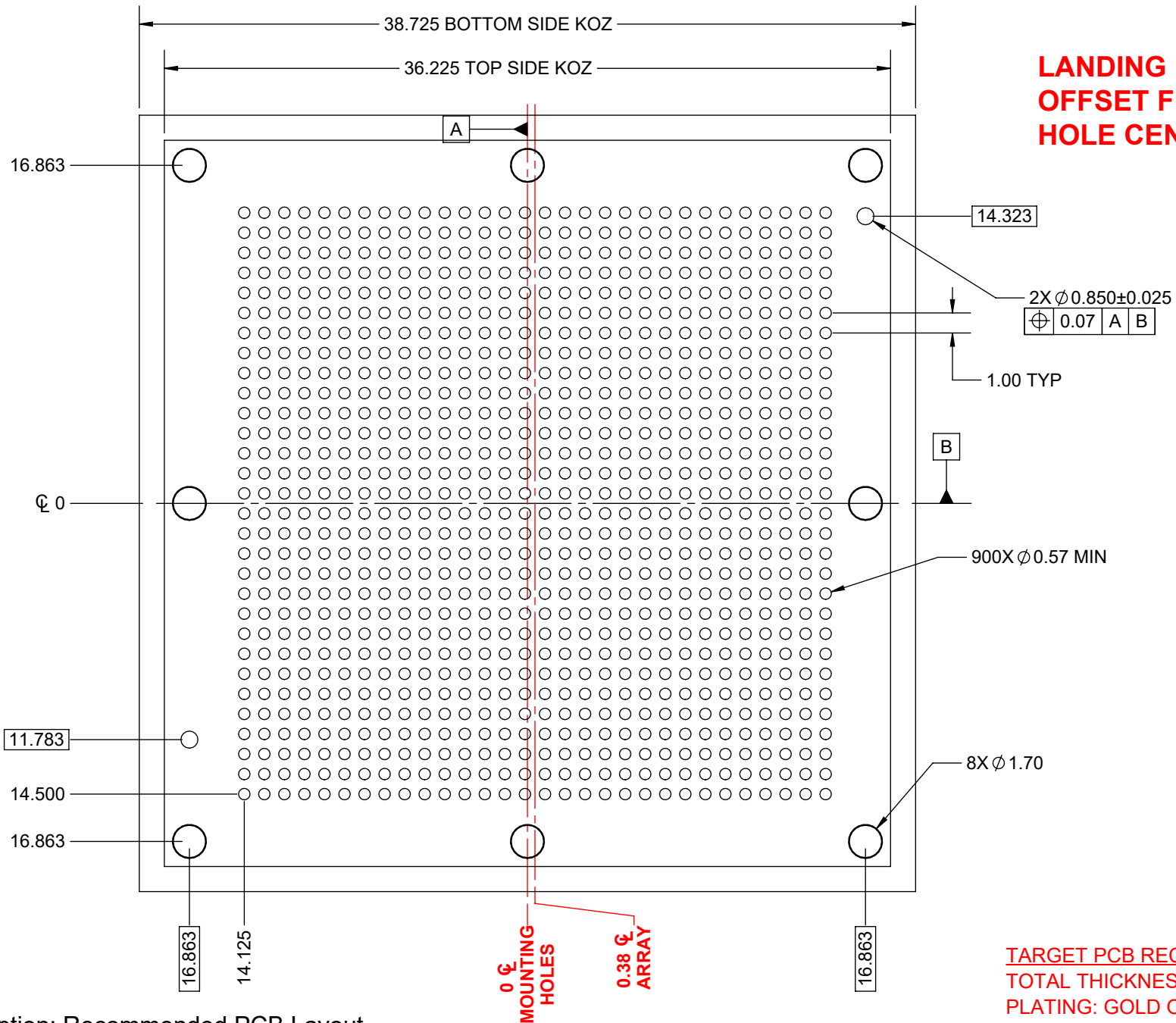
**REQUIRED TORQUE: 14 IN-LB, 158 N-CM**  
**RECOMMENDED TORQUE DRIVER TL-TORQUEDRIVER-02**



## Description: M24 Heat Sink Assembly

Primary dimension units are millimeters, Secondary dimension units are [inches], Weight is in grams.  
 Tolerances: Hole diameters  $\pm 0.0254\text{mm}$  [ $\pm 0.001$ "]. Pitches (from true position)  $\pm 0.0762\text{mm}$  [ $\pm 0.003$ "], substrate thickness tolerance  $\pm 10\%$ , all other tolerances  $\pm 0.127\text{mm}$  [ $\pm 0.005$ "] unless stated otherwise. Materials and specifications are subject to change without notice.

 <b>CG-BGA-4027 Drawing</b> ©2019 Ironwood Electronics, Inc. Tele: (800) 404-0204 www.ironwoodelectronics.com	Material: Finish: Weight: 227.23	STATUS: Released ENG: M. Raske FILE: CG-BGA-4027 Dwg	SHEET: 1 OF 4 DRAWN BY: M. Raske DATE: 10/04/2019	REV. A SCALE: 1:1




**LANDING PAD ARRAY IS  
OFFSET FROM MOUNTING  
HOLE CENTER LINE**

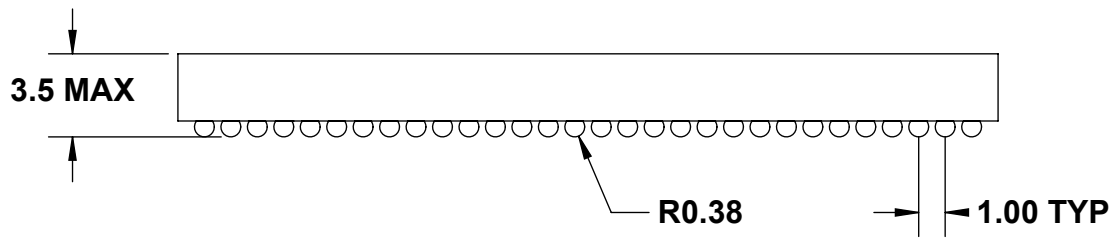
**TARGET PCB RECOMMENDATIONS**  
**TOTAL THICKNESS: 1.6 - 5.0mm**  
**PLATING: GOLD OR SOLDER FINISH**  
**RECOMMENDATION LINK: [CLICK HERE](#)**

**Description: Recommended PCB Layout**

Primary dimension units are millimeters, Secondary dimension units are [inches], Weight is in grams.  
 Tolerances: Hole diameters  $\pm 0.03\text{mm}$  [ $\pm 0.001"$ ], Pitches (from true position)  $\pm 0.025\text{mm}$  [ $\pm 0.001"$ ], substrate thickness tolerance  $\pm 10\%$ , all other tolerances  $\pm 0.13\text{mm}$  [ $\pm 0.005"$ ] unless stated otherwise. Materials and specifications are subject to change without notice.

 <b>CG-BGA-4027 Drawing</b> ©2019 Ironwood Electronics, Inc. Tele: (800) 404-0204 www.ironwoodelectronics.com	Material: Finish: Weight: 227.23	STATUS: Released ENG: M. Raske FILE: CG-BGA-4027 Dwg	SHEET: 2 OF 4 DRAWN BY: M. Raske DATE: 10/04/2019	REV. A SCALE: 3.5:1
--	--	--	---	------------------------

**IRONWOOD PACKAGE  
CODE: BGA900A**




Dimensions are in millimeters.

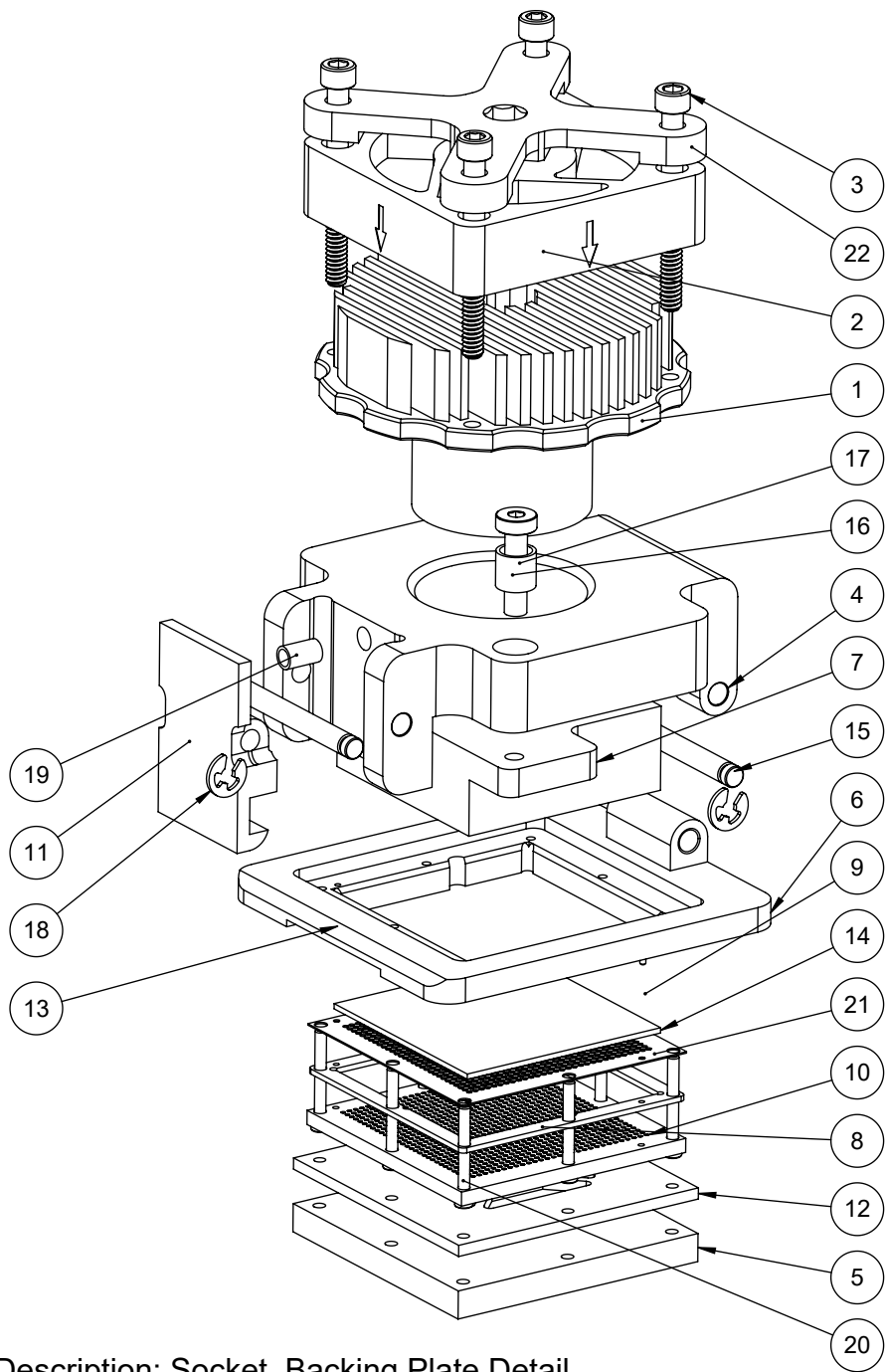
1. Interpret dimensions and tolerances per ASME Y14.5M-1994.
2. Dimension b is measured at the maximum solder ball diameter, parallel to datum plane Z.
3. Datum Z (seating plane) is defined by the spherical crowns of the solder balls.
4. Parallelism measurement shall exclude any effect of mark on top surface of package.

**Description: Compatible Device**

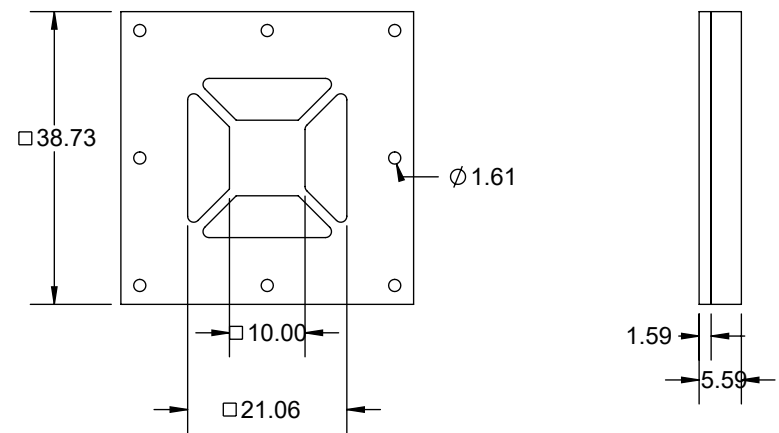
Primary dimension units are millimeters, Secondary dimension units are [inches], Weight is in grams.

Tolerances: Hole diameters  $\pm 0.03\text{mm}$  [ $\pm 0.001"$ ], Pitches (from true position)  $\pm 0.025\text{mm}$  [ $\pm 0.001"$ ], substrate thickness tolerance  $\pm 10\%$ , all other tolerances  $\pm 0.13\text{mm}$  [ $\pm 0.005"$ ] unless stated otherwise. Materials and specifications are subject to change without notice.

 <p><b>CG-BGA-4027 Drawing</b> ©2019 Ironwood Electronics, Inc. Tele: (800) 404-0204 www.ironwoodelectronics.com</p>	<p>Material: FR4 Standard Finish: Weight: 3.33</p>	STATUS: Released	SHEET: 3 OF 4	REV. A
		ENG: M. Raske	DRAWN BY: M. Raske	SCALE: 3.5:1
		FILE: CG-BGA-4027 Dwg	DATE: 10/04/2019	



ITEM NO.	DESCRIPTION	QTY.
1	HEAT SINK COMPRESSION SCREW M24	1
2	FAN 40X10MM 12VDC 1.6W 9.9CFM	1
3	Socket Head Cap Screw, 4-40 x 1 1/18" long, SS	4
4	CLAMSHELL SOCKET LID 35mm	1
5	BACKING PLATE	1
6	SOCKET BASE	1
7	COMPRESSION PLATE	1
8	ELASTOMER GUIDE 31mm IC	1
9	CUSTOMER's BGA IC	1
10	PCB BGA900 30X30 ARRAY 1mm	1
11	LATCH	1
12	INSULATION PLATE	1
13	DOWEL PIN, 1/32" X 3/16", SS	2
14	63 DEG ANGLED ELASTOMER	1
15	HINGE PIN STAINLESS STEEL	2
16	SCREW, M3 X 12mm, LOW HEAD CAP, SS	2
17	SPRING CLAMSHELL LID ASSEMBLY	2
18	RETAINING RING	2
19	COMPRESSION SPRING	1
20	#0-80 X 0.5, SH CAP SCREW	8
21	BALL GUIDE	1
22	TORQUING BRACKET	1



### Description: Socket, Backing Plate Detail

Primary dimension units are millimeters, Secondary dimension units are [inches], Weight is in grams.

Tolerances: Hole diameters  $\pm 0.03\text{mm}$  [ $\pm 0.001"$ ], Pitches (from true position)  $\pm 0.025\text{mm}$  [ $\pm 0.001"$ ], substrate thickness tolerance  $\pm 10\%$ , all other tolerances  $\pm 0.13\text{mm}$  [ $\pm 0.005"$ ] unless stated otherwise. Materials and specifications are subject to change without notice.

#### CG-BGA-4027 Drawing



©2019 Ironwood Electronics, Inc.  
Tele: (800) 404-0204  
www.ironwoodelectronics.com

Material:  
Finish:  
Weight: 227.23

STATUS: Released

ENG: M. Raske

FILE: CG-BGA-4027 Dwg

SHEET: 4 OF 4

DRAWN BY: M. Raske

DATE: 10/04/2019

REV. A

SCALE: 1:1