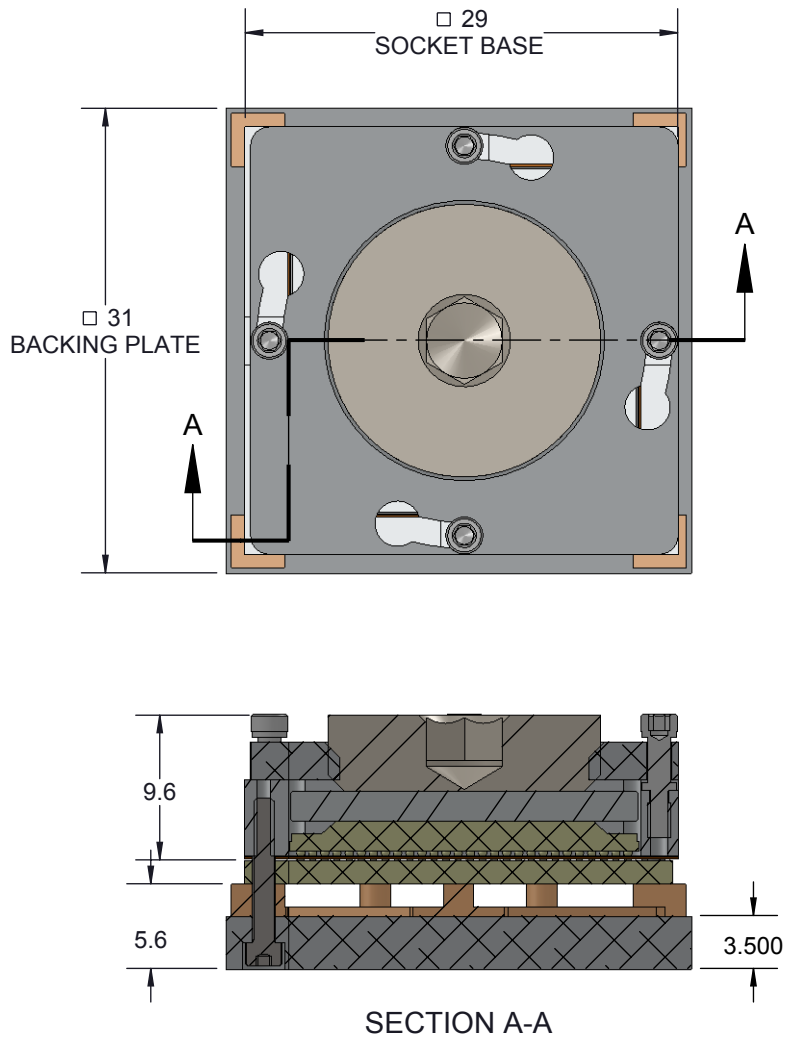


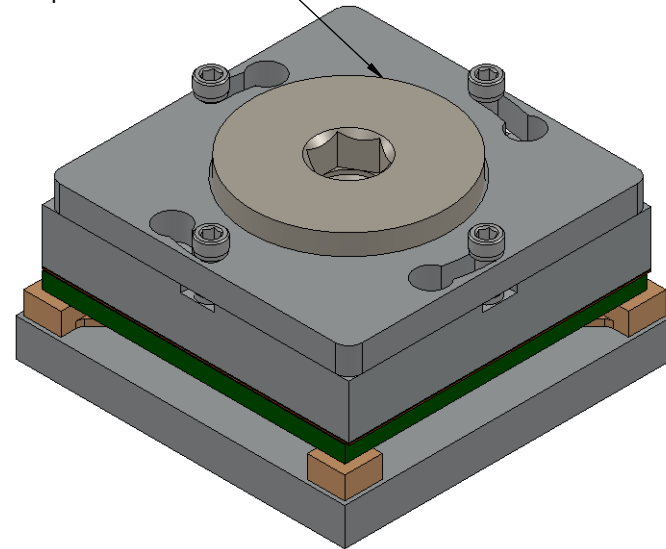
Silver Button (GT) BGA Socket - Direct mount, solderless

Features

- Directly mounts to target PCB (needs tooling holes) with hardware
- High speed, reliable Elastomer connection
- Minimum real estate required
- Compression plate distributes forces evenly
- Ball guide prevents over compression of elastomer
- Easily removable swivel socket lid




Recommended torque = 15-20 in-lbs



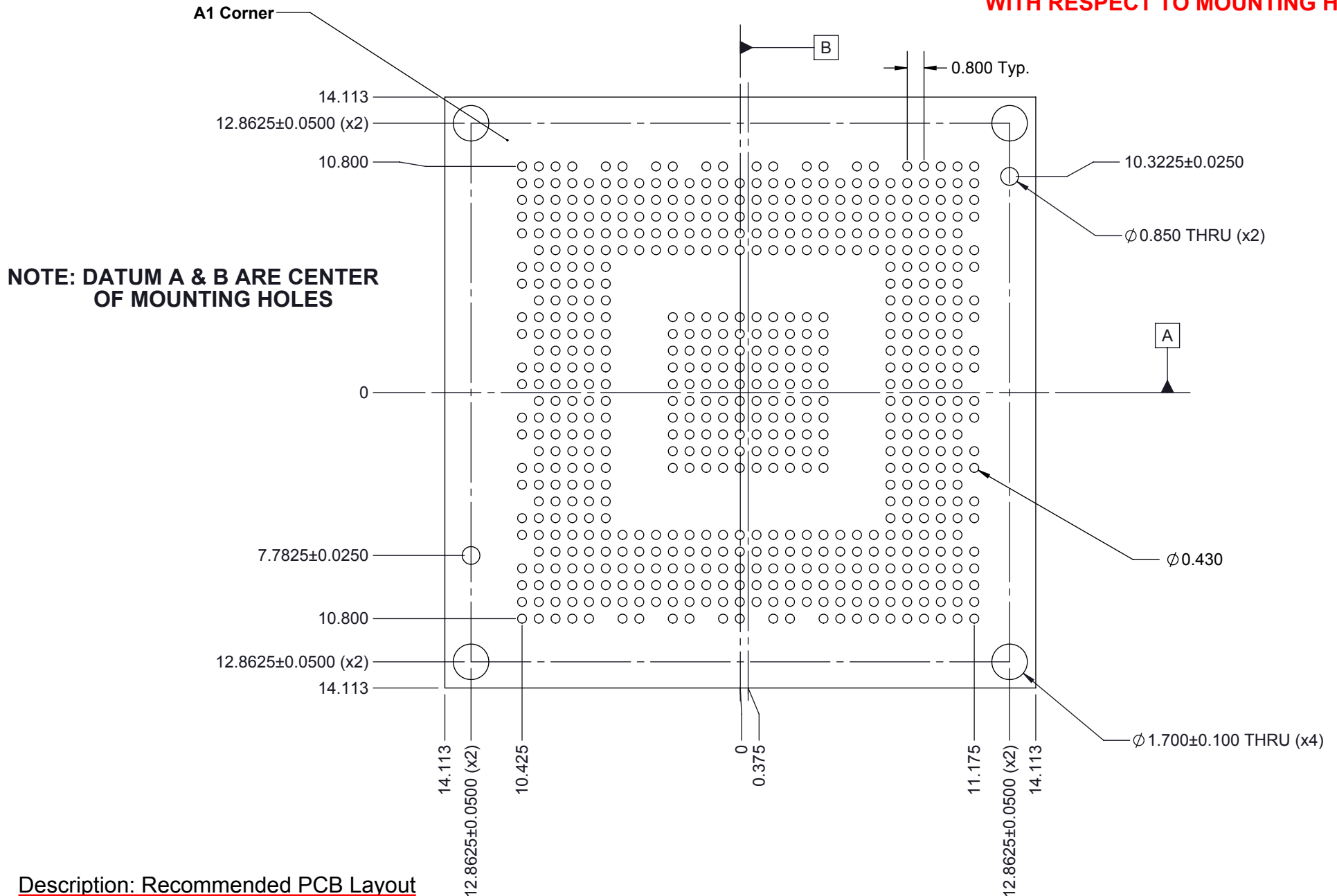
Description: GT-BGA602 swivel lid 23x23mm 0.8mm 28x28 array

Primary dimension units are millimeters, Secondary dimension units are [inches], Weight is in grams.

Tolerances: Hole diameters $\pm 0.0254\text{mm}$ [± 0.001 "]. Pitches (from true position) $\pm 0.0762\text{mm}$ [± 0.003 "]. substrate thickness tolerance $\pm 10\%$, all other tolerances $\pm 0.127\text{mm}$ [± 0.005 "] unless stated otherwise. Materials and specifications are subject to change without notice.


 GT-BGA-2016 Drawing Ironwood Electronics, Inc. Tele: (800) 404-0204 www.ironwoodelectronics.com	Material: N/A Finish: N/A Weight: 27.03	STATUS: Released ENG: S. Huang FILE: GT-BGA-2016 Dwg	SHEET: 1 OF 4 DRAWN BY: M. Raske DATE: 01/15/2015	REV. A SCALE: 2:1

NOTE: BGA PATTERN IS OFFSET 0.375 MM WITH RESPECT TO MOUNTING HOLES

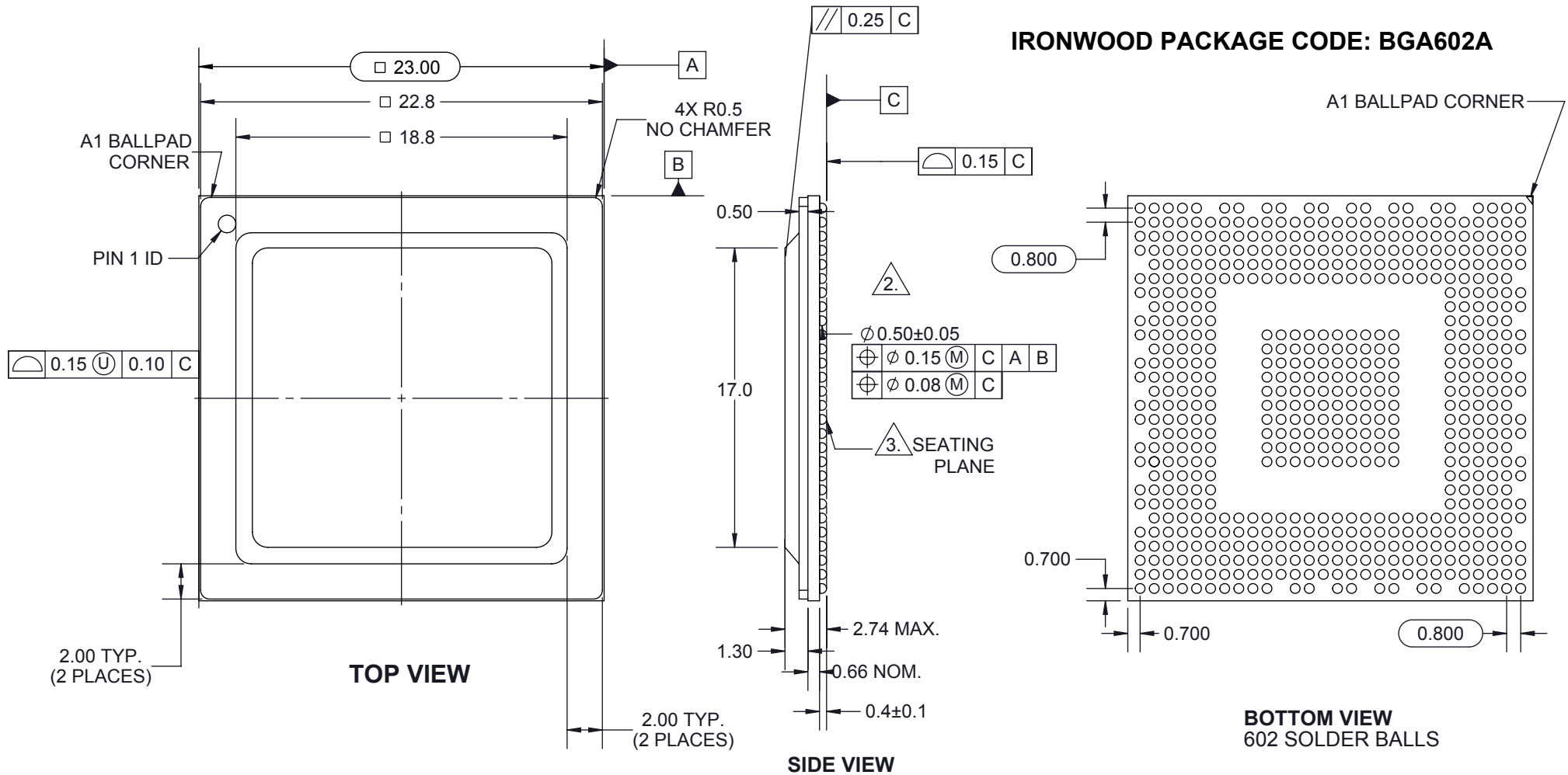


Description: Recommended PCB Layout

Primary dimension units are millimeters, Secondary dimension units are [inches], Weight is in grams.
 Tolerances: Hole diameters $\pm 0.03\text{mm}$ [$\pm 0.001"$], Pitches (from true position) $\pm 0.025\text{mm}$ [$\pm 0.001"$], substrate thickness tolerance $\pm 10\%$, all other tolerances $\pm 0.13\text{mm}$ [$\pm 0.005"$] unless stated otherwise. Materials and specifications are subject to change without notice.

 GT-BGA-2016 Drawing Ironwood Electronics, Inc. Tele: (800) 404-0204 www.ironwoodelectronics.com	Material: N/A Finish: N/A Weight: 27.03	STATUS: Released	SHEET: 2 OF 4	REV. A
		ENG: S. Huang	DRAWN BY: M. Raske	SCALE: 4:1
		FILE: GT-BGA-2016 Dwg	DATE: 01/15/2015	

IRONWOOD PACKAGE CODE: BGA602A




Dimensions are in millimeters.

1. Interpret dimensions and tolerances per ASME Y14.5M-1994.
2. Dimension b is measured at the maximum solder ball diameter, parallel to datum plane Z.
3. Datum Z (seating plane) is defined by the spherical crowns of the solder balls.
4. Parallelism measurement shall exclude any effect of mark on top surface of package.

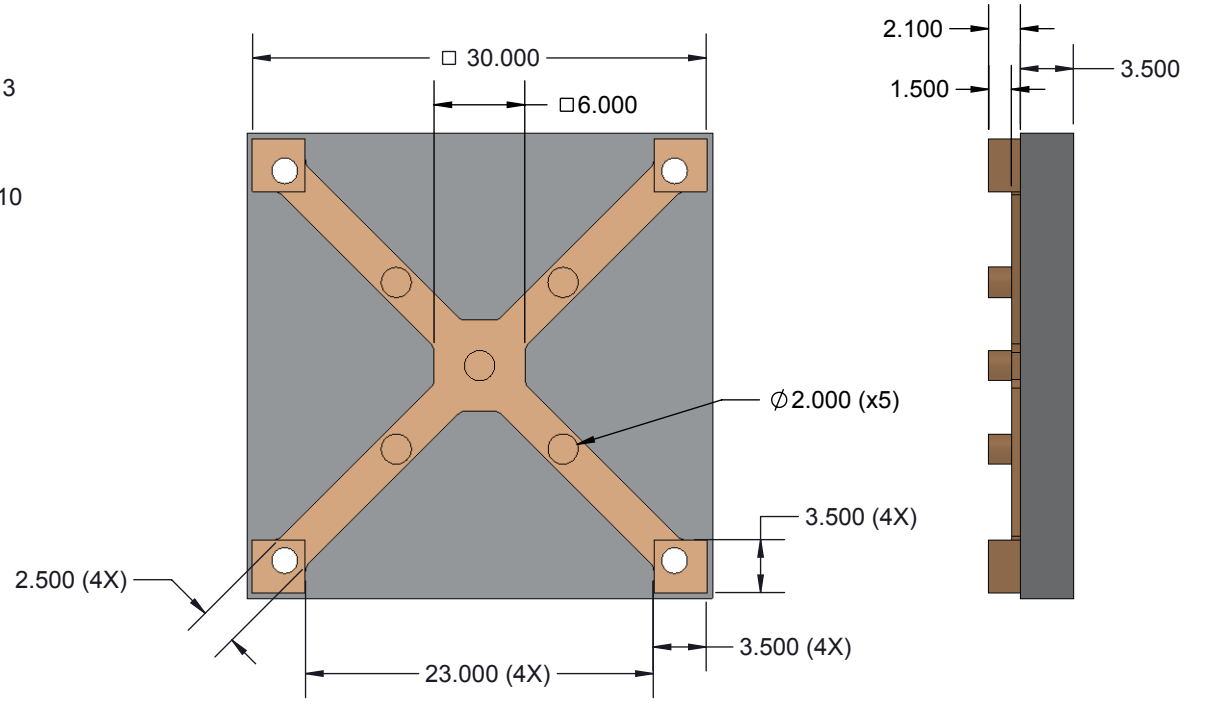
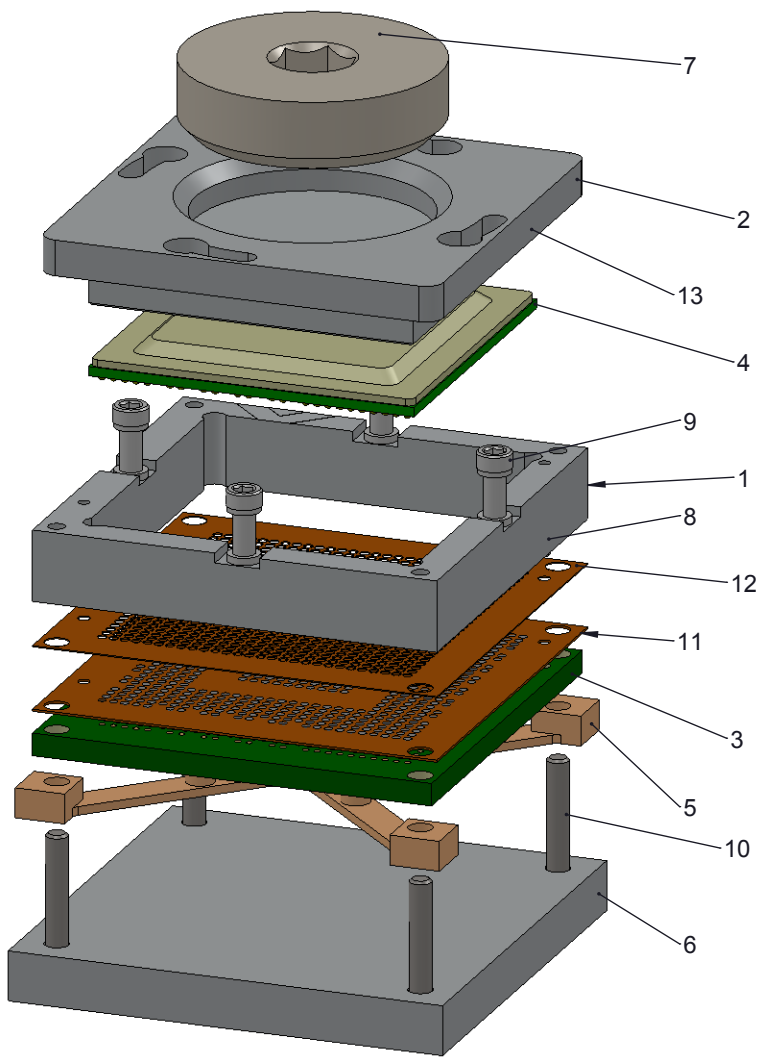
Description: Compatible Device

Primary dimension units are millimeters, Secondary dimension units are [inches], Weight is in grams.

Tolerances: Hole diameters $\pm 0.03\text{mm}$ [± 0.001 "], Pitches (from true position) $\pm 0.025\text{mm}$ [± 0.001 "], substrate thickness tolerance $\pm 10\%$, all other tolerances $\pm 0.13\text{mm}$ [± 0.005 "] unless stated otherwise. Materials and specifications are subject to change without notice.


 <p>GT-BGA-2016 Drawing Ironwood Electronics, Inc. Tele: (800) 404-0204 www.ironwoodelectronics.com</p>	<p>Material: N/A Finish: N/A Weight: 27.03</p>	STATUS: Released	SHEET: 3 OF 4	REV. A
		ENG: S. Huang	DRAWN BY: M. Raske	SCALE: 3:1
		FILE: GT-BGA-2016 Dwg	DATE: 01/15/2015	

ITEM NO.	Description	Material
1	SBT Ni Plt 23x23mm with 0.375 sft	7075-T6 Alumium Alloy
2	SBT Ni plt skt lid 23mm	7075-T6, Plate (SS)
3	PCB 23x23mm 28x28 0.8mm pitch BGA602	FR4 Standard
4	BGA602 IC 23mm 0.8mm pitch 28x28 array	FR4 Standard
5	Custom Insulation Plate 23mm IC	Ultem 1000
6	SBT/CBT NI PLT BACKING PLT 23MM	7075-T6, Plate (SS)
7	Compression Screw, M18	7075-T6 Aluminum Alloy
8	Dowel Pin, 1/32" x 3/16", SS	Chrome Stainless Steel
9	#0-80 Shoulder Screw, 0.090" thread length	Stainless Steel (303)
10	#0-80 X .375 LG, SOC HD CAP SCREW, ALLOY STL, BLK OXIDE	Alloy Steel
11	GT Elastomer 23x23mm IC 0.8mm pitch 29x29 array	Conductive Elastomer
12	Ball guide for 23mm 28x28 0.8mm pitch	Kapton Polyimide/Cirlex
13	SBT COMP PLT NI PLT 23MM CSTM 2mm thick	7075-T6 Aluminum Alloy



Description: Socket, Backing Plate Detail

Primary dimension units are millimeters, Secondary dimension units are [inches], Weight is in grams.
 Tolerances: Hole diameters ±0.03mm [±0.001"], Pitches (from true position) ±0.025mm [±0.001"], substrate thickness tolerance ±10%, all other tolerances ±0.13mm [±0.005"] unless stated otherwise. Materials and specifications are subject to change without notice.

 GT-BGA-2016 Drawing Ironwood Electronics, Inc. Tele: (800) 404-0204 www.ironwoodelectronics.com	Material: N/A Finish: N/A Weight: 27.03	STATUS: Released	SHEET: 4 OF 4	REV. A
		ENG: S. Huang	DRAWN BY: M. Raske	SCALE: 2:1
		FILE: GT-BGA-2016 Dwg	DATE: 01/15/2015	