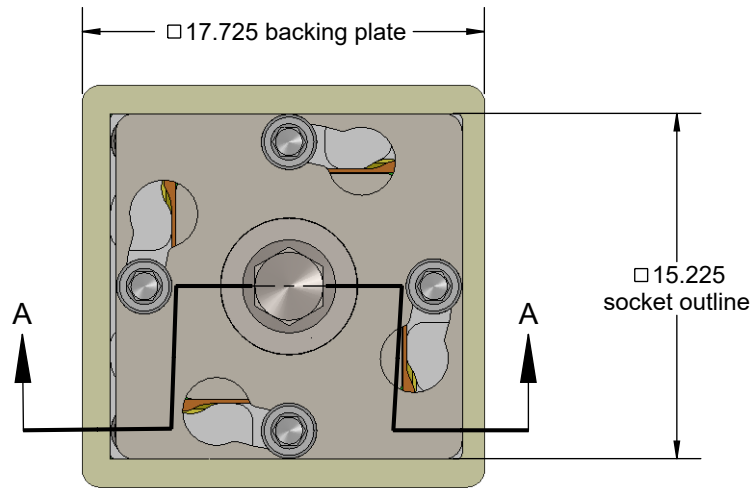


Silver Button (GT) BGA Socket - Direct mount, solderless



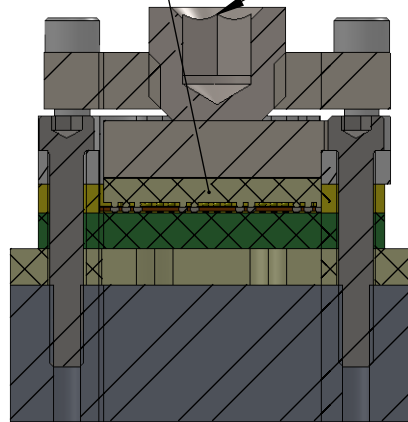
TOP VIEW

Features

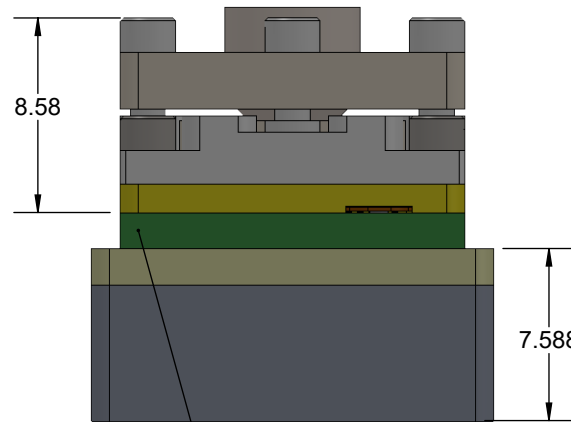
- Directly mounts to target PCB (needs tooling holes) with hardware
- High speed, reliable Elastomer connection
- Minimum real estate required
- Compression plate distributes forces evenly
- Ball guide prevents over compression of elastomer
- Easily removable swivel socket lid

Required torque 3 in lb
Recommended tool: Contact Ironwood.

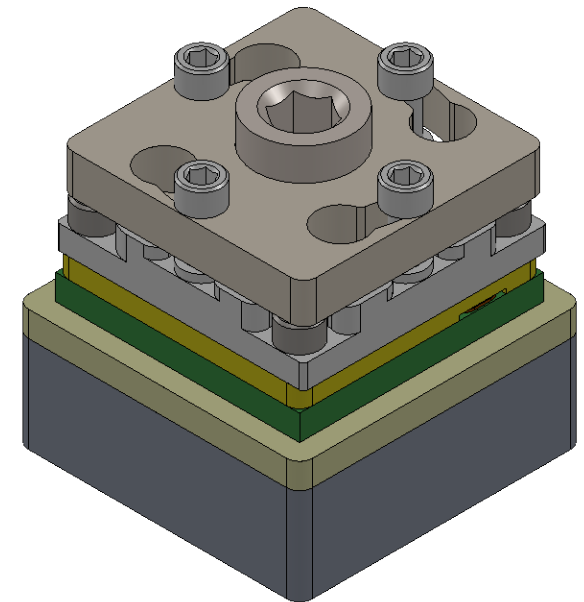
customer's BGA device



SECTION A-A




customer's target PCB

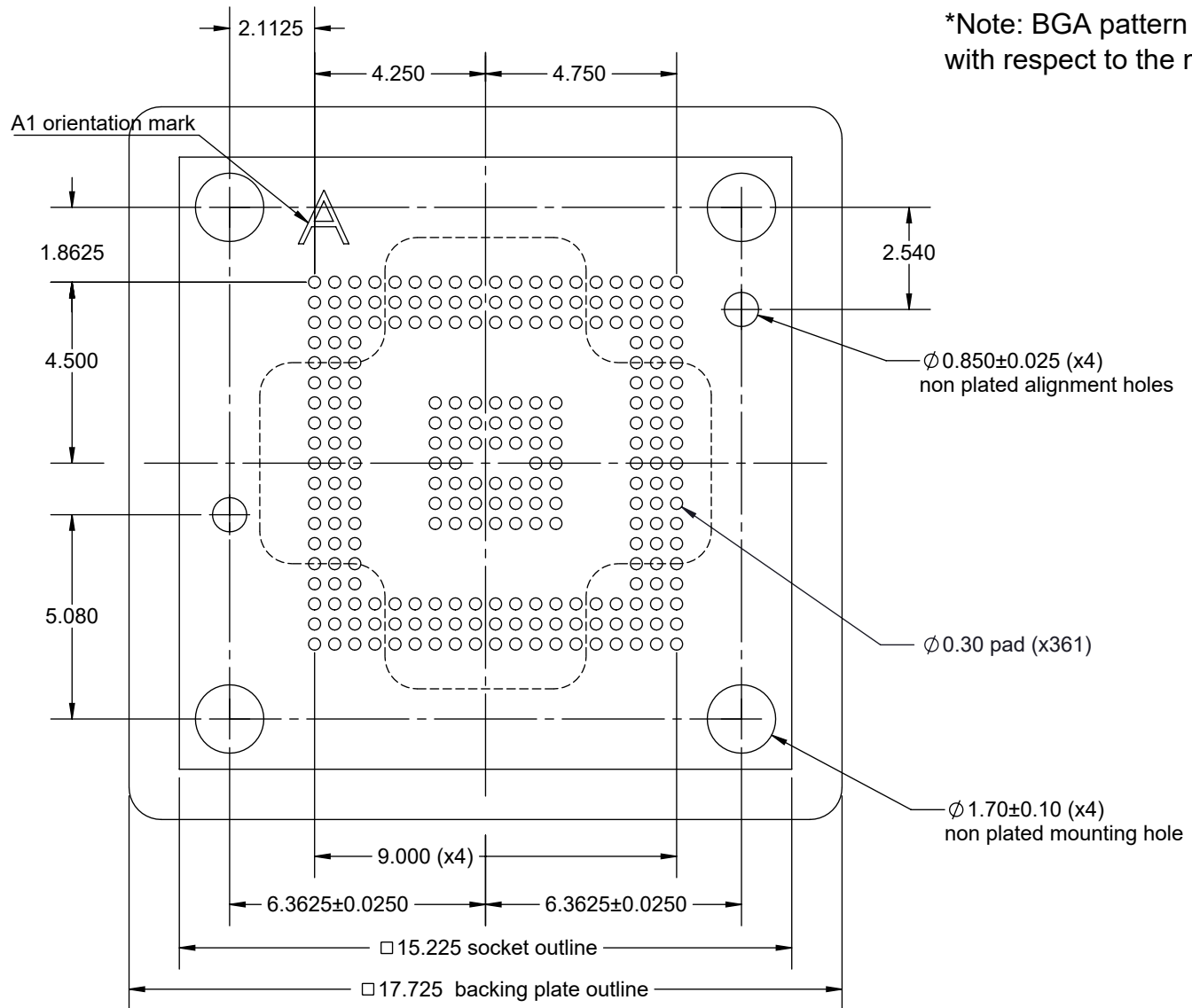


Description: Elastomer socket for 10x10mm, 19x19, 0.5mm pitch

Primary dimension units are millimeters, Secondary dimension units are [inches], Weight is in grams.

Tolerances: Hole diameters $\pm 0.03\text{mm}$ [$\pm 0.001"$], Pitches (from true position) $\pm 0.025\text{mm}$ [$\pm 0.001"$], substrate thickness tolerance $\pm 10\%$, all other tolerances $\pm 0.13\text{mm}$ [$\pm 0.005"$] unless stated otherwise. Materials and specifications are subject to change without notice.

 <p>GT-BGA-2060 Drawing Ironwood Electronics, Inc. Tele: (800) 404-0204 www.ironwoodelectronics.com</p>	Material: N/A Finish: N/A Weight: 11.39	STATUS: Released ENG: S. Huang FILE: GT-BGA-2060 Dwg	SHEET: 1 OF 4 DRAWN BY: M. Raske DATE: 01/10/2016	REV. A SCALE: 3:1



*Note: BGA pattern is not symmetrical with respect to the mounting holes.

Target PCB Recommendations

Total thickness: 1.6mm min.


Plating: Gold or Solder finish

PCB Pad height: Same or higher than solder mask

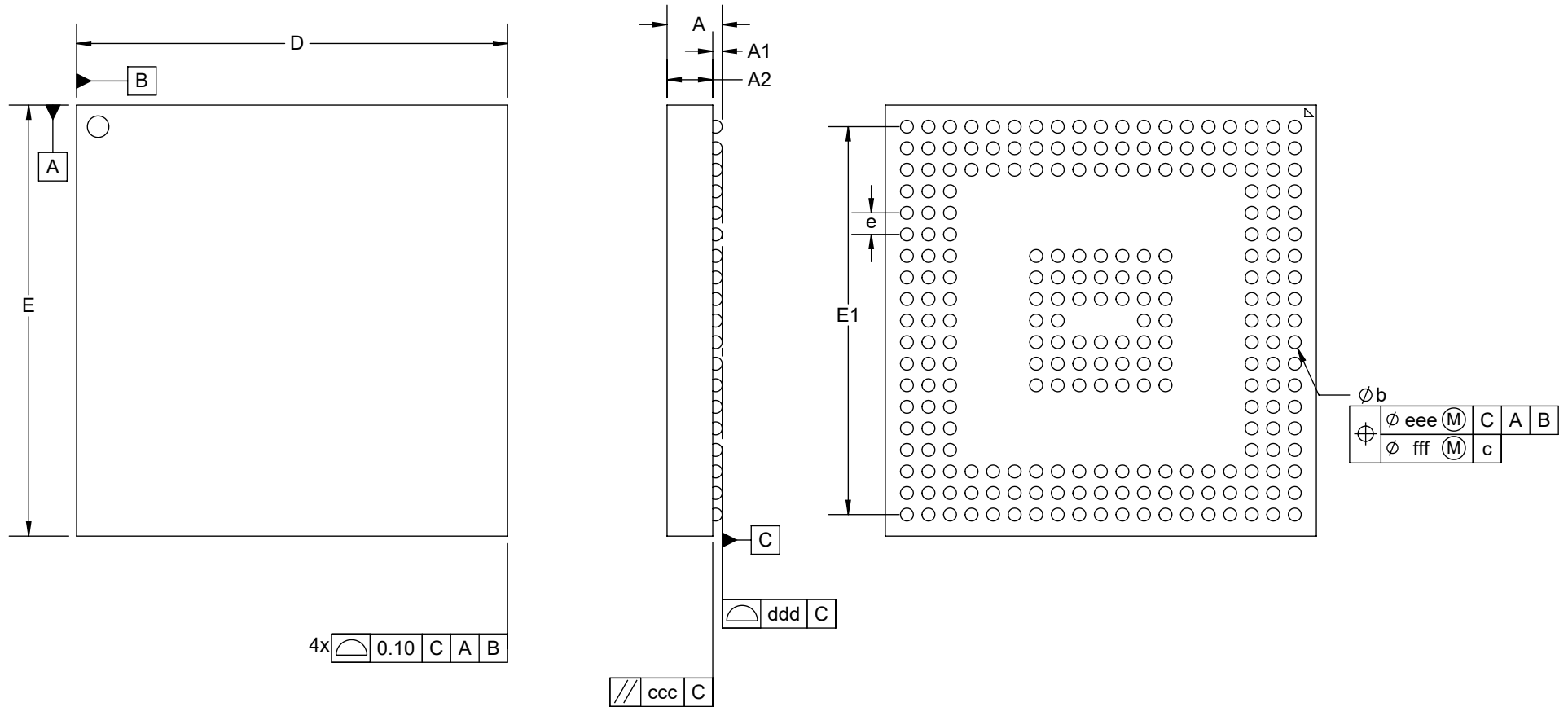
Description: Recommended PCB Layout

Primary dimension units are millimeters, Secondary dimension units are [inches], Weight is in grams.

Tolerances: Hole diameters $\pm 0.03\text{mm}$ [$\pm 0.001"$], Pitches (from true position) $\pm 0.025\text{mm}$ [$\pm 0.001"$], substrate thickness tolerance $\pm 10\%$, all other tolerances $\pm 0.13\text{mm}$ [$\pm 0.005"$] unless stated otherwise. Materials and specifications are subject to change without notice.

 GT-BGA-2060 Drawing Ironwood Electronics, Inc. Tele: (800) 404-0204 www.ironwoodelectronics.com	Material: N/A Finish: N/A Weight: 11.39	STATUS: Released	SHEET: 2 OF 4	REV. A
		ENG: S. Huang	DRAWN BY: M. Raske	SCALE: 6:1
		FILE: GT-BGA-2060 Dwg	DATE: 01/10/2016	

Ironwood Package Code BGA238C



DIM	MIN	NOM	MAX
A	1.18	1.28	1.38
A1	0.17	0.22	0.27
A2	1.01	1.06	1.11
b	0.25	0.30	0.35
D/E	9.90	10.00	10.10
D1/E1	9.00		
e	0.50		
ccc	0.10		
ddd	0.08		
eee	0.15		
fff	0.05		


Dimensions are in millimeters.

1. Interpret dimensions and tolerances per ASME Y14.5M-1994.
2. Dimension b is measured at the maximum solder ball diameter, parallel to datum plane C.
3. Datum C (seating plane) is defined by the spherical crowns of the solder balls.
4. Parallelism measurement shall exclude any effect of mark on top surface of package.

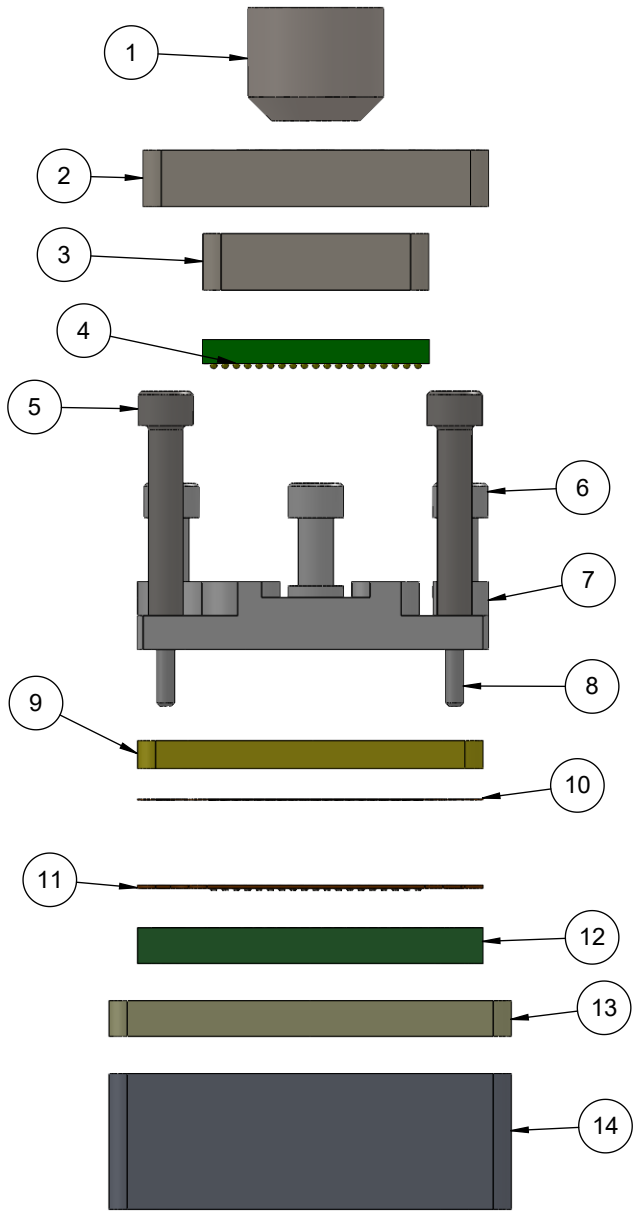
Description: Compatible Device

Primary dimension units are millimeters, Secondary dimension units are [inches], Weight is in grams.

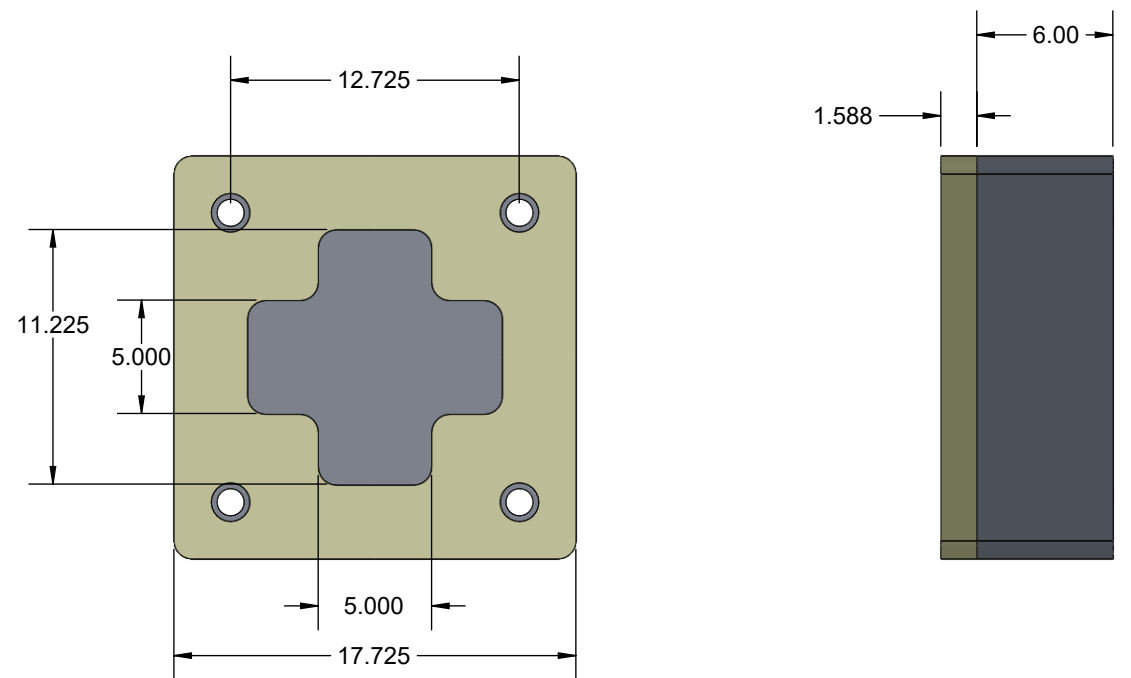
Tolerances: Hole diameters $\pm 0.03\text{mm}$ [$\pm 0.001"$], Pitches (from true position) $\pm 0.025\text{mm}$ [$\pm 0.001"$], substrate thickness tolerance $\pm 10\%$, all other tolerances $\pm 0.13\text{mm}$ [$\pm 0.005"$] unless stated otherwise. Materials and specifications are subject to change without notice.

 GT-BGA-2060 Drawing Ironwood Electronics, Inc. Tele: (800) 404-0204 www.ironwoodelectronics.com	Material: N/A Finish: N/A Weight: 11.39	STATUS: Released ENG: S. Huang FILE: GT-BGA-2060 Dwg	SHEET: 3 OF 4 DRAWN BY: M. Raske DATE: 01/10/2016	REV. A SCALE: 7:1

19 x 19 array




ITEM NO.	DESCRIPTION	Material
1	Compression Screw M6x1	Stainless Steel (18-8)
2	Socket Lid	7075-T6 Aluminum Alloy
3	Compression Plate	7075-T6 Aluminum Alloy
4	Test Chip	
5	#0-80 X .375 LG, SOC HD CAP SCREW, ALLOY STL, BLK OXIDE	Alloy Steel
6	#0-80 Shoulder Screw, 1.59mm thread length	Stainless Steel (303)
7	SM Socket Base 10mm IC 3mm Thk 0.25mm shift	7075-T6 Aluminum Alloy
8	Dowel Pin, 1/32" x 3/16", SS	Chrome Stainless Steel
9	GT IC Guide 10x10mm	Torlon 4203
10	Ball Guide 0.5mm pitch 19x19array 0.25mm shifting	Kapton Polyimide/Cirlex
11	GT BGA238 18x18 array 0.5mm pitch 0.25mm shifting	N/A
12	Target PCB 10x10mm 0.5mm pitch 19x19 array BGA238	FR4
13	Custom insulation plate 10mm	FR4 Standard
14	Backing Plate, 17.73 X 17.73	7075-T6 Aluminum Alloy



Description: Skt, Backing Plate Detail

Primary dimension units are millimeters, Secondary dimension units are [inches], Weight is in grams.
 Tolerances: Hole diameters $\pm 0.03\text{mm}$ [$\pm 0.001"$], Pitches (from true position) $\pm 0.025\text{mm}$ [$\pm 0.001"$], substrate thickness tolerance $\pm 10\%$, all other tolerances $\pm 0.13\text{mm}$ [$\pm 0.005"$] unless stated otherwise. Materials and specifications are subject to change without notice.

 GT-BGA-2060 Drawing Ironwood Electronics, Inc. Tele: (800) 404-0204 www.ironwoodelectronics.com	Material: N/A Finish: N/A Weight: 11.39	STATUS: Released	SHEET: 4 OF 4	REV. A
		ENG: S. Huang	DRAWN BY: M. Raske	SCALE: 3:1
		FILE: GT-BGA-2060 Dwg	DATE: 01/10/2016	