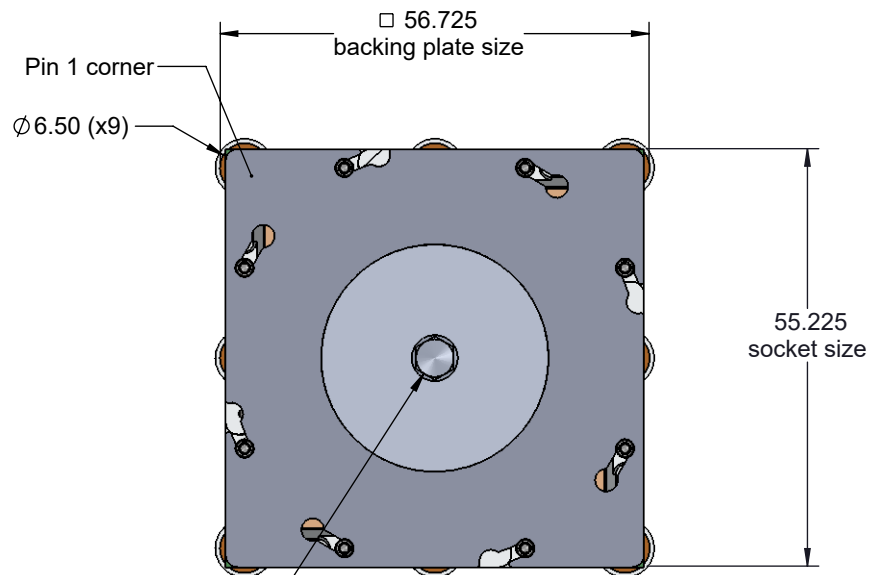
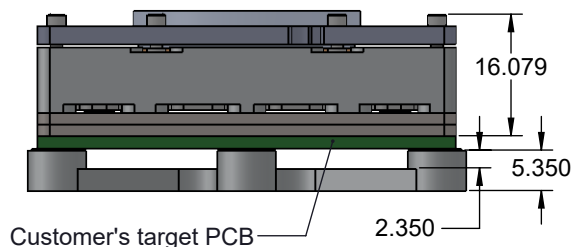


SBT-SOIC DIRECT MOUNT, SOLDERLESS SOCKET FOR BURN-IN AND TEST APPLICATIONS

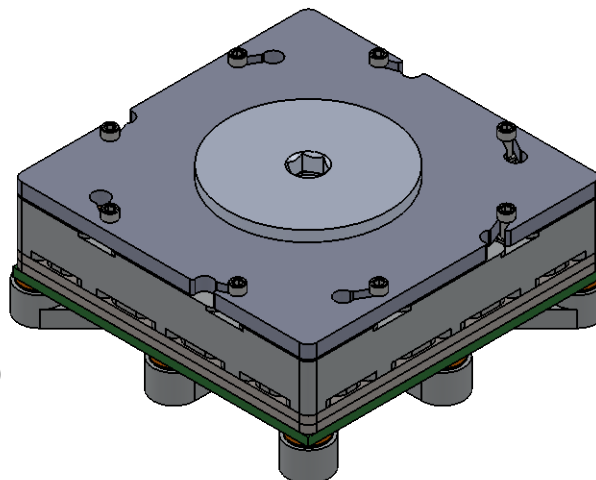


Required torque: 0.5 in lb
Recommended tool: TL-Torquedriver-09

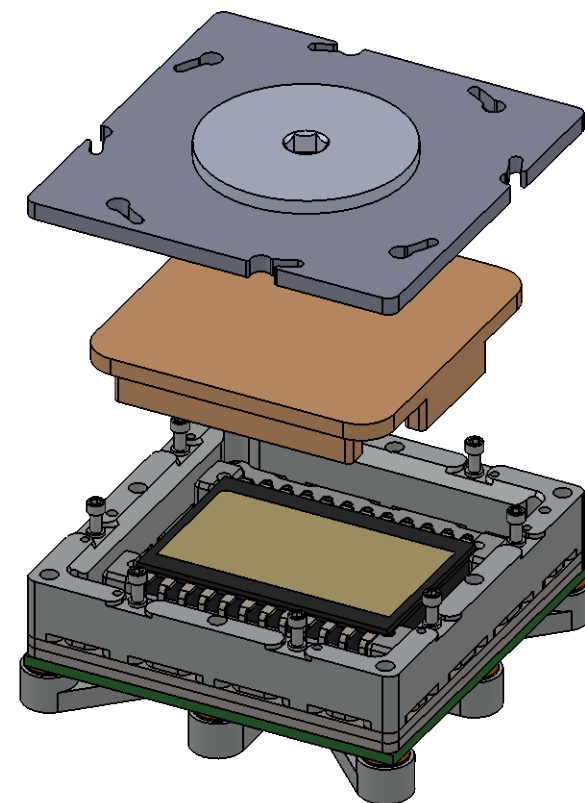


Features

- Wide temperature range (-55C to +180C).
- High current capability (up to 4A).
- Excellent signal integrity at high frequencies.
- Low and stable contact resistance for reliable production yield.
- Highly compliant to accommodate wide co-planarity variations.
- Automated probe manufacturing enables low cost and short lead time.



LID CLOSE



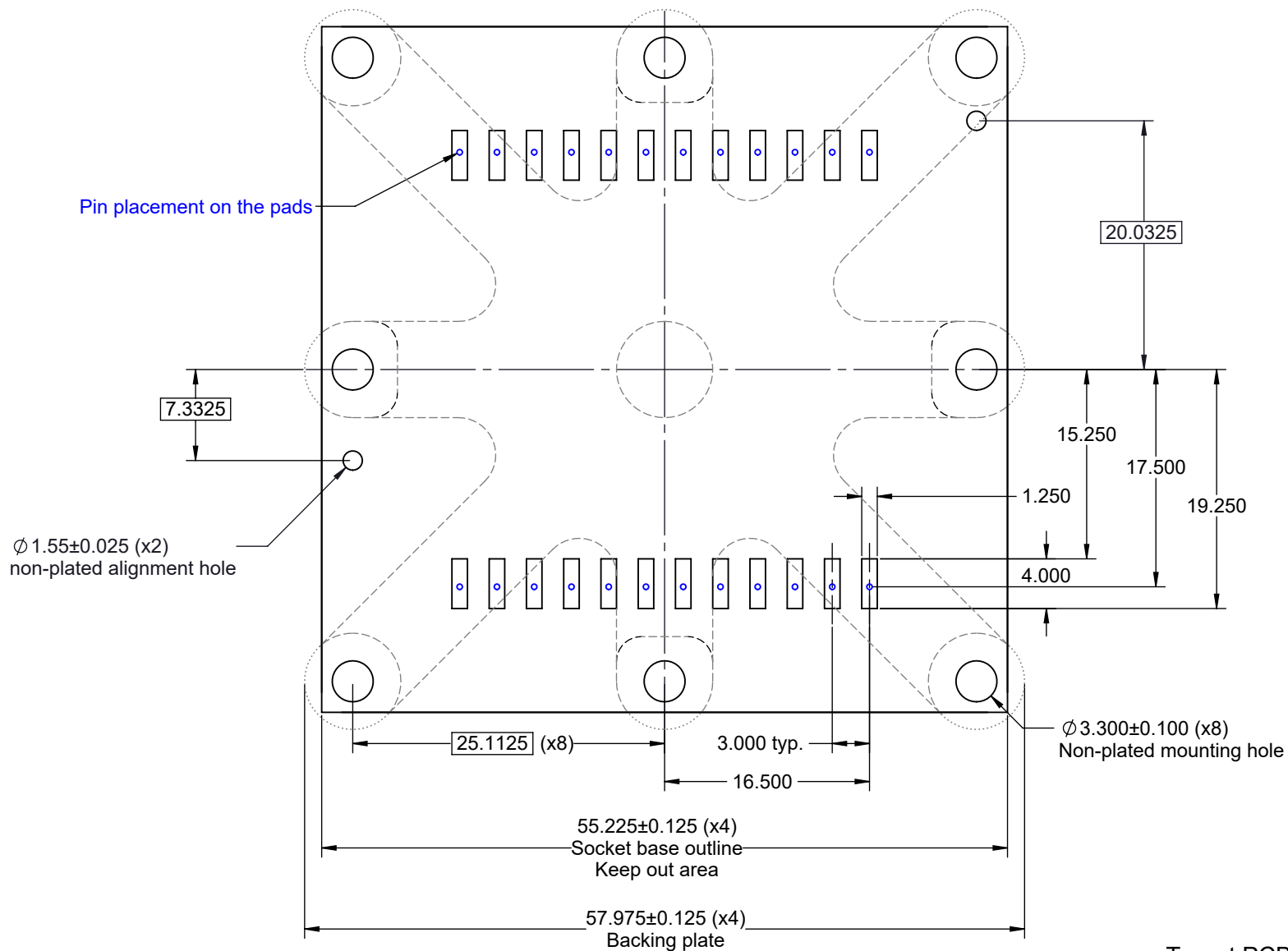
LID OPEN

Description: SBT SOIC Socket 39mm tip to tip, 25mm body to body, 3mm pitch

Primary dimension units are millimeters, Secondary dimension units are [inches], Weight is in grams.

Tolerances: Hole diameters $\pm 0.03\text{mm}$ [$\pm 0.001"$], Pitches (from true position) $\pm 0.025\text{mm}$ [$\pm 0.001"$], substrate thickness tolerance $\pm 10\%$, all other tolerances $\pm 0.13\text{mm}$ [$\pm 0.005"$] unless stated otherwise. Materials and specifications are subject to change without notice.

SBT-SOIC-2000 Drawing Ironwood Electronics, Inc. Tele: (800) 404-0204 www.ironwoodelectronics.com	Material: N/A Finish: N/A Weight: 101.80	STATUS: Released ENG: S. Huang FILE: SBT-SOIC-2000 Dwg	SHEET: 1 OF 5 DRAWN BY: M. Raske DATE: 12/13/2017	REV. A SCALE: 1:1
---	--	--	---	----------------------



Target PCB Recommendations
 Total thickness: 1.5mm min.
 Plating: Gold or Solder finish

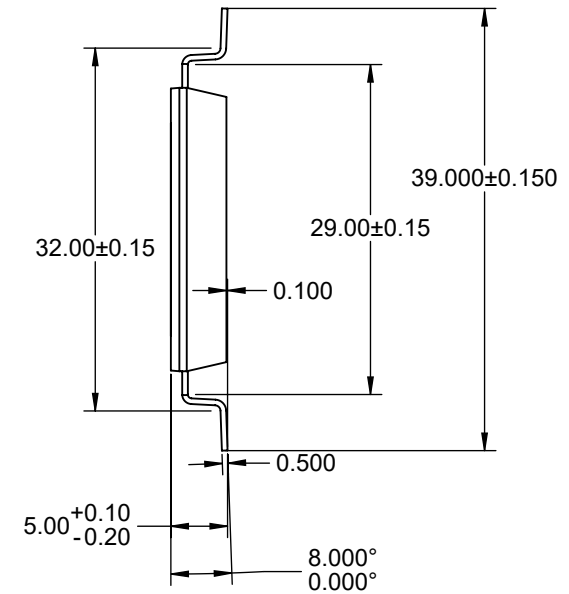
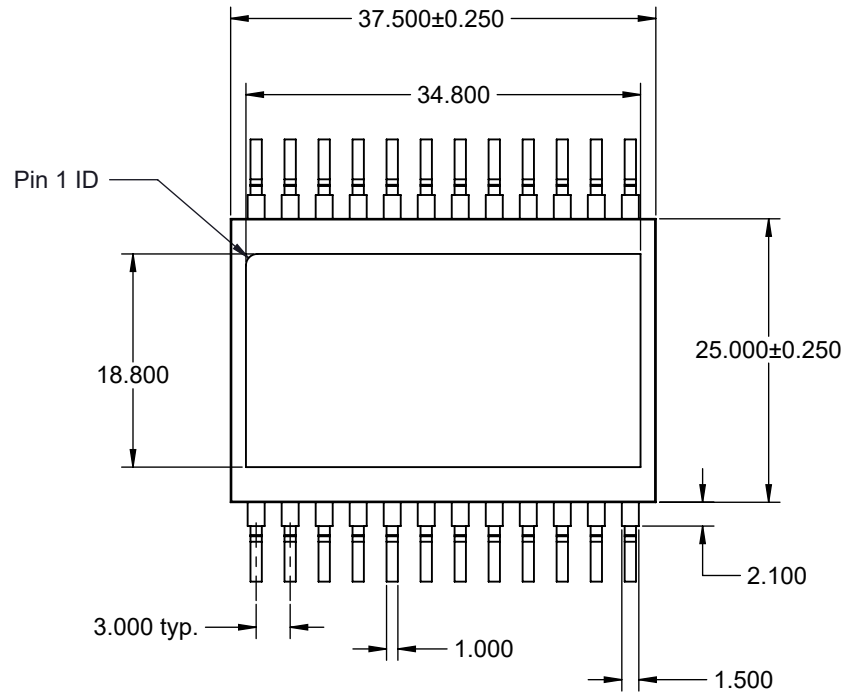
Description: Recommended PCB layout

Primary dimension units are millimeters, Secondary dimension units are [inches], Weight is in grams.

Tolerances: Hole diameters $\pm 0.03\text{mm}$ [$\pm 0.001"$], Pitches (from true position) $\pm 0.025\text{mm}$ [$\pm 0.001"$], substrate thickness tolerance $\pm 10\%$, all other tolerances $\pm 0.13\text{mm}$ [$\pm 0.005"$] unless stated otherwise. Materials and specifications are subject to change without notice.

SBT-SOIC-2000 Drawing	Material: N/A	STATUS: Released	SHEET: 2 OF 5	REV. A
Ironwood Electronics, Inc. Tele: (800) 404-0204 www.ironwoodelectronics.com	Finish: N/A Weight: 101.80	ENG: S. Huang	DRAWN BY: M. Raske	SCALE: 2:1
		FILE: SBT-SOIC-2000 Dwg	DATE: 12/13/2017	

Ironwood Package Code SOIC24M

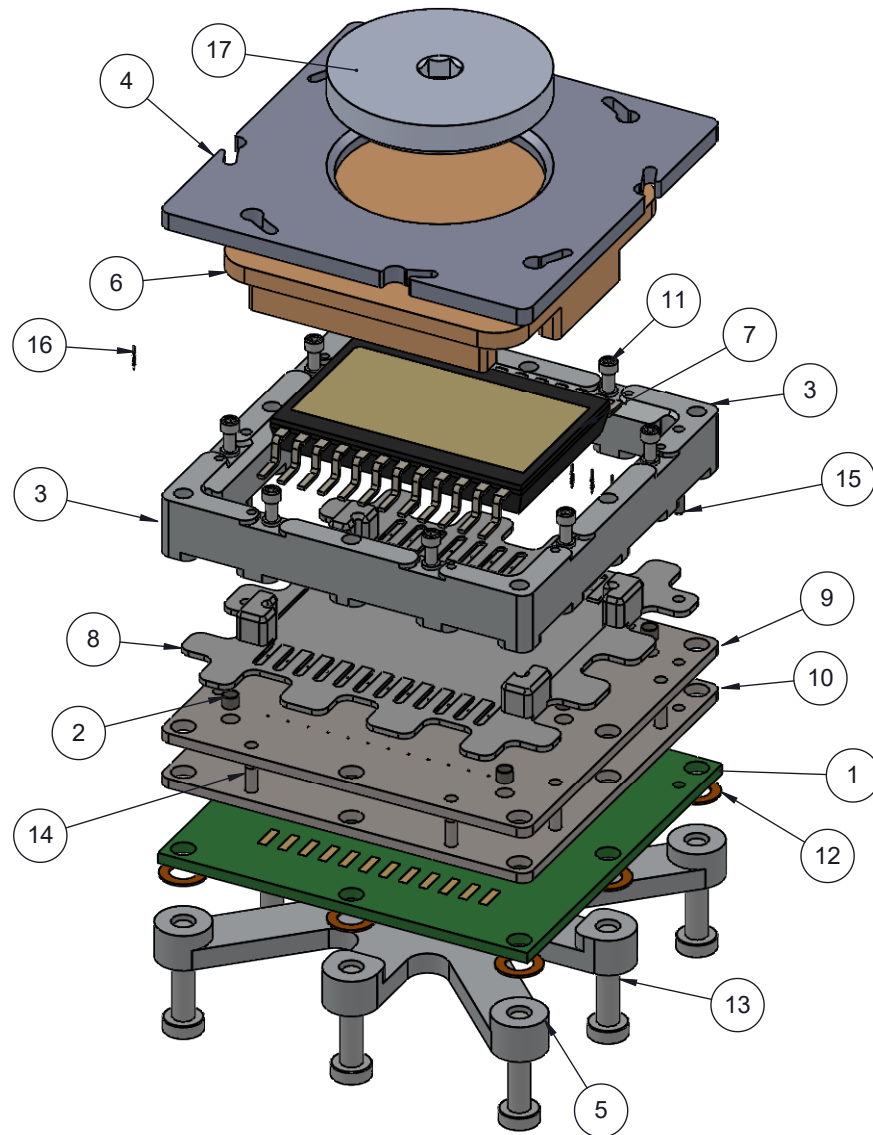


Description: Compatible IC

Primary dimension units are millimeters, Secondary dimension units are [inches], Weight is in grams.

Tolerances: Hole diameters $\pm 0.03\text{mm}$ [$\pm 0.001"$], Pitches (from true position) $\pm 0.025\text{mm}$ [$\pm 0.001"$], substrate thickness tolerance $\pm 10\%$, all other tolerances $\pm 0.13\text{mm}$ [$\pm 0.005"$] unless stated otherwise. Materials and specifications are subject to change without notice.

SBT-SOIC-2000 Drawing	Material: N/A	STATUS: Released	SHEET: 3 OF 5	REV. A
Ironwood Electronics, Inc.	Finish: N/A	ENG: S. Huang	DRAWN BY: M. Raske	SCALE: 1.5:1
Tele: (800) 404-0204 www.ironwoodelectronics.com	Weight: 101.80	FILE: SBT-SOIC-2000 Dwg	DATE: 12/13/2017	



ITEM NO.	DESCRIPTION	Material
1	Customer's target PCB	FR4 Standard
2	Floating Guide Spring	Alloy Steel (SS)
3	SBT Socket Base 45mm IC	7075-T6 Aluminum Alloy
4	Socket Lid for 50mm IC	7075-T6 Aluminum Alloy
5	Backing Plate 50mm IC	7075-T6 Aluminum Alloy
6	SOIC24 Compression Plate	Torlon 5530
7	39mm tip to tip, 25mm body size 3mm pitch SOIC24	FR4 High temp
8	Floating Guide SOIC24 3mm pitch	TECAPEEK CMF Ceramic filled
9	Middle Guide SOIC24 3mm pitch	PEEK
10	Bottom Guide SOIC24 3mm pitch	PEEK
11	#0-80 Shoulder Screw, 2.29mm thread length	Stainless Steel (303)
12	Insulating washer, 6.5mm OD.	Kapton Polyimide/Cirlex
13	M3-0.5 x 13mm long low socket head cap screw	
14	#0-80, 90 deg., head pin guide screw, Peek material 5.5715mm overall Length	PEEK unfilled
15	Dowel Pin, 1.5 Dia, 8mm lg, 18-8 SS	Stainless Steel (18-8)
16	SBT Pin, SBT-BGA 0.5mm-0.8mm	
17	Compression Screw, M30	7075-T6 Aluminum Alloy

Pog Pin View
Scale 14:1

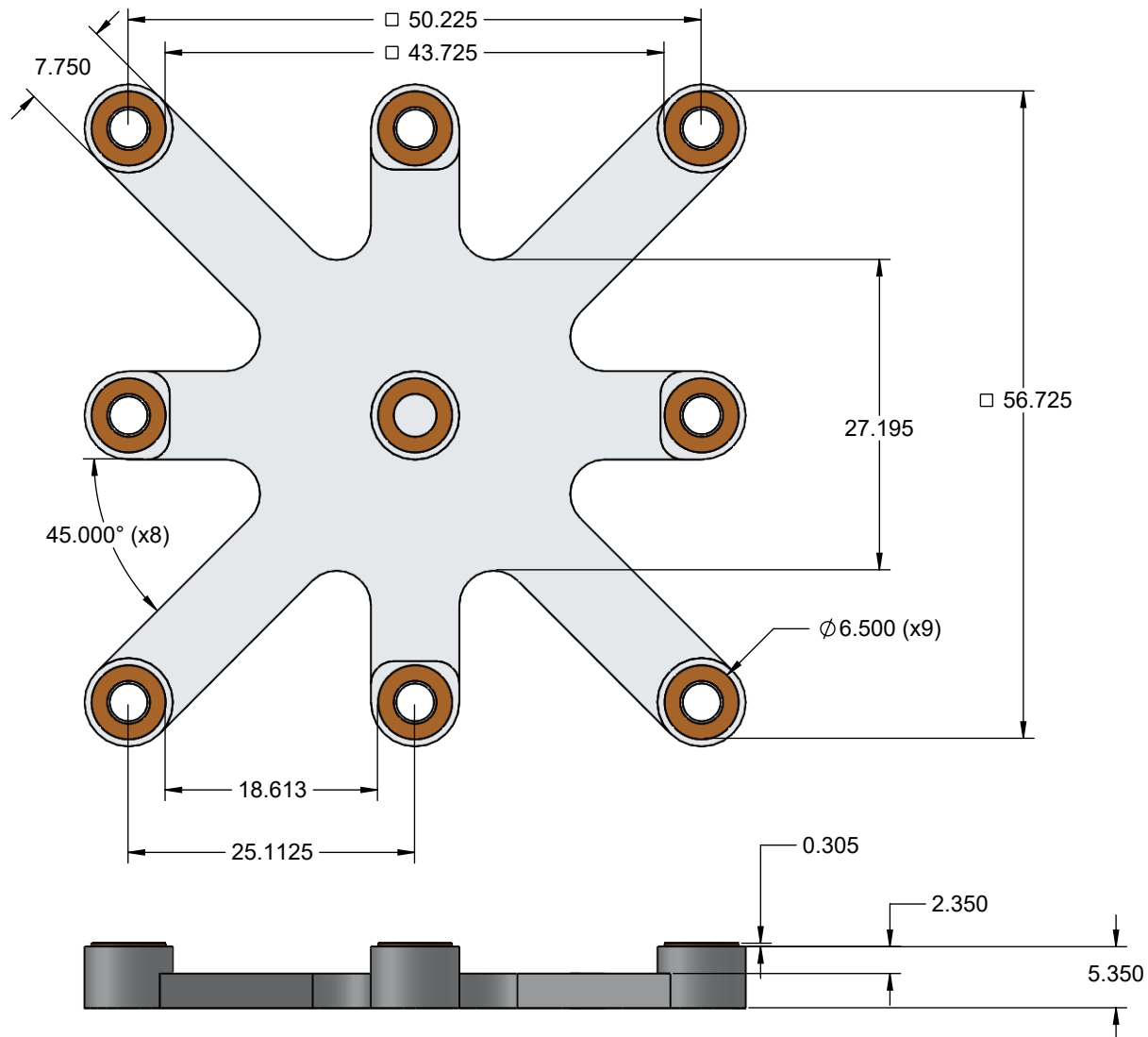


Description: Socket Exploded View

Primary dimension units are millimeters, Secondary dimension units are [inches], Weight is in grams.

Tolerances: Hole diameters $\pm 0.03\text{mm}$ [$\pm 0.001"$], Pitches (from true position) $\pm 0.025\text{mm}$ [$\pm 0.001"$], substrate thickness tolerance $\pm 10\%$, all other tolerances $\pm 0.13\text{mm}$ [$\pm 0.005"$] unless stated otherwise. Materials and specifications are subject to change without notice.

SBT-SOIC-2000 Drawing Ironwood Electronics, Inc. Tele: (800) 404-0204 www.ironwoodelectronics.com	Material: N/A Finish: N/A Weight: 101.80	STATUS: Released	SHEET: 4 OF 5	REV. A
		ENG: S. Huang	DRAWN BY: M. Raske	SCALE: 1:1
		FILE: SBT-SOIC-2000 Dwg	DATE: 12/13/2017	



Description: Skt, Insulation Plate, Pin Det

Primary dimension units are millimeters, Secondary dimension units are [inches], Weight is in grams.

Tolerances: Hole diameters $\pm 0.03\text{mm}$ [$\pm 0.001"$], Pitches (from true position) $\pm 0.025\text{mm}$ [$\pm 0.001"$], substrate thickness tolerance $\pm 10\%$, all other tolerances $\pm 0.13\text{mm}$ [$\pm 0.005"$] unless stated otherwise. Materials and specifications are subject to change without notice.

SBT-SOIC-2000 Drawing Ironwood Electronics, Inc. Tele: (800) 404-0204 www.ironwoodelectronics.com	Material: N/A Finish: N/A Weight: 101.80	STATUS: Released	SHEET: 5 OF 5	REV. A
		ENG: S. Huang	DRAWN BY: M. Raske	SCALE: 1.6:1
		FILE: SBT-SOIC-2000 Dwg	DATE: 12/13/2017	