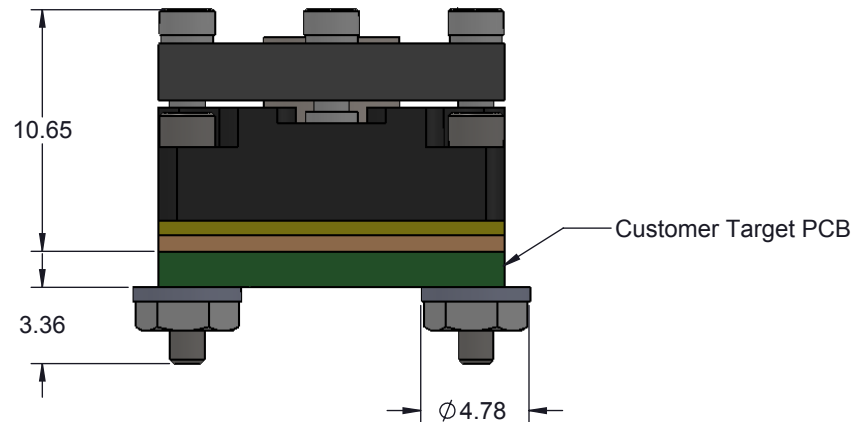
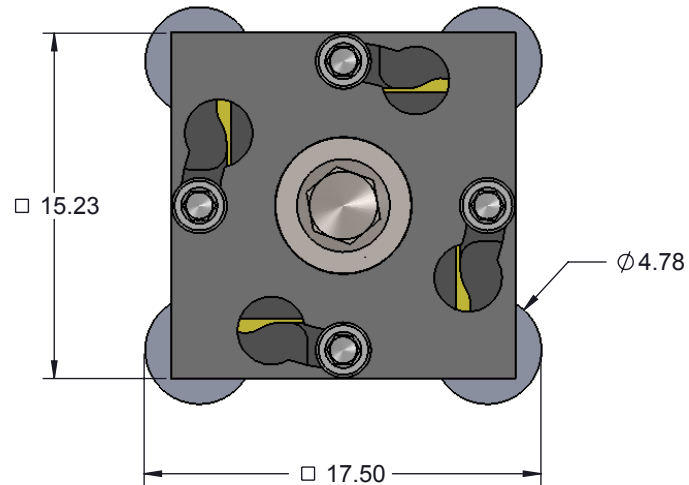


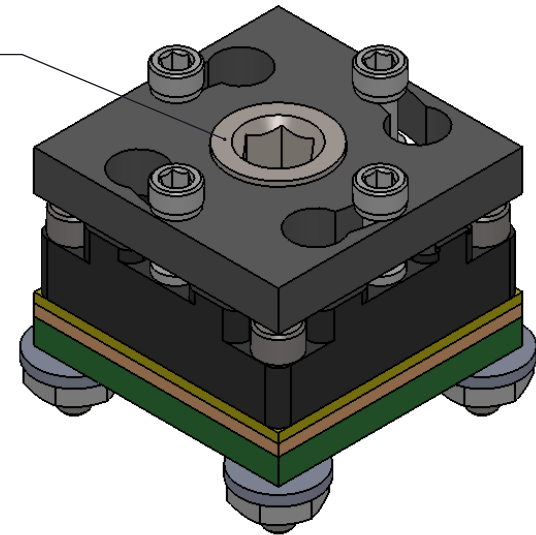
SG-LCC DIRECT MOUNT, SOLDERLESS SOCKET FOR TEST APPLICATIONS

Features

- Wide temperature range (-35C to +100C).
- Current capability (up to 50mA per wire).
- Easily removable swivel socket lid
- Compression plate distributes forces evenly
- High speed, reliable Elastomer connection




Recommended Torque 1 in lbs



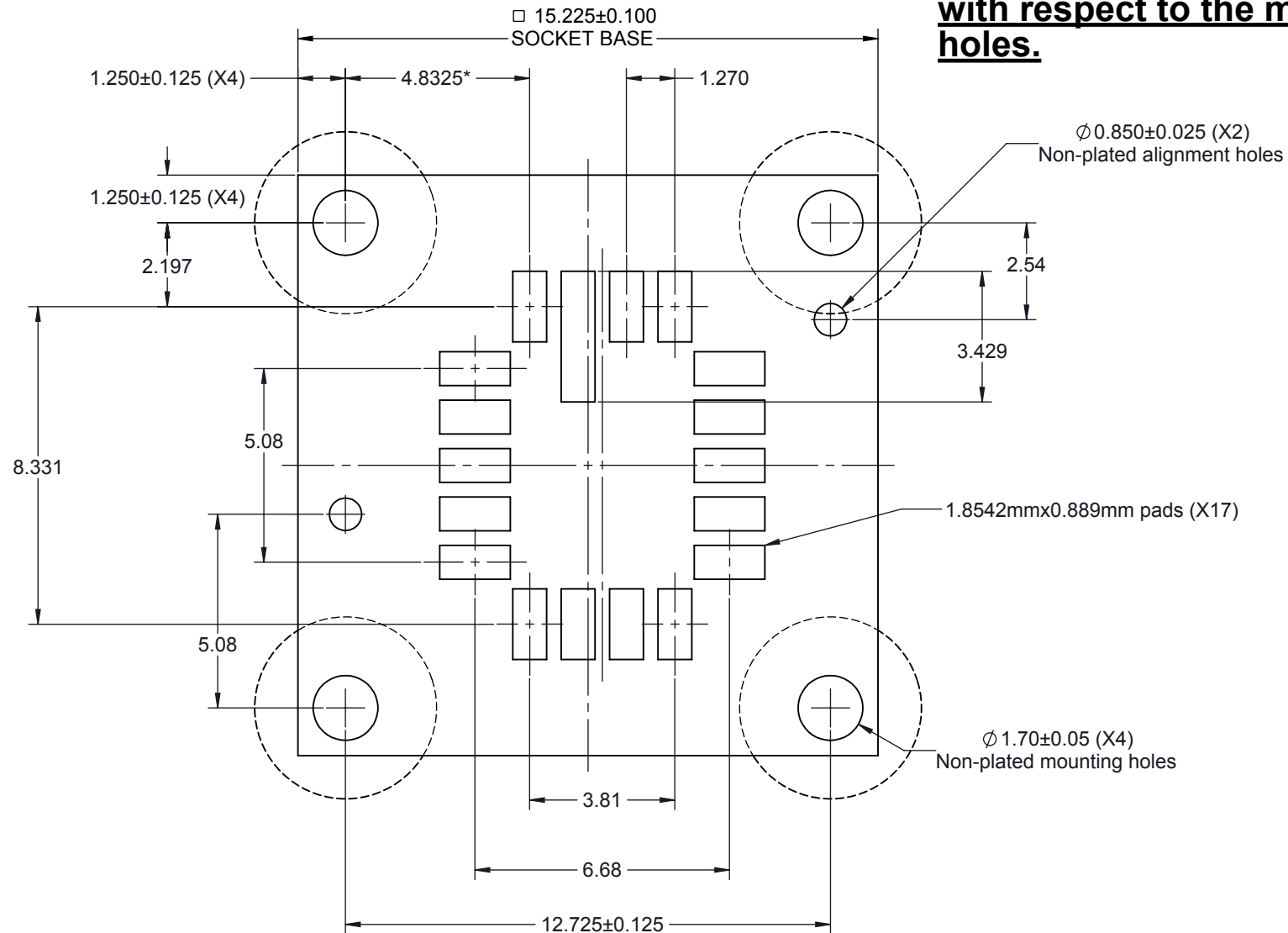
Description: Socket

Primary dimension units are millimeters, Secondary dimension units are [inches], Weight is in grams.

Tolerances: Hole diameters $\pm 0.0254\text{mm}$ [$\pm 0.001"$], Pitches (from true position) $\pm 0.0762\text{mm}$ [$\pm 0.003"$], substrate thickness tolerance $\pm 10\%$, all other tolerances $\pm 0.127\text{mm}$ [$\pm 0.005"$] unless stated otherwise. Materials and specifications are subject to change without notice.

| | | | | |
|--|--|---|---|----------------------|
| SG-LCC-6000 Drawing  ©2015 Ironwood Electronics, Inc. Tele: (800) 404-0204 www.ironwoodelectronics.com | Material: N/A Finish: N/A Weight: 6.55 | STATUS: Released ENG: S. Faiz FILE: SG-LCC-6000 Dwg | SHEET: 1 OF 4 DRAWN BY: D. Hauer DATE: 2/5/2013 | REV. B SCALE: 3:1 |
|--|--|---|---|----------------------|

***Note: LCC pattern is shifted 0.375mm to the right of center with respect to the mounting holes.**




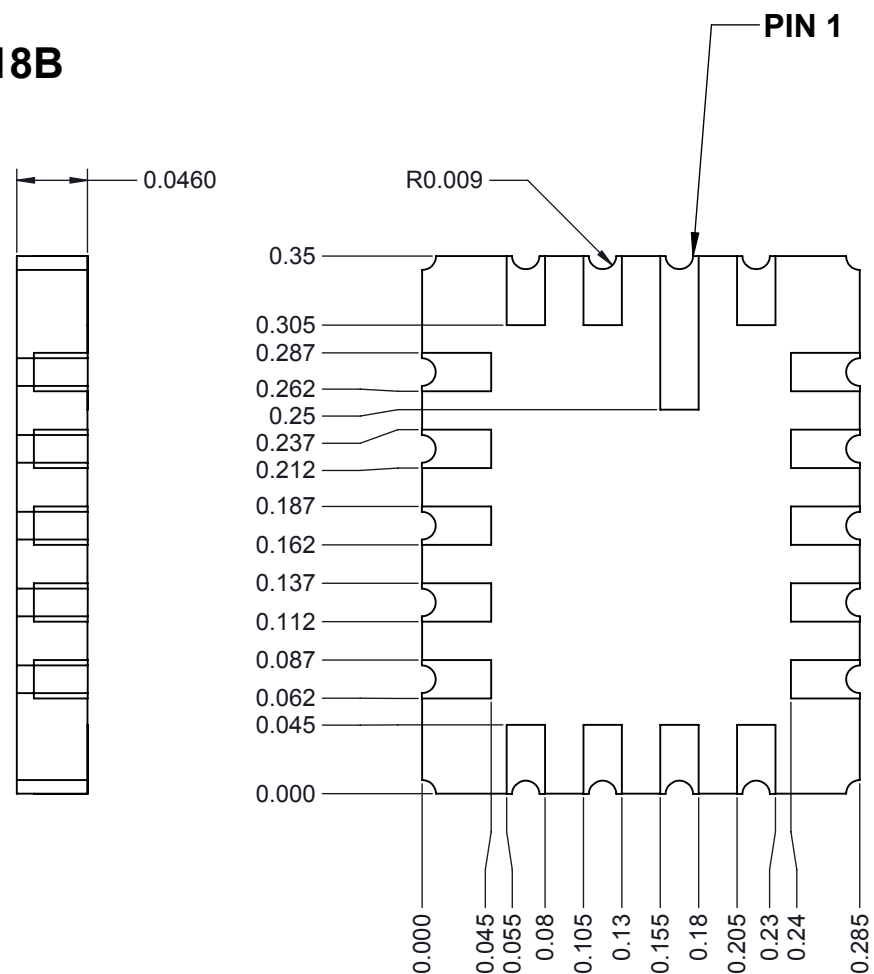
Target PCB Recommendations
 Total thickness: 1.5mm min.
 Plating: Gold or Solder finish

Description: Recommended PCB layout


Primary dimension units are millimeters, Secondary dimension units are [inches], Weight is in grams.

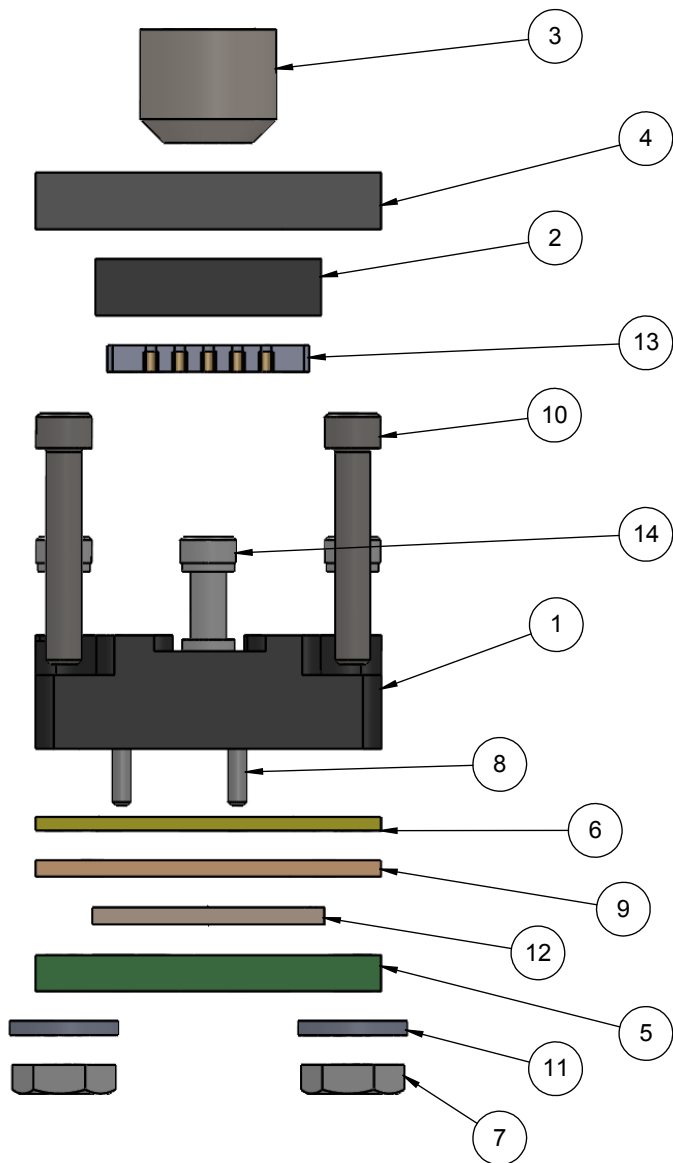
Tolerances: Hole diameters $\pm 0.0254\text{mm}$ [$\pm 0.001"$], Pitches (from true position) $\pm 0.0762\text{mm}$ [$\pm 0.003"$], substrate thickness tolerance $\pm 10\%$, all other tolerances $\pm 0.127\text{mm}$ [$\pm 0.005"$] unless stated otherwise. Materials and specifications are subject to change without notice.

| | | | | |
|---|--|---|---|----------------------|
| SG-LCC-6000 Drawing  ©2015 Ironwood Electronics, Inc. Tele: (800) 404-0204 www.ironwoodelectronics.com | Material: N/A Finish: N/A Weight: 6.55 | STATUS: Released ENG: S. Faiz FILE: SG-LCC-6000 Dwg | SHEET: 2 OF 4 DRAWN BY: D. Hauer DATE: 2/5/2013 | REV. B SCALE: 6:1 |
|---|--|---|---|----------------------|



Primary dimension units are millimeters, Secondary dimension units are [inches], Weight is in grams.

| | | | | |
|--|--|-----------------------|--------------------|------------|
|  SG-LCC-6000 Drawing ©2015 Ironwood Electronics, Inc. Tele: (800) 404-0204 www.ironwoodelectronics.com | Material: N/A Finish: N/A Weight: 6.55 | STATUS: Released | SHEET: 3 OF 4 | REV. B |
| | | ENG: S. Faiz | DRAWN BY: D. Hauer | SCALE: 8:1 |
| | | FILE: SG-LCC-6000 Dwg | DATE: 2/5/2013 | |




| ITEM NO. | DESCRIPTION | Material |
|----------|---|------------------------|
| 1 | Socket Base | 7075-T6 Aluminum Alloy |
| 2 | Compression Plate | 7075-T6 Aluminum Alloy |
| 3 | Compression Screw M6x1 | Stainless Steel (18-8) |
| 4 | Socket Lid | 7075-T6 Aluminum Alloy |
| 5 | Target PCB | FR4 High temp |
| 6 | IC guide for LCC 0.285" x 0.350" | Torlon 4203 |
| 7 | Nut, #0-80, SS | Stainless Steel (18-8) |
| 8 | Dowel Pin, 1/32" x 3/16", SS | Chrome Stainless Steel |
| 9 | Elast Gde 10x10mm | Ultem |
| 10 | #0-80 X .375 LG, SOC HD CAP SCREW, ALLOY STL, BLK OXIDE | Alloy Steel |
| 11 | Washer, #0 x .025", Nylon | Nylon 6/6 |
| 12 | 0.75mm thick 0.1mm pitch 63 deg angled elastomer | Silicon Rubber |
| 13 | Test Chip | FR4 high temp |
| 14 | #0-80 Shoulder Screw, 0.090" thread length | Stainless Steel (303) |

Description: Socket detail

Primary dimension units are millimeters, Secondary dimension units are [inches], Weight is in grams.

Tolerances: Hole diameters $\pm 0.0254\text{mm}$ [$\pm 0.001"$], Pitches (from true position) $\pm 0.0762\text{mm}$ [$\pm 0.003"$], substrate thickness tolerance $\pm 10\%$, all other tolerances $\pm 0.127\text{mm}$ [$\pm 0.005"$] unless stated otherwise. Materials and specifications are subject to change without notice.

| Rev | Date | Initials | Description |
|-----|----------|----------|--|
| A | 02/05/13 | DH | Original |
| B | 03/30/15 | DH | Changed IC Guide materila from Ultem to Torlon |
| | | | |

| | | | | | |
|--|---|--|-----------------------|--------------------|------------|
|  | SG-LCC-6000 Drawing ©2015 Ironwood Electronics, Inc. Tele: (800) 404-0204 www.ironwoodelectronics.com | Material: N/A Finish: N/A Weight: 6.55 | STATUS: Released | SHEET: 4 OF 4 | REV. B |
| | | | ENG: S. Faiz | DRAWN BY: D. Hauer | SCALE: 3:1 |
| | | | FILE: SG-LCC-6000 Dwg | DATE: 2/5/2013 | |
| | | | | | |