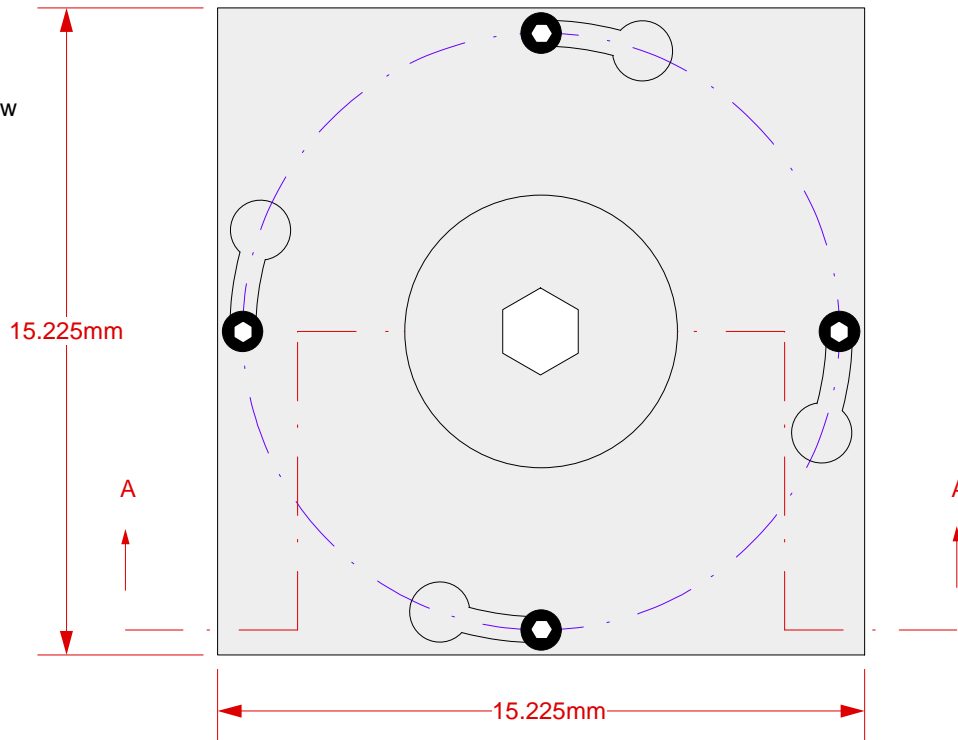


# GHz MLF Socket - Direct mount, solderless

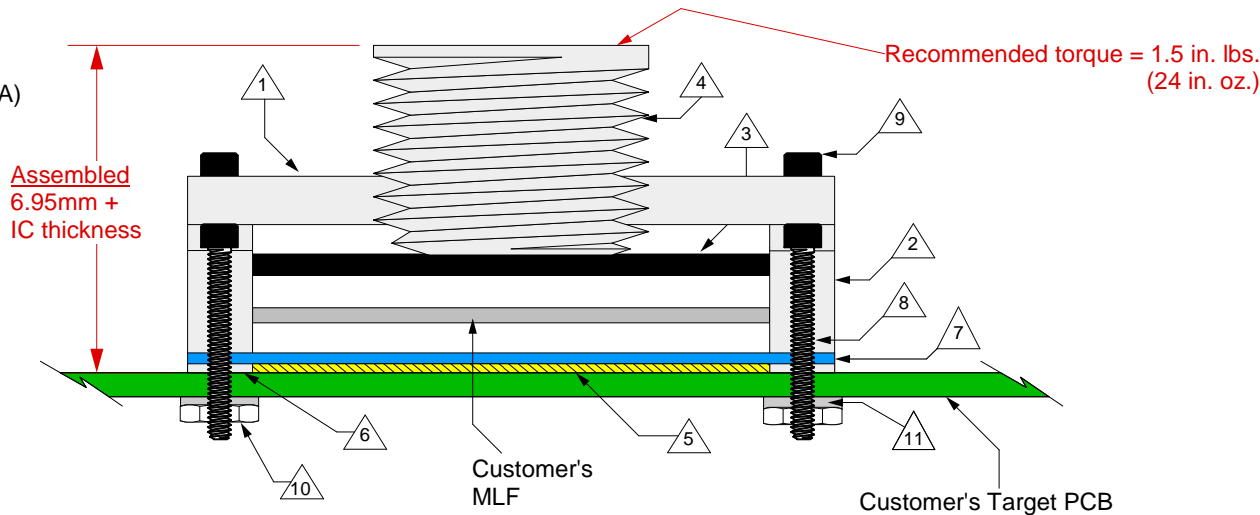
Top View



## Features

- Directly mounts to target PCB (needs tooling holes) with hardware.
- High speed, reliable Elastomer connection
- Minimum real estate required
- Compression plate distributes forces evenly
- IC guide prevents over compression of elastomer
- Easily removable swivel socket lid

Side View  
(Section AA)



- |    |                                                                                                                                             |
|----|---------------------------------------------------------------------------------------------------------------------------------------------|
| 1  | Socket Lid: Black anodized Aluminum.<br>Thickness = 2.5mm.                                                                                  |
| 2  | Socket base: Black anodized Aluminum.<br>Thickness = 3mm.                                                                                   |
| 3  | Compression Plate: Black anodized Aluminum.<br>Thickness = 1.5mm.                                                                           |
| 4  | Compression screw: Clear anodized Aluminum.<br>Thickness = 5mm, Hex socket = 3mm.                                                           |
| 5  | Elastomer: 20 micron dia gold plated brass filaments arranged symmetrically in a silicone rubber (63.5 degree angle).<br>Thickness = 0.5mm. |
| 6  | Elastomer Guide: Cirlex<br>Thickness = 0.475mm.                                                                                             |
| 7  | IC (MLF) Guide: Torlon                                                                                                                      |
| 8  | Socket base screw: Socket head cap, Alloy steel with black oxide finish, 0-80 fine thread, 9.525mm long.                                    |
| 9  | Socket lid screw: Shoulder screw, 18-8 SS, 0-80 fine thread.                                                                                |
| 10 | Socket base nut: 18-8 Stainless steel, 0-80 fine thread.                                                                                    |
| 11 | Nylon washer: 1.73mm ID; 4.78mm OD<br>0.64mm thickness.                                                                                     |

## SG-MLF-7000 Drawing

© 2007 IRONWOOD ELECTRONICS, INC.  
11351 Rupp Dr. Ste 400 Burnsville, MN 55337  
Tele: (952) 229-8200  
www.ironwoodelectronics.com

Status: Released

Scale: 3:1

Rev: J

Drawing: H. Hansen

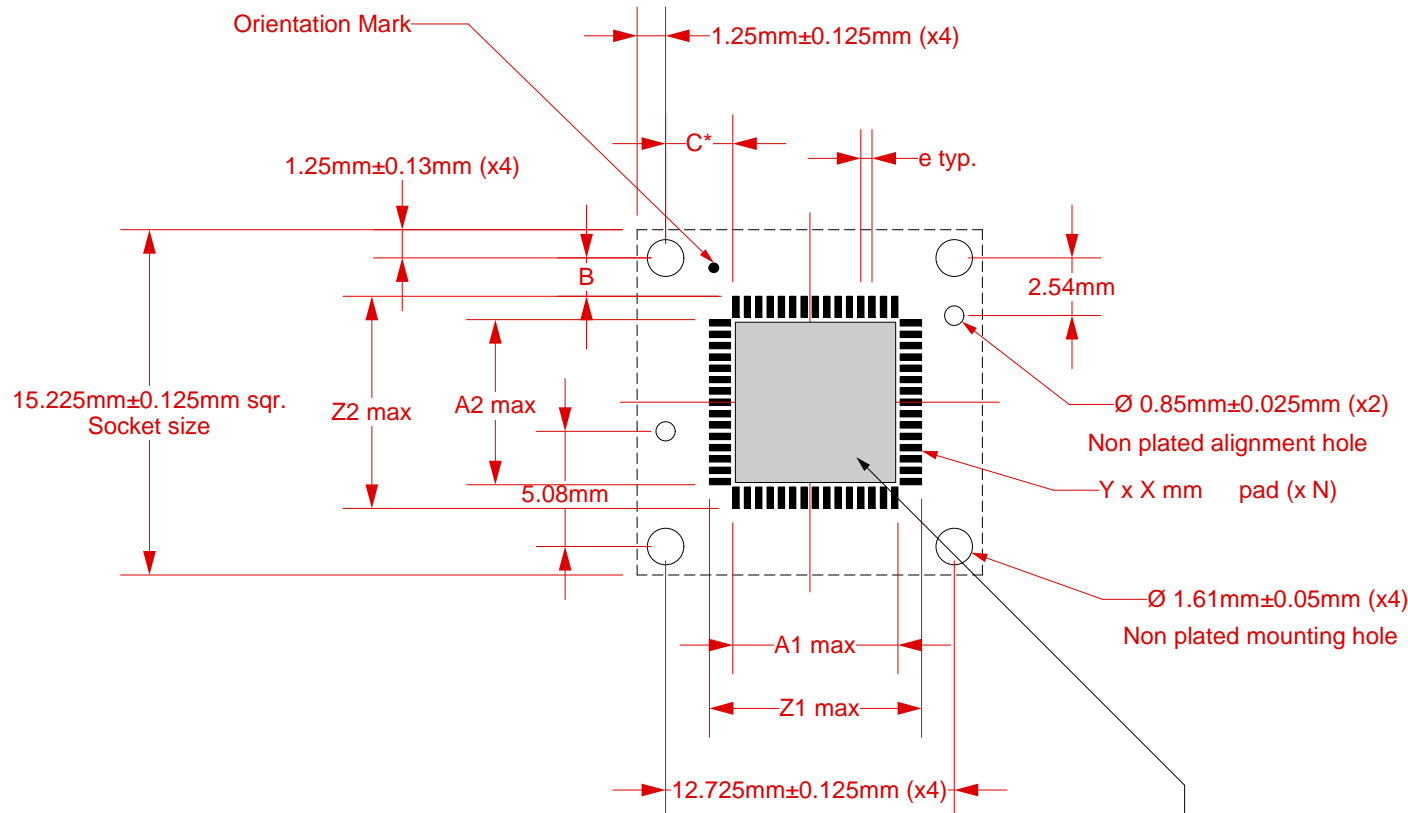
Date: 9/11/02

File: SG-MLF-7000 Dwg.mcd

Modified: 05/06/14, DH

All tolerances:  $\pm 0.125$ mm (unless stated otherwise). Materials and specifications are subject to change without notice.

**\*Note: MLF pattern is not symmetrical with respect to the mounting holes. It is offset 0.25mm to the right of center.**




**Target PCB Recommendations**

- Total thickness: 1.6mm min.
- Plating: Gold or Solder finish
- PCB Pad height: Same or higher than solder mask

NOTE: Steel backing plate may be required based on end user's application

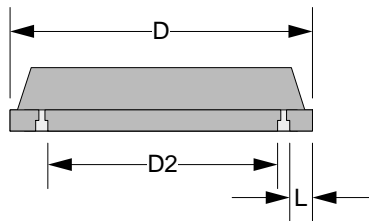
\*\*\*\* To effectively conduct heat away from the package a thermal pad is recommended with vias spaced 1.0 to 1.2 mm pitch and a diameter of 0.3 to 0.33 mm. Ideally 1 via for every 3 leads has been shown to work well.

	<b>SG-MLF-7000 Drawing</b>	Status: Released	Scale: 3:1	Rev: J
	© 2007 IRONWOOD ELECTRONICS, INC. 11351 Rupp Dr. Ste 400 Burnsville, MN 55337 Tele: (952) 229-8200 www.ironwoodelectronics.com	Drawing: H. Hansen		Date: 9/11/02
		File: SG-MLF-7000 Dwg.mcd	Modified: 05/06/14, DH	

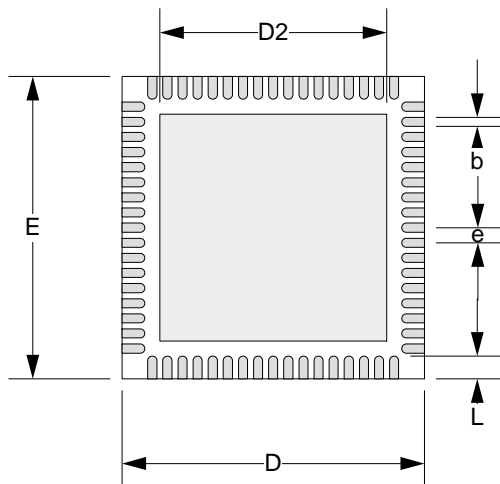
Package Code	C	B	Z1max	A1max	Z2max	A2 max	e	Xmax	Yref	N	Thermal Pad Recommendations
MLF44A	2.4	1.18	10.36	8.42	10.36	8.42	0.8	0.44	1.06	44	7.84 x 7.84
MLF52A	2.53	1.18	10.36	8.17	10.36	8.17	0.65	0.37	1	52	6.84 x 6.84
MLF64B	2.72	1.18	10.36	7.78	10.36	7.78	0.5	0.28	0.94	64	8.08 x 8.08
MLF68A	2.47	1.18	10.36	8.28	10.36	8.28	0.5	0.28	0.94	68	8.08 x 8.08
MLF72A	2.22	1.18	10.36	8.78	10.36	8.78	0.5	0.28	0.69	72	8.58 x 8.58
MLF84A	2.49	1.18	10.36	8.25	10.36	8.25	0.4	0.25	0.81	84	8.34 x 8.34
MLF88A	2.29	1.18	10.36	8.65	10.36	8.65	0.4	0.25	0.76	88	8.2 x 8.2


Recommended PCB Layout Tolerances:  $\pm 0.025\text{mm}$  unless stated otherwise.

All dimensions are in mm.



Package Code	e	D min	D max	E min	E max	b min	b max	L min	L max	D2	N
MLF44A	0.8	9.85	10.15	9.85	10.15	0.28	0.4	0.5	0.75	7.94	44
MLF52A	0.65	9.85	10.15	9.85	10.15	0.23	0.35	0.5	0.75	8.07	52
MLF64B	0.5	9.85	10.15	9.85	10.15	0.21	0.25	0.45	0.55	7.05	64
MLF68A	0.5	9.85	10.15	9.85	10.15	0.18	0.3	0.5	0.75	8.18	68
MLF72A	0.5	9.85	10.15	9.85	10.15	0.18	0.3	0.3	0.5	8.68	72
MLF84A	0.4	9.85	10.15	9.85	10.15	0.16	0.27	0.3	0.5	8.44	84
MLF88A	0.4	9.85	10.15	9.85	10.15	0.15	0.25	0.35	0.45	8.2	88



 <p>© 2007 IRONWOOD ELECTRONICS, INC. 11351 Rupp Dr. Ste 400 Burnsville, MN 55337 Tele: (952) 229-8200 www.ironwoodelectronics.com</p>	<b>SG-MLF-7000 Drawing</b>		Status: Released	Scale: 3:1	Rev: J
			Drawing: H. Hansen		Date: 9/11/02
			File: SG-MLF-7000 Dwg.mcd		Modified: 05/06/14, DH