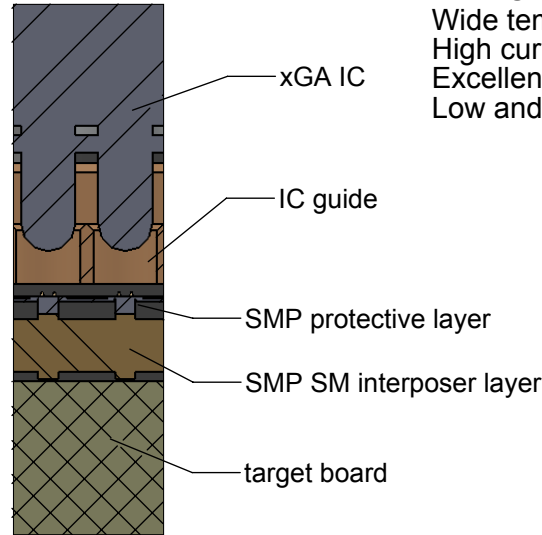
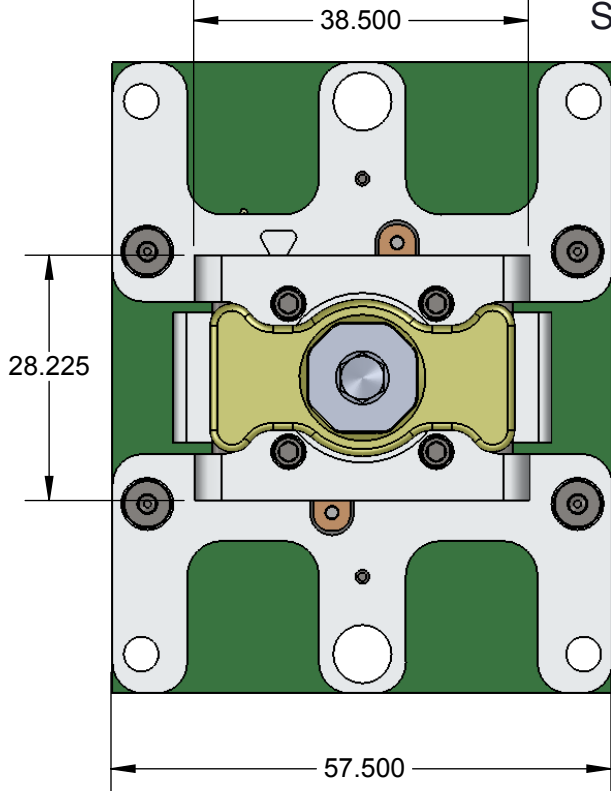
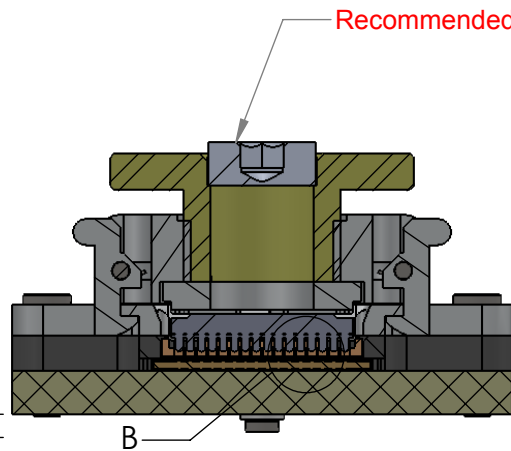
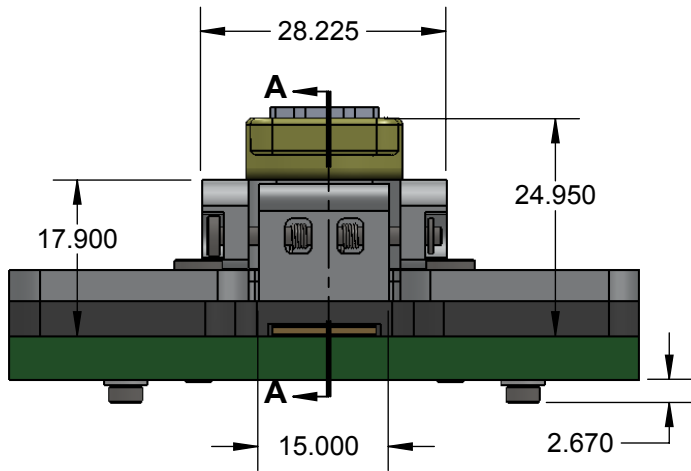


SMP-CGA DIRECT MOUNT, SOLDERLESS SOCKET FOR BURN-IN AND TEST APPLICATIONS

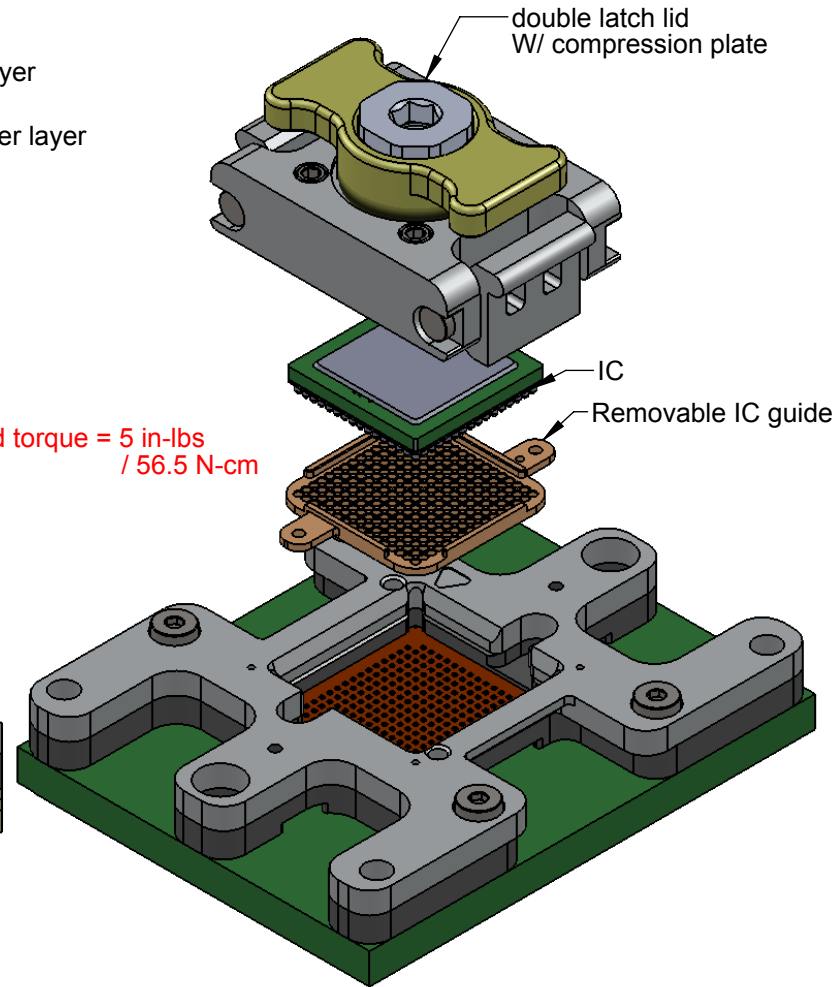


**DETAIL B
SCALE 8 : 1**

- FEATURES:**
 Wide temperature range (-55C to +155C)
 High current capability (up to 4A)
 Excellent signal integrity at high frequencies
 Low and stable contact resistance for reliable production yield




SECTION A-A

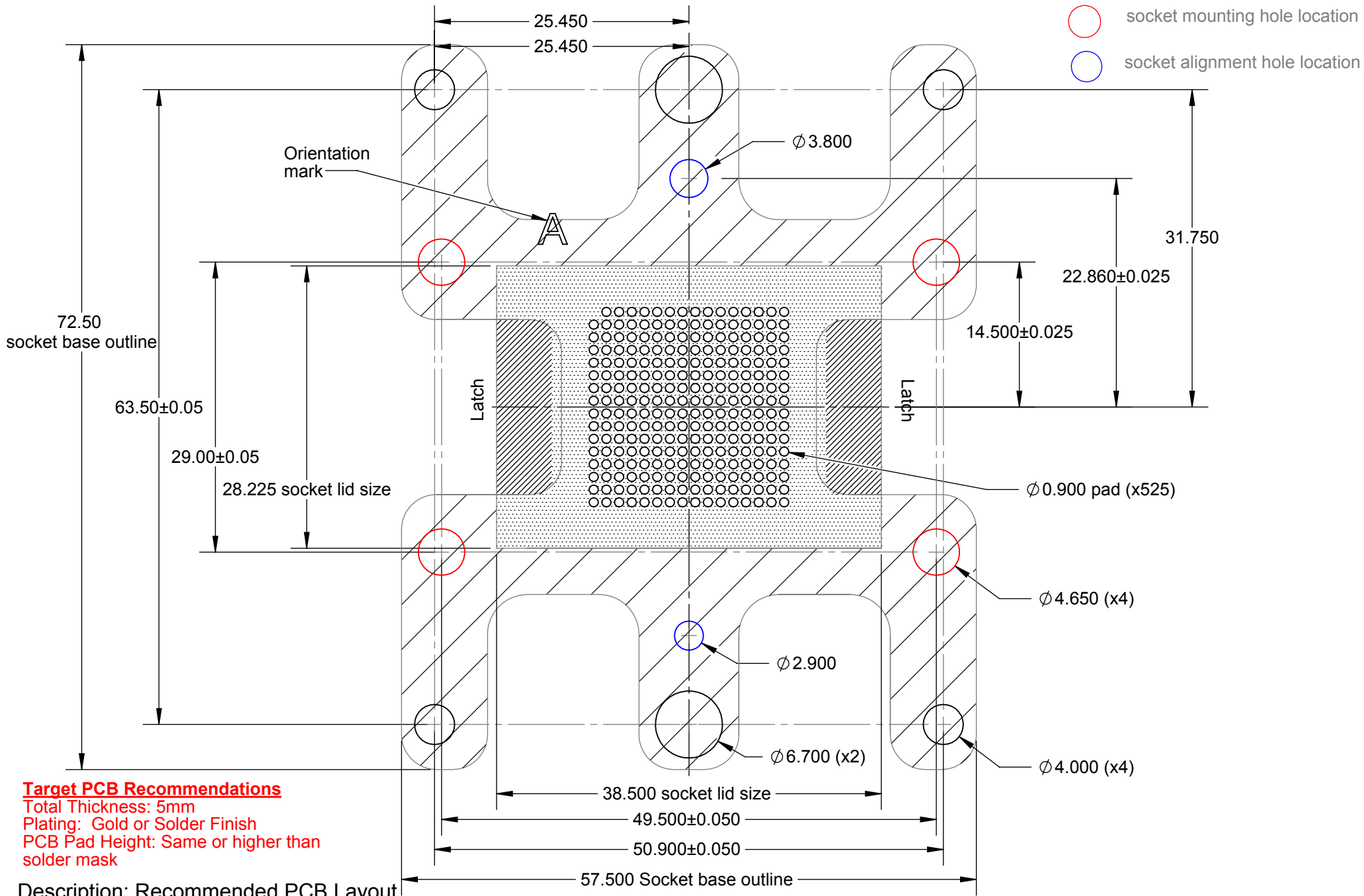


Description: Double latch snap lid SMP xGA255 21x21mm IC 16x16 array 1.27mm pitch

Primary dimension units are millimeters, Secondary dimension units are [inches], Weight is in grams.


Tolerances: Hole diameters $\pm 0.03\text{mm}$ [$\pm 0.001"$], Pitches (from true position) $\pm 0.025\text{mm}$ [$\pm 0.001"$], substrate thickness tolerance $\pm 10\%$, all other tolerances $\pm 0.13\text{mm}$ [$\pm 0.005"$] unless stated otherwise. Materials and specifications are subject to change without notice.

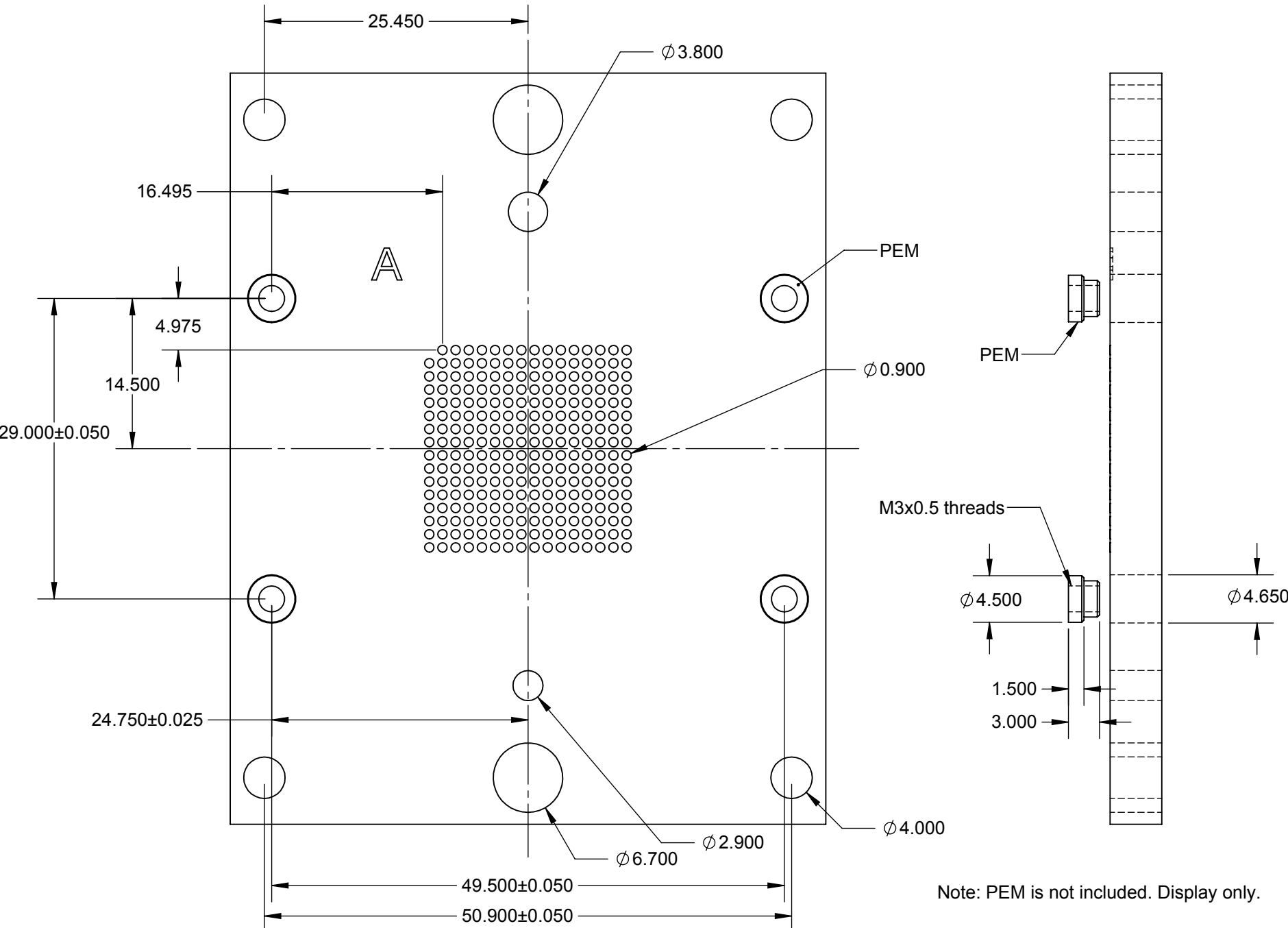
 SMP-CGA-3001 Drawing Ironwood Electronics, Inc. Tele: (800) 404-0204 www.ironwoodelectronics.com	Material: N/A Finish: N/A Weight: 94.65	STATUS: Released ENG: S. Huang FILE: SMP-CGA-3001 Dwg	SHEET: 1 OF 9 DRAWN BY: M. Raske DATE: 06/10/2015	REV. A SCALE: 1.15:1



Primary dimension units are millimeters, Secondary dimension units are [inches], Weight is in grams.

Tolerances: Hole diameters $\pm 0.0254\text{mm}$ [$\pm 0.001"$], Pitches (from true position) $\pm 0.0762\text{mm}$ [$\pm 0.003"$], substrate thickness tolerance $\pm 10\%$, all other tolerances $\pm 0.127\text{mm}$ [$\pm 0.005"$] unless stated otherwise. Materials and specifications are subject to change without notice.


 SMP-CGA-3001 Drawing Ironwood Electronics, Inc. Tele: (800) 404-0204 www.ironwoodelectronics.com	Material: N/A Finish: N/A Weight: 94.65	STATUS: Released ENG: S. Huang FILE: SMP-CGA-3001 Dwg	SHEET: 2 OF 9 DRAWN BY: M. Raske DATE: 06/10/2015	REV. A SCALE: 2:1



Description: Recommended PCB Layout pemnut

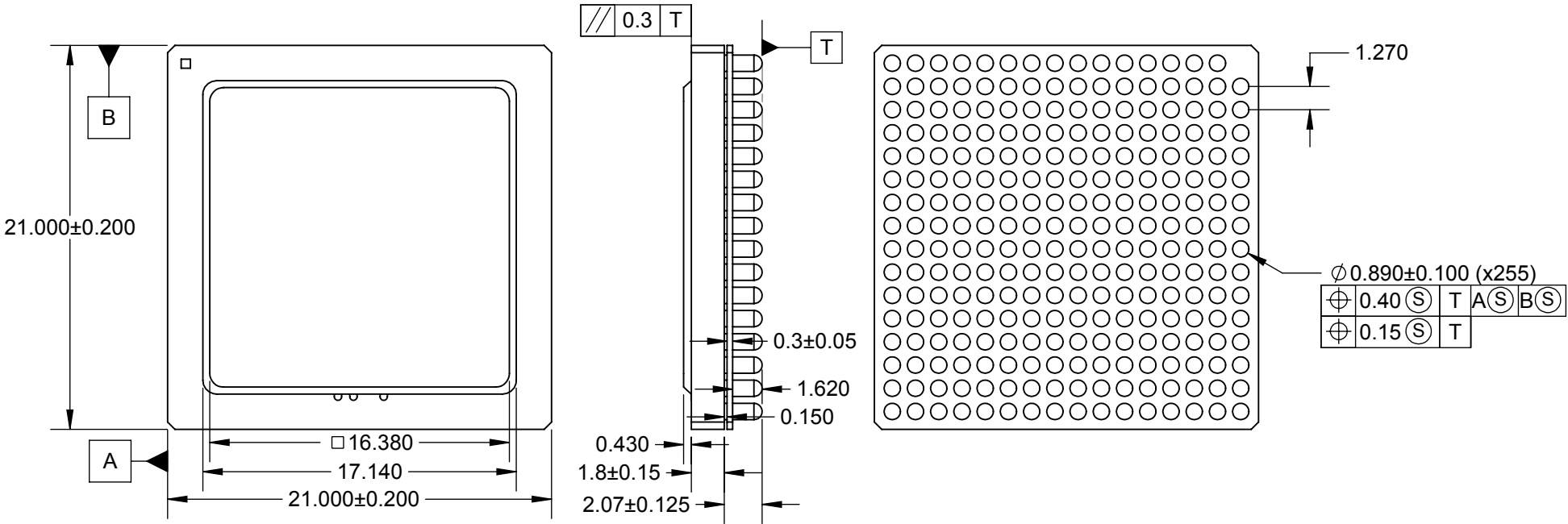
Primary dimension units are millimeters, Secondary dimension units are [inches], Weight is in grams.

Tolerances: Hole diameters ±0.0254mm [±0.001"]. Pitches (from true position) ±0.0762mm [±0.003"], substrate thickness tolerance ±10%, all other tolerances ±0.127mm [±0.005"] unless stated otherwise. Materials and specifications are subject to change without notice.

 <p>SMP-CGA-3001 Drawing ©2015 Ironwood Electronics, Inc. Tele: (800) 404-0204 www.ironwoodelectronics.com</p>	<p>Material: N/A Finish: N/A Weight: 94.65</p>	<p>STATUS: Released ENG: S. Huang FILE: SMP-CGA-3001 Dwg</p>	<p>SHEET: 3 OF 9 DRAWN BY: M. Raske DATE: 06/10/2015</p>	<p>REV. A SCALE: 2:1</p>

DIM	MIN	NOM	MAX
A	4.10	4.44	4.77
A1	2.10	2.21	2.32
A2	1.62	1.80	1.98
A3	0.38	0.43	0.48


Package: CiGA255

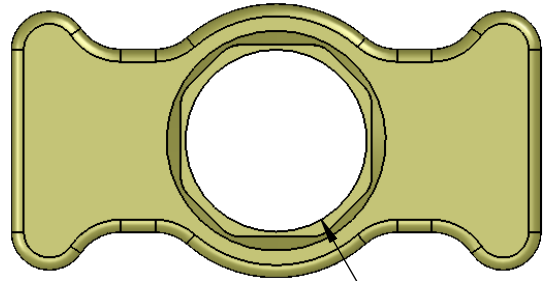
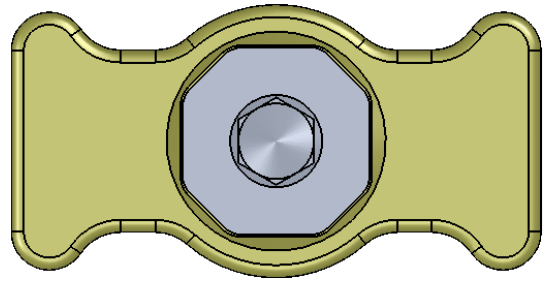


Description: Compatible xGA

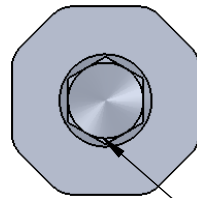
Primary dimension units are millimeters, Secondary dimension units are [inches], Weight is in grams.
 Tolerances: Hole diameters $\pm 0.03\text{mm}$ [± 0.001 "], Pitches (from true position) $\pm 0.025\text{mm}$ [± 0.001 "], substrate thickness tolerance $\pm 10\%$, all other tolerances $\pm 0.13\text{mm}$ [± 0.005 " unless stated otherwise. Materials and specifications are subject to change without notice.

1. Black Alumina Package.
2. Plating (Electroless):
 Ni: 1.27~8.89 Micron.
 Au on top surface: 1.5 Micron Min.
3. Au plating thickness on index mark1 is not required except Ni plating edposes. .
4. Lid material: Kovar Lid; Finishing : Gold plating over Nickel.
5. Soldquik columns material Pb80SN20 Core; Copper Ribbon; Sn 63PB37 Solder Fillet.

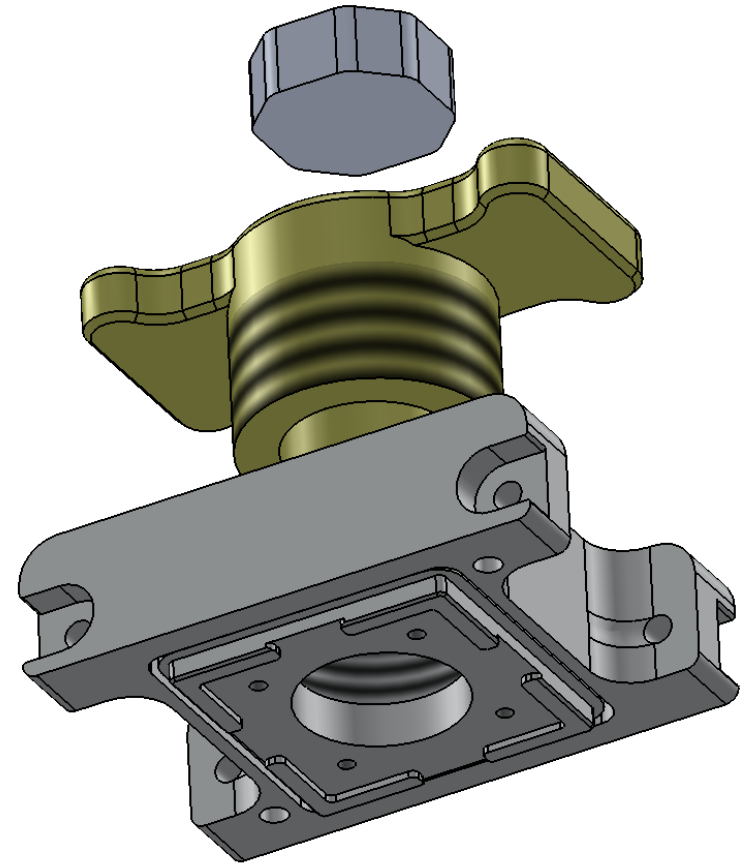
 <p>SMP-CGA-3001 Drawing Ironwood Electronics, Inc. Tele: (800) 404-0204 www.ironwoodelectronics.com</p>	<p>Material: N/A Finish: N/A Weight: 94.65</p>	STATUS: Released	SHEET: 4 OF 9	REV. A
		ENG: S. Huang	DRAWN BY: M. Raske	SCALE: 3:1
		FILE: SMP-CGA-3001 Dwg	DATE: 06/10/2015	



Ø 12.000




5mm hex key

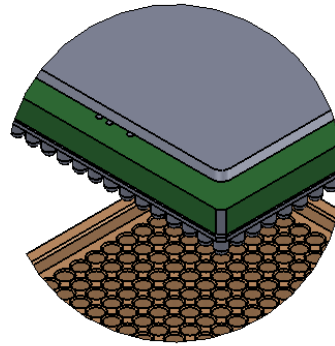
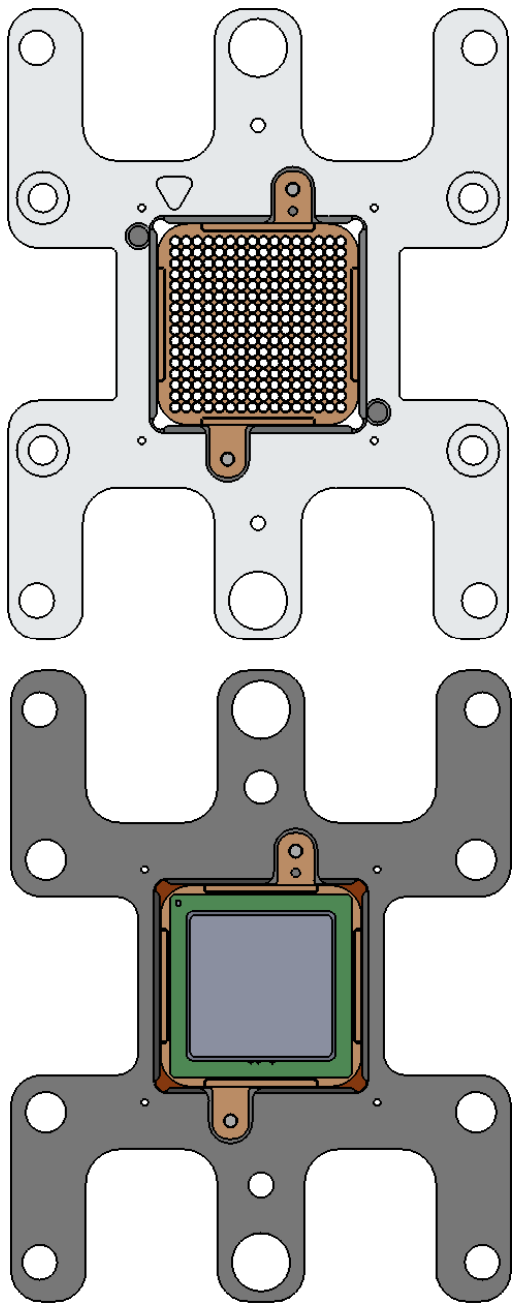


Description: comp screw, comp plt detail

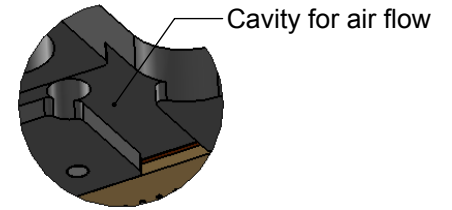
Primary dimension units are millimeters, Secondary dimension units are [inches], Weight is in grams.

Tolerances: Hole diameters ±0.0254mm [±0.001"], Pitches (from true position) ±0.0762mm [±0.003"], substrate thickness tolerance ±10%, all other tolerances ±0.127mm [±0.005"] unless stated otherwise. Materials and specifications are subject to change without notice.

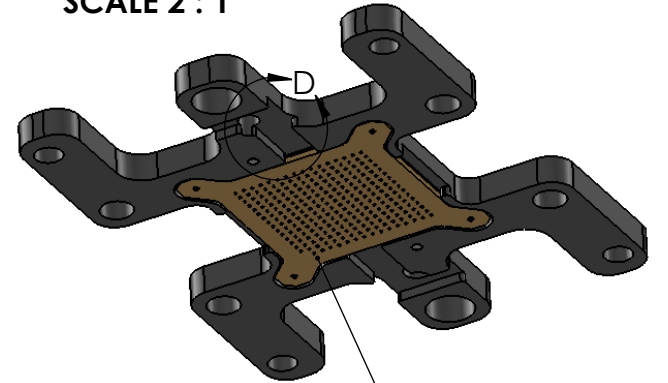
	SMP-CGA-3001 Drawing ©2015 Ironwood Electronics, Inc. Tele: (800) 404-0204 www.ironwoodelectronics.com	Material: N/A Finish: N/A Weight: 94.65	STATUS: Released ENG: S. Huang FILE: SMP-CGA-3001 Dwg	SHEET: 5 OF 9 DRAWN BY: M. Raske DATE: 06/10/2015	REV. A SCALE: 2:1



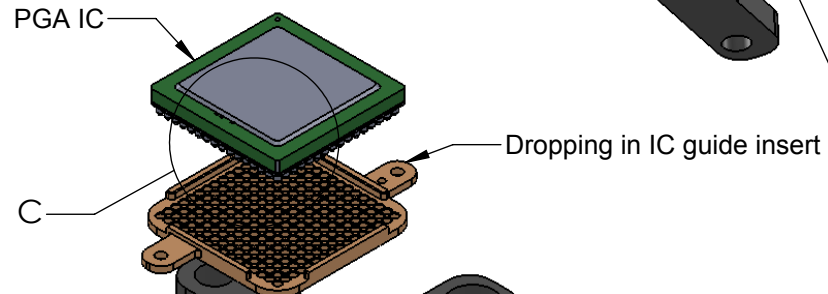
DETAIL C
SCALE 2.3 : 1



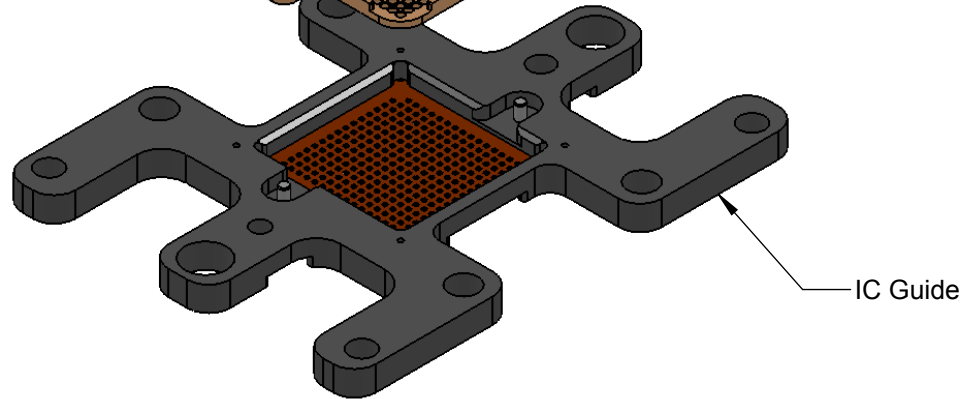
DETAIL D
SCALE 2 : 1



SMP/SM interposer



Dropping in IC guide insert




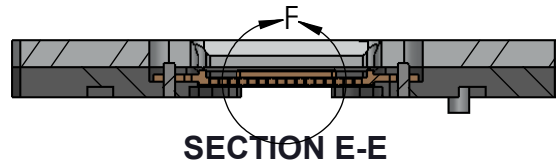
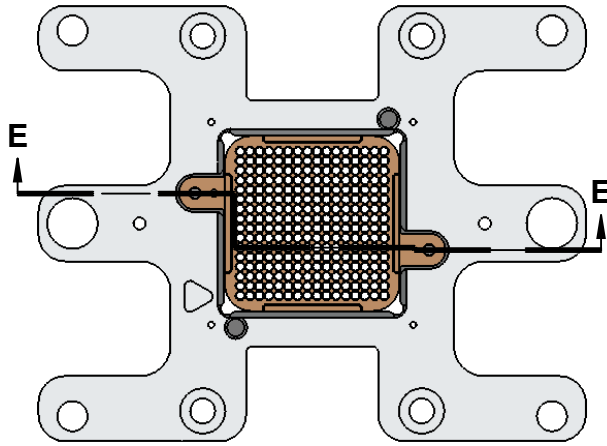
IC Guide

Description: IC guide overview

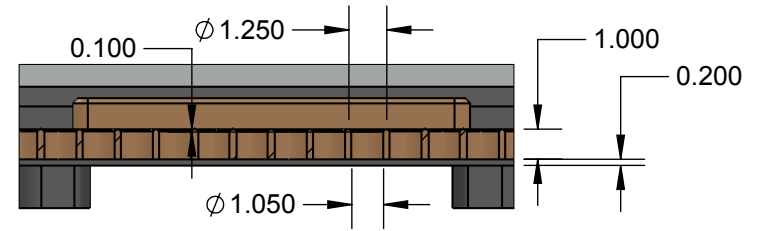
Primary dimension units are millimeters, Secondary dimension units are [inches], Weight is in grams.

Tolerances: Hole diameters $\pm 0.03\text{mm}$ [$\pm 0.001"$], Pitches (from true position) $\pm 0.025\text{mm}$ [$\pm 0.001"$], substrate thickness tolerance $\pm 10\%$, all other tolerances $\pm 0.13\text{mm}$ [$\pm 0.005"$] unless stated otherwise. Materials and specifications are subject to change without notice.

 <p>SMP-CGA-3001 Drawing Ironwood Electronics, Inc. Tele: (800) 404-0204 www.ironwoodelectronics.com</p>	<p>Material: N/A Finish: N/A Weight: 94.65</p>	<p>STATUS: Released ENG: S. Huang FILE: SMP-CGA-3001 Dwg</p>	<p>SHEET: 6 OF 9 DRAWN BY: M. Raske DATE: 06/10/2015</p>	<p>REV. A SCALE: 1.15:1</p>



CiCGA package




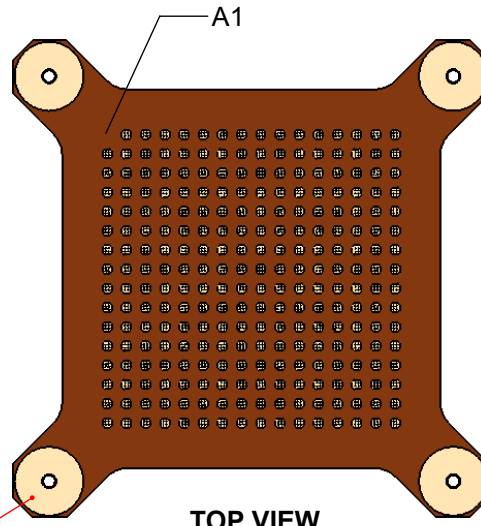
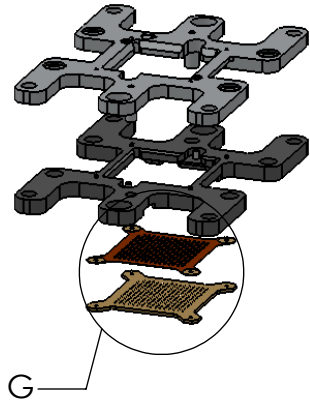
DETAIL F
SCALE 4 : 1

Description: IC guide detail

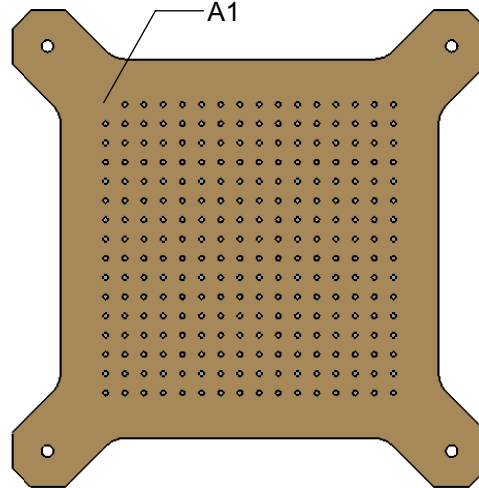
Primary dimension units are millimeters, Secondary dimension units are [inches], Weight is in grams.

Tolerances: Hole diameters $\pm 0.0254\text{mm}$ [$\pm 0.001"$], Pitches (from true position) $\pm 0.0762\text{mm}$ [$\pm 0.003"$], substrate thickness tolerance $\pm 10\%$, all other tolerances $\pm 0.127\text{mm}$ [$\pm 0.005"$] unless stated otherwise. Materials and specifications are subject to change without notice.

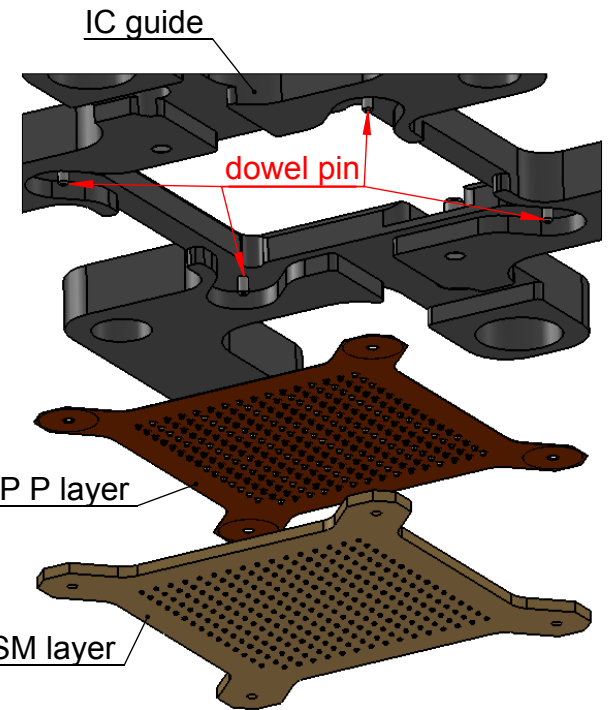
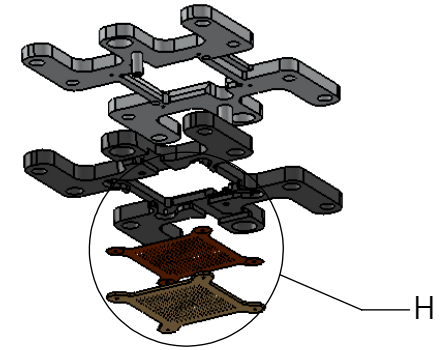
 <p>SMP-CGA-3001 Drawing ©2015 Ironwood Electronics, Inc. Tele: (800) 404-0204 www.ironwoodelectronics.com</p>	<p>Material: N/A Finish: N/A Weight: 94.65</p>	<p>STATUS: Released</p>	<p>SHEET: 7 OF 9</p>	<p>REV. A</p>
	<p>ENG: S. Huang</p>	<p>DRAWN BY: M. Raske</p>	<p>SCALE: 1:1</p>	
	<p>FILE: SMP-CGA-3001 Dwg</p>	<p>DATE: 06/10/2015</p>		



TOP VIEW
SMP P layer



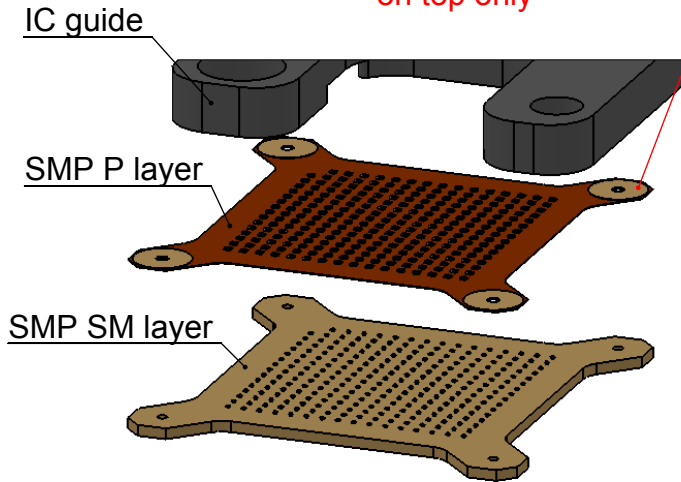
TOP VIEW
SMP SM layer



DETAIL H
SCALE 1.75 : 1

BOTTOM ISO VIEW

Gold plated washer
on top only



DETAIL G
SCALE 1.75 : 1


TOP ISO VIEW

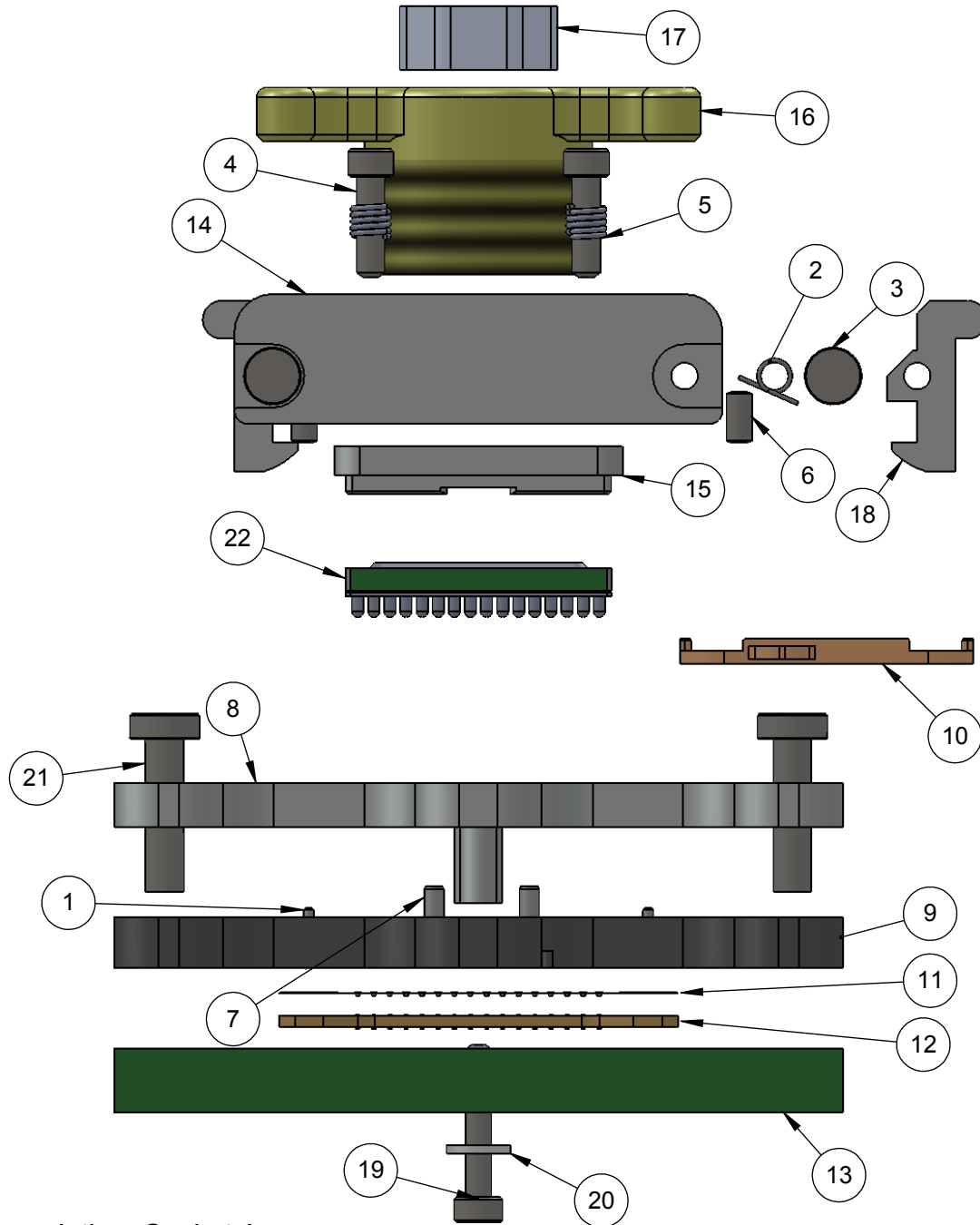
Note: SMP P layer should place and align onto dowel pin
as gold plated washer on the top

Description: SMP set assembly instruction

Primary dimension units are millimeters, Secondary dimension units are [inches], Weight is in grams.

Tolerances: Hole diameters $\pm 0.0254\text{mm}$ [$\pm 0.001"$]. Pitches (from true position) $\pm 0.0762\text{mm}$ [$\pm 0.003"$], substrate thickness tolerance $\pm 10\%$, all other tolerances $\pm 0.127\text{mm}$ [$\pm 0.005"$] unless stated otherwise. Materials and specifications are subject to change without notice.

	SMP-CGA-3001 Drawing ©2015 Ironwood Electronics, Inc. Tele: (800) 404-0204 www.ironwoodelectronics.com	Material: N/A Finish: N/A Weight: 94.65	STATUS: Released ENG: S. Huang FILE: SMP-CGA-3001 Dwg	SHEET: 8 OF 9 DRAWN BY: M. Raske DATE: 06/10/2015	REV. A SCALE: 1:2
--	--	---	---	---	----------------------




ITEM NO.	Description	Material
1	Dowel Pin, 1/32" x 3/16", SS	Chrome Stainless Steel
2	Torsion Spring, 180 0.109" OD, Ccw/Rh	Steel Music Wire
3	Hinge Pin and Snap Ring, 2mm OD, 24mm long, SS	Stainless Steel (ferritic)
4	Cap, socket head 2-56 5/16" 18-8 Stainless Steel	Stainless Steel (18-8)
5	Zinc-Plated Steel precision compression spring 125"OD 0.25" length 0.016" wire diameter	Material <not specified>
6	M2 Dowel Pin 4mm SS	Stainless Steel (18-8)
7	Dowel Pin, 1.5mm x 4mm, SS	Chrome Stainless Steel
8	Socket Base 23mm, double latch	7075-T6 Aluminum Alloy
9	SMP socket IC Guide 21x21mm IC	Torlon 4203
10	Dropping in IC guide insert 1.27mm pitch xGA255	Semitron MDS 100
11	SMP protective layer xGA255 1.27mm pitch 16x16 array	Material <not specified>
12	SMP SM elastomer xGA255 1.27mm pitch 16x16 array	SM elastomer
13	PCB for xGA255, 21x21mm 16x16 array .127mm pitch	N/A
14	Snap double latch socket lid for up to 21mm IC	7075-T6 Aluminum Alloy
15	Compression Plate 21mm IC	7075-T6 Aluminum Alloy
16	Compression Screw M18 w/handle	7075-T6 Aluminum Alloy
17	Compression Screw Hex key block	7075-T6 Aluminum Alloy
18	Clamshell Latch Snap Lid Socket	7075-T6 Alumium Alloy
19	Cap, socket head, M2x0.4x12mm 18-8 Stainless Steel	Stainless Steel (18-8)
20	M2 nylon flat washer	Nylon 6/6
21	Screw, M3 x 12mm, Low Head Cap, SS	18-8 Stainless Steel
22	Test Chip xGA255, 21x21mm 1.27mm pitch 16x16 array	Material <not specified>

Description: Socket Assem

Primary dimension units are millimeters, Secondary dimension units are [inches], Weight is in grams.

Tolerances: Hole diameters $\pm 0.0254\text{mm}$ [$\pm 0.001"$], Pitches (from true position) $\pm 0.0762\text{mm}$ [$\pm 0.003"$], substrate thickness tolerance $\pm 10\%$, all other tolerances $\pm 0.127\text{mm}$ [$\pm 0.005"$] unless stated otherwise. Materials and specifications are subject to change without notice.

 SMP-CGA-3001 Drawing ©2015 Ironwood Electronics, Inc. Tele: (800) 404-0204 www.ironwoodelectronics.com	Material: N/A Finish: N/A Weight: 94.65	STATUS: Released ENG: S. Huang FILE: SMP-CGA-3001 Dwg	SHEET: 9 OF 9 DRAWN BY: M. Raske DATE: 06/10/2015	REV. A SCALE: 1.85:1