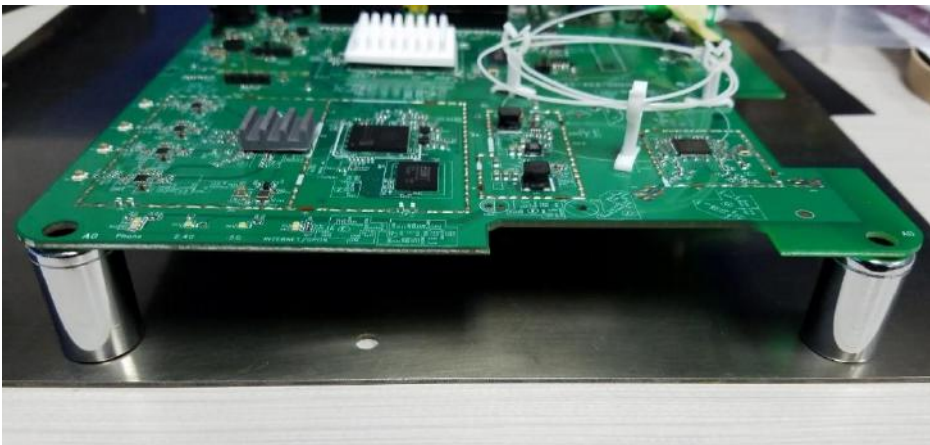


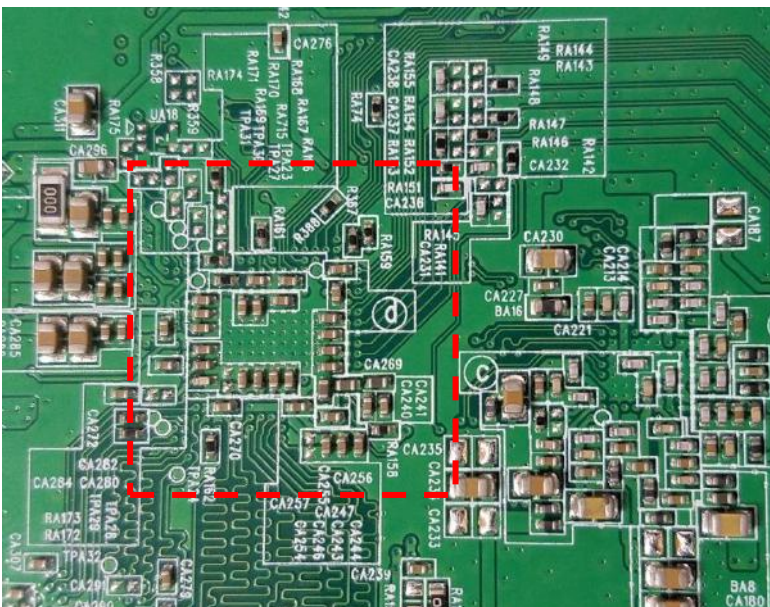


Large Grypper PCB Support

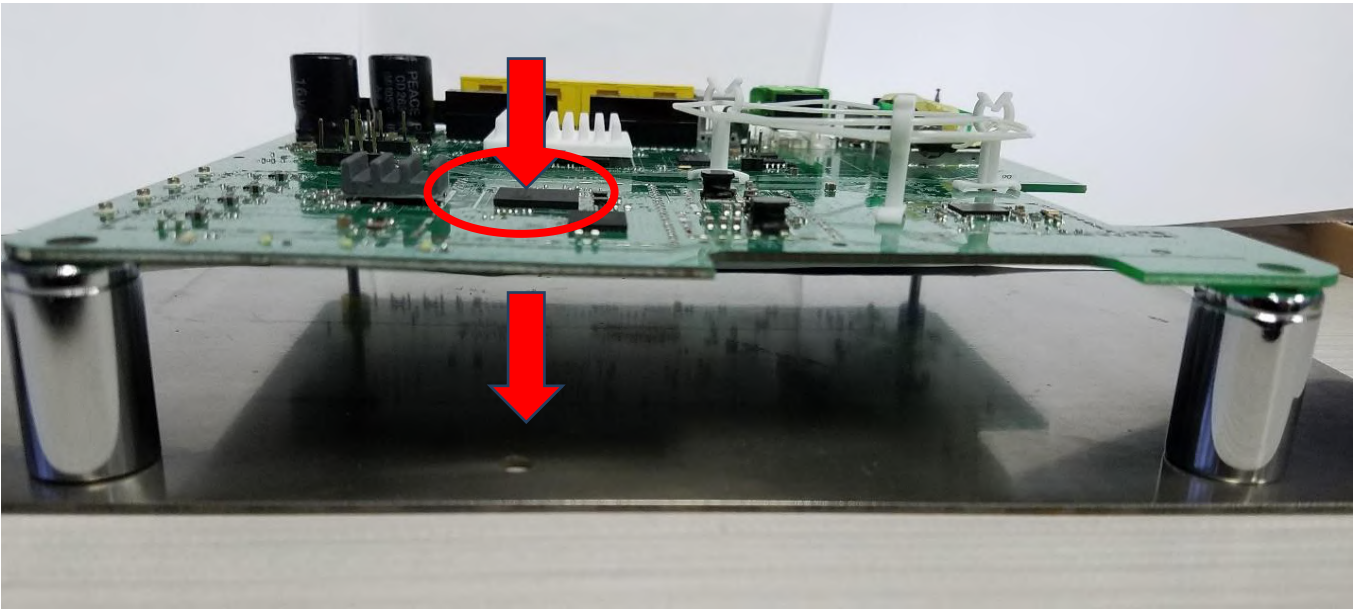
The following show how important supporting the PCB for larger I/O Grypper application to ensure the device is properly inserted into the Grypper Socket.



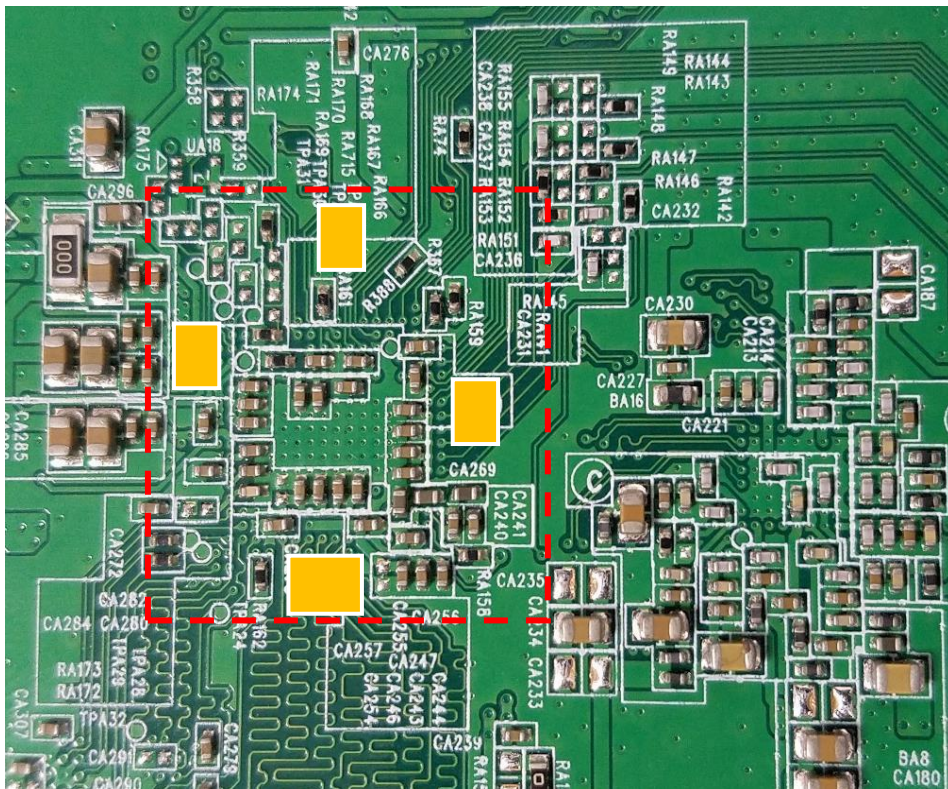
The above is a typical fixture. PCBs typically have components on the bottom side so standoffs are used to lift the board above the components.



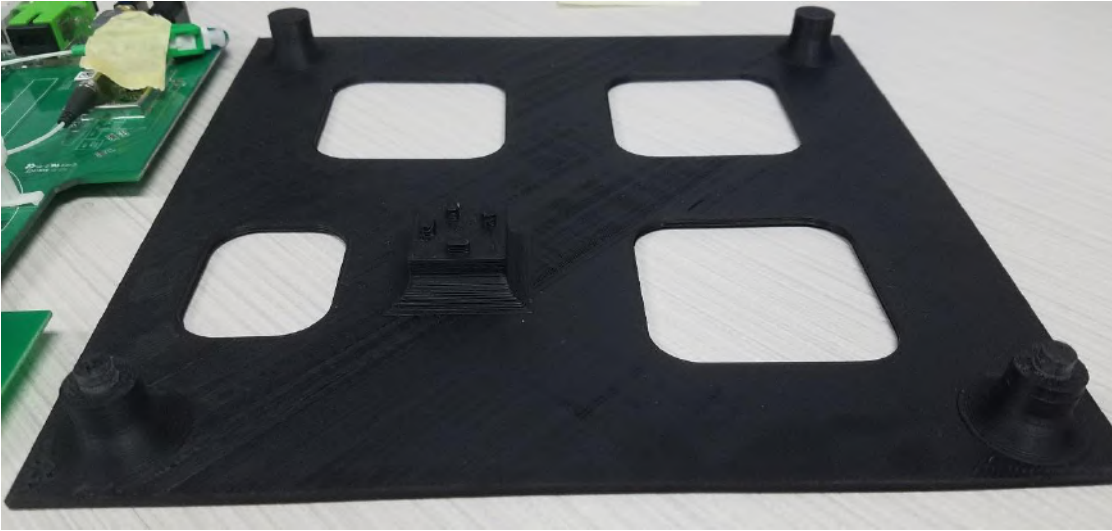
Bottom side of board at target area - Red outline



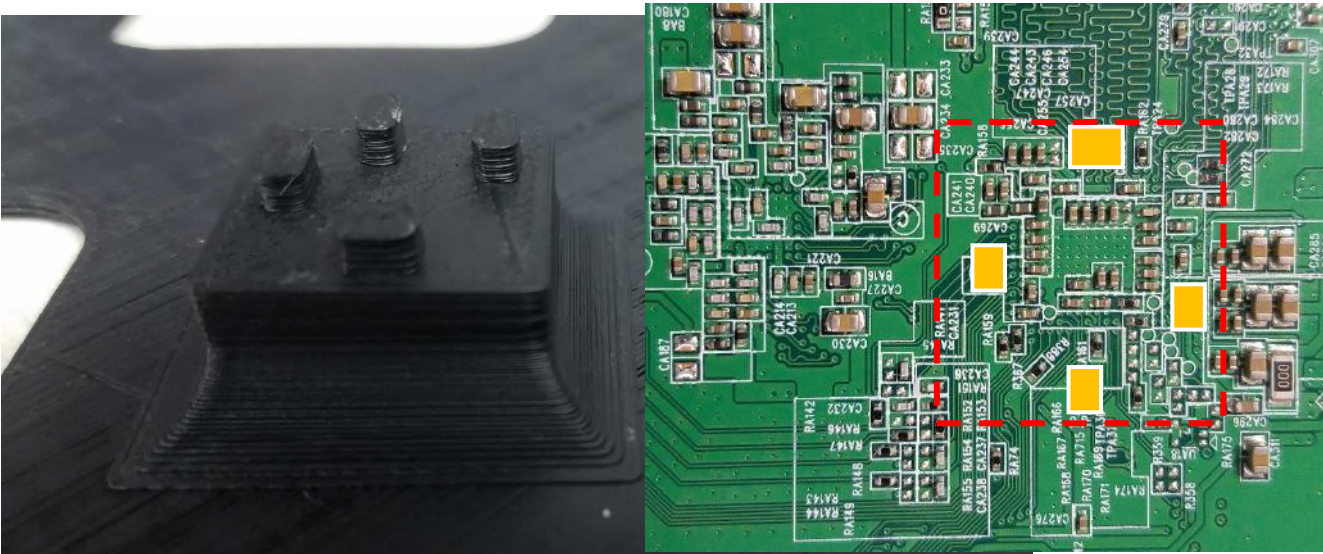
The underside of the board is supported to hold the board up but there is typically no support under the target area where the Grypper socket may be used. With no support, the board will easily flex.



Typically, there are areas within the target that can be supported.



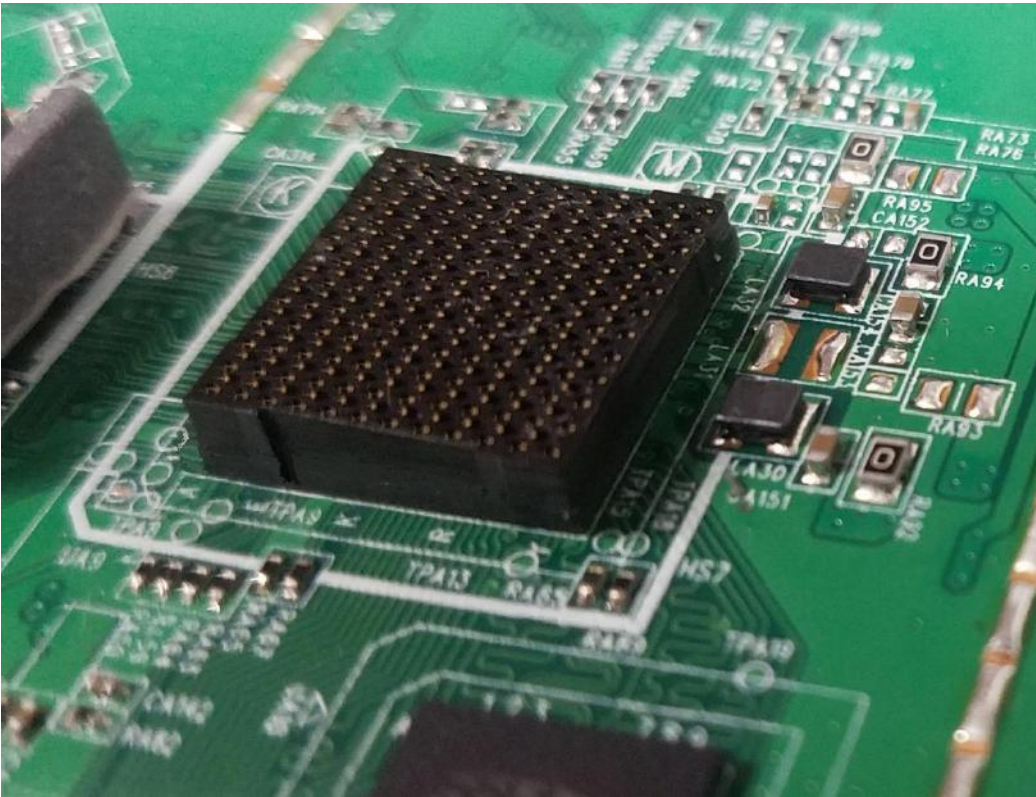
Ironwood can design and build a support fixture with a pedestal under the target area.



The pedestal has the small areas where the PCB is clear of components (Yellow areas on PCB).



Other Designs – Stand-alone Support pedestal – This design had holes that allowed the standalone pedestal to aligned and be mounted directly to the test board



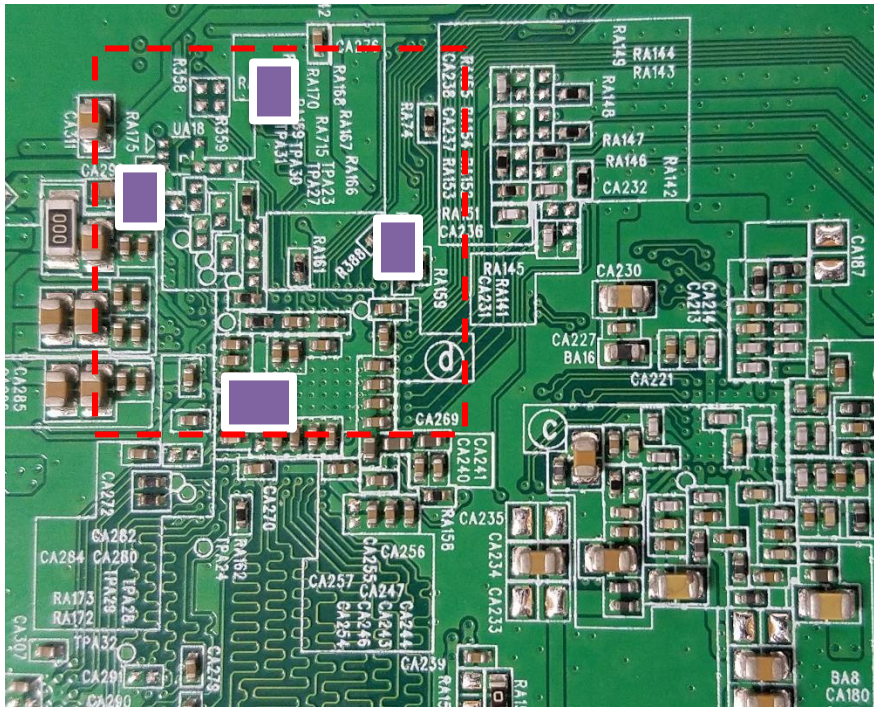
Grypper Socket installed on the PCB



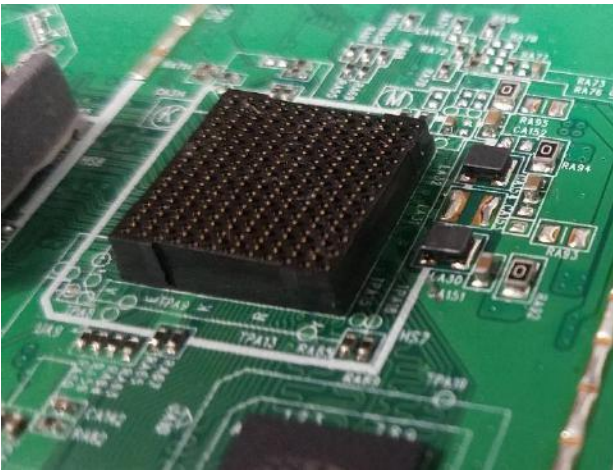
PCB placed on New Test Fixture with supports



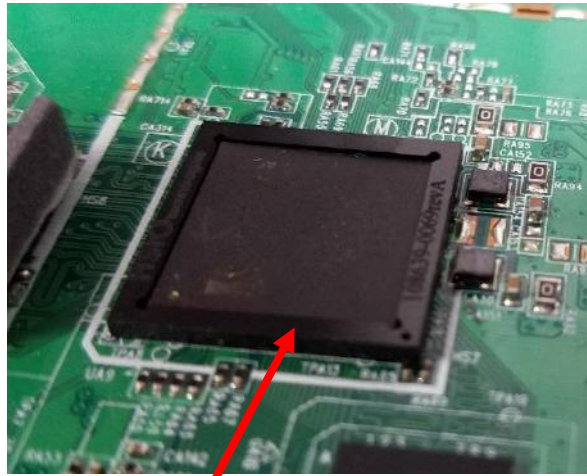
View under target area now supported on the 4 pillars / standoffs under the target socket area Pillars touch non-populated areas under the socket. Note decoupling components around pedestal areas



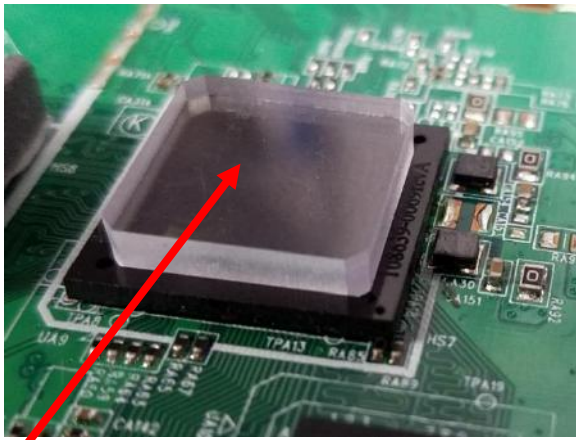
The Support is touching the 4 areas shown above



Grypper socket on PCB



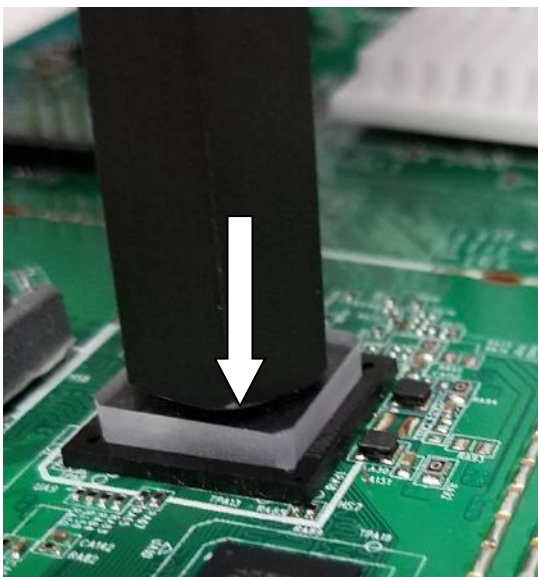
Alignment frame placed around socket and Device placed in the Alignment frame.



Press placed on top of device. The press insures even pressure on the top of the device to insert the device.



Device inserted on applications where under approximately 20 pounds or less are needed your thumb / finger can insert the device



When application requires greater forces to insert the device, an arbor press or similar tool should be used to insure the device is fully inserted.. Contact Ironwood for support on your application.