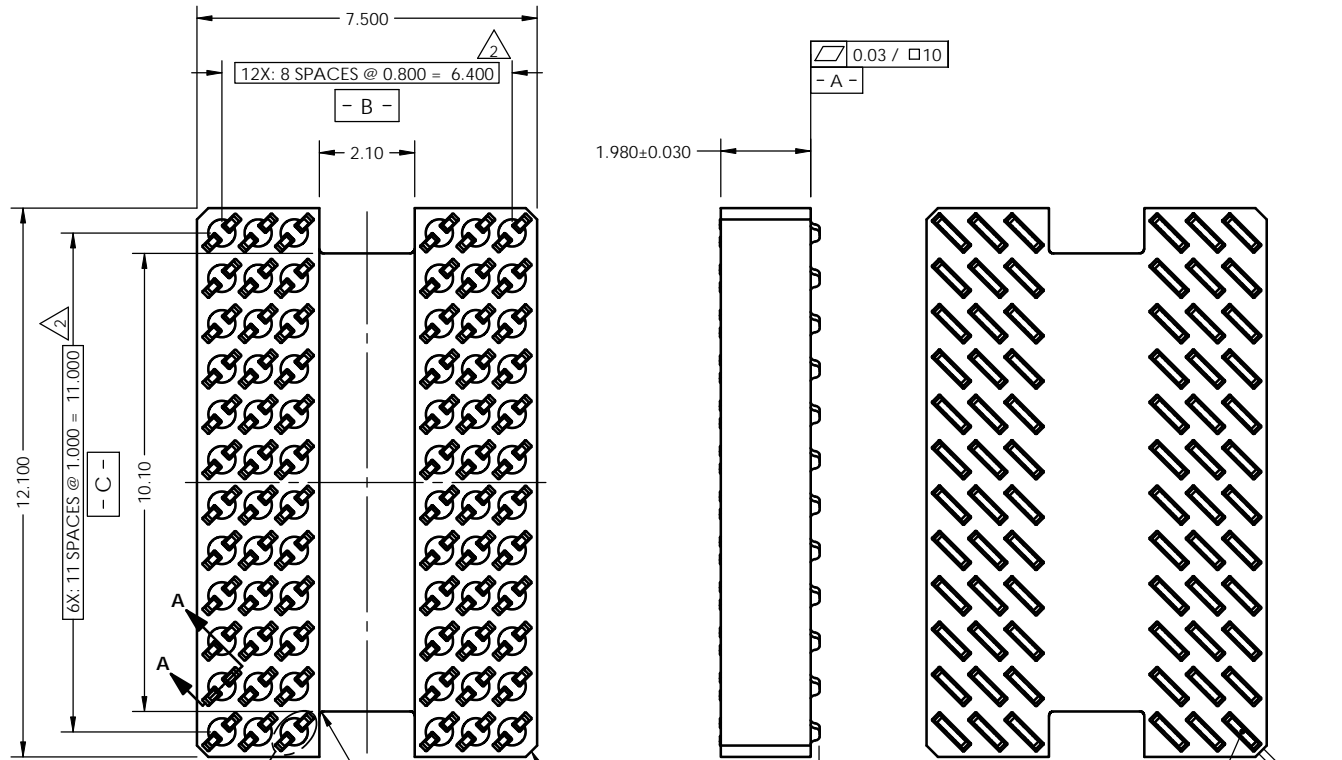


REV	ECO	BY	DESCRIPTION	APV	DATE
A	30529	AS	Initial Design	KW	08/20/10



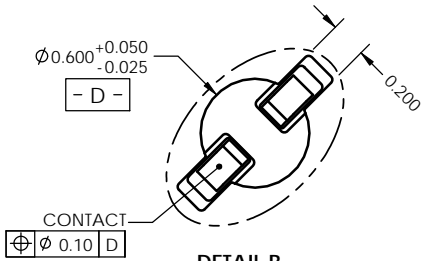
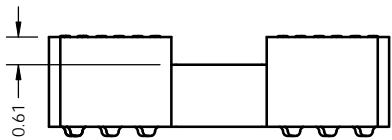
- Notes:
- Footprint part number is 104311-0013.
 - Locates center of contact slots.
 - Press size 7.50 x 12.50.
 - Datums B and C are determined by $\phi 0.600$ opening in corner slots.
 - Unless otherwise specified, all features located $\oplus 0.10$ A B C

PARTS LIST	
PART NUMBER	DESCRIPTION
104670-0006	SCKT, 72GRY7.5X12.1-0.80X1.00
104671-0006	CS, 72GRY7.5X12.1-0.80X1.00
103864-0038	PRESS, DEV INS, 7.5X12.5 (SOLD SEPARATELY)
104553-0033	STEN FLEX, 72GRY7.5X12.1-0.80X1.00 (SOLD SEPARATELY)

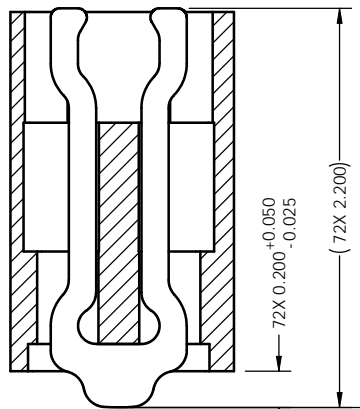
72X SEE DETAIL B

4X R0.10

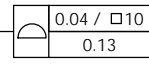
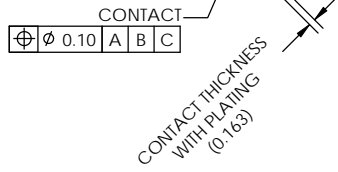
4X 0.25 X 45°



DETAIL B
Scale 4:1



SECTION A-A
Scale 4:1



UNLESS OTHERWISE SPECIFIED
DIMENSIONS ARE IN MILLIMETERS
DIM'S APPLY AFTER PLATING
TOLERANCES UNLESS OTHERWISE NOTED:

ANGLES ±1°

DECIMALS	XX	±0.25
XXX	±0.10	
XXXX	±0.050	

LEGEND:

- NOTE CALLOUT
- REVISION CHANGE
- ITEM NUMBER

DRAWING APPROVALS	
NAME	DATE
C. Wymer	06/16/10
E. Turin	06/18/10

THIRD ANGLE PROJECTION

THE INFORMATION CONTAINED IN THIS DRAWING IS THE SOLE PROPERTY OF CASCADE MICROTECH, INC. ANY REPRODUCTION IN PART OR WHOLE WITHOUT THE WRITTEN PERMISSION OF CASCADE MICROTECH, INC. IS PROHIBITED.

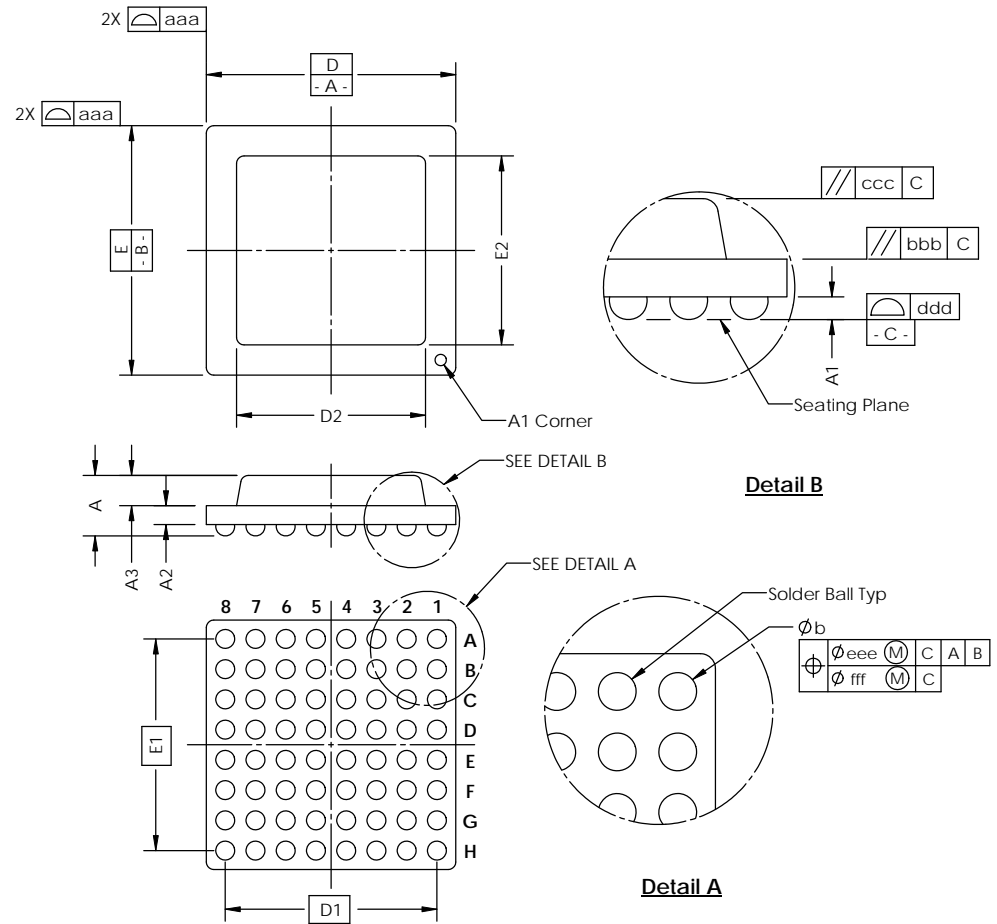
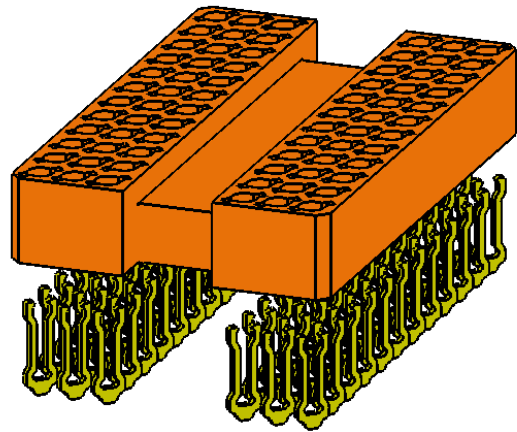
CASCADE MICROTECH, INC.
7115 NORTHLAND TERRACE SUITE 400
BROOKLYN PARK, MN 55428
(763) 509-0066

SCKT, 72GRY7.5X12.1-0.80X1.00

SCALE	CUSTOMER: CALIFORNIA SOLIDWORKS	DESCRIPTION: 104670-0006	SHEET: A
SEE BOM		1 of 1	

Device Specification					
Lead Count	N	72	Package Size	D	7.50
Columns	ND	9		E	12.10
Rows	NE	12	Ball Spacing	D1	6.40
Pitch	e	0.80X1.00**		E1	11.00
Ball Size	b	0.50±0.05	Encapsulant/ Top Size	D2	n/a
Total Thickness	A	n/a		E2	n/a
Ball Height	A1	0.35±0.05	Pattern Style	Irregular*	
Substrate Thickness	A2	n/a	Perimeter Rows	n/a	
Top Thickness	A3	n/a	Center Array	n/a	
Form Tolerances					
Edge	aaa	0.20	Bottom	ddd	0.15
Substrate	bbb	0.20	Position	eee	0.20
top	ccc	0.20	Position	fff	0.08

All dimensions are in millimeters.
 *See footprint specification for pattern details.
 **Device has a variable pitch. Balls are spaced at a 0.80 pitch in the ND directions and 1.00 in the NE direction.



Generic Representation with Full Grid Array

THE INFORMATION CONTAINED IN THIS DRAWING IS THE SOLE PROPERTY OF CASCADE MICROTECH, INC. ANY REPRODUCTION IN PART OR WHOLE WITHOUT THE WRITTEN PERMISSION OF CASCADE MICROTECH, INC. IS PROHIBITED.			
UNLESS OTHERWISE SPECIFIED - DIMENSIONS ARE IN MILLIMETERS - DIMS APPLY AFTER PLATING TOLERANCES UNLESS OTHERWISE NOTED:	DECIMALS X.X ±0.25 X.XX ±0.10 X.XXX ±0.050	7115 NORTHLAND TERRACE SUITE 400 BROOKLYN PARK, MN 55428 (763) 509-0066	CASCADE MICROTECH, INC.
SCKT, 72GRY7.5X12.1-0.80X1.00		DATE	REV
LEGEND:	NOTE CALLOUT	SCALE	DRAWING NO.
(X) NOTE CALLOUT	(R) REVISION CHANGE	C	104670-0006
(I) ITEM NUMBER		MATERIAL	A
		See Page 1	2 of 2