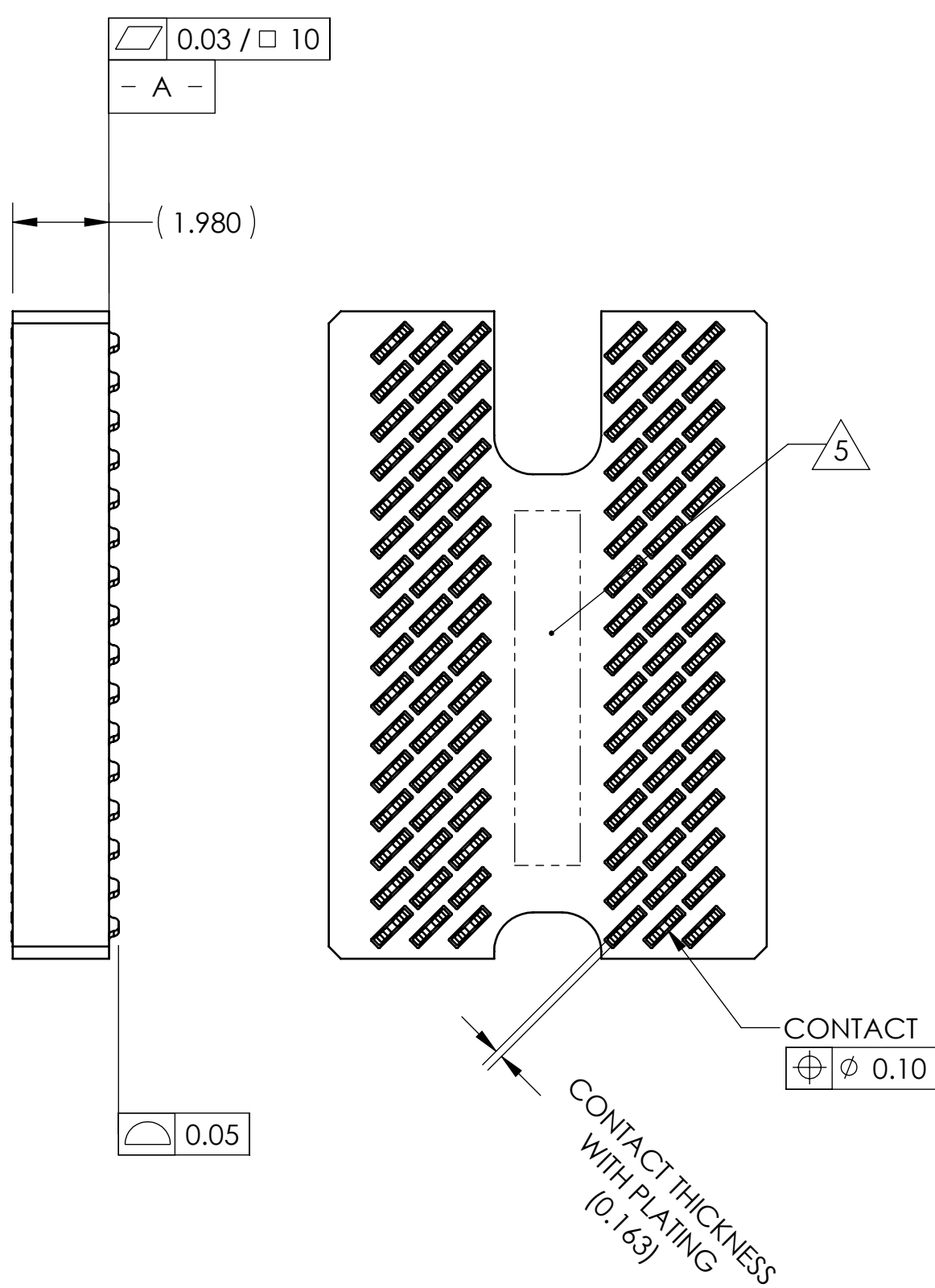
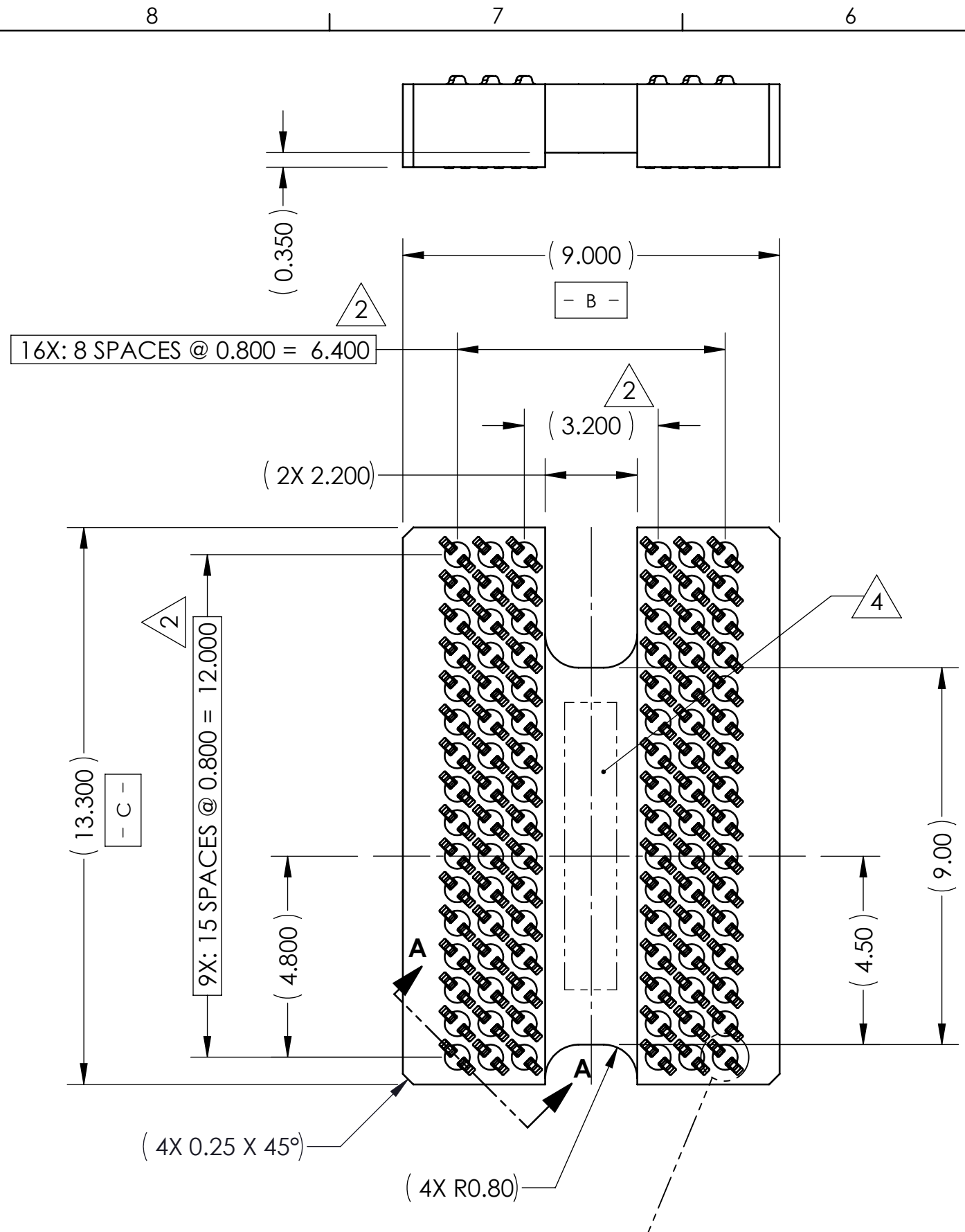
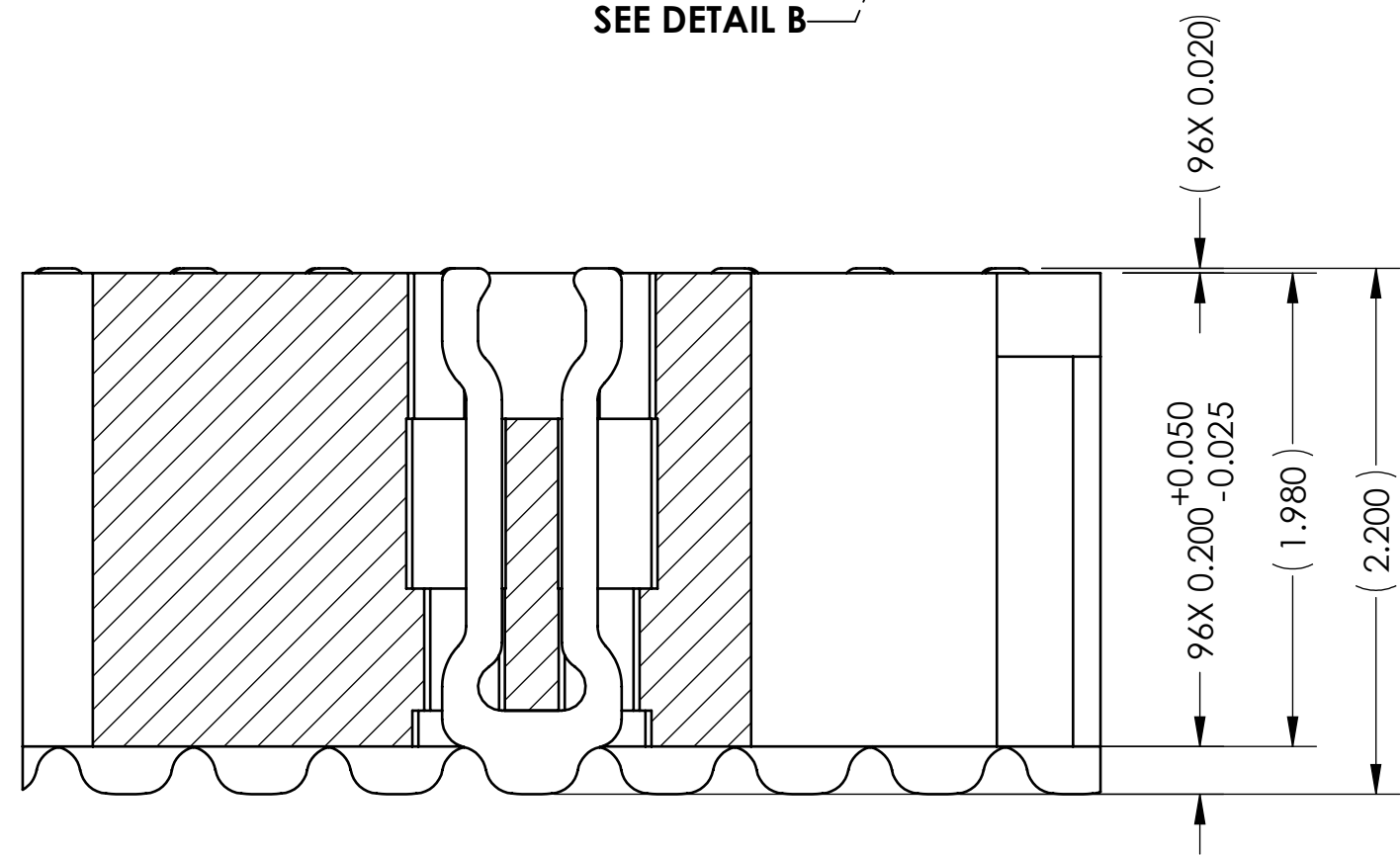


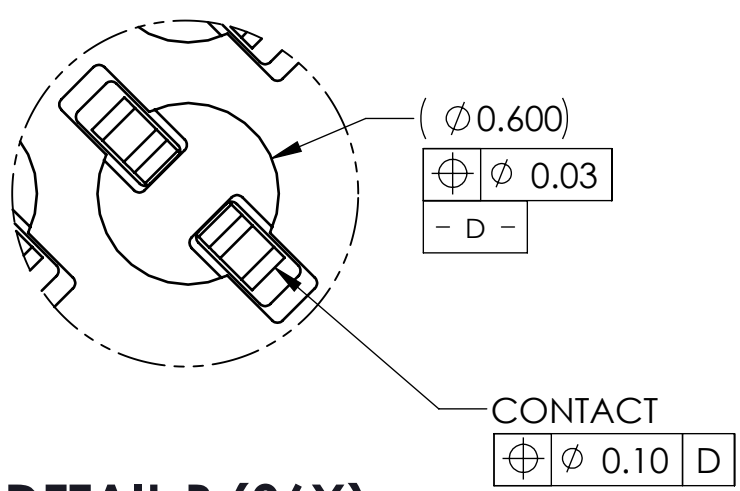
REV	ECO	BY	DESCRIPTION	APV	DATE
A		KP	Initial Design	MP	07/22/09



- Notes:
- Footprint part number is 104311-0148.
  - Dimension locates center of contact.
  - Press size is 9.00 X 13.30.
  - Permanently mark part number and rev. level in area shown.
  - Permanently mark company Logo in area shown.



**SECTION A-A**  
Scale 4:1

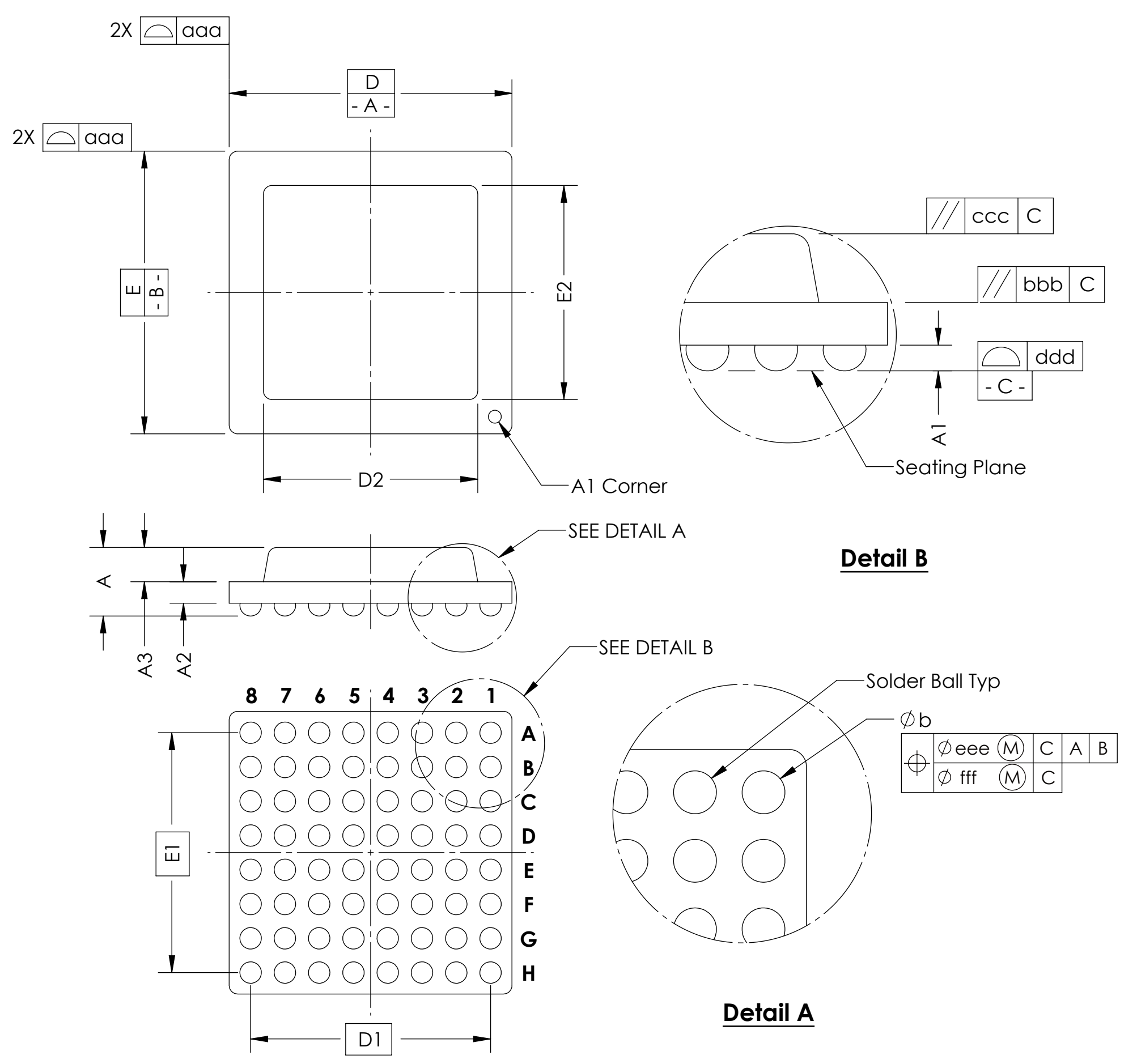
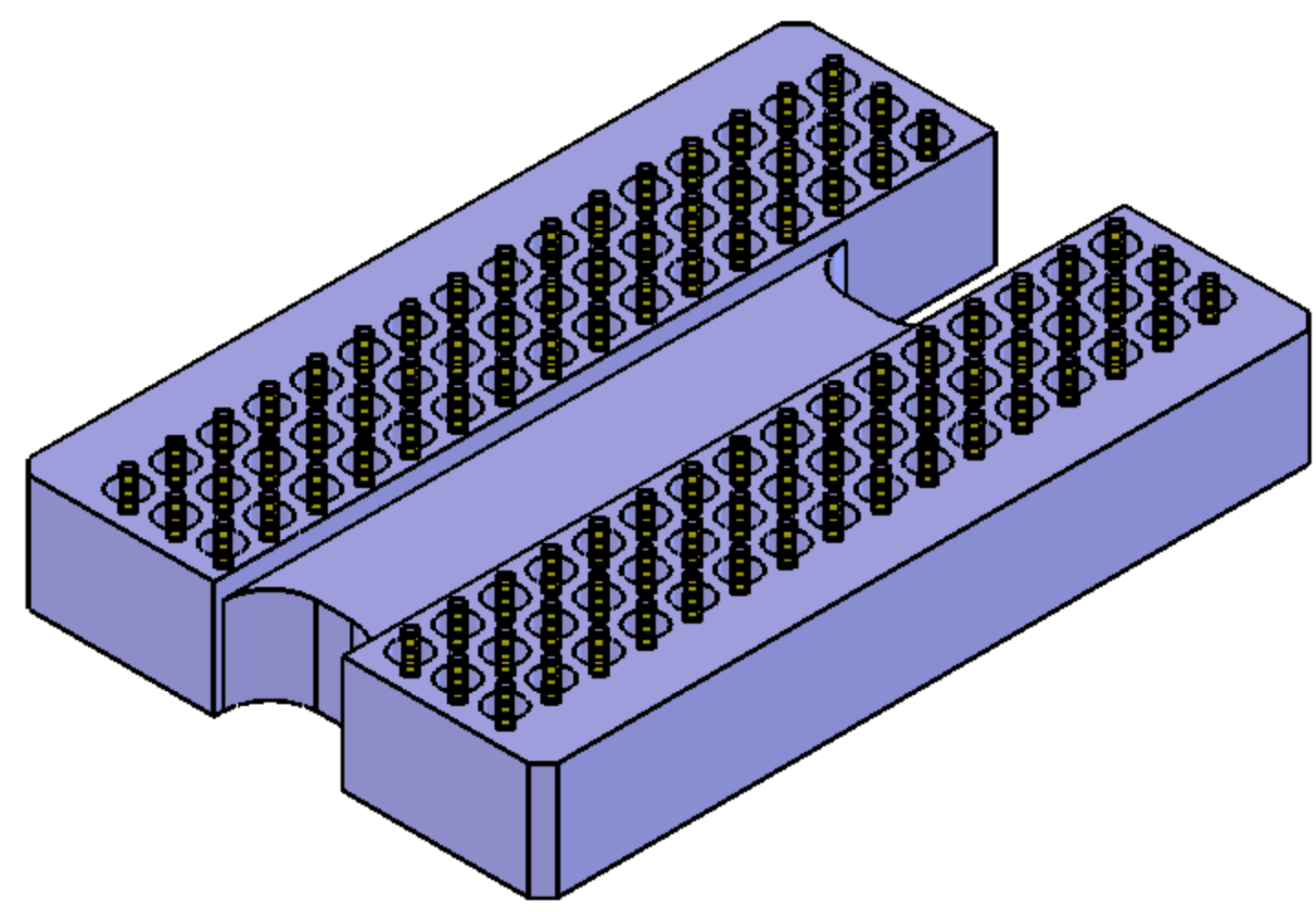


**DETAIL B (96X)**  
Scale 5:1

UNLESS OTHERWISE SPECIFIED - DIMENSIONS ARE IN MILLIMETERS - DIMS APPLY AFTER PLATING - TOLERANCES UNLESS OTHERWISE NOTED:		THE INFORMATION CONTAINED IN THIS DRAWING IS THE SOLE PROPERTY OF CASCADE MICROTECH, INC. ANY REPRODUCTION IN PART OR WHOLE WITHOUT THE WRITTEN PERMISSION OF CASCADE MICROTECH, INC. IS PROHIBITED.	
ANGLES ±1° DECIMALS X.X ±0.25 X.XX ±0.10 X.XXX ±0.050		CAD GENERATED DRAWING DO NOT MANUALLY UPDATE	
LEGEND:		DRAWING APPROVALS NAME DATE K. Pitney 07/22/09 M. Peery 07/22/09	
(X) NOTE CALLOUT (A) REVISION CHANGE (X) ITEM NUMBER	THIRD ANGLE PROJECTION	7115 NORTHLAND TERRACE SUITE 400 BROOKLYN PARK, MN 55428 (763) 509-0066 <b>SCKT, 96GRY9X13.3-0.80</b>	
SCALE: C CAD FORMAT: SOLIDWORKS MATERIAL: SEE BOM		DRAWING NO.: 104670-0023 REV.: A SHEET: 1 of 2	

SOCKET FOR DEVICES THAT ARE WITHIN THESE SPECIFICATIONS					
Lead Count	<b>N</b>	96	Package Size	<b>D</b>	9
Columns	<b>ND</b>	9		<b>E</b>	13.30
Rows	<b>NE</b>	13	Ball Spacing	<b>D1</b>	6.40
Pitch	<b>e</b>	0.800		<b>E1</b>	12.00
Ball Size	<b>b</b>	0.50±0.05	Encapsulant/ Top Size	<b>D2</b>	n/a
Total Thickness	<b>A</b>	N/A		<b>E2</b>	n/a
Ball Height	<b>A1</b>	0.30 Min	Pattern Style	Irregular*	
Substrate Thickness	<b>A2</b>	N/A	Perimeter Rows	n/a	
Top Thickness	<b>A3</b>	N/A	Center Array	n/a	
Form Tolerances					
Edge	<b>aaa</b>	0.20	Bottom	<b>ddd</b>	0.15
Substrate	<b>bbb</b>	0.20	Position	<b>eee</b>	0.20
Top	<b>ccc</b>	0.20	Position	<b>fff</b>	0.08

All dimensions are in millimeters.  
\*See footprint specification for pattern details.



**Generic Representation with Full Grid Array**

<small>THE INFORMATION CONTAINED IN THIS DRAWING IS THE SOLE PROPERTY OF CASCADE MICROTECH, INC. ANY REPRODUCTION IN PART OR WHOLE WITHOUT THE WRITTEN PERMISSION OF CASCADE MICROTECH, INC. IS PROHIBITED.</small>			
<small>UNLESS OTHERWISE SPECIFIED - DIMENSIONS ARE IN MILLIMETERS - DIMS APPLY AFTER PLATING TOLERANCES UNLESS OTHERWISE NOTED: DECIMALS ANGLES X.X ±0.25 ±1° X.XX ±0.10 X.XXX ±0.050</small>		7115 NORTHLAND TERRACE SUITE 400 BROOKLYN PARK, MN 55428 (763) 509-0066	
<b>SCKT, 96GRY9X13.3-0.80</b>			
<small>LEGEND:</small> NOTE CALLOUT REVISION CHANGE ITEM NUMBER	<small>SIZE</small> C <small>CAD FORMAT</small> SOLIDWORKS <small>SCALE</small>	<small>DRAWING NO.</small> <b>104670-0023</b> <small>REV.</small> A <small>SCALE</small> See Page 1	<small>REV.</small> A <small>SHEET</small> 2 of 2