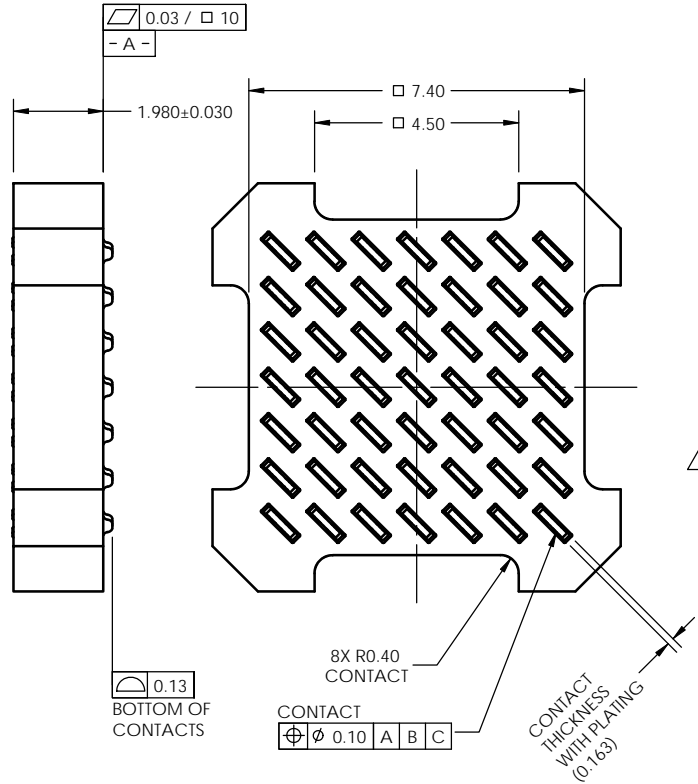
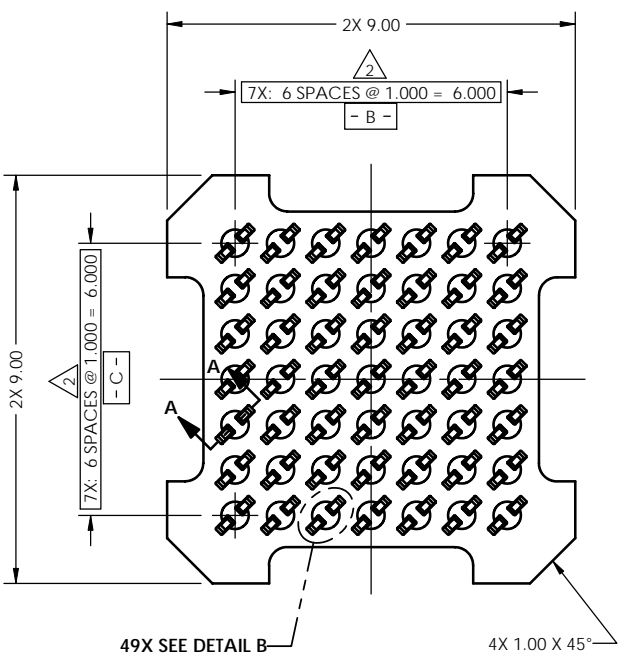
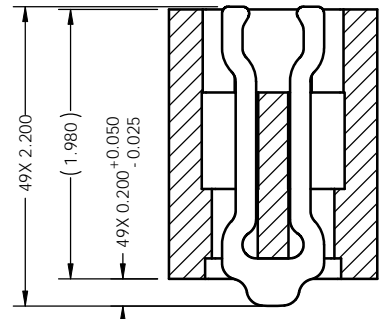


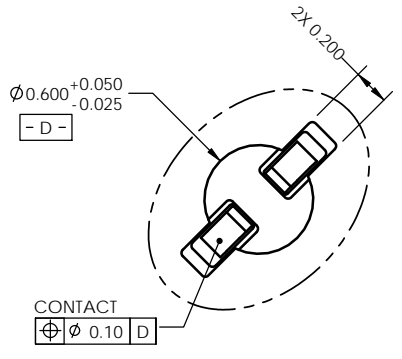
REV	ECO	BY	DESCRIPTION	APV	DATE
A	30953	SK	Initial Design	KW	11/21/11



- Notes:
1. Footprint part number is 104311-0301.
 2. Δ Locates center of cotact slots.
 3. Press size 9.00 x 9.00.
 4. Datums **- B -** and **- C -** are determined by $\phi 0.600$ opening in corner slots.
 5. Unless otherwise specified, all features located $\oplus 0.10$ A B C



SECTION A-A
SCALE 3:1




DETAIL B
SCALE 4:1

UNLESS OTHERWISE SPECIFIED
DIMENSIONS ARE IN MILLIMETERS
DIM'S APPLY AFTER PLATING
TOLERANCES UNLESS OTHERWISE NOTED:

ANGLES ±1°	DECIMALS XX ±0.25 XXX ±0.10 XXXX ±0.050
------------	--------------------------------------------------

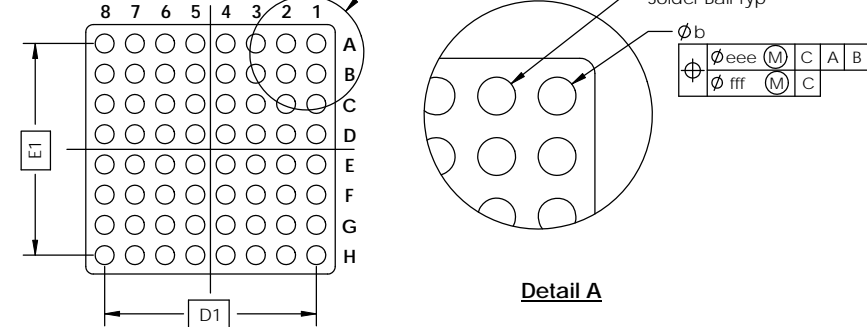
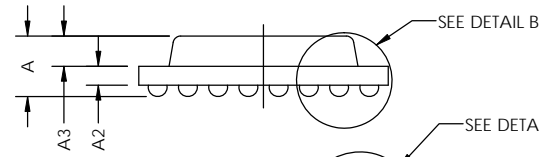
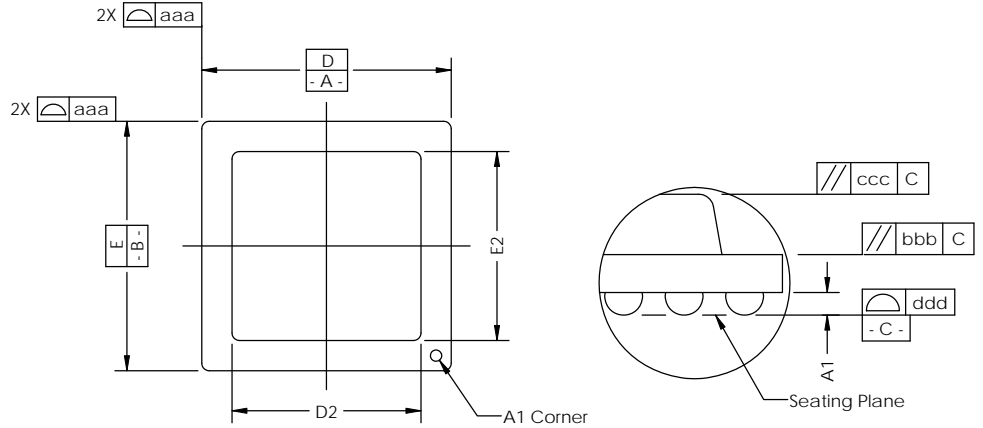
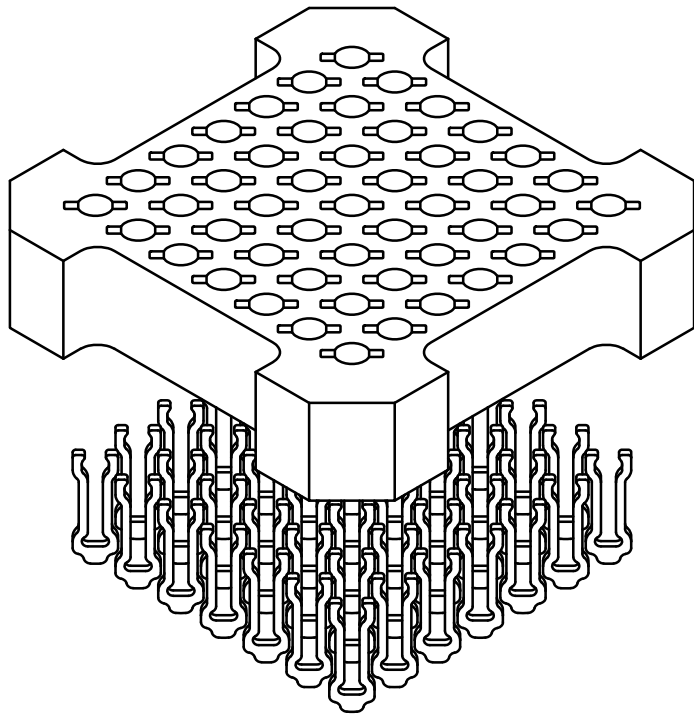
LEGEND:

- Δ NOTE CALLOUT
- $\text{\textcircled{A}}$ REVISION CHANGE
- $\text{\textcircled{X}}$ ITEM NUMBER

CAD GENERATED DRAWING DO NOT MANUALLY UPDATE		 7115 NORTHLAND TERRACE SUITE 400 BROOKLYN PARK, MN 55428 (763) 509-0066	
DRAWING APPROVALS		SCKT, 49GRY9-1.0	
DESIGN: S. Klanderud	DATE: 11/21/11	DRAWING NO: 104670-0035 REV: A	
APPROV: K. Wilson	DATE: 11/21/11		
THIRD ANGLE PROJECTION		SCALE: C	MATERIAL: SOLIDWORKS
SEE BOM		SHEET: 1 of 2	

Device Specification					
Lead Count	N	49	Package Size	D	9.00
Columns	ND	7		E	9.00
Rows	NE	7	Ball Spacing	D1	6.00
Pitch	e	1.000		E1	6.00
Ball Size	b	0.50±0.05	Encapsulant/ Top Size	D2	n/a
Total Thickness	A	n/a		E2	n/a
Ball Height	A1	0.30 min	Pattern Style	FULL GRID	
Substrate Thickness	A2	n/a	Perimeter Rows	n/a	
Top Thickness	A3	n/a	Center Array	n/a	
Form Tolerances					
Edge	aaa	0.20	Bottom	ddd	0.15
Substrate	bbb	0.20	Position	eee	0.20
top	ccc	0.20	Position	fff	0.08

All dimensions are in millimeters.



Generic Representation with Full Grid Array

THE INFORMATION CONTAINED IN THIS DRAWING IS THE SOLE PROPERTY OF R&D INTERCONNECT SOLUTIONS. ANY REPRODUCTION IN PART OR WHOLE WITHOUT THE WRITTEN PERMISSION OF R&D INTERCONNECT SOLUTIONS IS PROHIBITED.

UNLESS OTHERWISE SPECIFIED
- DIMENSIONS ARE IN MILLIMETERS
- DIMES APPLY AFTER PLATING
TOLERANCES UNLESS OTHERWISE NOTED: DECIMALS
ANGLES X.X ±0.25
X.XX ±0.10
X.XXX ±0.050

LEGEND:
 NOTE CALLOUT
 REVISION CHANGE
 ITEM NUMBER

RD Interconnect Solutions 7115 NORTHLAND TERRACE, SUITE 400
BROOKLYN PARK, MN 55428
(763) 509-0066

SCKT, 49GRY9-1.0

SCALE	CAD FORMAT	DRAWING NO.	REV.
C	SOLIDWORKS	104670-0035	A
MATERIAL	SCALE	SEE PAGE 1	SHEET 2 OF 2