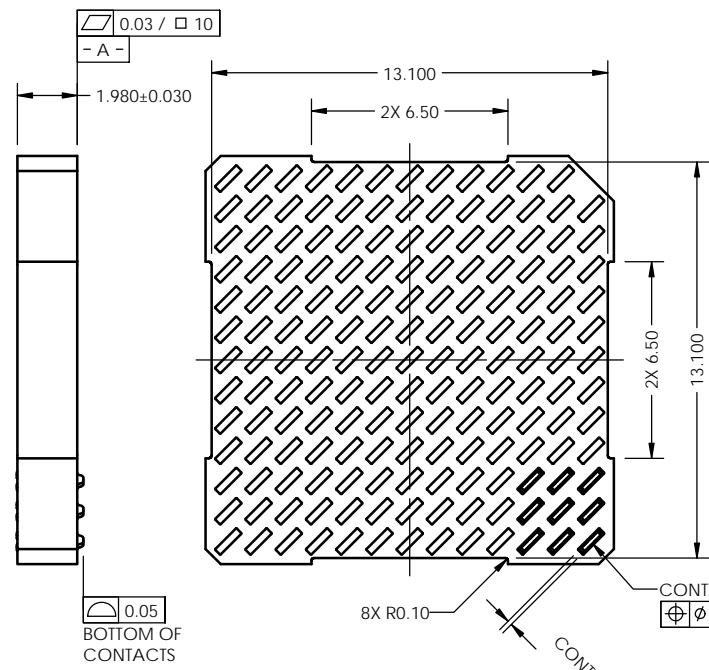
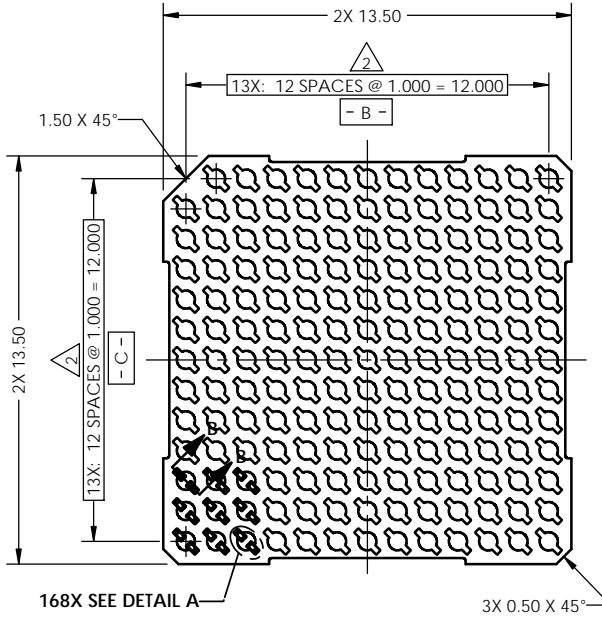
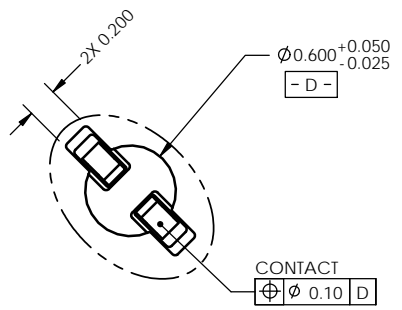


REV	ECO	BY	DESCRIPTION	APV	DATE
A	31413	AS	Initial Design	MP	11/04/13

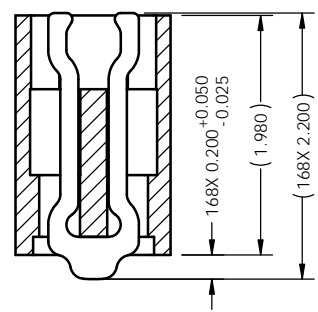


- Notes:
1. Dimension locates center of contact/slot.
 2. Footprint part number is 104311-0400.
 3. Press size is 13.50 X 13.50.
 4. Datums **- B -** and **- C -** are determined by $\varnothing 0.600$ opening in corner slots.
 5. Unless otherwise specified, all features located $\varnothing 0.10$ A B C

PARTS LIST	
PART NUMBER	DESCRIPTION
104671-0037	CS.152GRY14X18-1.00
103864-0166	PRESS, DEV INS, 13.5X13.5 (SOLD SEPARATELY)
104553-0312	STEN FLEX, 168GRY13.5-1.0 (SOLD SEPARATELY)



DETAIL A (168X)
SCALE 5:1



SECTION B-B
SCALE 4:1

HSIO technologies

PROPRIETARY AND CONFIDENTIAL

THE INFORMATION CONTAINED IN THIS DRAWING IS THE SOLE PROPERTY OF HSIO TECHNOLOGIES, LLC. ANY REPRODUCTION IN PART OR AS A WHOLE WITHOUT THE WRITTEN PERMISSION OF HSIO TECHNOLOGIES, LLC IS PROHIBITED.

UNLESS OTHERWISE SPECIFIED:

DIMENSIONS ARE IN MILLIMETERS

TOLERANCES:

ANGULAR: $\pm 1^\circ$

X.X: ± 0.25

X.XX: ± 0.10

X.XXX: ± 0.050

NAME	DATE
DRAWN: PVW	11/04/13
CHECKED: MP	11/04/13

LEGEND:

- △ NOTE CALLOUT
- REVISION CHANGE
- ITEM NUMBER

HSIO TECHNOLOGIES, LLC.

13300 67th AVENUE NORTH

MAPLE GROVE, MINNESOTA 55311

763-447-6260

TITLE:

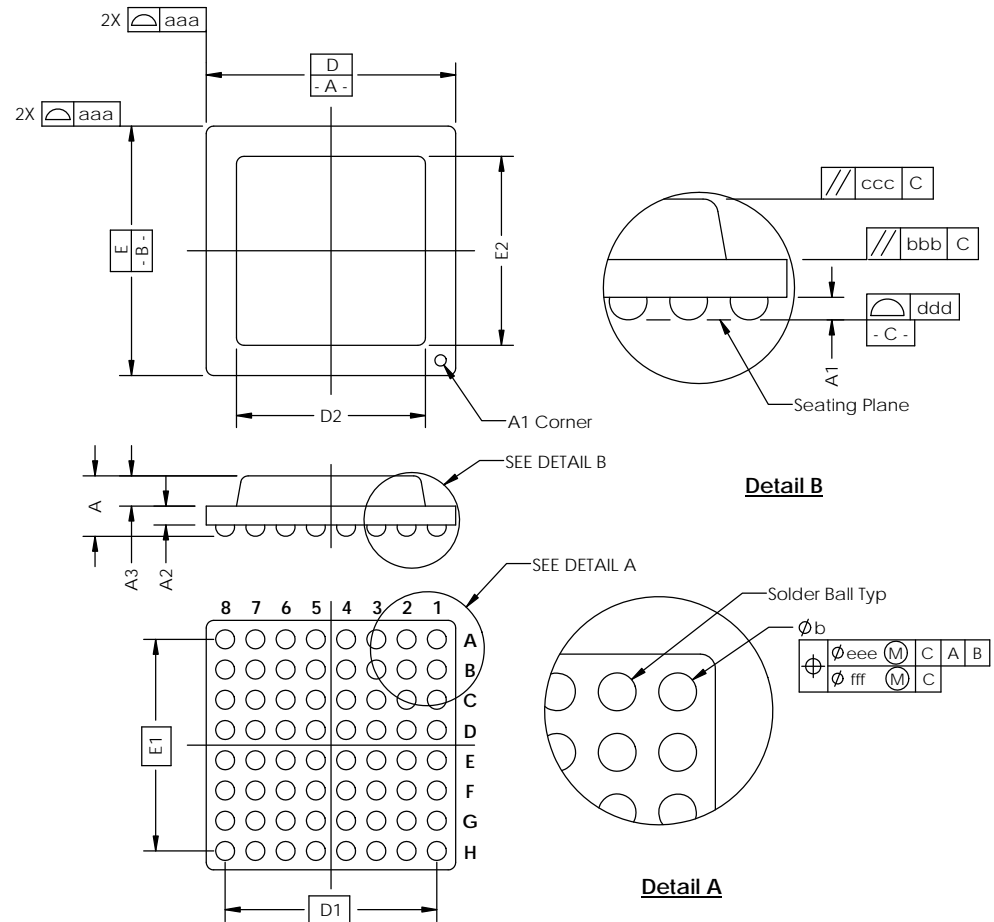
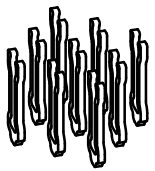
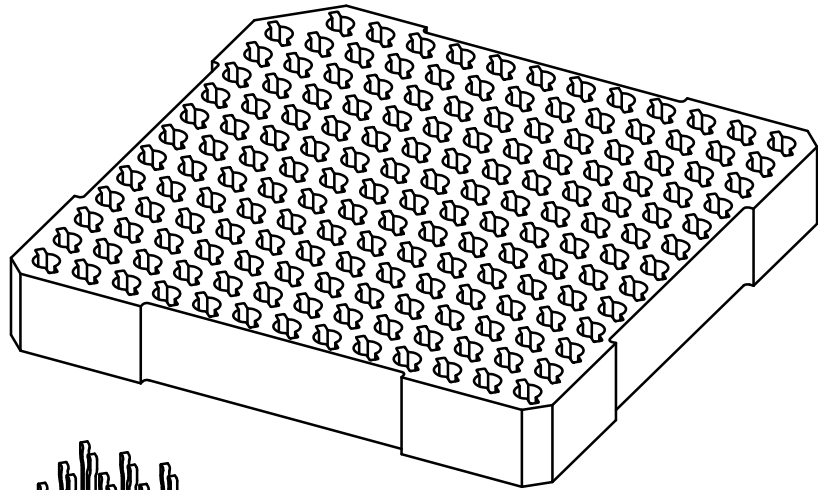
SCKT, 168GRY13.5-1.0

DWG. NO. **104670-0037**

REV **A**

SCALE: 5:1 SIZE: C SHEET 1 OF 2

Device Specification					
Lead Count	N	168	Package Size	D	13.50
Columns	ND	13		E	13.50
Rows	NE	13	Ball Spacing	D1	12.000
Pitch	e	1.000		E1	12.000
Ball Size	b	0.50±0.05	Encapsulant/Top Size	D2	N/A
Total Thickness	A	N/A		E2	N/A
Ball Height	A1	0.30 min	Pattern Style	FULL GRID*	
Substrate Thickness	A2	N/A	Perimeter Rows	N/A	
Top Thickness	A3		Center Array	N/A	
Form Tolerances					
Edge	aaa	0.20	Bottom	ddd	0.15
Substrate	bbb	0.20	Position	eee	0.20
top	ccc	0.20	Position	fff	0.08
All dimensions are in millimeters. *See footprint specification for pattern details.					



Generic Representation with Full Grid Array

PROPRIETARY AND CONFIDENTIAL				
THE INFORMATION CONTAINED IN THIS DRAWING IS THE SOLE PROPERTY OF HSIO TECHNOLOGIES, LLC. ANY REPRODUCTION IN PART OR AS A WHOLE WITHOUT THE WRITTEN PERMISSION OF HSIO TECHNOLOGIES, LLC IS PROHIBITED.				
UNLESS OTHERWISE SPECIFIED:	NAME	DATE	HSIO TECHNOLOGIES, LLC. 13300 67th AVENUE NORTH MAPLE GROVE, MINNESOTA 55311 763-447-6260	
DIMENSIONS ARE IN MILLIMETERS	DRAWN	AS		11/04/13
TOLERANCES: ANGULAR: ±1° XX ±0.25 XXX ±0.10 X:XXX ±0.050	CHECKED	MP		11/04/13
LEGEND:			TITLE:	
△ NOTE CALLOUT			SCKT, 168GRY13.5-1.0	
○ REVISION CHANGE				
○ ITEM NUMBER	DWG. NO.	REV		
	104670-0037	B		
	SCALE: 5:1	SIZE: C	SHEET 2 OF 2	