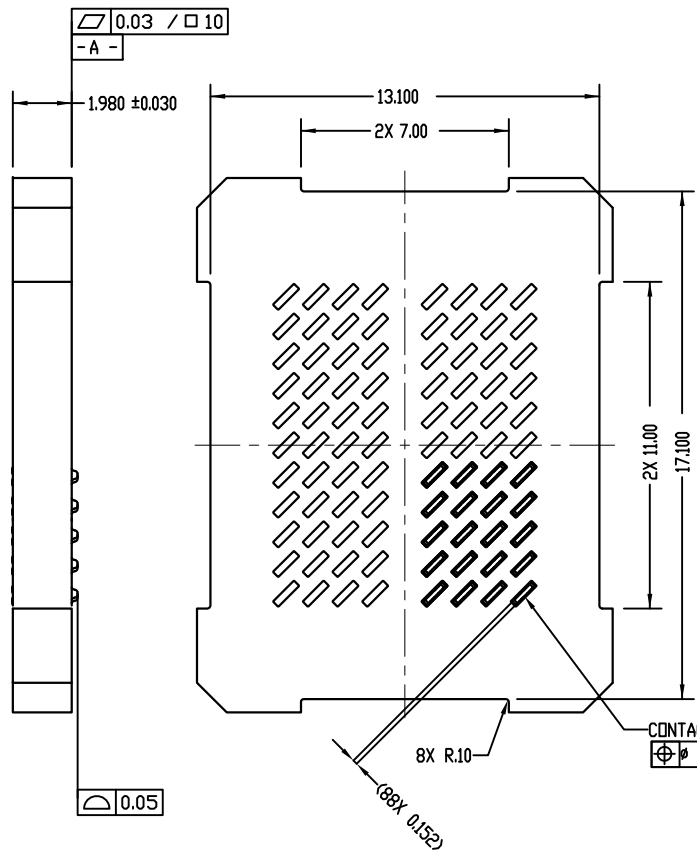
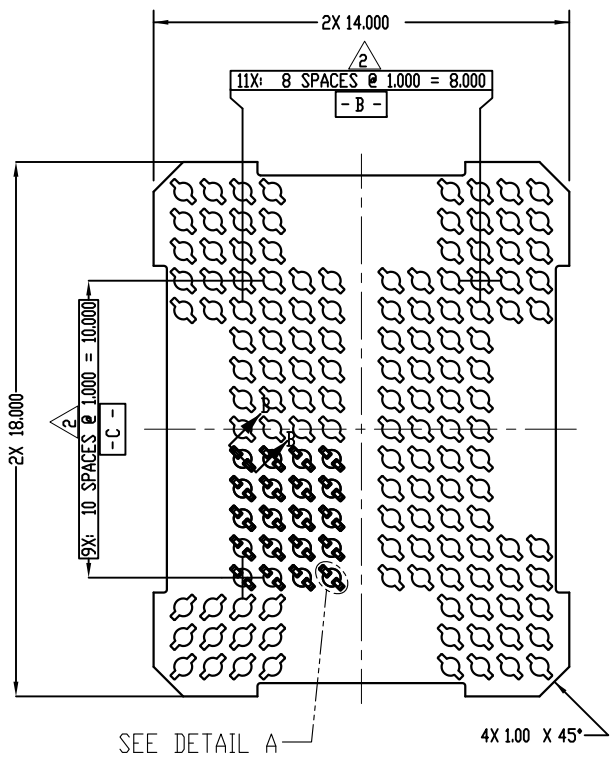
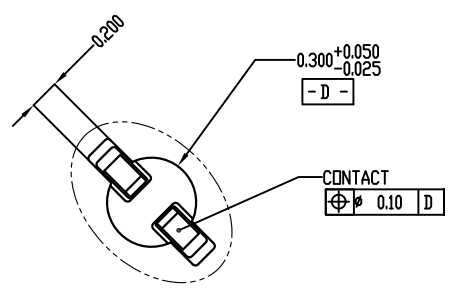


| REV | ECO | BY | DESCRIPTION | APV | DATE |
|-----|-------|----|----------------|-----|----------|
| A | 31529 | RS | Initial Design | NSJ | 07/28/14 |

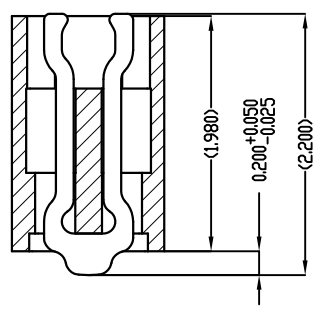


- Notes:
1. Dimension locates center of contact/slot.
 2. Unless otherwise specified, all features located $\oplus 0.10$ A B C
 3. Press size is 14.00 X 18.00.
 4. Datums -B- and -C- are determined by Ø6.00 opening in corner lasts.

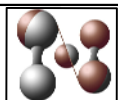
| PARTS LIST | |
|-------------|--|
| PART NUMBER | DESCRIPTION |
| 104671-0039 | CS, 88GRY14X18-1.00 |
| 103864-0116 | PRESS, DEV INS, 14 X 18 (SOLD SEPARATELY) |
| 104553-0347 | STEN FLEX, 88GRY14X18-1.00 (SOLD SEPARATELY) |



DETAIL A
SCALE 5:1

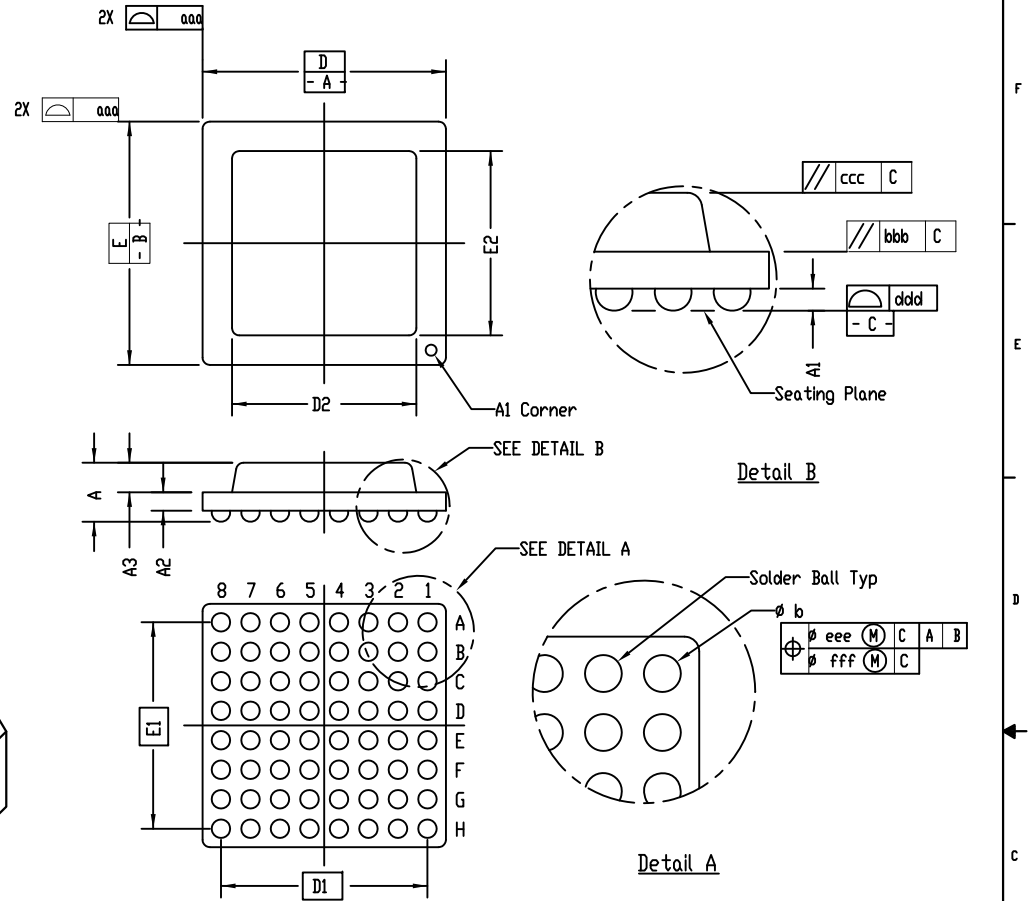
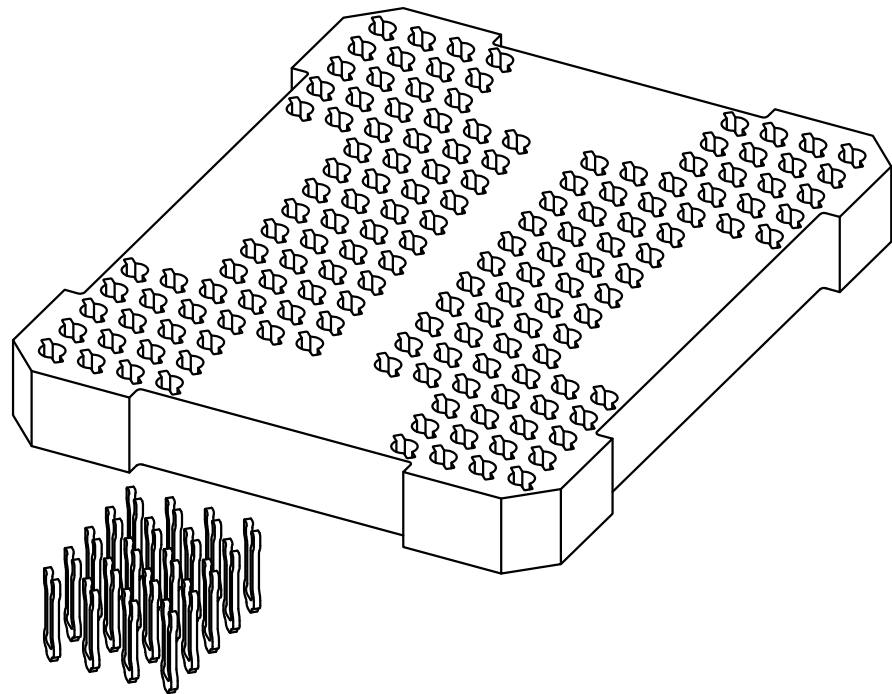


SECTION B-B
SCALE 4:1

| | | | | | |
|---|---|-------------------|------|--|----------|
|  HSIO technologies PROPRIETARY AND CONFIDENTIAL THE INFORMATION CONTAINED IN THIS DRAWING IS THE SOLE PROPERTY OF HSIO TECHNOLOGIES, LLC. ANY REPRODUCTION IN PART OR AS A WHOLE WITHOUT THE WRITTEN PERMISSION OF HSIO TECHNOLOGIES, LLC IS PROHIBITED. | UNLESS OTHERWISE SPECIFIED: | NAME | DATE | HSIO TECHNOLOGIES, LLC. 13300 67th AVENUE NORTH MAPLE GROVE, MINNESOTA 55311 763-447-6260 TITLE: SCKT, 88GRY14X18-1.00 | |
| | DIMENSIONS ARE IN MILLIMETERS | DRAWN | RS | | 07/28/14 |
| | TOLERANCES: ANGULAR: ± 1° XX ± 0.25 XXX ± 0.10 XXXX ± 0.050 | CHECKED | NSJ | | 07/28/14 |
| | INTERPRET GEOMETRIC TOLERANCING PER: MATERIAL: SEE BOM FINISH | LEGEND: | | | |
| DO NOT SCALE DRAWING | | △ NOTE CALLOUT | | DWG. NO. | |
| | | ○ REVISION CHANGE | | 104670-0039 | |
| | | ○ ITEM NUMBER | | REV | |
| | | | | A | |
| | | | | SCALE: 5:1 SIZE: C SHEET 1 OF 2 | |

| Device Specification | | | | | |
|----------------------|-----|-----------|----------------------|-----------|-------|
| Lead Count | N | 88 | Package Size | D | 14.00 |
| Columns | ND | 08 | Package Size | E | 18.00 |
| Rows | NE | 11 | Ball Spacing | D1 | 8.00 |
| Pitch | e | 1.000 | Ball Spacing | E1 | 10.00 |
| Ball Size | b | 0.50±0.05 | Encapsulant/Top Size | D2 | N/A |
| Total Thickness | A | N/A | Encapsulant/Top Size | E2 | N/A |
| Ball Height | A1 | 0.30 min | Pattern Style | Irregular | |
| Substrate Thickness | A2 | N/A | Perimeter Rows | N/A | |
| Top Thickness | A3 | N/A | Center Array | N/A | |
| Form Tolerances | | | | | |
| Edge | aaa | 0.20 | Bottom | ddd | 0.15 |
| Substrate | bbb | 0.20 | Position | eee | 0.20 |
| top | ccc | 0.20 | Position | fff | 0.08 |

All dimensions are in millimeters.
*See footprint specification for pattern details.



Generic Representation with Full Grid Array

PROPRIETARY AND CONFIDENTIAL
THE INFORMATION CONTAINED IN THIS DRAWING IS THE SOLE PROPERTY OF HSD TECHNOLOGIES, LLC. ANY REPRODUCTION IN PART OR AS A WHOLE WITHOUT THE WRITTEN PERMISSION OF HSD TECHNOLOGIES, LLC IS PROHIBITED.

| | | | |
|-------------------------------|---------|------|---|
| UNLESS OTHERWISE SPECIFIED: | NAME | DATE | HSD TECHNOLOGIES, LLC. 13300 67th AVENUE NORTH MAPLE GROVE, MINNESOTA 55311 763-447-6260 |
| DIMENSIONS ARE IN MILLIMETERS | DRAWN | RS | |
| TOLERANCES: | CHECKED | NSJ | 07/28/14 |
| ANGULAR: ± 1° | | | |
| XX ± 0.25 | | | |
| XXX ± 0.10 | | | |
| XXXX ± 0.050 | | | |

TITLE:
SCKT, 88GY14X18-1.00

LEGEND:
△ NOTE CALLOUT
○ REVISION CHANGE
○ ITEM NUMBER

DWG. NO.
104670-0039

SCALE: 5:1 | SIZE: C | SHEET 2 OF 2

REV
A