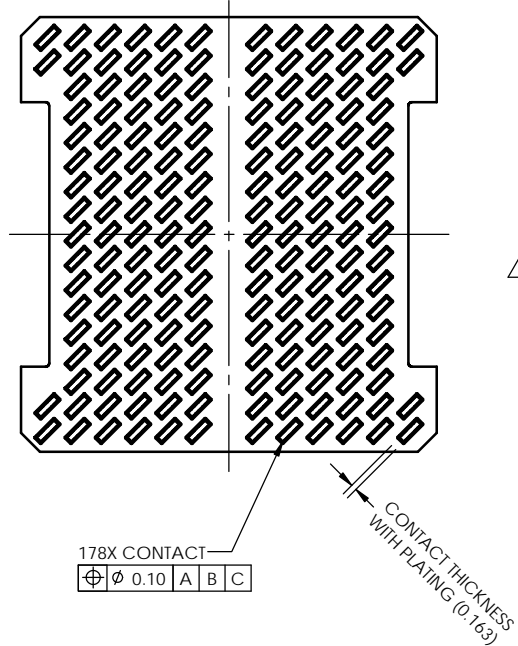
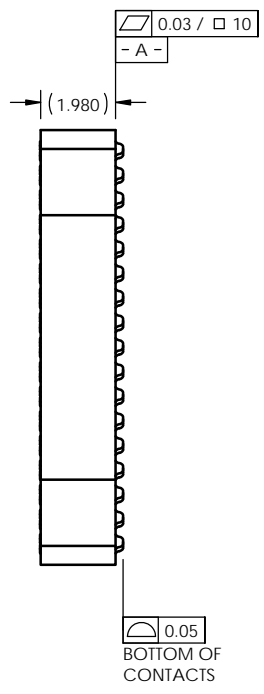
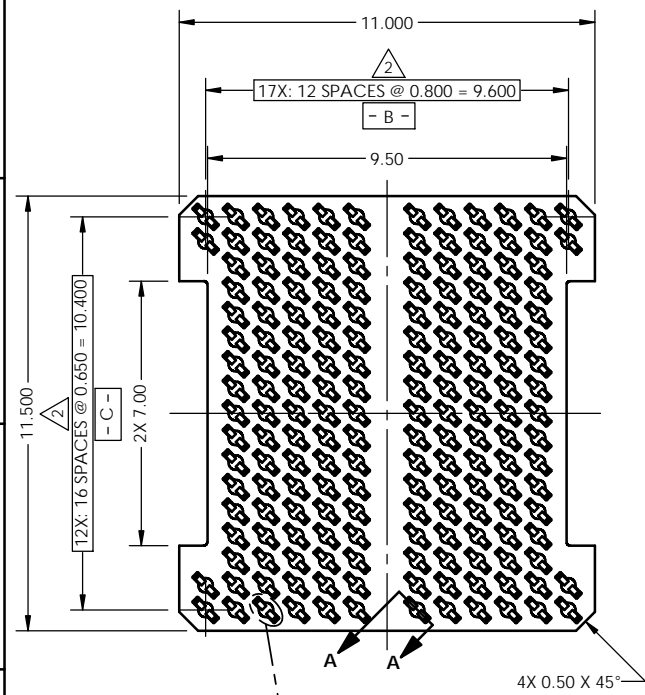
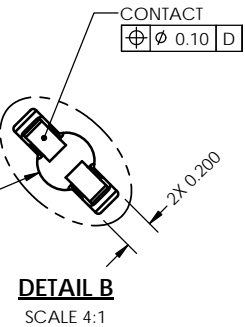
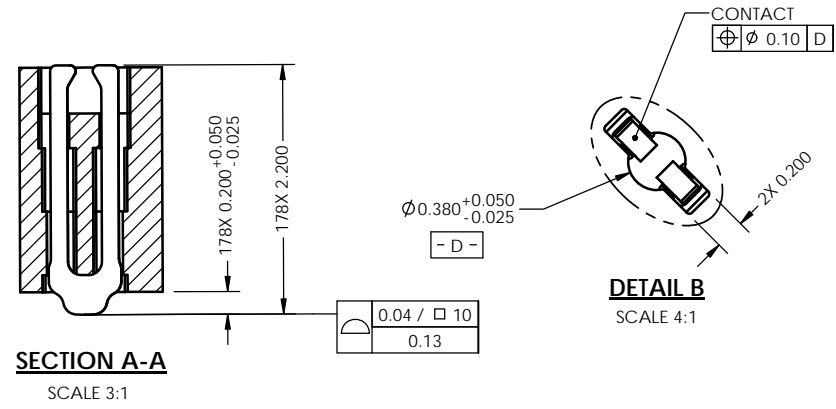


REV	ECO	BY	DESCRIPTION	APV	DATE
A	31191	WB	Initial Design	KW	08/30/12



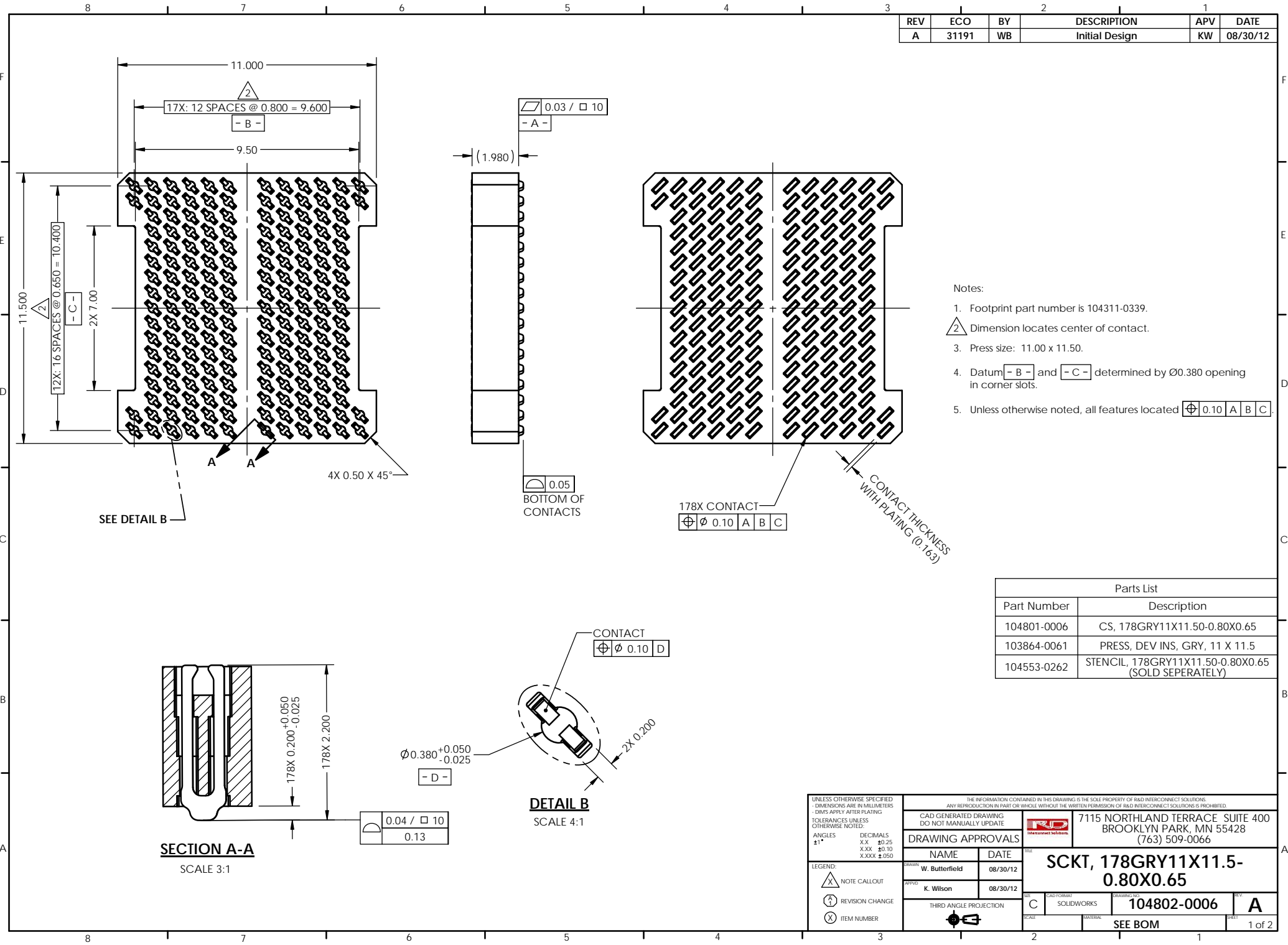
- Notes:
- Footprint part number is 104311-0339.
  - Dimension locates center of contact.
  - Press size: 11.00 x 11.50.
  - Datum - B - and - C - determined by  $\varnothing 0.380$  opening in corner slots.
  - Unless otherwise noted, all features located  $\varnothing 0.10$  A B C.

Parts List	
Part Number	Description
104801-0006	CS, 178GRY11X11.50-0.80X0.65
103864-0061	PRESS, DEV INS, GRY, 11 X 11.5
104553-0262	STENCIL, 178GRY11X11.50-0.80X0.65 (SOLD SEPERATELY)



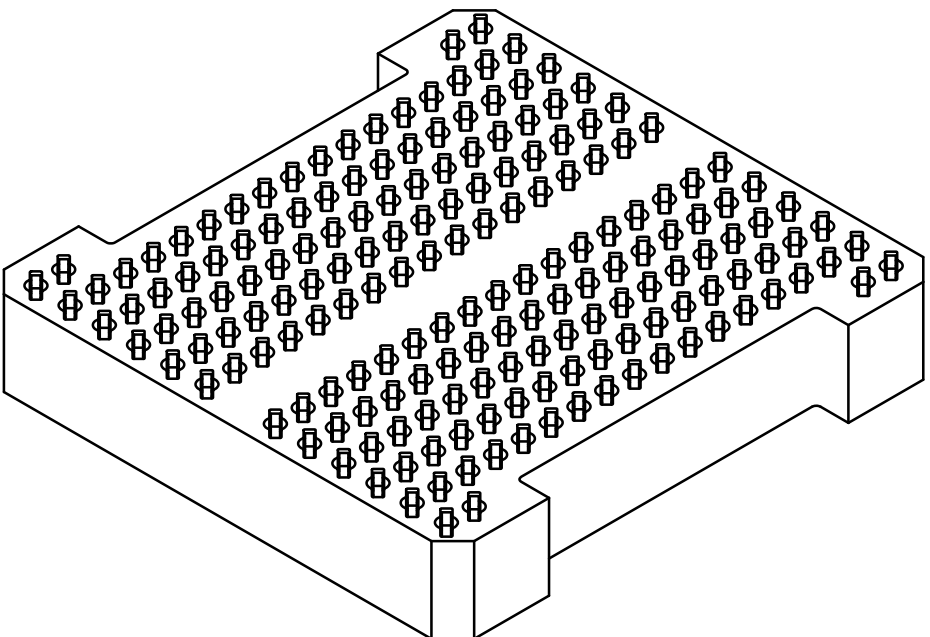
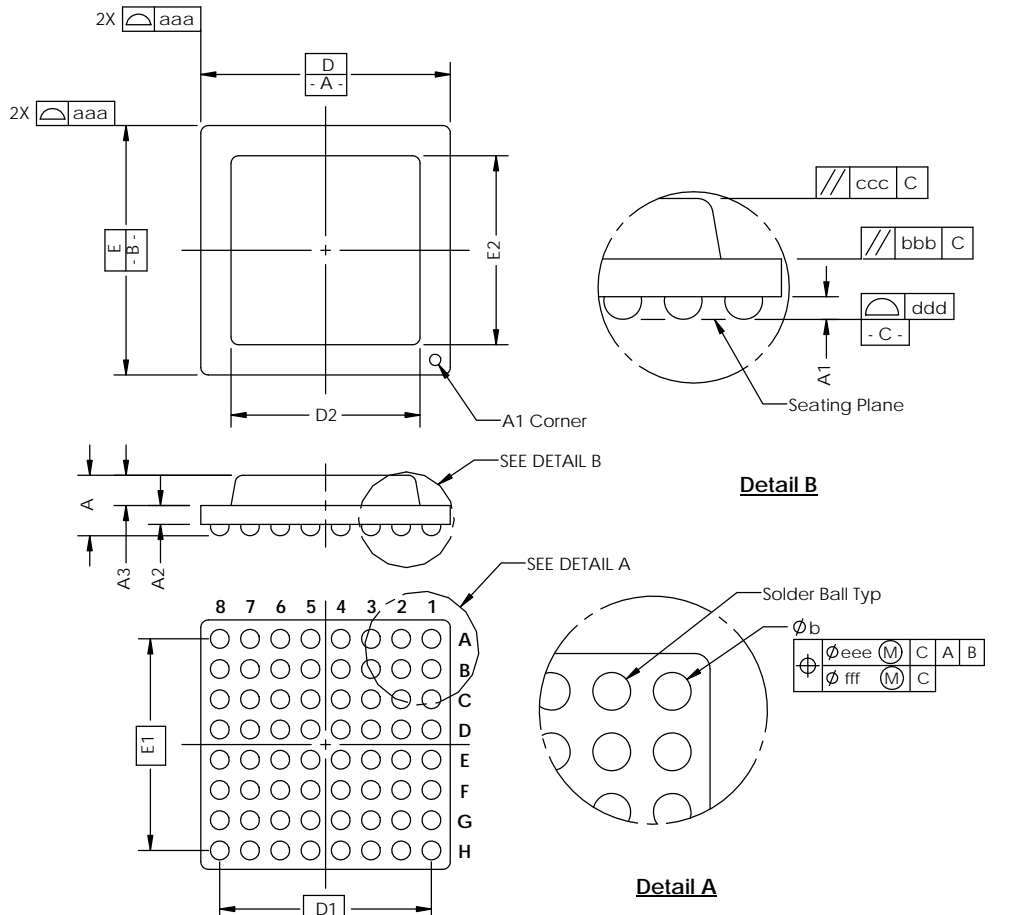
UNLESS OTHERWISE SPECIFIED DIMENSIONS ARE IN MILLIMETERS DIMS APPLY AFTER PLATING TOLERANCES UNLESS OTHERWISE NOTED

ANGLES $\pm 1^\circ$	DECIMALS XX $\pm 0.25$ XXX $\pm 0.10$ XXXX $\pm 0.050$	THE INFORMATION CONTAINED IN THIS DRAWING IS THE SOLE PROPERTY OF RAD INTERCONNECT SOLUTIONS. ANY REPRODUCTION IN PART OR WHOLE WITHOUT THE WRITTEN PERMISSION OF RAD INTERCONNECT SOLUTIONS IS PROHIBITED.	CAD GENERATED DRAWING DO NOT MANUALLY UPDATE		7115 NORTHLAND TERRACE SUITE 400 BROOKLYN PARK, MN 55428 (763) 509-0066
DRAWING APPROVALS		<b>SCKT, 178GRY11X11.5-0.80X0.65</b>			
NAME W. Butterfield	DATE 08/30/12	DRAWING NO. <b>104802-0006</b>			
NAME K. Wilson	DATE 08/30/12	SHEET <b>A</b>			
THIRD ANGLE PROJECTION		SEE BOM			



SOCKET FOR DEVICES THAT ARE WITHIN THESE SPECIFICATIONS					
Lead Count	N	178	Package Size	D	11.00
Columns	ND	12		E	11.50
Rows	NE	17	Ball Spacing	D1	9.60
Pitch	e	0.80X0.65		E1	10.40
Ball Size	b	0.30±0.05	Encapsulant/ Top Size	D2	n/a
Total Thickness	A	N/A		E2	n/a
Ball Height	A1	0.225 Min	Pattern Style	Full Grid	
Substrate Thickness	A2	N/A	Perimeter Rows	n/a	
Top Thickness	A3	N/A	Center Array	n/a	
Form Tolerances					
Edge	aaa	0.20	Bottom	ddd	0.15
Substrate	bbb	0.20	Position	eee	0.20
Top	ccc	0.20	Position	fff	0.08

All dimensions are in millimeters.  
\*See footprint specification for pattern details.



**Generic Representation with Full Grid Array**

THE INFORMATION CONTAINED IN THIS DRAWING IS THE SOLE PROPERTY OF R&D INTERCONNECT SOLUTIONS. ANY REPRODUCTION IN PART OR WHOLE WITHOUT THE WRITTEN PERMISSION OF R&D INTERCONNECT SOLUTIONS IS PROHIBITED.

UNLESS OTHERWISE SPECIFIED  
- DIMENSIONS ARE IN MILLIMETERS  
- DIMS APPLY AFTER PLATING  
TOLERANCES UNLESS OTHERWISE NOTED: DECIMALS  
ANGLES X.X ±0.25  
X.XX ±0.10  
X.XXX ±0.050

LEGEND:  
 NOTE CALLOUT  
 REVISION CHANGE  
 ITEM NUMBER

7115 NORTHLAND TERRACE, SUITE 400  
BROOKLYN PARK, MN 55428  
(763) 509-0066

**SCKT, 178GRY11X11.5-0.80X0.65**

REV	CAD FORUM	DRAWING NO.	REV
C	SOLIDWORKS	104802-0006	A
SCALE	MATERIAL	See Page 1	
		2 of 2	