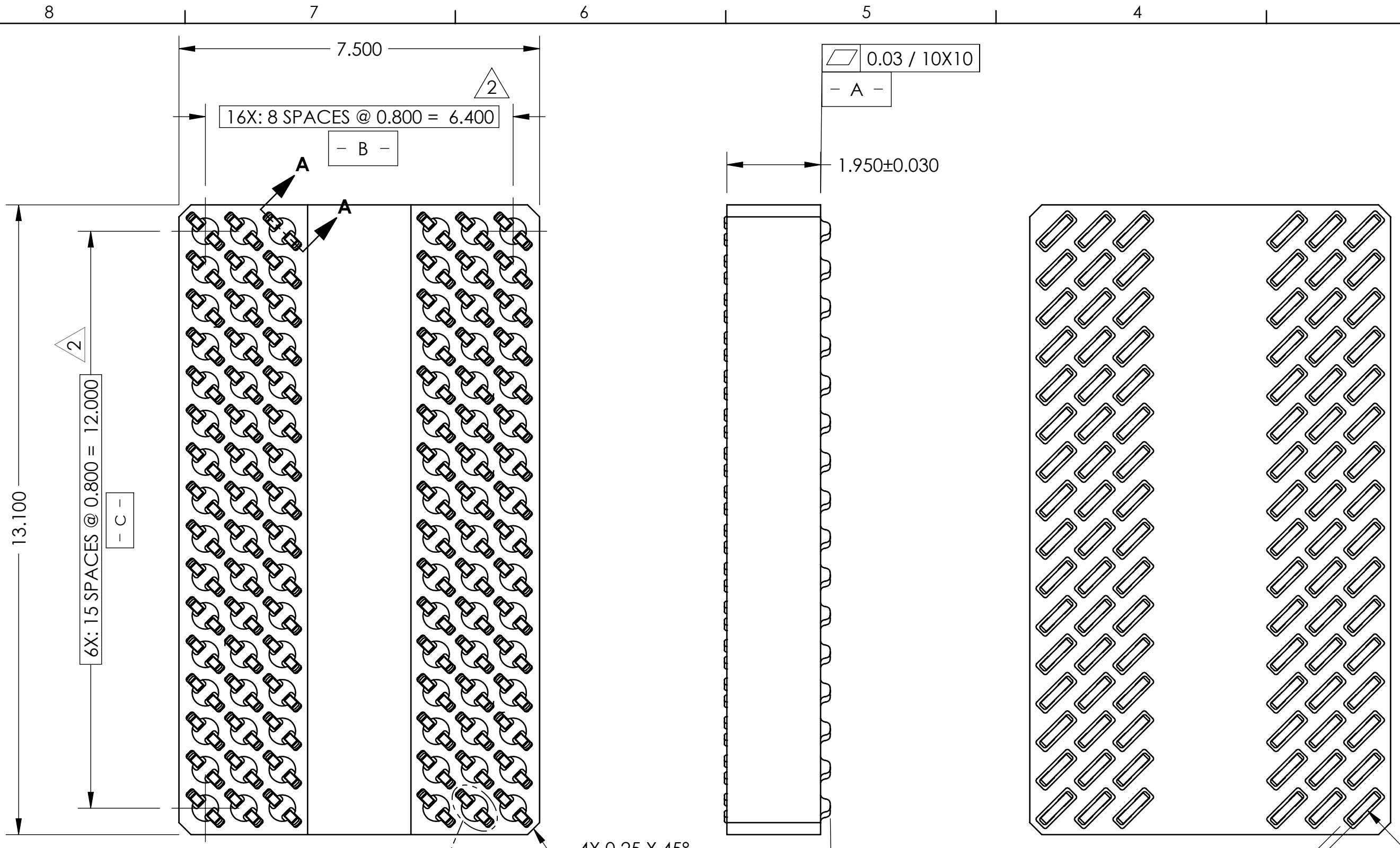
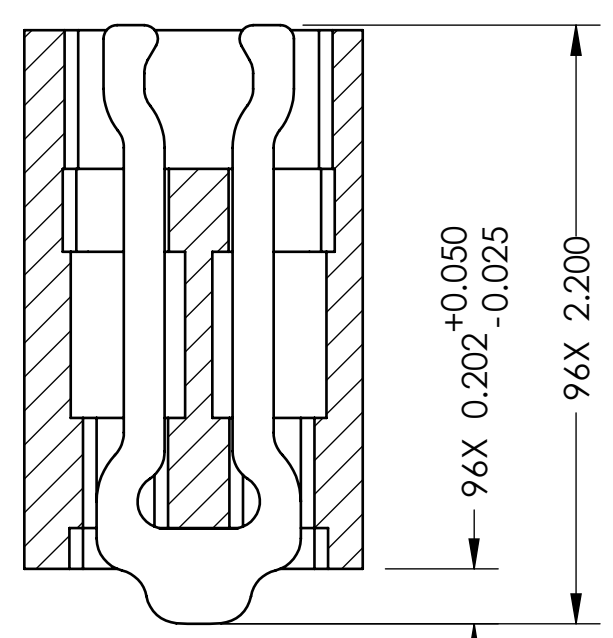
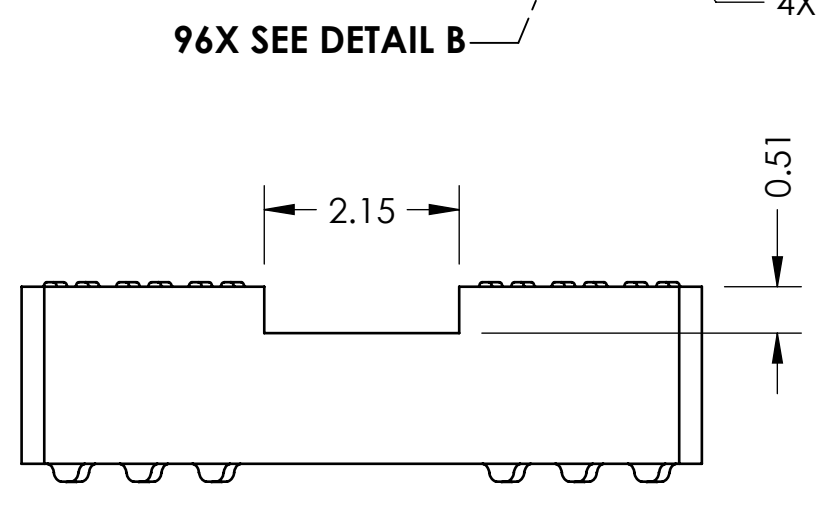


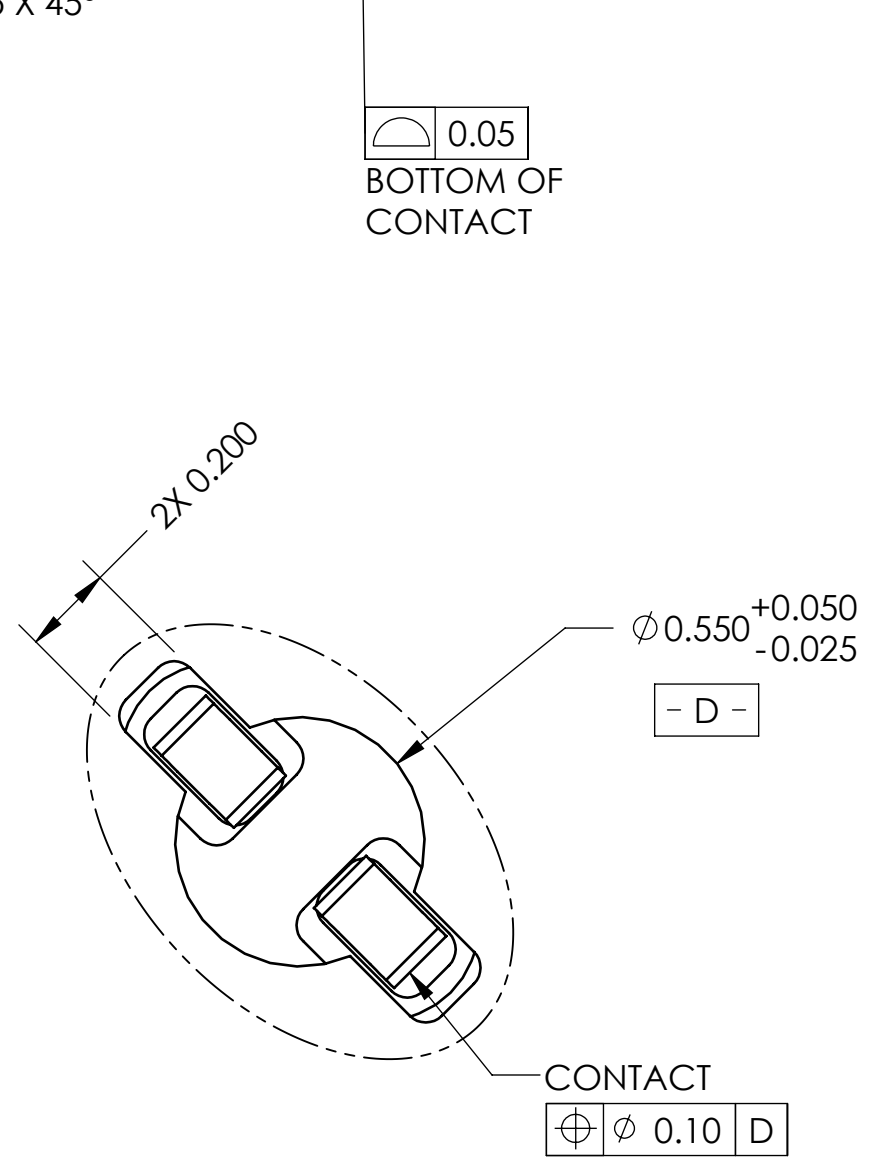
REV	ECO	BY	DESCRIPTION	APV	DATE
A	-	KP	Initial Design	MP	09/09/08
B	30897	JN	Updated Drawing Format	SK	09/15/11
C	31633	RS	Added notes 6 and 7	RS	04/14/15
D	31803	RS	Was 1.980±0.030	RS	10/24/16



- Notes:
- Footprint part number is 104311-0058.
 - Locates center of contact slots.
 - Press size: 7.5 x 13.1
 - Datum **- B -** and **- C -** determined by $\varnothing 0.550$ opening in corner slots.
 - Unless otherwise noted, all features located $\varnothing 0.10$ A B C.
 - Stencil Flex 104553-0071 (sold separately).
 - Press Device 103864-0060 (sold separately).



SECTION A-A
SCALE 3:1



DETAIL B (96X)
SCALE 5:1

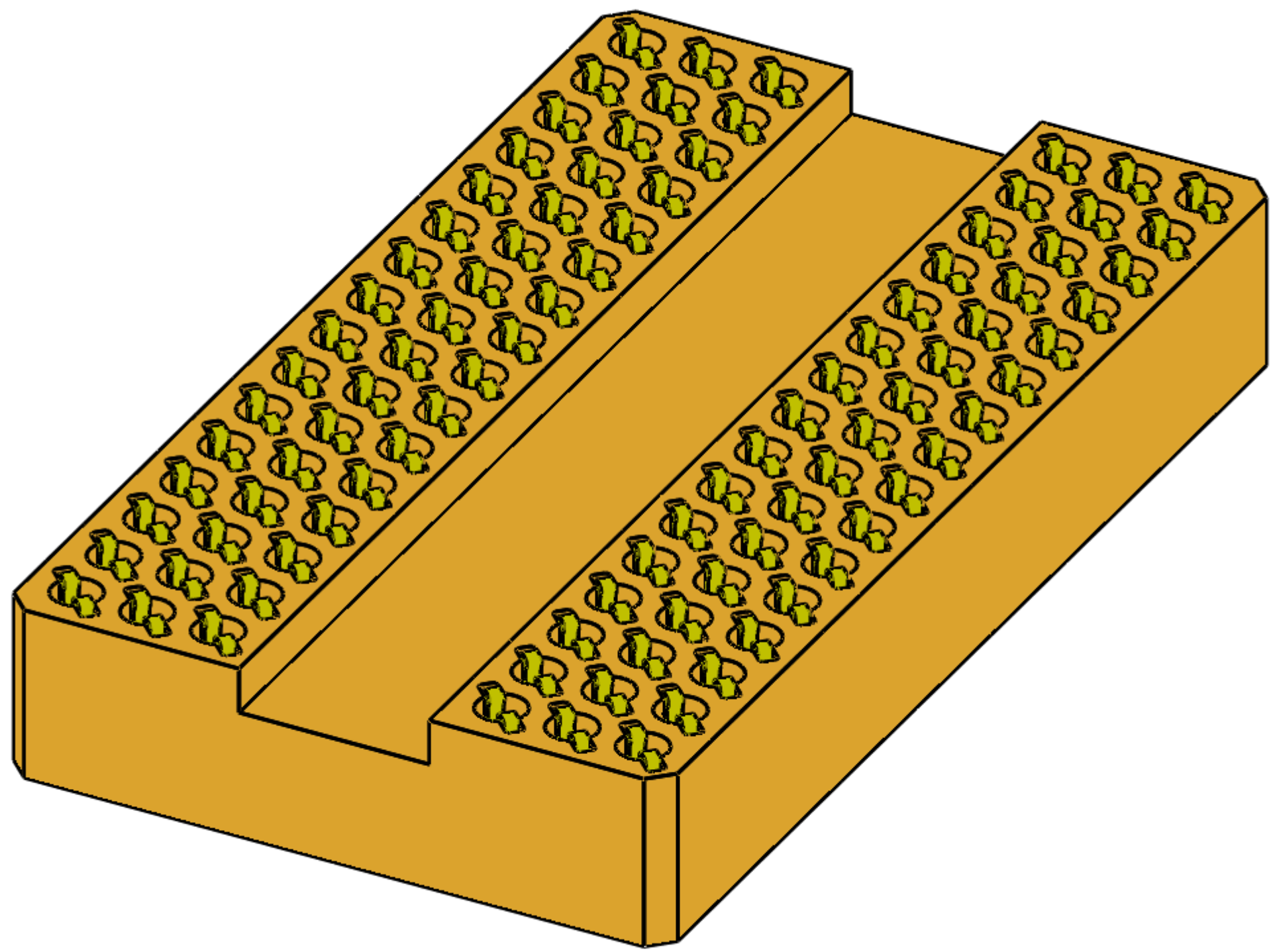
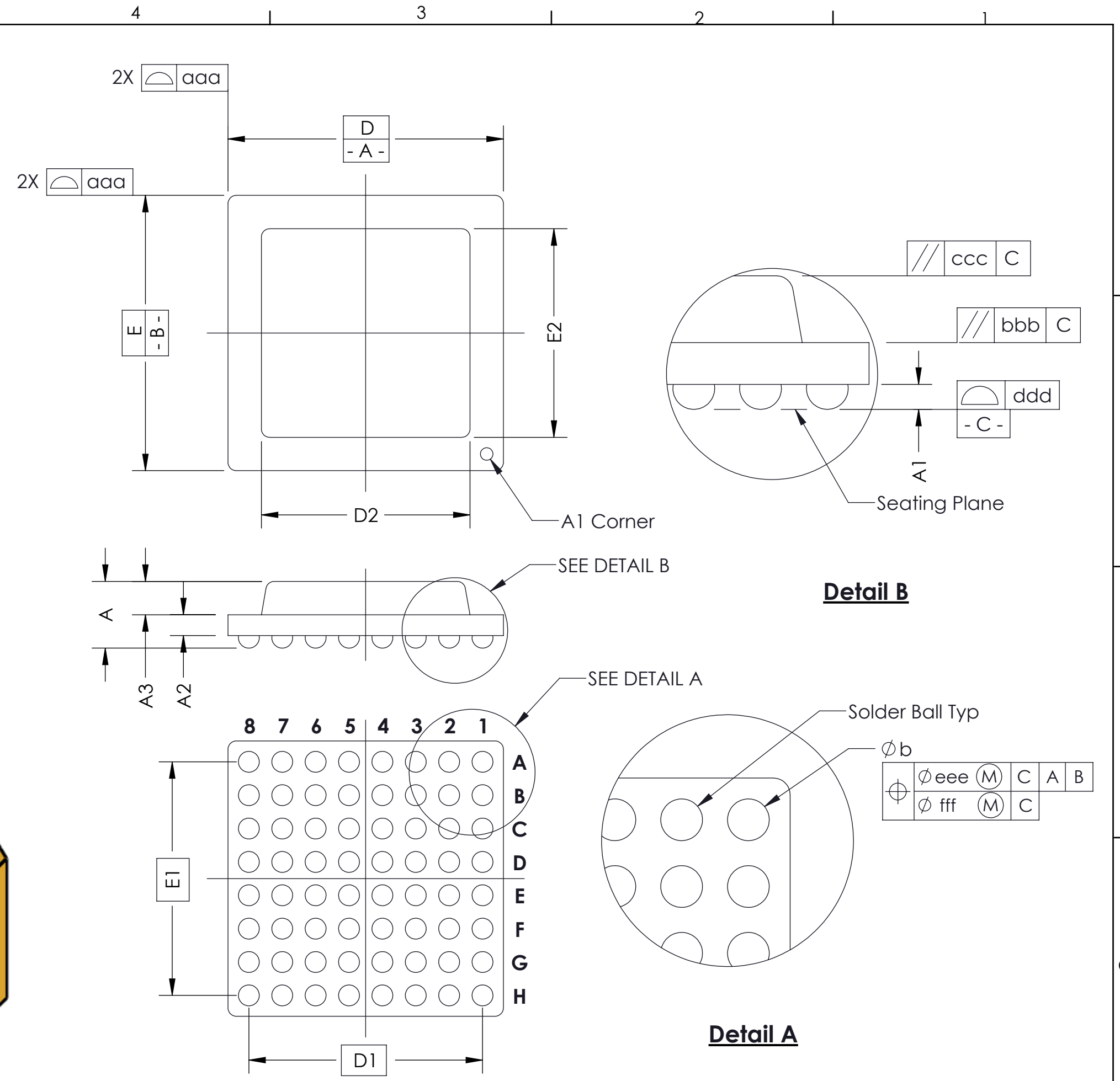
CONTACT
 $\varnothing 0.10$

CONTACT THICKNESS
WITH PLATING
(0.163)

UNLESS OTHERWISE SPECIFIED - DIMENSIONS ARE IN MILLIMETERS - DIMS APPLY AFTER PLATING TOLERANCES UNLESS OTHERWISE NOTED: ANGLES ±1° DECIMALS X.X ±0.25 X.XX ±0.10 X.XXX ±0.050		THE INFORMATION CONTAINED IN THIS DRAWING IS THE SOLE PROPERTY OF HSIO TECHNOLOGIES, LLC. ANY REPRODUCTION IN PART OR WHOLE WITHOUT THE WRITTEN PERMISSION OF HSIO TECHNOLOGIES, LLC, IS PROHIBITED.	
CAD GENERATED DRAWING DO NOT MANUALLY UPDATE		HSIO TECHNOLOGIES, LLC. 13400 68TH AVENUE NORTH MAPLE GROVE, MINNESOTA 55311. 763-447-6260	
DRAWING APPROVALS		TITLE CONN, 96GRY7.5X13.1-0.80	
NAME	DATE	DRAWN BY: K. Pitney 09/09/08	
APPROVED	DATE	APPROVED BY: M. Peery 09/09/08	
THIRD ANGLE PROJECTION		SCALE: C	CAD FORMAT: SOLIDWORKS
LEGEND: X NOTE CALLOUT 1 REVISION CHANGE X ITEM NUMBER		DRAWING NO.: 105526-0015	REV.: D
		MATERIAL: SEE BOM	SHEET: 1 of 2

SOCKET FOR DEVICES THAT ARE WITHIN THESE SPECIFICATIONS				
Lead Count	N	96	Package Size	D 7.50
Columns	ND	9		E 13.10
Rows	NE	16	Ball Spacing	D1 6.40
Pitch	e	0.80		E1 12.00
Ball Size	b	0.45±0.05	Encapsulant/Top Size	D2 n/a
Total Thickness	A	N/A		E2 n/a
Ball Height	A1	0.275 Min	Pattern Style	Irregular*
Substrate Thickness	A2	N/A	Perimeter Rows	n/a
Top Thickness	A3	N/A	Center Array	n/a
Form Tolerances				
Edge	aaa	0.20	Bottom	ddd 0.15
Substrate	bbb	0.20	Position	eee 0.20
top	ccc	0.20	Position	fff 0.08

All dimensions are in millimeters.
*See footprint specification for pattern details.



Generic Representation with Full Grid Array

THE INFORMATION CONTAINED IN THIS DRAWING IS THE SOLE PROPERTY OF HSIO TECHNOLOGIES, LLC. ANY REPRODUCTION IN PART OR WHOLE WITHOUT THE WRITTEN PERMISSION OF HSIO TECHNOLOGIES, LLC. IS PROHIBITED.			
UNLESS OTHERWISE SPECIFIED - DIMENSIONS ARE IN MILLIMETERS - DIMS APPLY AFTER PLATING TOLERANCES UNLESS OTHERWISE NOTED: DECIMALS ANGLES XX ±0.25 ±1* XXX ±0.10 X.XXX ±.050		HSIO TECNOLOGIES, LLC. 13400 68TH AVENUE NORTH MAPLE GROVE, MINNESOTA 55311. 763-447-6260 CONN, 96GRY7.5X13.1-0.80	
LEGEND:	NOTE CALLOUT	SCALE	REV.
(X)	REVISION CHANGE	C	D
(1)	ITEM NUMBER	See Page 1	2 of 2