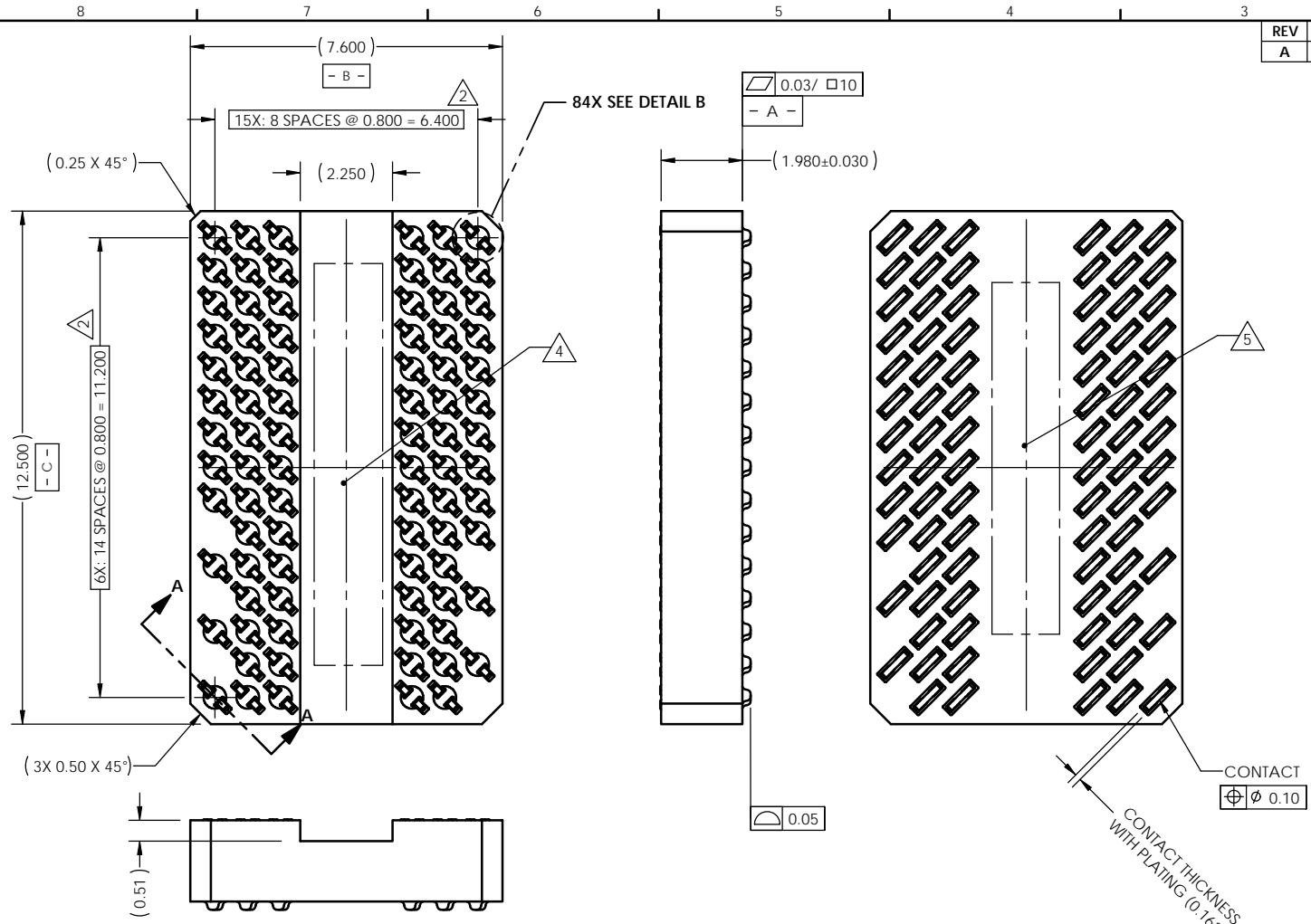
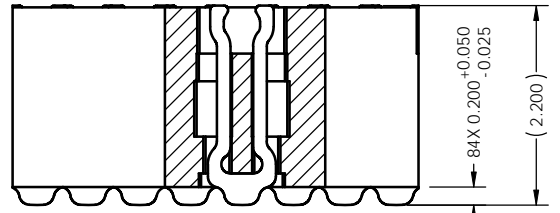


REV	ECO	BY	DESCRIPTION	APV	DATE
A		KP	Initial Design	MP	11/13/09

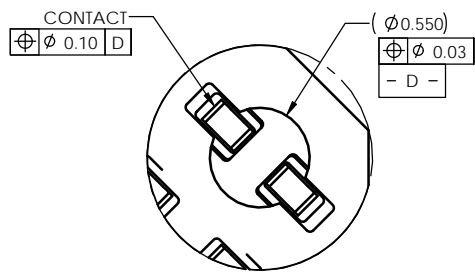


- Notes:
- Footprint part number is 104311-0105.
  - Locates center of contact.
  - Press size: 8.0 x 12.5
  - Permanently mark part number and rev. level in area shown. Characters to be 1.5 high.
  - Permanently mark company Logo in area shown. Characters to be 4.0 high.

PARTS LIST	
Part Number	Description
105526-0037	SOCKET, 84GRY7.6X12.5-0.80
105528-0037	CS, 84GRY7.6X12.5-0.80
103864-0075	PRESS, DEV INS, 8.0X12.5 (SOLD SEP.)
104553-0108	STEN,FLEX,84GRY7.6X12.5-0.80 (SOLD SEP.)



**SECTION A-A**  
Scale 2:1

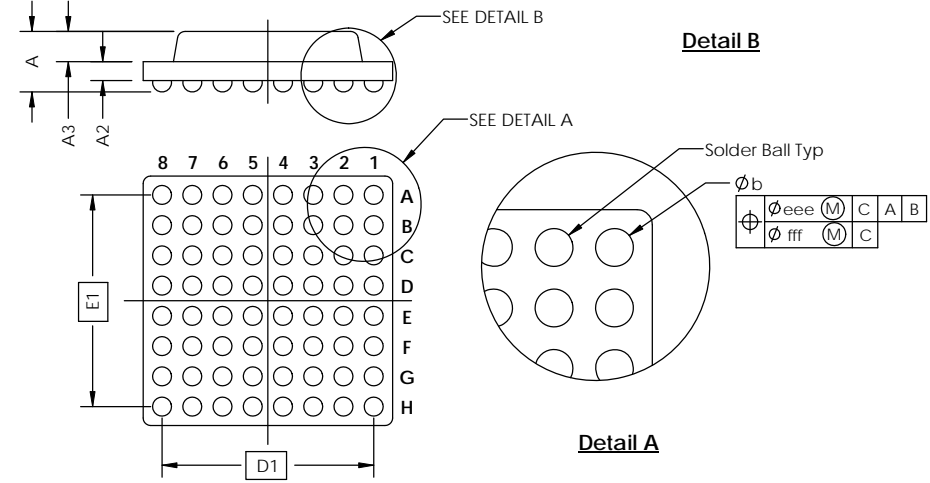
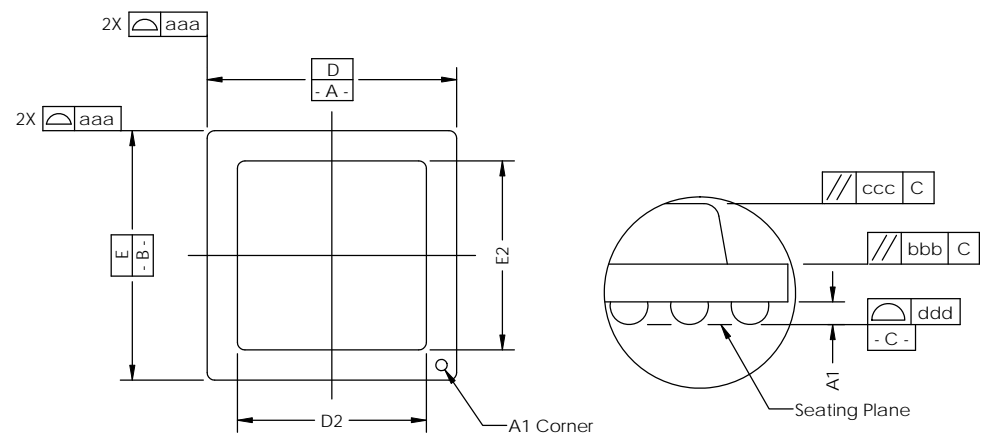
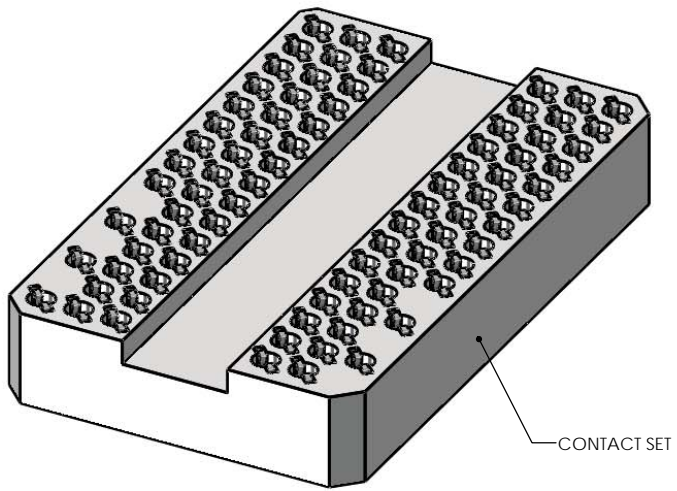


**DETAIL B 84X**  
SCALE 4:1

UNLESS OTHERWISE SPECIFIED DIMENSIONS ARE IN MILLIMETERS DIM'S APPLY AFTER PLATING TOLERANCES UNLESS OTHERWISE NOTED:		THE INFORMATION CONTAINED IN THIS DRAWING IS THE SOLE PROPERTY OF CASCADE MICROTECH, INC. ANY REPRODUCTION IN PART OR WHOLE WITHOUT THE WRITTEN PERMISSION OF CASCADE MICROTECH, INC. IS PROHIBITED.	
DRAWING APPROVALS		7115 NORTHLAND TERRACE SUITE 400 BROOKLYN PARK, MN 55428 (763) 509-0066	
NAME K. Pitney	DATE 11/13/09	<b>SCKT,84GRY7.6X12.5-0.80, DS</b>	
APPROV. M. Peery	DATE 11/13/09		
LEGEND:		SCALE C	SHEET 1 of 2
(A) NOTE CALLOUT	(R) REVISION CHANGE	SEE BOM	
(X) ITEM NUMBER		MATERIAL	
THIRD ANGLE PROJECTION		PARTS LIST	

SOCKET FOR DEVICES THAT ARE WITHIN THESE SPECIFICATIONS					
Lead Count	<b>N</b>	84	Package Size	<b>D</b>	7.60
Columns	<b>ND</b>	9		<b>E</b>	12.50
Rows	<b>NE</b>	15	Ball Spacing	<b>D1</b>	6.40
Pitch	<b>e</b>	0.80		<b>E1</b>	11.20
Ball Size	<b>b</b>	0.45±0.05	Encapsulant/ Top Size	<b>D2</b>	n/a
Total Thickness	<b>A</b>	N/A		<b>E2</b>	n/a
Ball Height	<b>A1</b>	0.275 Min	Pattern Style	Irregular*	
Substrate Thickness	<b>A2</b>	N/A	Perimeter Rows	n/a	
Top Thickness	<b>A3</b>		Center Array	n/a	
Form Tolerances					
Edge	<b>aaa</b>	0.20	Bottom	<b>ddd</b>	0.15
Substrate	<b>bbb</b>	0.20	Position	<b>eee</b>	0.20
Top	<b>ccc</b>	0.20	Position	<b>fff</b>	0.08

All dimensions are in millimeters.  
\*See footprint specification for pattern details.



**Generic Representation with Full Grid Array**

THE INFORMATION CONTAINED IN THIS DRAWING IS THE SOLE PROPERTY OF CASCADE MICROTECH, INC. ANY REPRODUCTION IN PART OR WHOLE WITHOUT THE WRITTEN PERMISSION OF CASCADE MICROTECH, INC. IS PROHIBITED.

UNLESS OTHERWISE SPECIFIED  
- DIMENSIONS ARE IN MILLIMETERS  
- DIMES APPLY AFTER PLATING  
TOLERANCES UNLESS OTHERWISE NOTED: DECIMALS  
ANGLES X.X ±0.25  
X.XX ±0.10  
X.XXX ±0.050

LEGEND:  
NOTE CALLOUT  
REVISION CHANGE  
ITEM NUMBER

7115 NORTHLAND TERRACE SUITE 400  
BROOKLYN PARK, MN 55428  
(763) 509-0066

**SCKT,84GRY7.6X12.5-0.80, DS**

CAD FORUM  
SOLIDWORKS  
DRAWING NO: **105526-0037**  
SCALE: See Page 1  
REV: **A**  
SHEET: 2 of 2