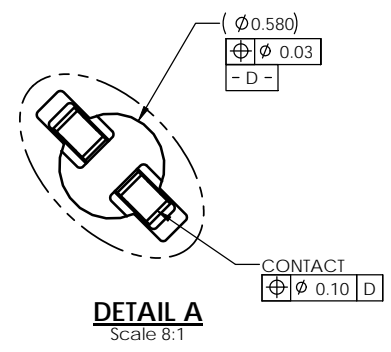
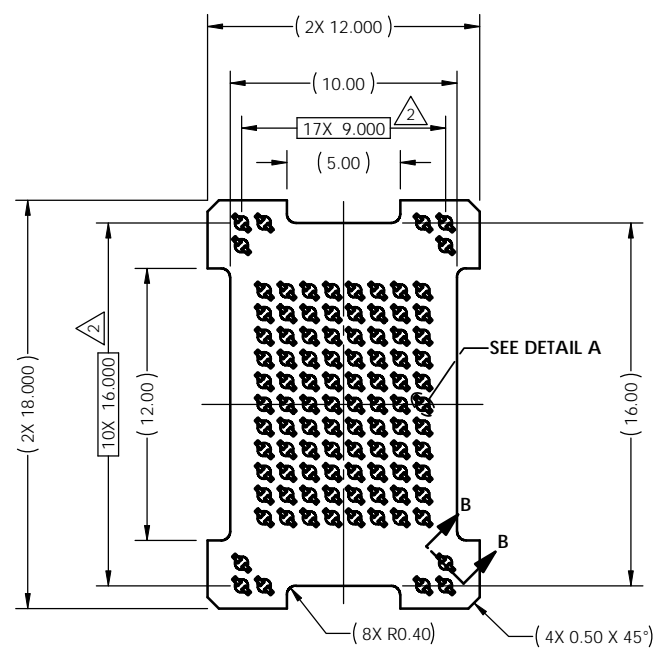
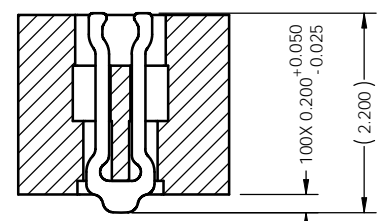
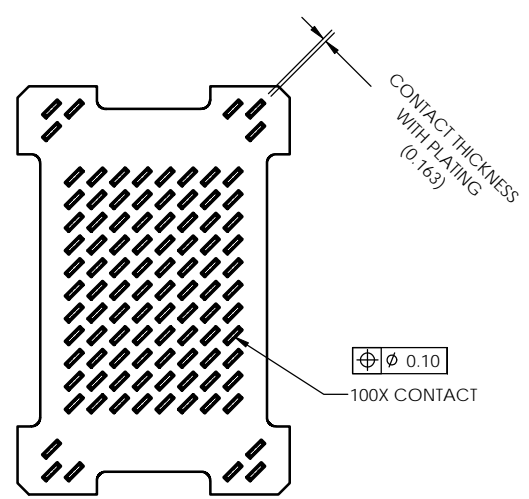
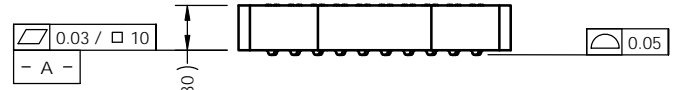


REV	ECO	BY	DESCRIPTION	APV	DATE
A	--	CW	Initial Design	MP	07/13/09
B	30048	KP	Update HSG, Delete Notes 4 & 5	MP	12/23/09



- Notes:
- Footprint part number is 104311-0146.
 - Dimension locates center of contact.
 - Press size is 12.00 x 18.00.

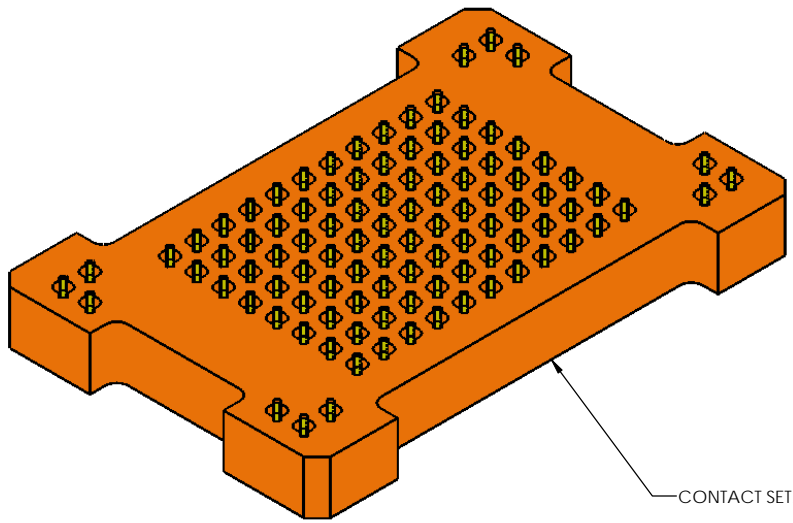
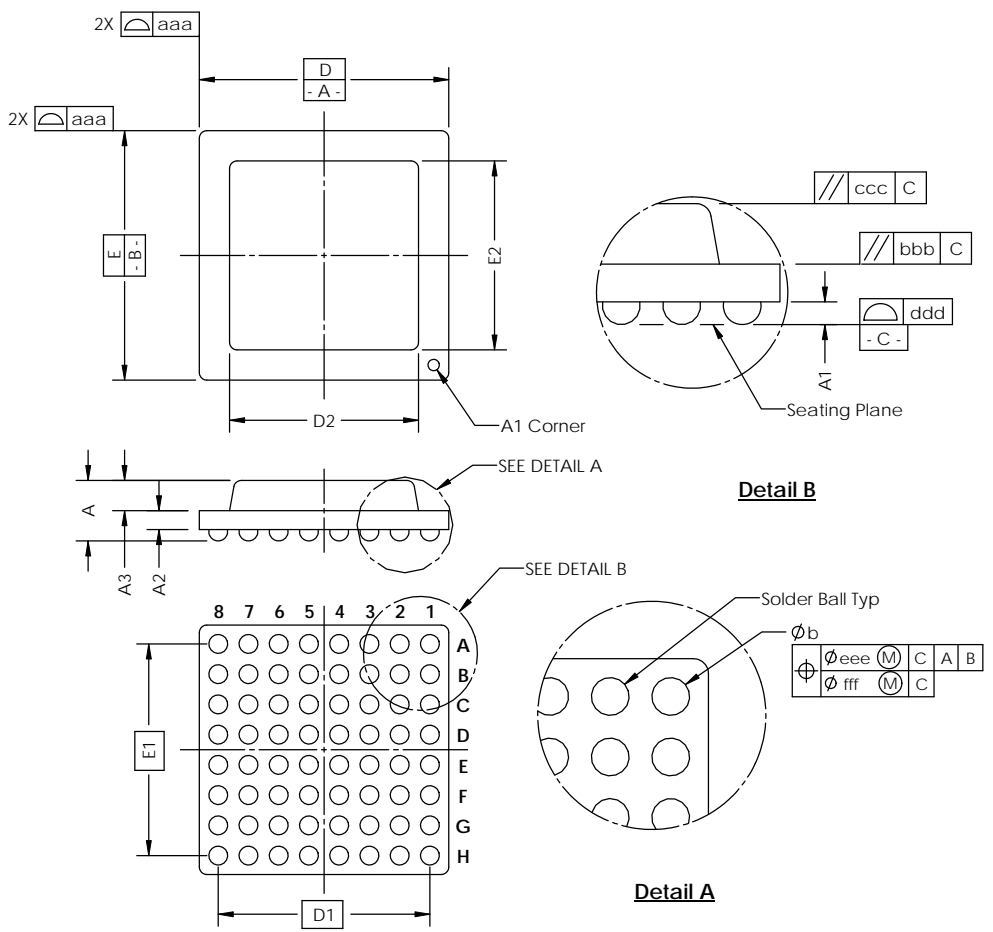


Parts List	
Part Number	Description
105526-0057	SCKT, 100GRY12x18-1.0
105528-0057	CS, 100GRY12X18-1.0
103864-0083	PRESS, DEV INS, 12X18, (SOLD SEP)
104553-0133	STEN, FLEX, 100GRY12X18-1.0 (SOLD SEP)

UNLESS OTHERWISE SPECIFIED DIMENSIONS ARE IN MILLIMETERS DIM'S APPLY AFTER PLATING TOLERANCES UNLESS OTHERWISE NOTED:		THE INFORMATION CONTAINED IN THIS DRAWING IS THE SOLE PROPERTY OF CASCADE MICROTECH, INC. ANY REPRODUCTION IN PART OR WHOLE WITHOUT THE WRITTEN PERMISSION OF CASCADE MICROTECH, INC. IS PROHIBITED.	
DRAWING APPROVALS		7115 NORTHLAND TERRACE SUITE 400 BROOKLYN PARK, MN 55428 (763) 509-0066	
NAME	DATE	SCKT, 100GRY12X18-1.00	
C. Wymer	07/02/09		
APPROV	DATE	CASCADE MICROTECH	
M. Peery	07/13/09	CASCADE MICROTECH	
THIRD ANGLE PROJECTION		SCALE	SHEET
		C	1 of 2
LEGEND:		PARTIAL	
	NOTE CALLOUT	SEE BOM	
	REVISION CHANGE	SEE BOM	
	ITEM NUMBER	SEE BOM	

SOCKET FOR DEVICES THAT ARE WITHIN THESE SPECIFICATIONS					
Lead Count	N	100	Package Size	D	12.00
Columns	ND	10		E	18.00
Rows	NE	17	Ball Spacing	D1	9.00
Pitch	e	1.00		E1	16.00
Ball Size	b	0.45±0.05	Encapsulant/ Top Size	D2	N/A
Total Thickness	A	N/A		E2	N/A
Ball Height	A1	0.275 Min	Pattern Style	Irregular*	
Substrate Thickness	A2	N/A	Perimeter Rows	N/A	
Top Thickness	A3		Center Array	N/A	
Form Tolerances					
Edge	aaa	0.20	Bottom	ddd	0.15
Substrate	bbb	0.20	Position	eee	0.20
Top	ccc	0.20	Position	fff	0.08

All dimensions are in millimeters.
*See footprint specification for pattern details.



CONTACT SET.

Generic Representation with Full Grid Array

THE INFORMATION CONTAINED IN THIS DRAWING IS THE SOLE PROPERTY OF CASCADE MICROTECH, INC. ANY REPRODUCTION IN PART OR WHOLE WITHOUT THE WRITTEN PERMISSION OF CASCADE MICROTECH, INC. IS PROHIBITED.

UNLESS OTHERWISE SPECIFIED
- DIMENSIONS ARE IN MILLIMETERS
- DIMS APPLY AFTER PLATING
TOLERANCES UNLESS OTHERWISE NOTED: DECIMALS
ANGLES X.X ±0.25
X.XX ±0.10
X.XXX ±0.050

LEGEND:
 NOTE CALLOUT
 REVISION CHANGE
 ITEM NUMBER

CASCADE MICROTECH, INC.
7115 NORTHLAND TERRACE SUITE 400
BROOKLYN PARK, MN 55428
(763) 509-0066

SCKT, 100GRY12X18-1.00

REV	DATE	BY	APP
C			

SCALE: SOLIDWORKS
MATERIAL: 105526-0057
SEE PAGE 1

SHEET 2 of 2