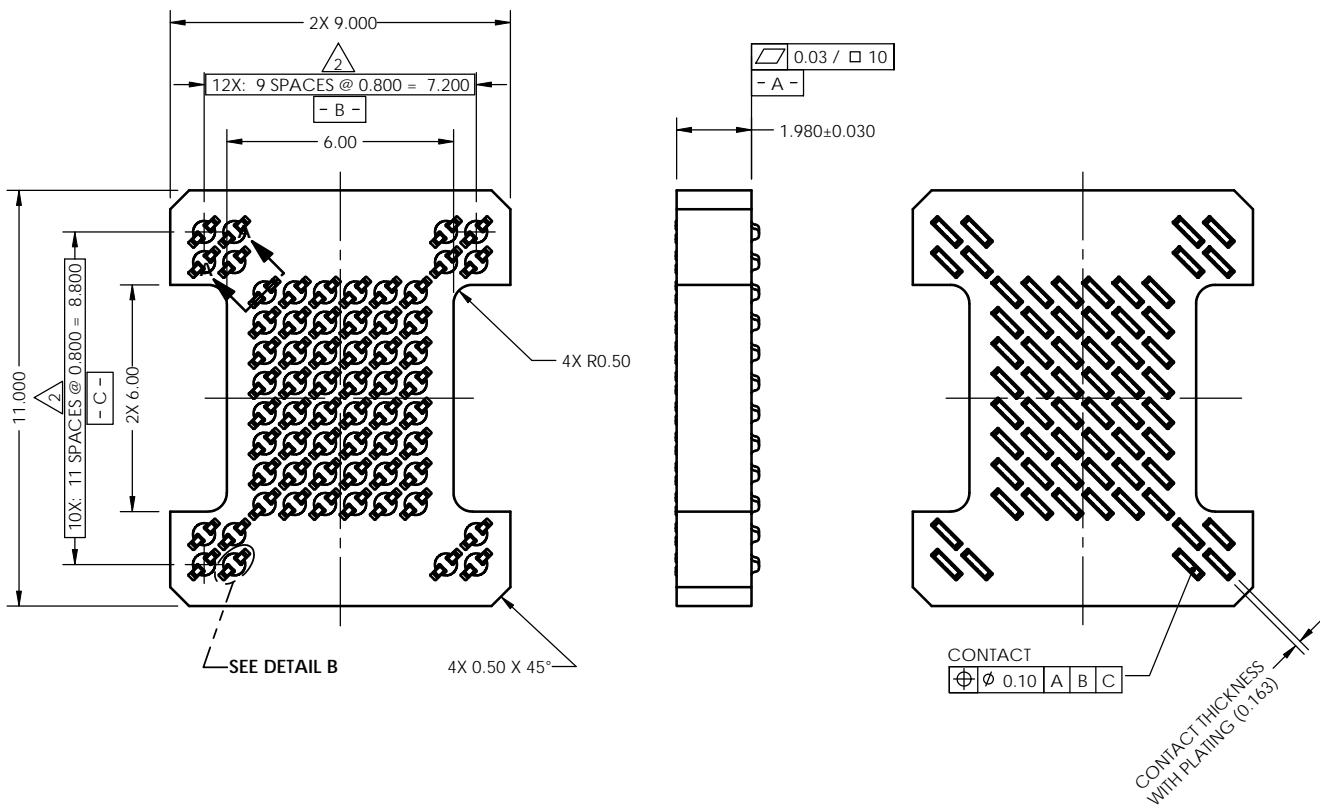
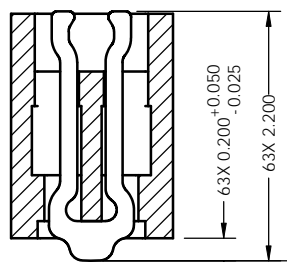
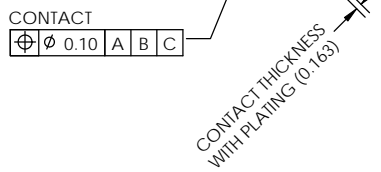


REV	ECO	BY	DESCRIPTION	APV	DATE
A	30974	SK	Initial Design	KW	12/15/11

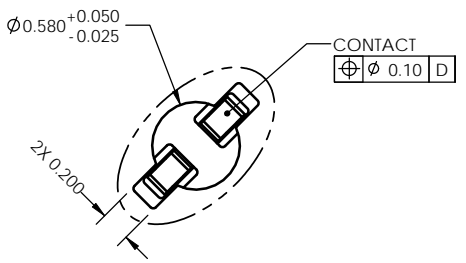


- Notes:
- Footprint part number is 104311-0303.
 - Locates center of contact slots.
 - Press size: 9 x 11
 - Datum **-B-** and **-C-** determined by $\phi 0.580$ opening in corner slots.
 - Unless otherwise noted, all features located $\phi 0.10$ **A B C**.

SEE DETAIL B




SECTION A-A
SCALE 3:1
VIEW ROTATED CW 45°



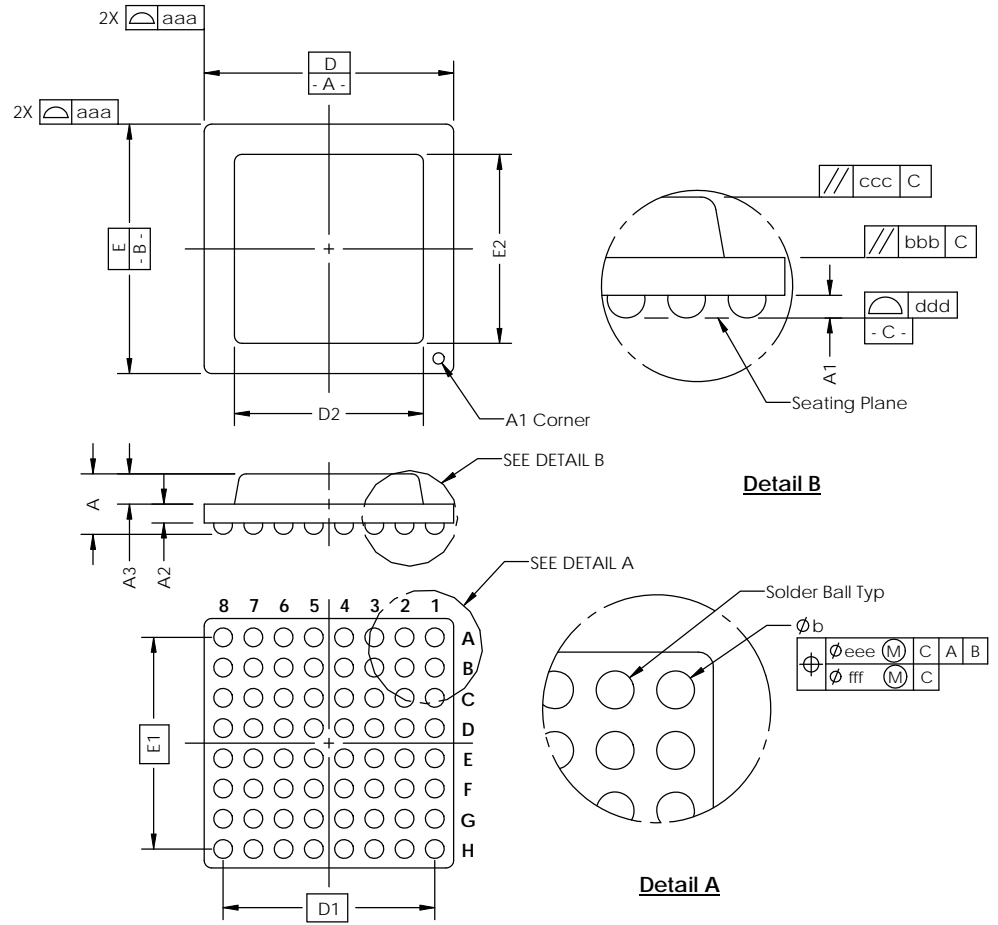
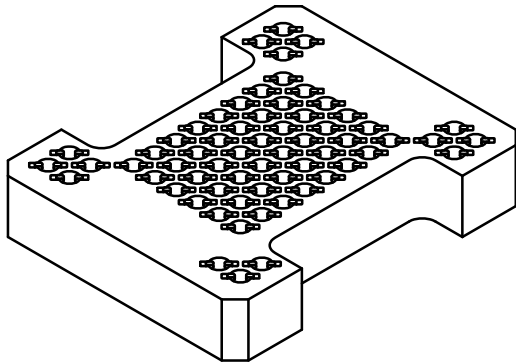
DETAIL B
SCALE 4:1

PARTS LIST	
Part Number	Description
105526-0082	SCKT, 63GRY9X11-0.80
105528-0082	CS, 63GRY9X11-0.80
103864-0048	PRESS, DEV INS, 9X11 (SOLD SEP.)
104553-0083	STEN,FLEX, 63GRY9X11-0.80 (SOLD SEP.)

UNLESS OTHERWISE SPECIFIED DIMENSIONS ARE IN MILLIMETERS DIM'S APPLY AFTER PLATING TOLERANCES UNLESS OTHERWISE NOTED:		THE INFORMATION CONTAINED IN THIS DRAWING IS THE SOLE PROPERTY OF CASCADE MICROTECH, INC. ANY REPRODUCTION IN PART OR WHOLE WITHOUT THE WRITTEN PERMISSION OF CASCADE MICROTECH, INC. IS PROHIBITED.	
CAD GENERATED DRAWING DO NOT MANUALLY UPDATE		 7115 NORTHLAND TERRACE SUITE 400 BROOKLYN PARK, MN 55428 (763) 509-0066	
DRAWING APPROVALS		SCKT, 63GRY9X11-0.80	
NAME	DATE	PART NO.	
S. Klanderud	12/14/11	105526-0082	
APPROV.	DATE	SCALE	SHEET
K. Wilson	12/14/11	C	1 of 2
THIRD ANGLE PROJECTION		SEE BOM	

SOCKET FOR DEVICES THAT ARE WITHIN THESE SPECIFICATIONS					
Lead Count	N	63	Package Size	D	9.00
Columns	ND	10		E	11.00
Rows	NE	12	Ball Spacing	D1	7.20
Pitch	e	0.80		E1	8.80
Ball Size	b	0.45±0.05	Encapsulant/ Top Size	D2	N/A
Total Thickness	A	N/A	Pattern Style	E2	N/A
Ball Height	A1	0.275 Min			IRREGULAR*
Substrate Thickness	A2	N/A	Perimeter Rows		N/A
Top Thickness	A3	N/A	Center Array		N/A
Form Tolerances					
Edge	aaa	0.20	Bottom	ddd	0.15
Substrate	bbb	0.20	Position	eee	0.20
top	ccc	0.20	Position	fff	0.08

All dimensions are in millimeters.
*See footprint specification for pattern details.



Generic Representation with Full Grid Array

<small>THE INFORMATION CONTAINED IN THIS DRAWING IS THE SOLE PROPERTY OF R&D INTERCONNECT SOLUTIONS. ANY REPRODUCTION IN PART OR WHOLE WITHOUT THE WRITTEN PERMISSION OF R&D INTERCONNECT SOLUTIONS IS PROHIBITED.</small>			
<small>UNLESS OTHERWISE SPECIFIED - DIMENSIONS ARE IN MILLIMETERS - DIMS APPLY AFTER PLATING TOLERANCES UNLESS OTHERWISE NOTED: DECIMALS ANGLES X.X ±0.25 X.XX ±0.10 X.XXX ±0.050</small>		7115 NORTHLAND TERRACE SUITE 400 BROOKLYN PARK, MN 55428 (763) 509-0066	
<h2>SKCT, 63GRY9X11-0.80</h2>			
LEGEND: NOTE CALLOUT REVISION CHANGE ITEM NUMBER	<small>DATE FORN</small> C SOLIDWORKS	<small>DRAWING NO</small> 105526-0082	<small>REV</small> A
<small>SCALE</small> See Page 1		<small>SHEET</small> 2 of 2	