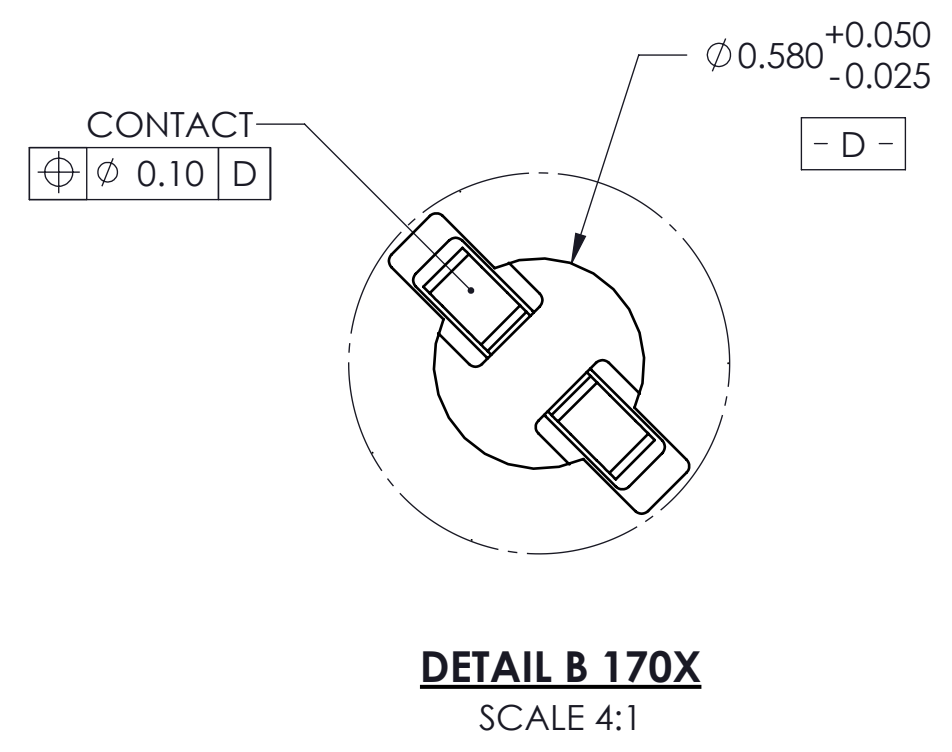
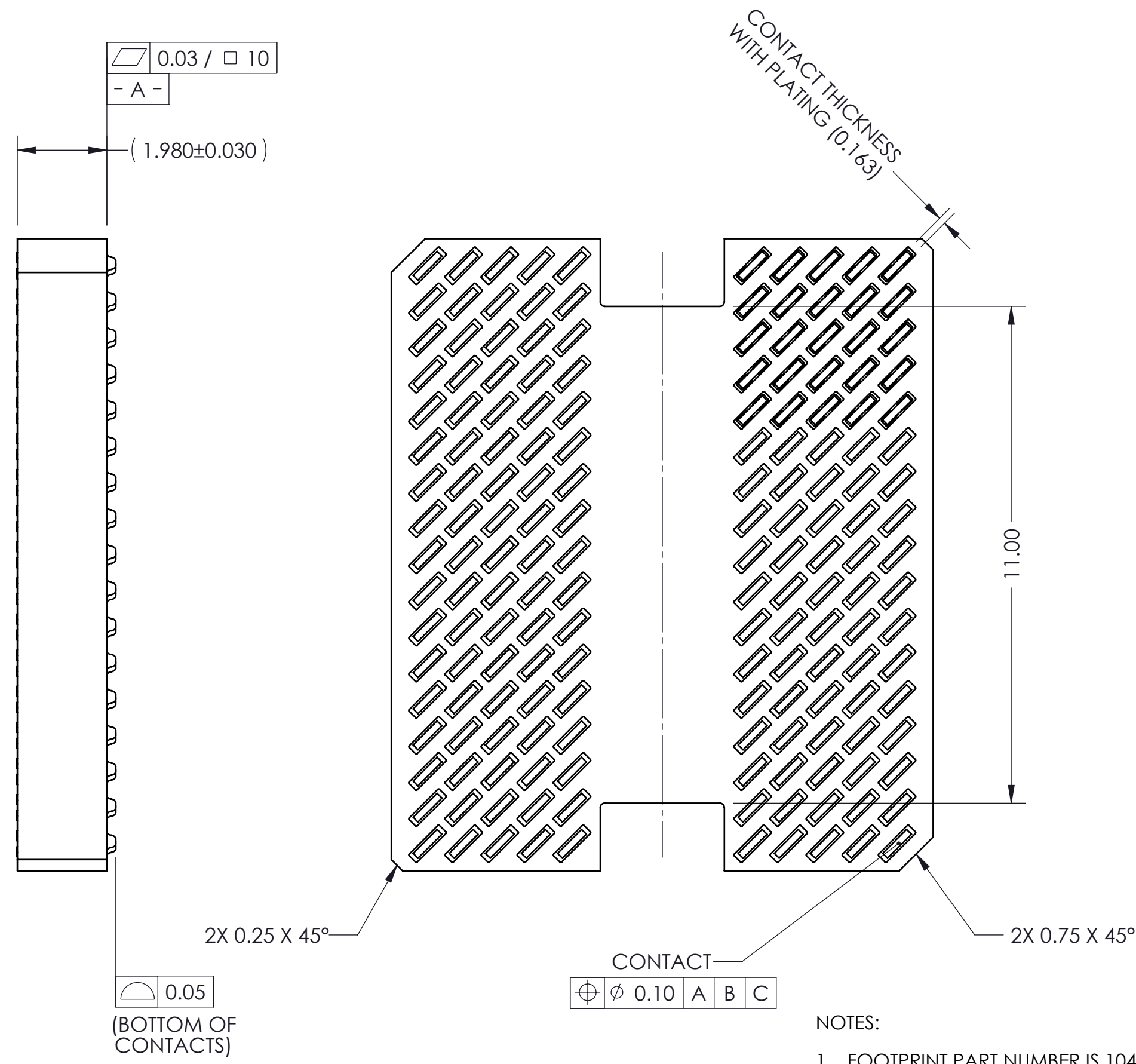
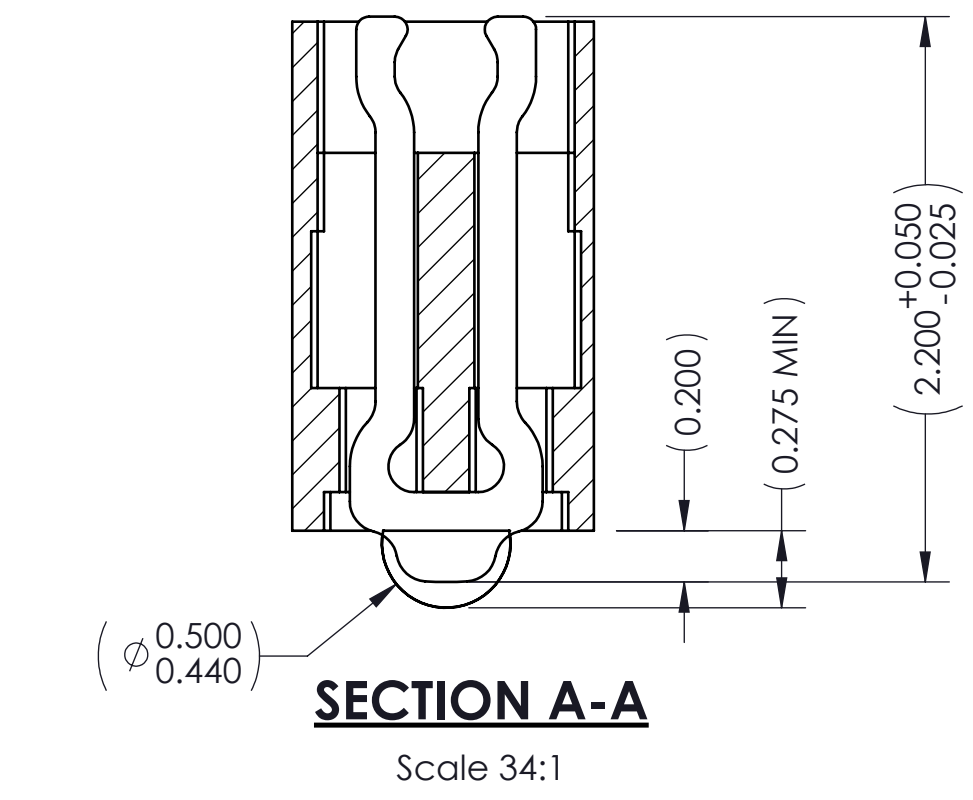
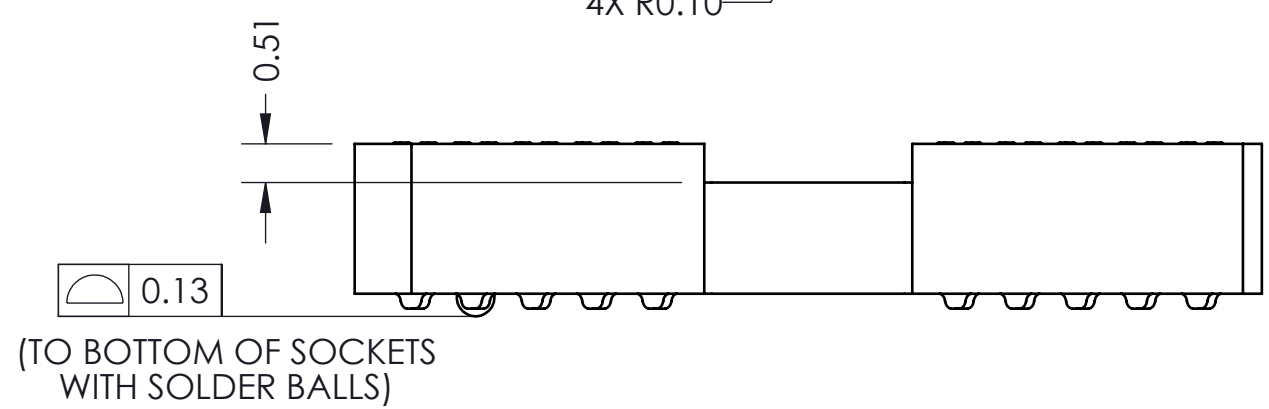
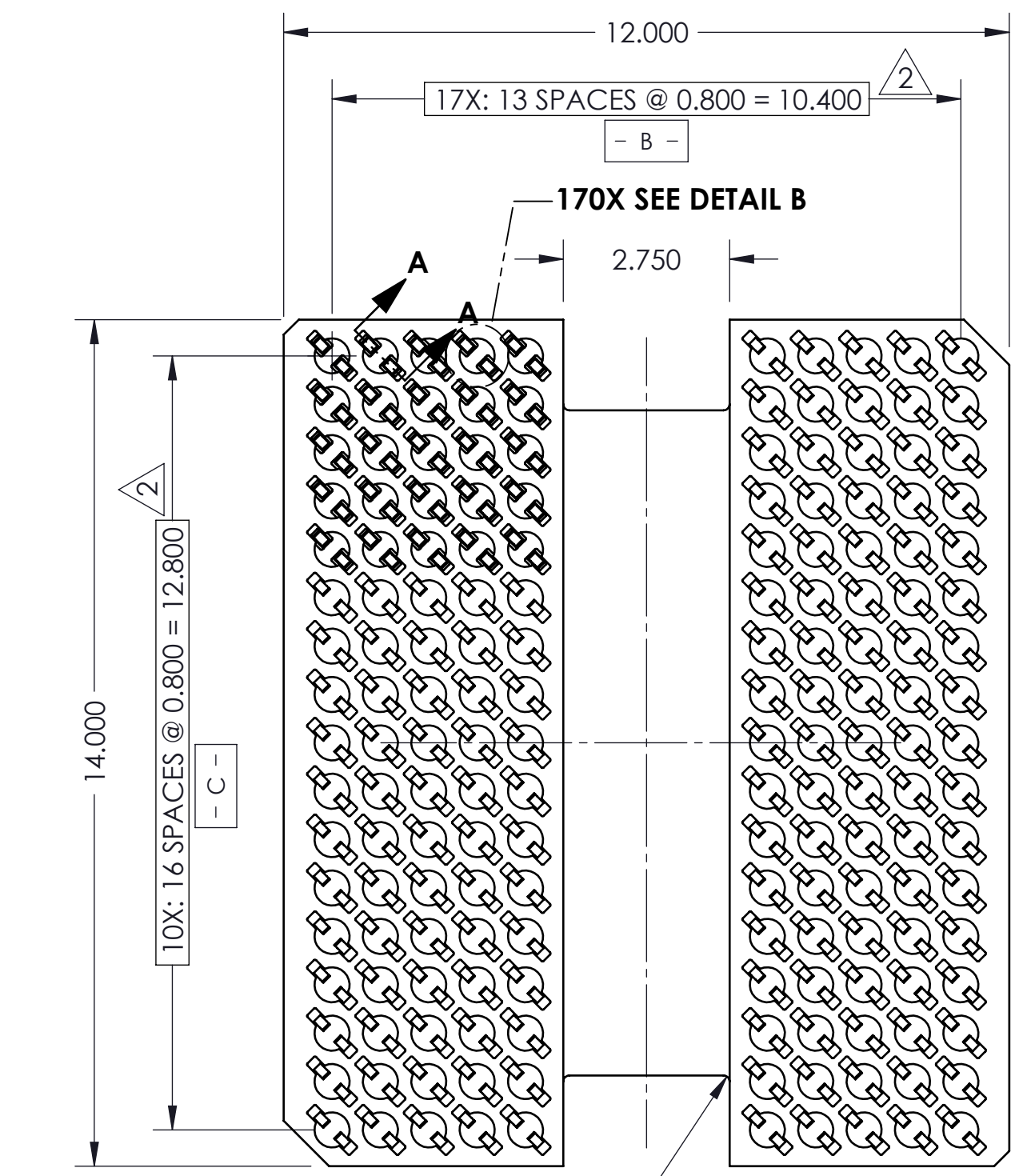


REV	ECO	BY	DESCRIPTION	APV	DATE
A	31754	PAR	INITIAL DESIGN	NSJ	04/06/16



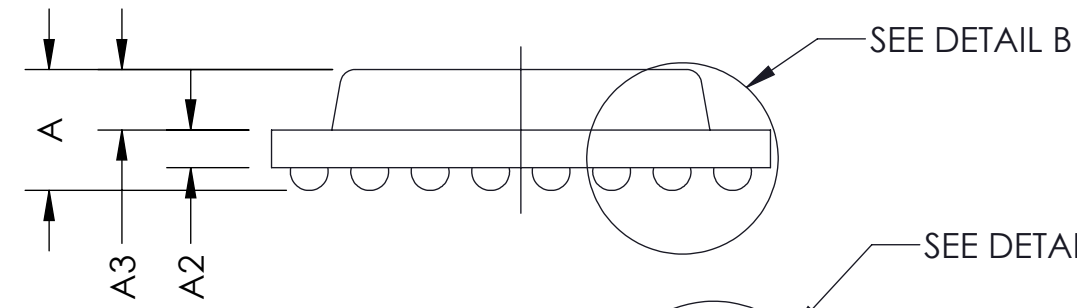
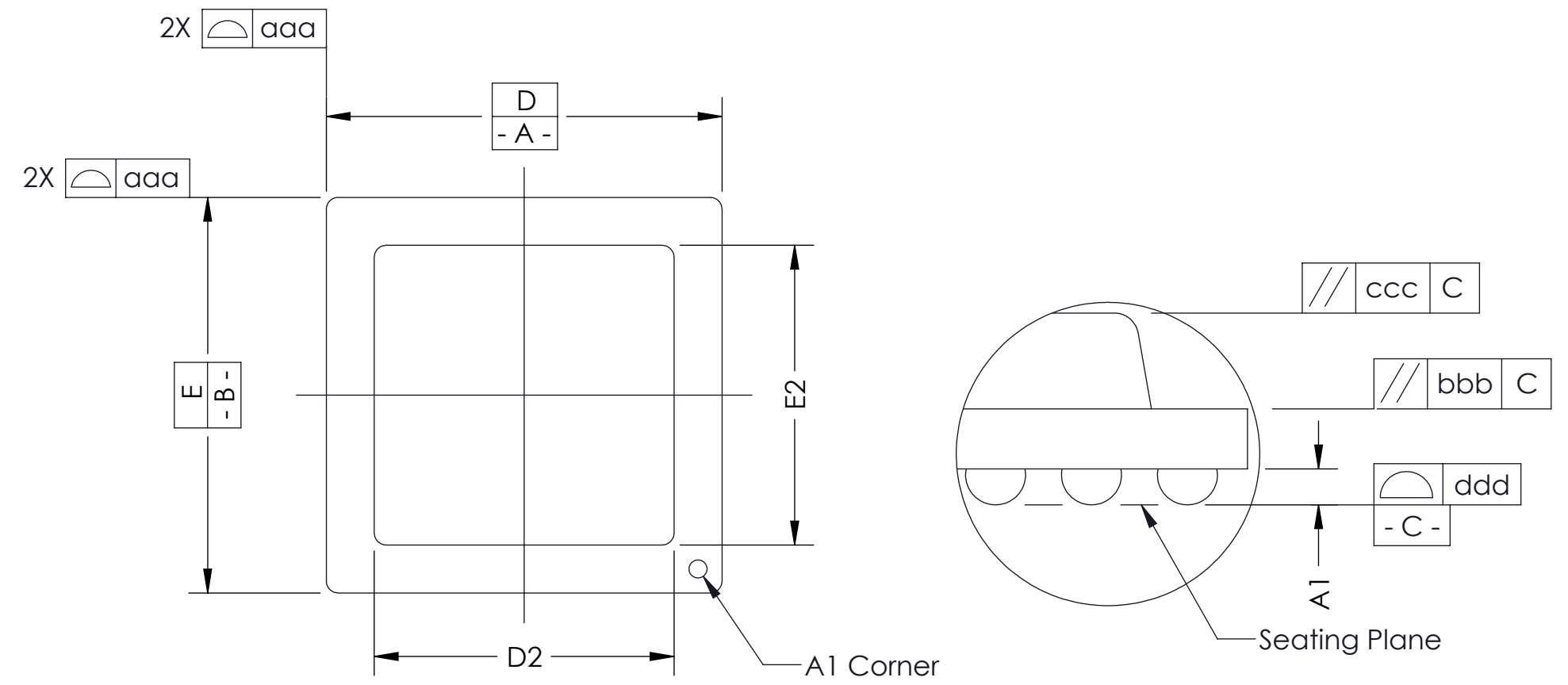
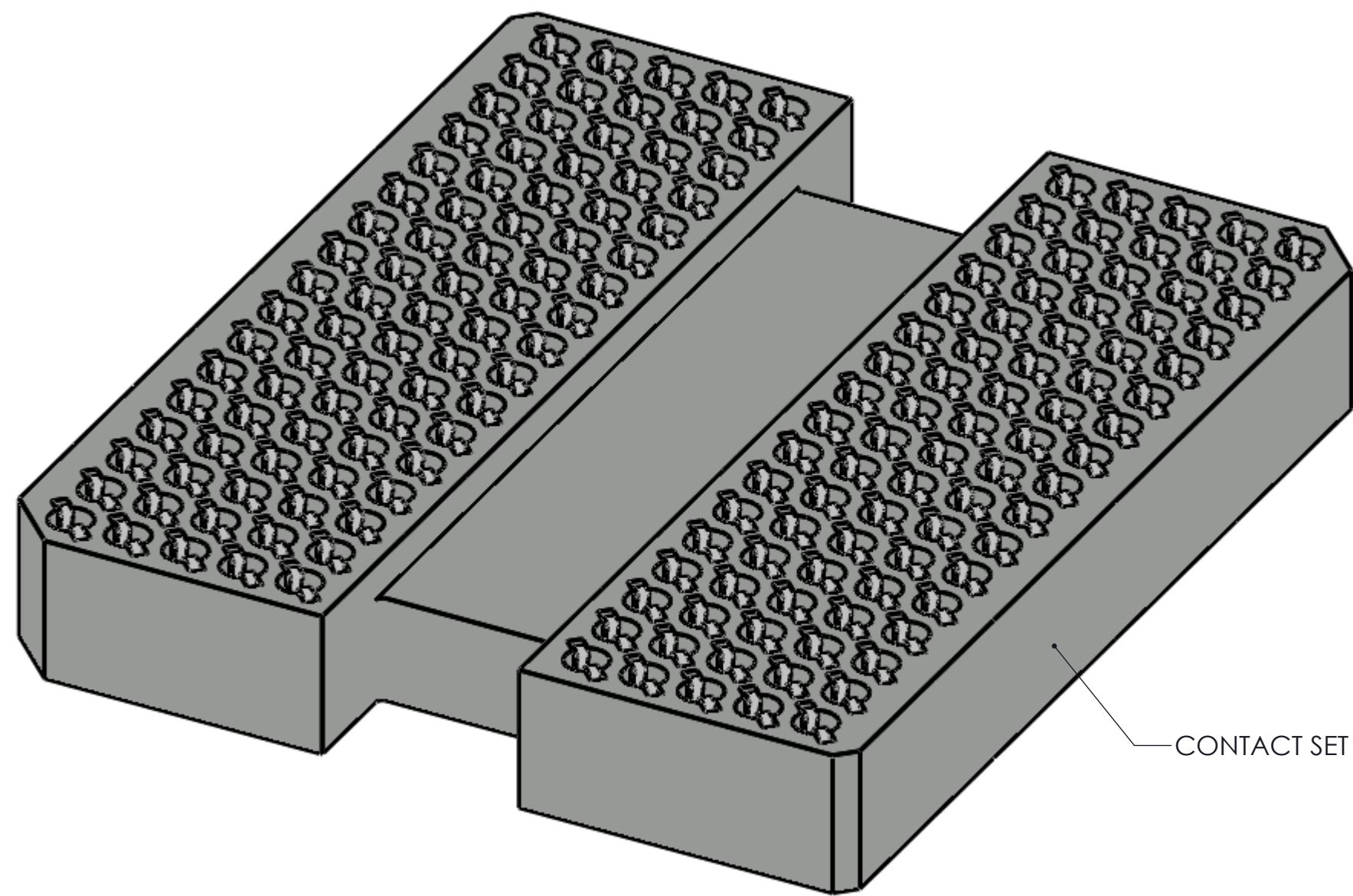
- NOTES:
- FOOTPRINT PART NUMBER IS 104311-0215
 - LOCATES CENTER OF CONTACT SLOTS.
 - PRESS SIZE: 12.0 X 14.0
 - DATUM B AND C DETERMINED BY $\phi 0.580$ OPENING IN CORNER SLOTS
 - ALL SOLDER BALLS ARE NOT SHOWN TO MINIMIZE FILE SIZE.

PARTS LIST	
Part Number	Description
105526-0103	SKCT, 170GRY12X14-0.80
105528-0070	CS, 170GRY12X14-0.80
103864-0111	PRESS, DEV INS, 12.0X14.0 (SOLD SEP.)

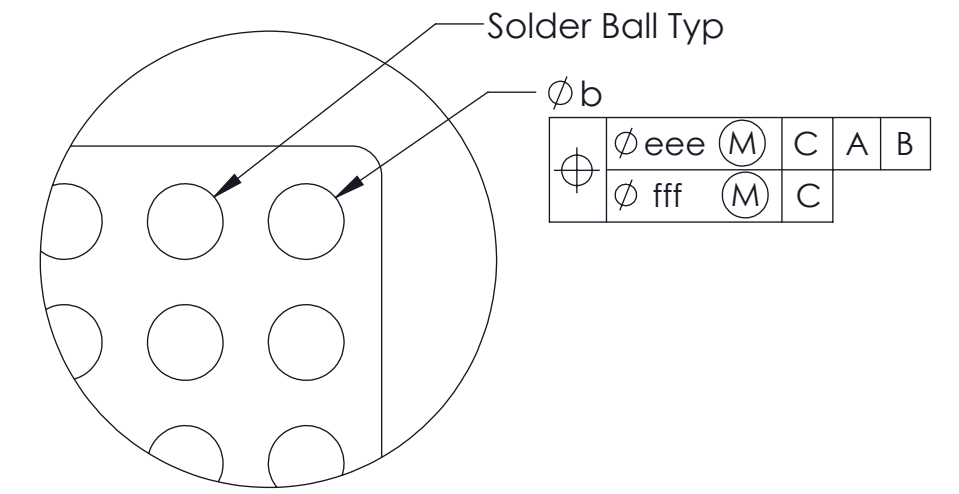
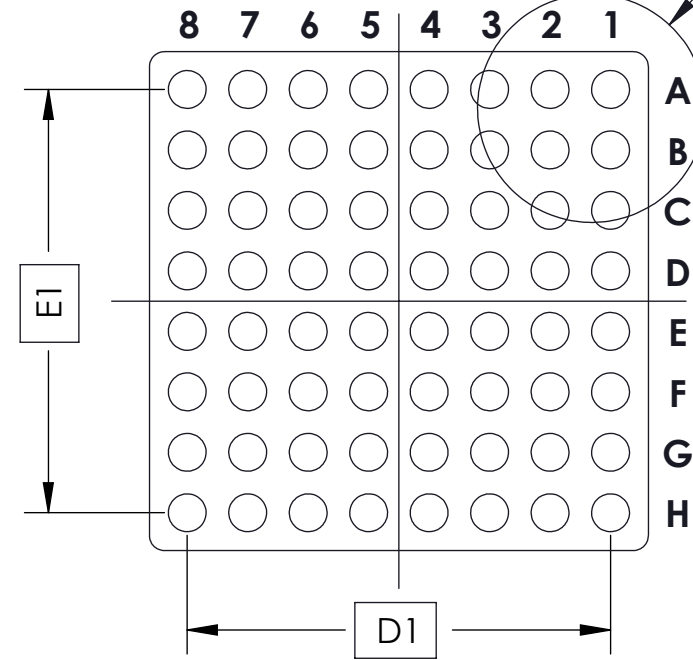
<p>HSIO technologies PROPRIETARY AND CONFIDENTIAL</p> <p>THE INFORMATION CONTAINED IN THIS DRAWING IS THE SOLE PROPERTY OF HSIO TECHNOLOGIES, LLC. ANY REPRODUCTION IN PART OR AS A WHOLE WITHOUT THE WRITTEN PERMISSION OF HSIO TECHNOLOGIES, LLC IS PROHIBITED.</p>	UNLESS OTHERWISE SPECIFIED: DIMENSIONS ARE IN MILLIMETERS TOLERANCES: ANGULAR: $\pm 1^\circ$ X.X ± 0.25 X.XX ± 0.10 X.XXX ± 0.050	<table border="1"> <tr> <th>NAME</th> <th>DATE</th> </tr> <tr> <td>PAR</td> <td>04/06/16</td> </tr> <tr> <td>NSJ</td> <td>04/06/16</td> </tr> </table>	NAME	DATE	PAR	04/06/16	NSJ	04/06/16	<p>HSIO TECHNOLOGIES, LLC. 13400 68th AVENUE NORTH MAPLE GROVE, MINNESOTA 55311 763-447-6260</p>
	NAME	DATE							
	PAR	04/06/16							
	NSJ	04/06/16							
INTERPRET GEOMETRIC TOLERANCING PER: MATERIAL: SEE BOM FINISH: DO NOT SCALE DRAWING	<p>LEGEND:</p> <ul style="list-style-type: none"> NOTE CALLOUT REVISION CHANGE ITEM NUMBER 	TITLE: SKCT, 170GRY12X14-0.80, DS (SAC305)							
		DWG. NO. 105526-0103	REV A						
		SCALE: 10:1	SIZE: C	SHEET 1 OF 2					

SOCKET FOR DEVICES THAT ARE WITHIN THESE SPECIFICATIONS					
Lead Count	N	170	Package Size	D	12.0
Columns	ND	14	Ball Spacing	E	14.0
Rows	NE	17	Encapsulant/ Top Size	D1	10.40
Pitch	e	0.80	Encapsulant/ Top Size	E1	12.80
Ball Size	b	0.45±0.05	Encapsulant/ Top Size	D2	N/A
Total Thickness	A	N/A	Pattern Style	E2	N/A
Ball Height	A1	0.275 Min	Perimeter Rows	Irregular*	
Substrate Thickness	A2	N/A	Center Array	N/A	
Top Thickness	A3	N/A			
Form Tolerances					
Edge	aaa	0.20	Bottom	ddd	0.15
Substrate	bbb	0.20	Position	eee	0.20
Top	ccc	0.20	Position	fff	0.08

ALL DIMENSIONS ARE IN MILLIMETERS.
*SEE FOOTPRINT SPECIFICATION FOR PATTERN DETAILS.



Detail B



Detail A

Generic Representation with Full Grid Array

PROPRIETARY AND CONFIDENTIAL

THE INFORMATION CONTAINED IN THIS DRAWING IS THE SOLE PROPERTY OF HSIO TECHNOLOGIES, LLC. ANY REPRODUCTION IN PART OR AS A WHOLE WITHOUT THE WRITTEN PERMISSION OF HSIO TECHNOLOGIES, LLC IS PROHIBITED.

UNLESS OTHERWISE SPECIFIED: DIMENSIONS ARE IN MILLIMETERS TOLERANCES: ANGULAR: ± 1° X.X ±0.25 X.XX ±0.10 X.XXX ±0.050	DRAWN	NAME	DATE	HSIO TECHNOLOGIES, LLC. 13400 68th AVENUE NORTH MAPLE GROVE, MINNESOTA 55311 763-447-6260
	CHECKED	NSJ	04/06/16	

LEGEND:
△ NOTE CALLOUT
◻ REVISION CHANGE
○ ITEM NUMBER

HSIO technologies

TITLE:
SCKT, 170GRY12X14-0.80, DS (SAC305)

DWG. NO. **105526-0103** REV **A**

SCALE: 10:1 SIZE: C SHEET 2 OF 2