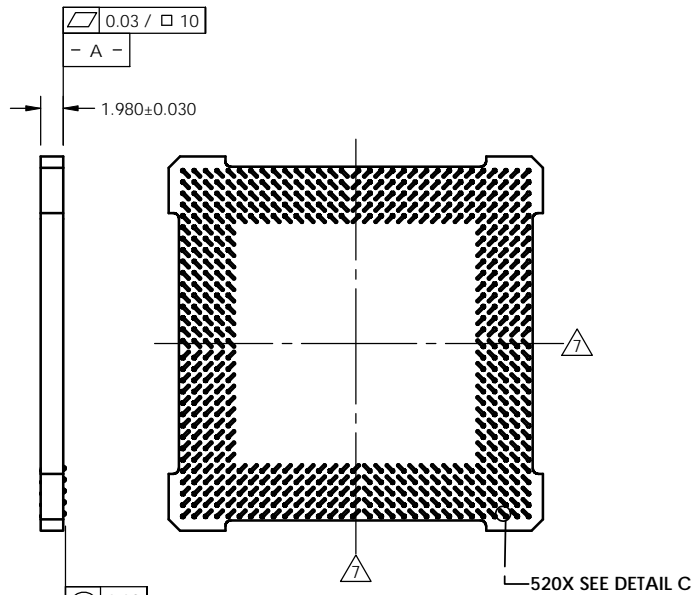
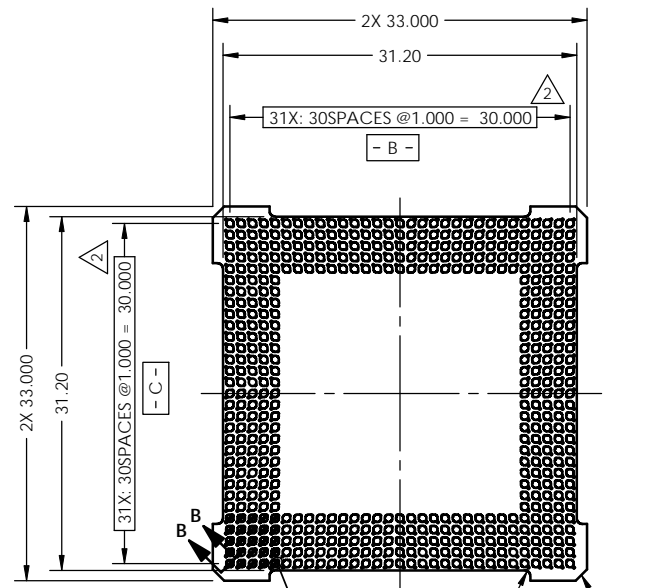
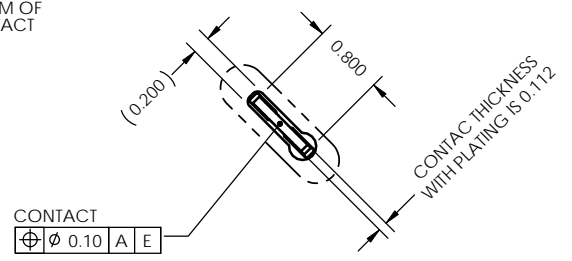
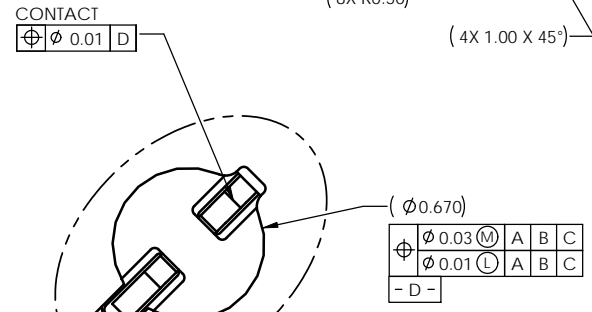


REV	ECO	BY	DESCRIPTION	APV	DATE
A	30436	KP	Initial Design	ET	06/22/10

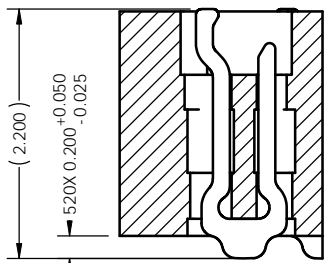


- Notes:
- Footprint part number is 104311-0237.
 - Dimension locates center of slot/contact.
 - Unless otherwise noted, all features located $\phi 0.10$ A B C
 - Reference Cascade Microtech specification 103862-0004.
 - Press size is 33.0 x 33.0.
 - Datum -B- and -C- are determined by $\phi 0.670$ opening in corner slots.
 - E- center of contact pattern.



DETAIL C (520X)
Scale 8:1

PARTS LIST		
PART NUMBER	QTY	DESCRIPTION
106652-0014	-	SCKT, 520G80 33-1.00
106651-0014	1	CS, 520G80 33-1.00
103864-0014	1	PRESS, DEV, 33 X 33 (SOLD SEPARATELY)
104553-0182	1	STENCIL, 520G80 33-1.00 (SOLD SEPARATELY)



SECTION B-B
Scale 10:1

DETAIL A (520X)
Scale 20:1

UNLESS OTHERWISE SPECIFIED DIMENSIONS ARE IN MILLIMETERS DIMS APPLY AFTER PLATING TOLERANCES UNLESS OTHERWISE NOTED:

ANGLES ±1°	DECIMALS XX ±0.25 XXX ±0.10 XXXX ±0.050
------------	--

THE INFORMATION CONTAINED IN THIS DRAWING IS THE SOLE PROPERTY OF CASCADE MICROTECH, INC. ANY REPRODUCTION IN PART OR WHOLE WITHOUT THE WRITTEN PERMISSION OF CASCADE MICROTECH, INC. IS PROHIBITED.

CAD GENERATED DRAWING DO NOT MANUALLY UPDATE

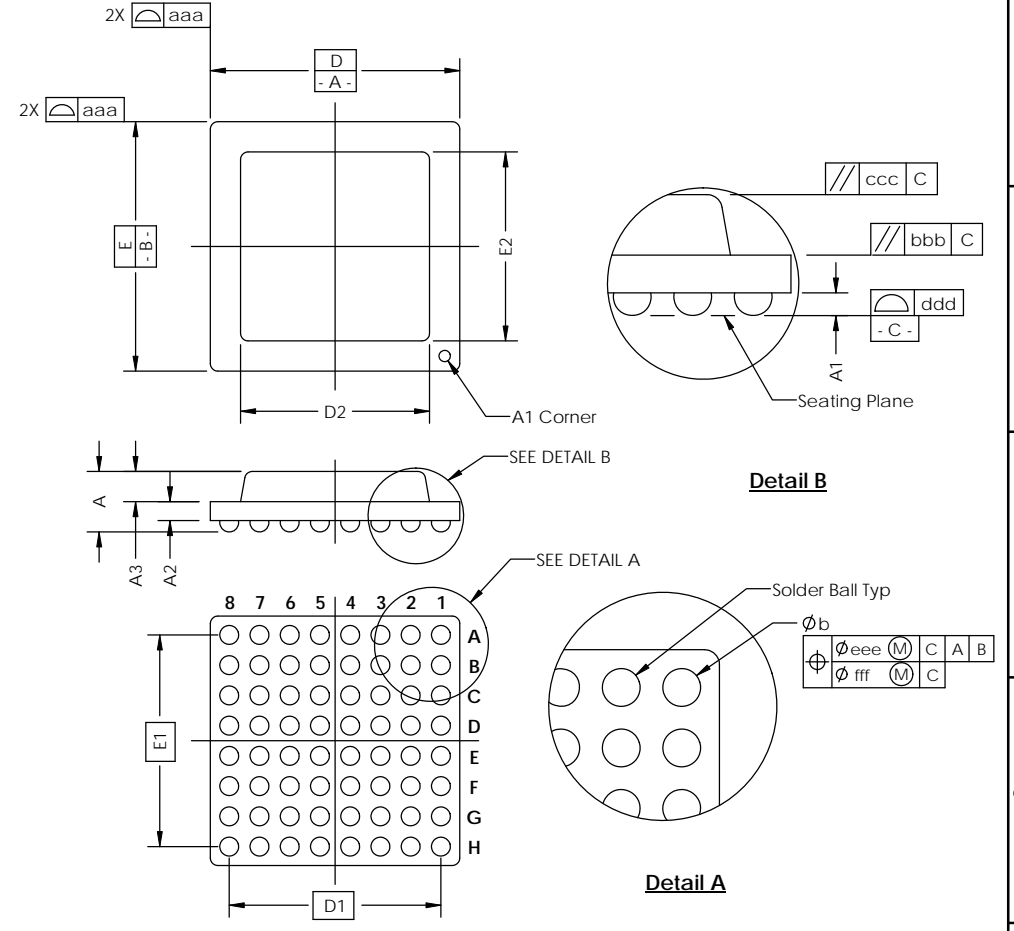
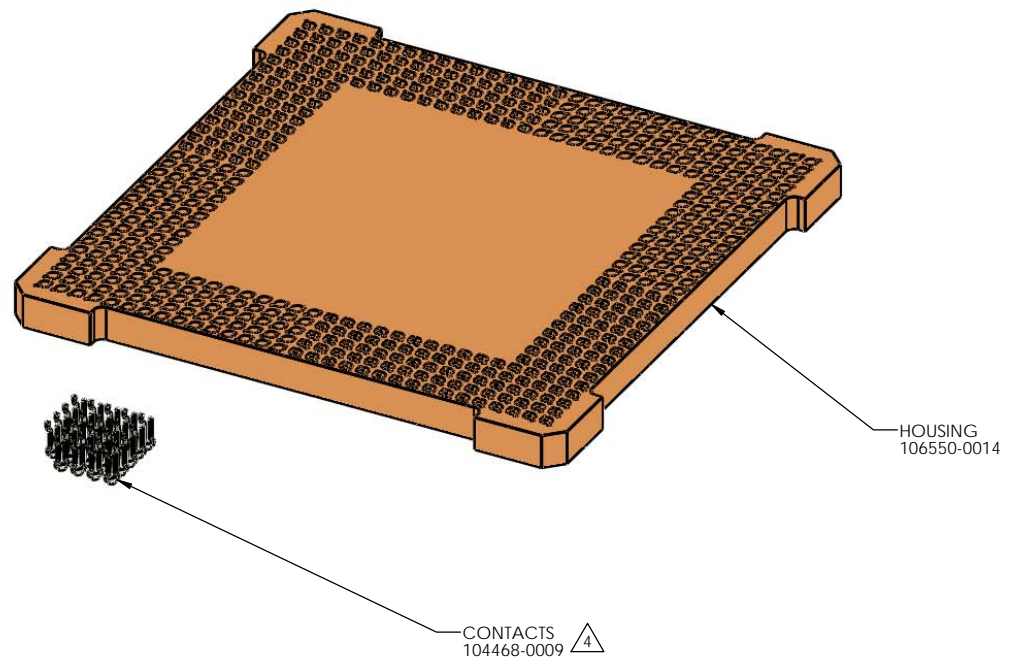
7115 NORTHLAND TERRACE SUITE 400
BROOKLYN PARK, MN 55428
(763) 509-0066

SCKT, 520G80 33-1.00

DRAWING APPROVALS		SCALE	QUANTITY	DESCRIPTION	REV
NAME	DATE	C	SOLIDWORKS	106652-0014	A
DESIGN: K. Pitney	06/22/10				
APPV: E. Turin	06/22/10				
THIRD ANGLE PROJECTION					
LEGEND:					
(A) NOTE CALLOUT					
(B) REVISION CHANGE					
(C) ITEM NUMBER					
SEE BOM					1 of 2

SOCKET FOR DEVICES THAT ARE WITHIN THESE SPECIFICATIONS					
Lead Count	N	520	Package Size	D	33.00
Columns	ND	31	Ball Spacing	E	33.00
Rows	NE	31		D1	30.000
Pitch	e	1.00	Encapsulant/ Top Size	E1	30.000
Ball Size	b	0.60±0.05		D2	N/A
Total Thickness	A	N/A	Pattern Style	E2	N/A
Ball Height	A1	0.375 MIN		Irregular*	
Substrate Thickness	A2	N/A	Perimeter Rows		N/A
Top Thickness	A3		Center Array		N/A
Form Tolerances					
Edge	aaa	0.20	Bottom	ddd	0.15
Substrate	bbb	0.20	Position	eee	0.20
top	ccc	0.20	Position	fff	0.08

All dimensions are in millimeters.
* See footprint for pattern details.



Generic Representation with Full Grid Array

THE INFORMATION CONTAINED IN THIS DRAWING IS THE SOLE PROPERTY OF CASCADE MICROTECH, INC.
ANY REPRODUCTION IN PART OR WHOLE WITHOUT THE WRITTEN PERMISSION OF CASCADE MICROTECH, INC. IS PROHIBITED.

UNLESS OTHERWISE SPECIFIED
- DIMENSIONS ARE IN MILLIMETERS
- DIMES APPLY AFTER PLATING
TOLERANCES UNLESS OTHERWISE NOTED: DECIMALS
ANGLES X.X ±0.25
X.XX ±0.10
X.XXX ±0.050

LEGEND:
 NOTE CALLOUT
 REVISION CHANGE
 ITEM NUMBER

CASCADE MICROTECH, INC.
7115 NORTHLAND TERRACE SUITE 400
BROOKLYN PARK, MN 55428
(763) 509-0066

SKCT, 520G80 33-1.00

REV	DATE	BY	APP'D
C			

SCALE: SOLIDWORKS
MATERIAL: 106652-0014
PAGE: See Page 1
SHEET: 2 of 2