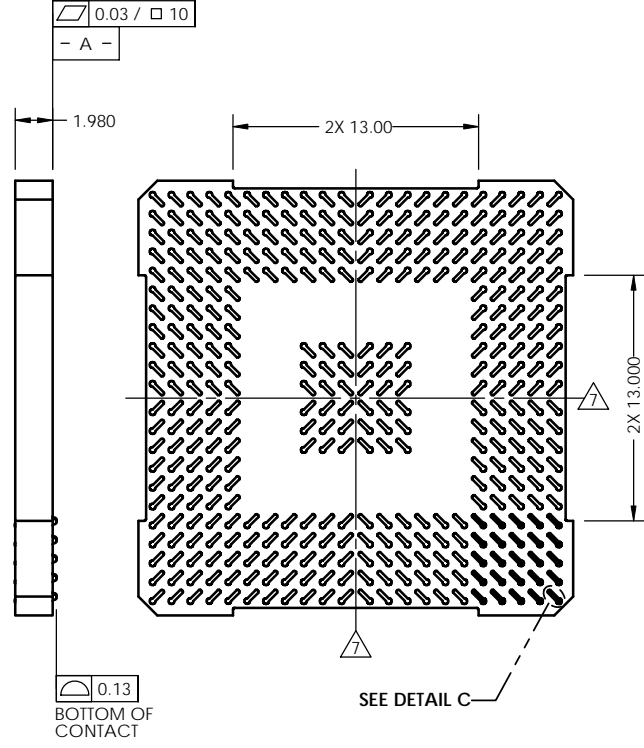
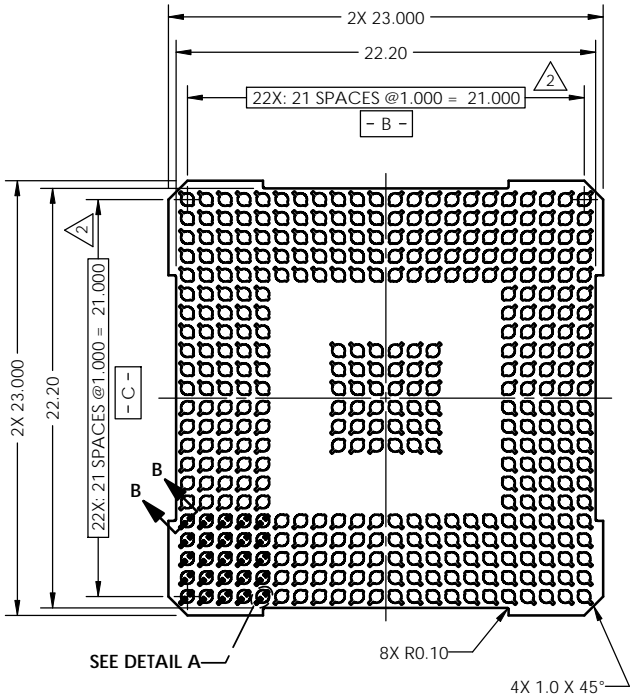
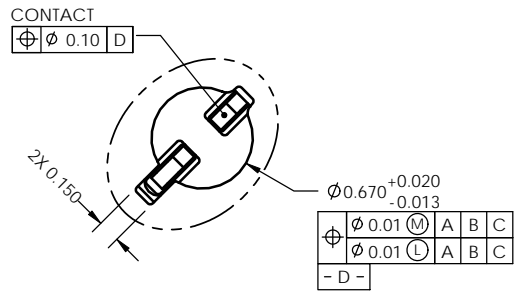


REV	ECO	BY	DESCRIPTION	APV	DATE
A	30577	MP	Initial Design	MP	10/01/10

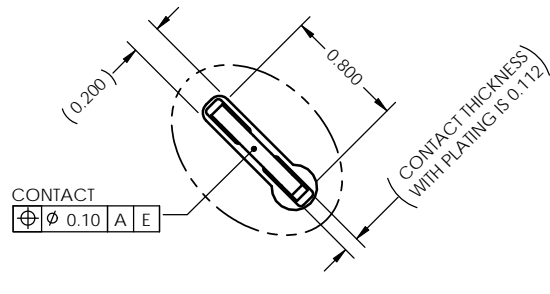


- Notes:
- Footprint part number is 104311-0253.
  - Dimension locates center of slot/contact.
  - Unless otherwise noted, all features located  $\phi 0.10$  A B C
  - Reference Cascade Microtech specification 103862-0001.
  - Press size is 23.0 x 23.0.
  - Datum -B- and -C- are determined by  $\phi 0.670$  opening in corner slots.
  - E- center of contact pattern.
  - Reference Cascade Microtech specification 103863-0001 for application notes.

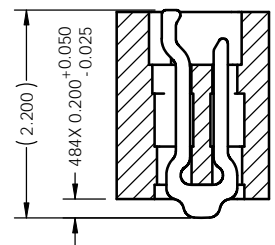
PARTS LIST		
PART NUMBER	QTY	DESCRIPTION
106652-0017	-	SCKT, 376G8023-1.00
106651-0017	1	CS, 376G8023-1.00
103864-0122	1	PRESS, DEV, 23.0 (SOLD SEPARATELY)
107030-0040	1	STENCIL, 376G8023-1.00 (SOLD SEPARATELY)



**DETAIL A (376X)**  
SCALE 8:1



**DETAIL C (376X)**  
SCALE 8:1



**SECTION B-B**  
SCALE 5:1

UNLESS OTHERWISE SPECIFIED  
DIMENSIONS ARE IN MILLIMETERS  
DIM'S APPLY AFTER PLATING  
TOLERANCES UNLESS OTHERWISE NOTED:

ANGLES	DECIMALS
±1°	XX ±0.25
	XXX ±0.10
	XXXX ±0.50

LEGEND:

- NOTE CALLOUT
- REVISION CHANGE
- ITEM NUMBER

THE INFORMATION CONTAINED IN THIS DRAWING IS THE SOLE PROPERTY OF CASCADE MICROTECH, INC. ANY REPRODUCTION IN PART OR WHOLE WITHOUT THE WRITTEN PERMISSION OF CASCADE MICROTECH, INC. IS PROHIBITED.

CAD GENERATED DRAWING  
DO NOT MANUALLY UPDATE

7115 NORTHLAND TERRACE SUITE 400  
BROOKLYN PARK, MN 55428  
(763) 509-0066

**SCKT, 376G8023-1.00**

DRAWING APPROVALS

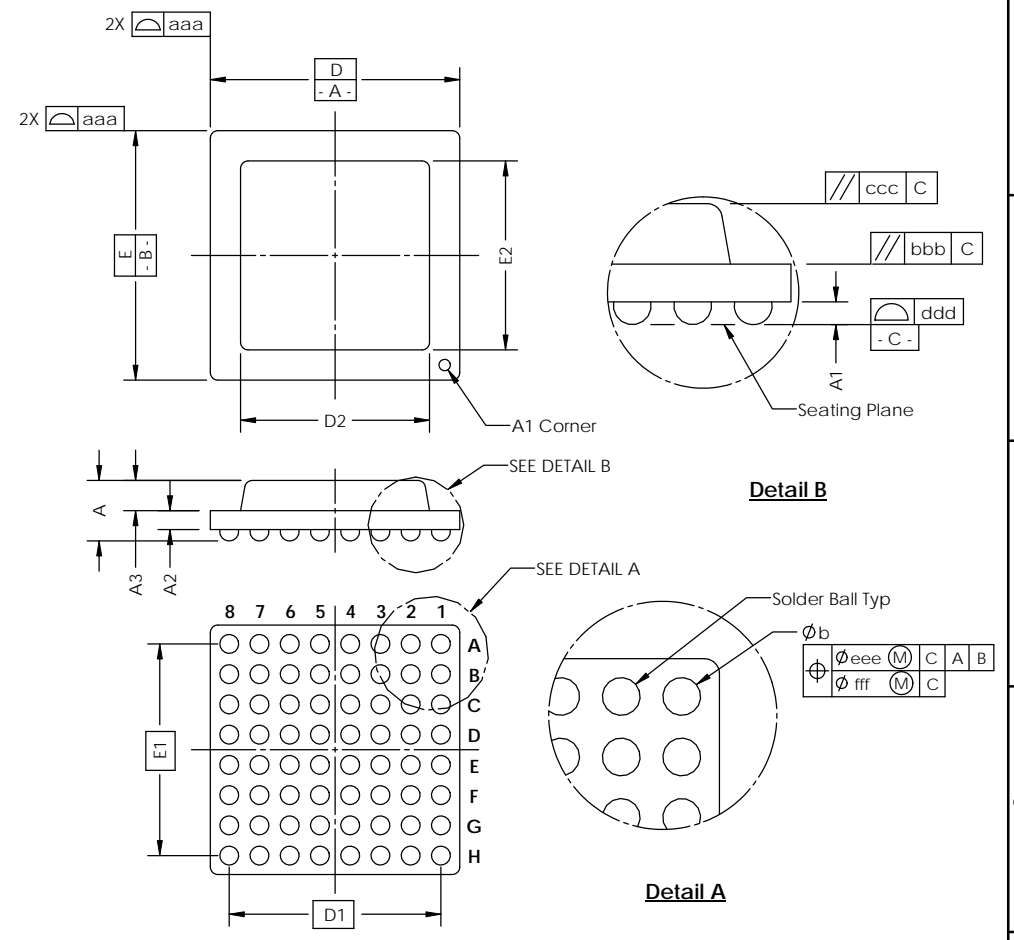
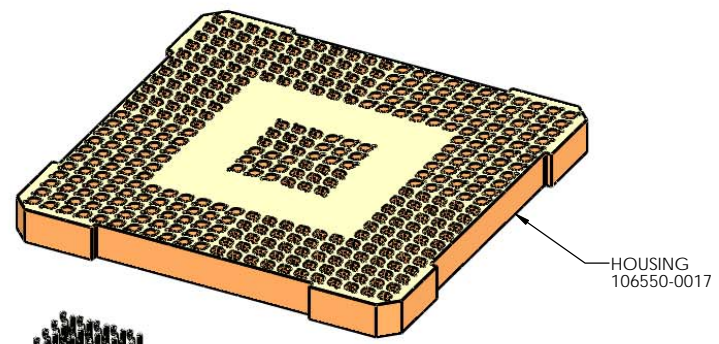
DESIGN	DATE
M. Peery	10/01/10
APP'D	DATE
M. Peery	10/01/10

THIRD ANGLE PROJECTION

SCALE	NATURAL	DESCRIPTION	REV
C	SOLIDWORKS	106652-0017	A
SEE BOM		SHEET 1 of 2	

SOCKET FOR DEVICES THAT ARE WITHIN THESE SPECIFICATIONS					
Lead Count	<b>N</b>	376	Package Size	<b>D</b>	23.00
Columns	<b>ND</b>	22		<b>E</b>	23.00
Rows	<b>NE</b>	22	Ball Spacing	<b>D1</b>	21.000
Pitch	<b>e</b>	1.00		<b>E1</b>	21.000
Ball Size	<b>b</b>	0.60±0.05	Encapsulant/ Top Size	<b>D2</b>	19.65
Total Thickness	<b>A</b>	N/A		<b>E2</b>	19.65
Ball Height	<b>A1</b>	0.375 MIN	Pattern Style	Irregular*	
Substrate Thickness	<b>A2</b>	N/A	Perimeter Rows	5	
Top Thickness	<b>A3</b>		Center Array	6	
Form Tolerances					
Edge	<b>aaa</b>	0.20	Bottom	<b>ddd</b>	0.15
Substrate	<b>bbb</b>	0.20	Position	<b>eee</b>	0.20
top	<b>ccc</b>	0.20	Position	<b>fff</b>	0.08

All dimensions are in millimeters.  
\* See footprint for pattern details.



**Generic Representation with Full Grid Array**

<small>THE INFORMATION CONTAINED IN THIS DRAWING IS THE SOLE PROPERTY OF CASCADE MICROTECH, INC. ANY REPRODUCTION IN PART OR WHOLE WITHOUT THE WRITTEN PERMISSION OF CASCADE MICROTECH, INC. IS PROHIBITED.</small>			
<small>UNLESS OTHERWISE SPECIFIED - DIMENSIONS ARE IN MILLIMETERS - DIMS APPLY AFTER PLATING - TOLERANCES UNLESS OTHERWISE NOTED: DECIMALS: X.X ±0.25 X.XX ±0.10 X.XXX ±0.050</small>		<b>7115 NORTHLAND TERRACE SUITE 400 BROOKLYN PARK, MN 55428 (763) 509-0066</b>	
<h2>SCKT, 376G8023-1.00</h2>			
<b>LEGEND:</b> NOTE CALLOUT REVISION CHANGE ITEM NUMBER	<small>DATE FORNAT</small> <b>C</b> SOLIDWORKS	<small>DRAWING NO.</small> <b>106652-0017</b>	<small>REV.</small> <b>A</b>
<small>SCALE</small> See Page 1		<small>SHEET</small> 2 of 2	