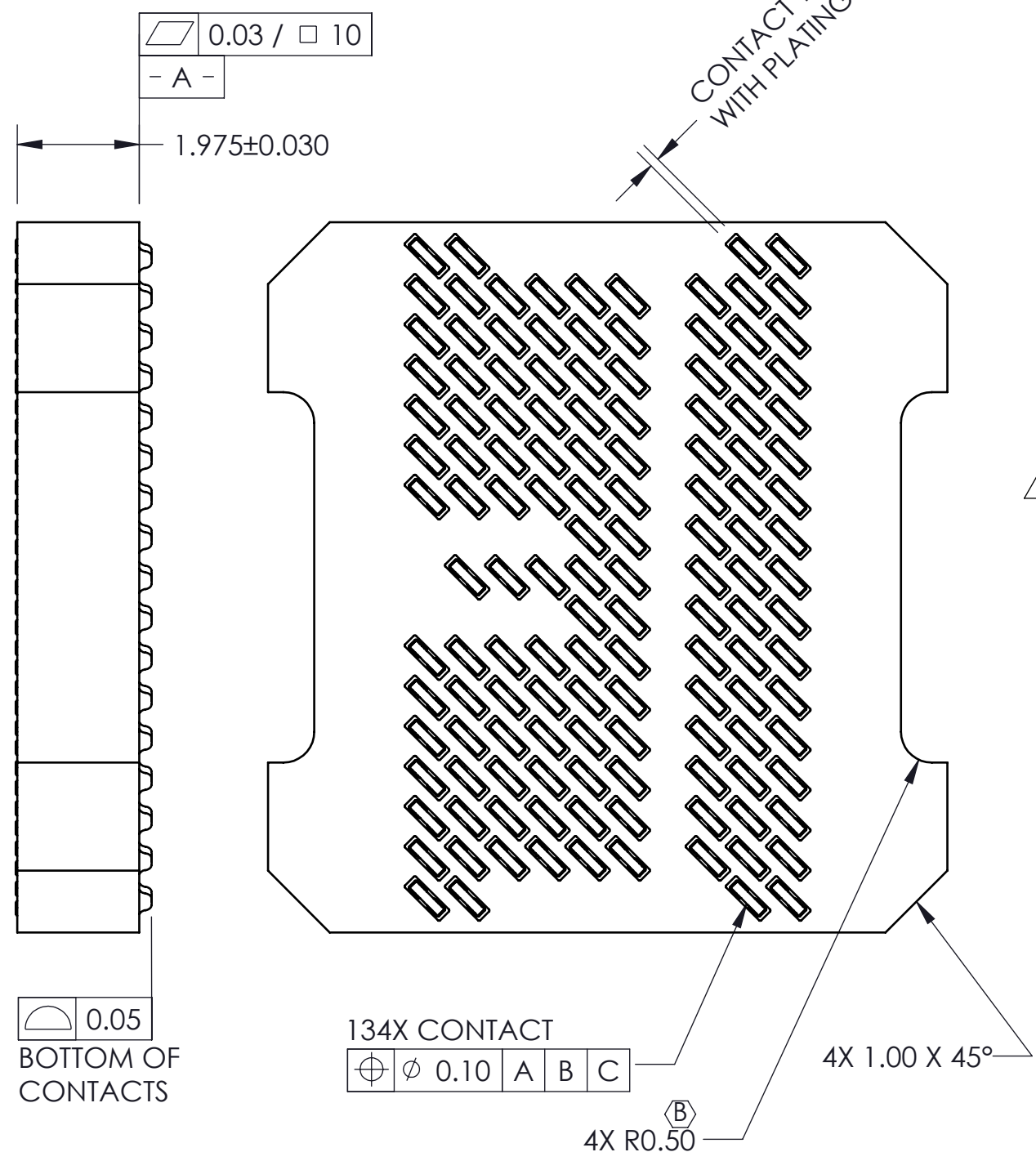
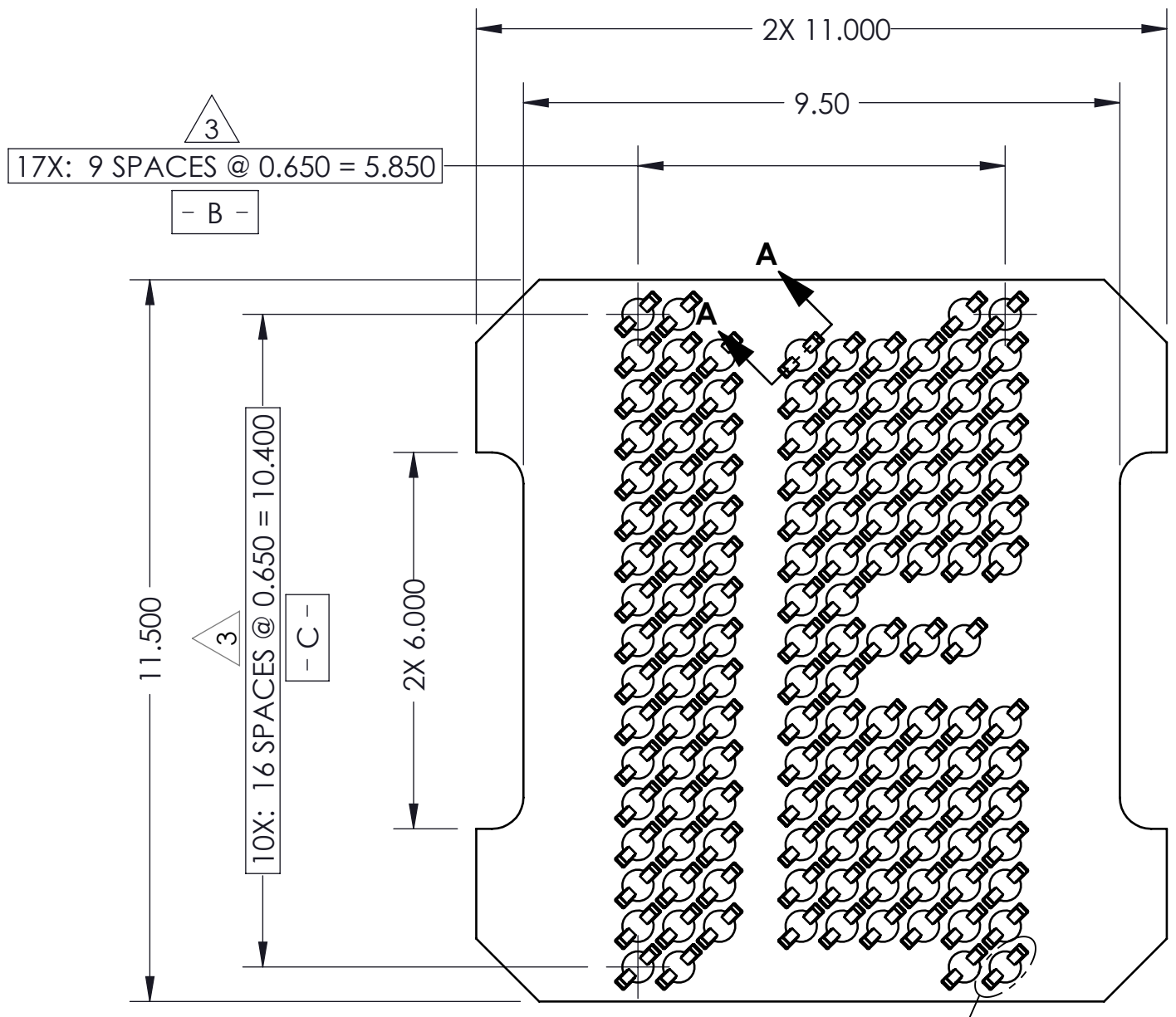
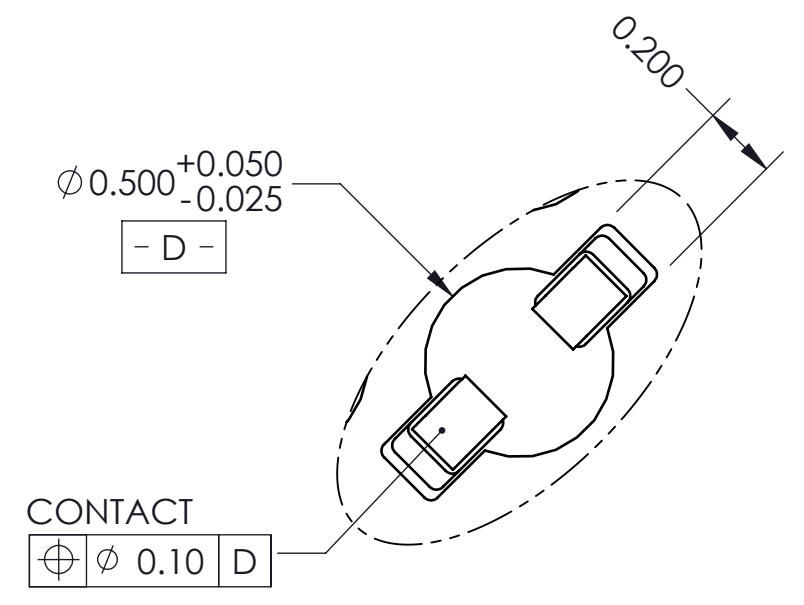
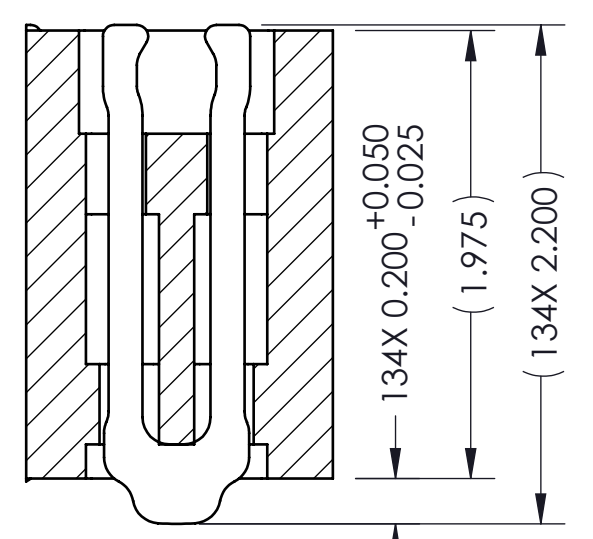


REV	ECO	BY	DESCRIPTION	APV	DATE
A	31259	AS	INITIAL DESIGN	MP	02/21/13
B	32015	RS	WAS R0.40	NSJ	11/12/18



- Notes:
- Footprint part number is 104311-0258.
 - Unless otherwise noted, all features located $\oplus 0.10$ A B C
 - \triangle Locates center of contact slots.
 - Datums B and C determined by $\phi 0.500$ opening in corner slots.

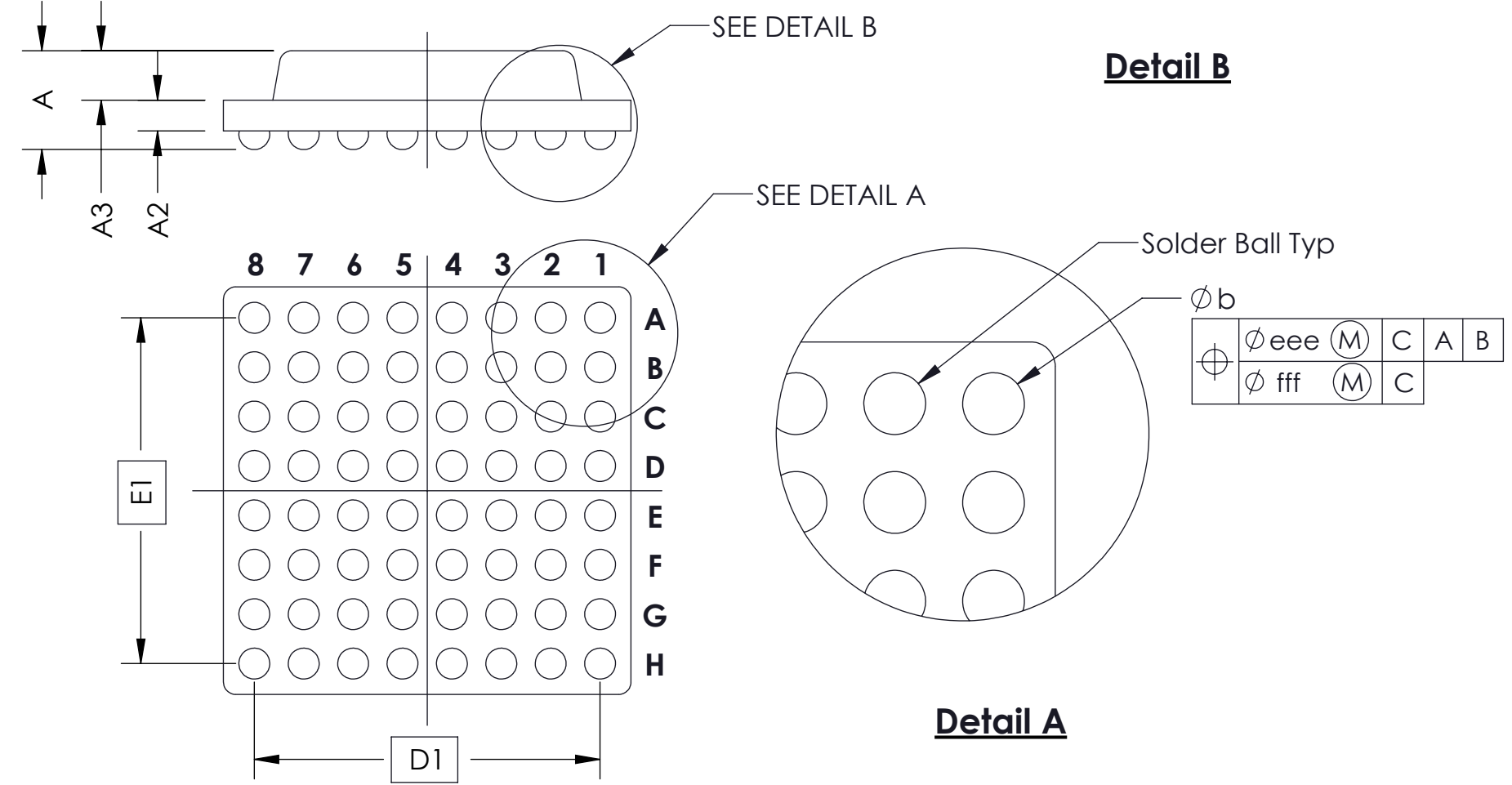
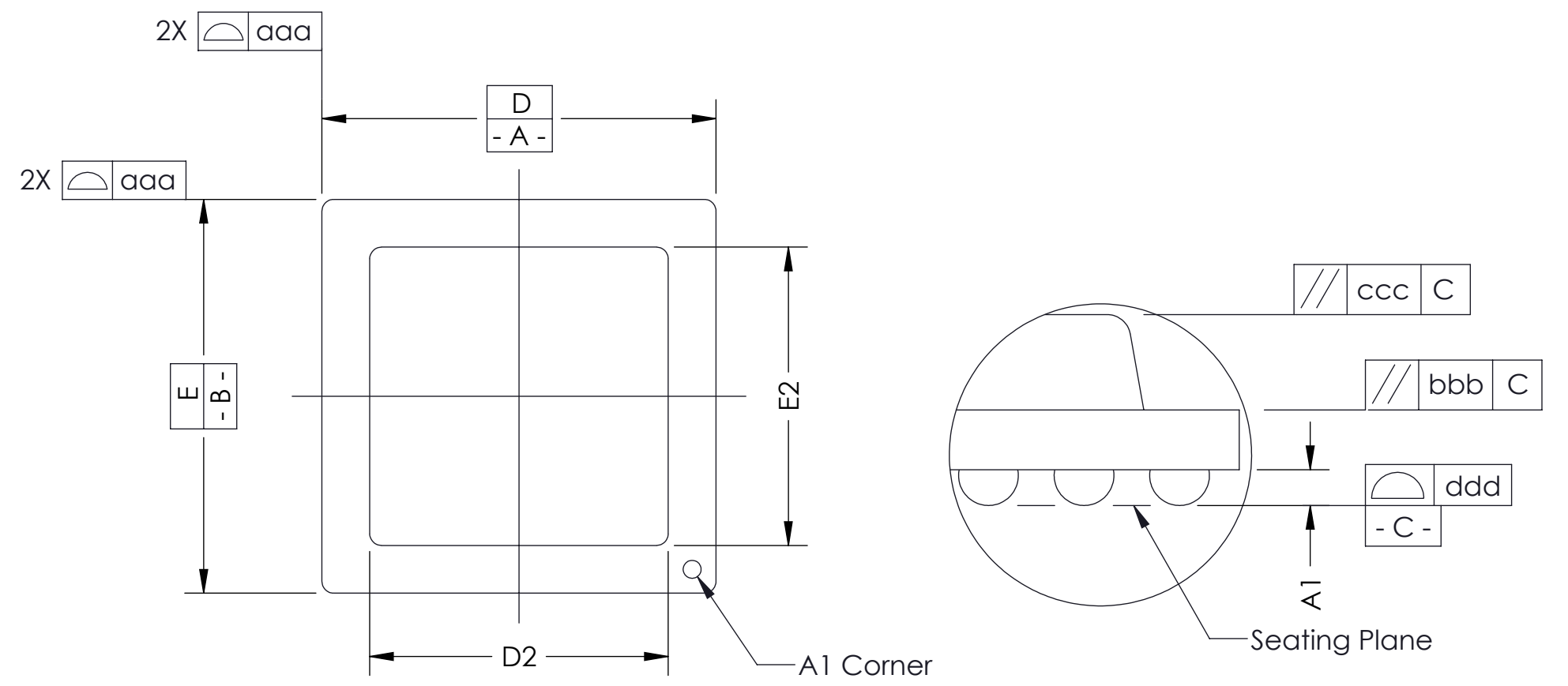
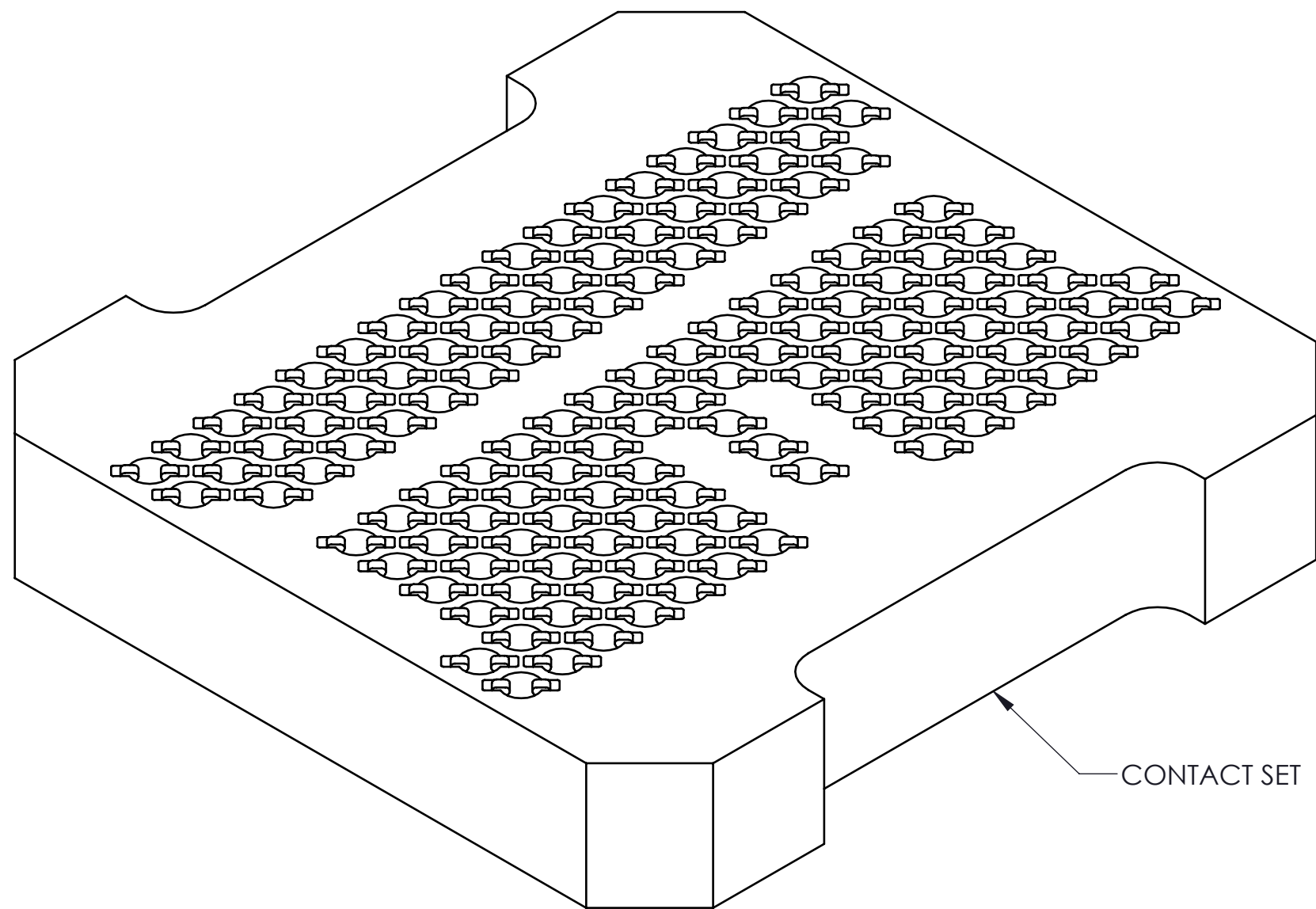
PARTS LIST	
Part Number	Description
106918-0012	SCKT, 134GRY11X11.5-0.65
106919-0012	CS, 134GRY11X11.5-0.65
103864-0061	PRESS, DEV INS, 11X11.5 (SOLD SEP.)
104553-0196	STEN,FLEX, 134GRY11X11.5-0.65 (SOLD SEP.)
105900-0004	EXTRACTION TOOL, 4X53 (SOLD SEP.)



<p>HSIO technologies PROPRIETARY AND CONFIDENTIAL</p> <p>THE INFORMATION CONTAINED IN THIS DRAWING IS THE SOLE PROPERTY OF HSIO TECHNOLOGIES, LLC. ANY REPRODUCTION IN PART OR AS A WHOLE WITHOUT THE WRITTEN PERMISSION OF HSIO TECHNOLOGIES, LLC IS PROHIBITED.</p>	UNLESS OTHERWISE SPECIFIED:	NAME	DATE	HSIO TECHNOLOGIES, LLC. 13400 68th AVENUE NORTH MAPLE GROVE, MINNESOTA 55311 763-447-6260 TITLE: SCKT, 134GRY11X11.5-0.65 DWG. NO. 106918-0012 REV B SCALE: 10:1 SIZE: C SHEET 1 OF 2	
	DIMENSIONS ARE IN MILLIMETERS	DRAWN	AS		02/21/13
	TOLERANCES: ANGULAR: $\pm 1^\circ$ XX ± 0.25 X.XX ± 0.10 X.XXX ± 0.050	CHECKED	MP		02/21/13
	INTERPRET GEOMETRIC TOLERANCING PER:	LEGEND:			
MATERIAL SEE BOM	\triangle NOTE CALLOUT \square REVISION CHANGE \circ ITEM NUMBER				
FINISH	DO NOT SCALE DRAWING				

SOCKET FOR DEVICES THAT ARE WITHIN THESE SPECIFICATIONS					
Lead Count	N	134	Package Size	D	11.00
Columns	ND	10		E	11.50
Rows	NE	17	Ball Spacing	D1	5.85
Pitch	e	0.65		E1	10.40
Ball Size	b	0.40±0.05	Encapsulant/ Top Size	D2	n/a
Total Thickness	A	n/a		E2	n/a
Ball Height	A1	0.25 Min	Pattern Style	IRREGULAR*	
Substrate Thickness	A2	n/a	Perimeter Rows	n/a	
Top Thickness	A3	n/a	Center Array	n/a	
Form Tolerances					
Edge	aaa	0.20	Bottom	ddd	0.15
Substrate	bbb	0.20	Position	eee	0.20
Top	ccc	0.20	Position	fff	0.08

All dimensions are in millimeters.
*See footprint specification for pattern details.



Generic Representation with Full Grid Array

PROPRIETARY AND CONFIDENTIAL					
THE INFORMATION CONTAINED IN THIS DRAWING IS THE SOLE PROPERTY OF HSIO TECHNOLOGIES, LLC. ANY REPRODUCTION IN PART OR AS A WHOLE WITHOUT THE WRITTEN PERMISSION OF HSIO TECHNOLOGIES, LLC IS PROHIBITED.					
UNLESS OTHERWISE SPECIFIED:	NAME	DATE	HSIO TECHNOLOGIES, LLC. 13400 68th AVENUE NORTH MAPLE GROVE, MINNESOTA 55311 763-447-6260		
DIMENSIONS ARE IN MILLIMETERS	DRAWN	AS			02/21/13
TOLERANCES:	CHECKED	MP			02/21/13
ANGULAR: ± 1° X.X ±0.25 X.XX ±0.10 X.XXX ±0.050			TITLE: SCKT, 134GRY11X11.5-0.65		
LEGEND: △ NOTE CALLOUT ◻ REVISION CHANGE ○ ITEM NUMBER	DWG. NO. 106918-0012		REV B		
SCALE: 10:1		SIZE: C	SHEET 2 OF 2		