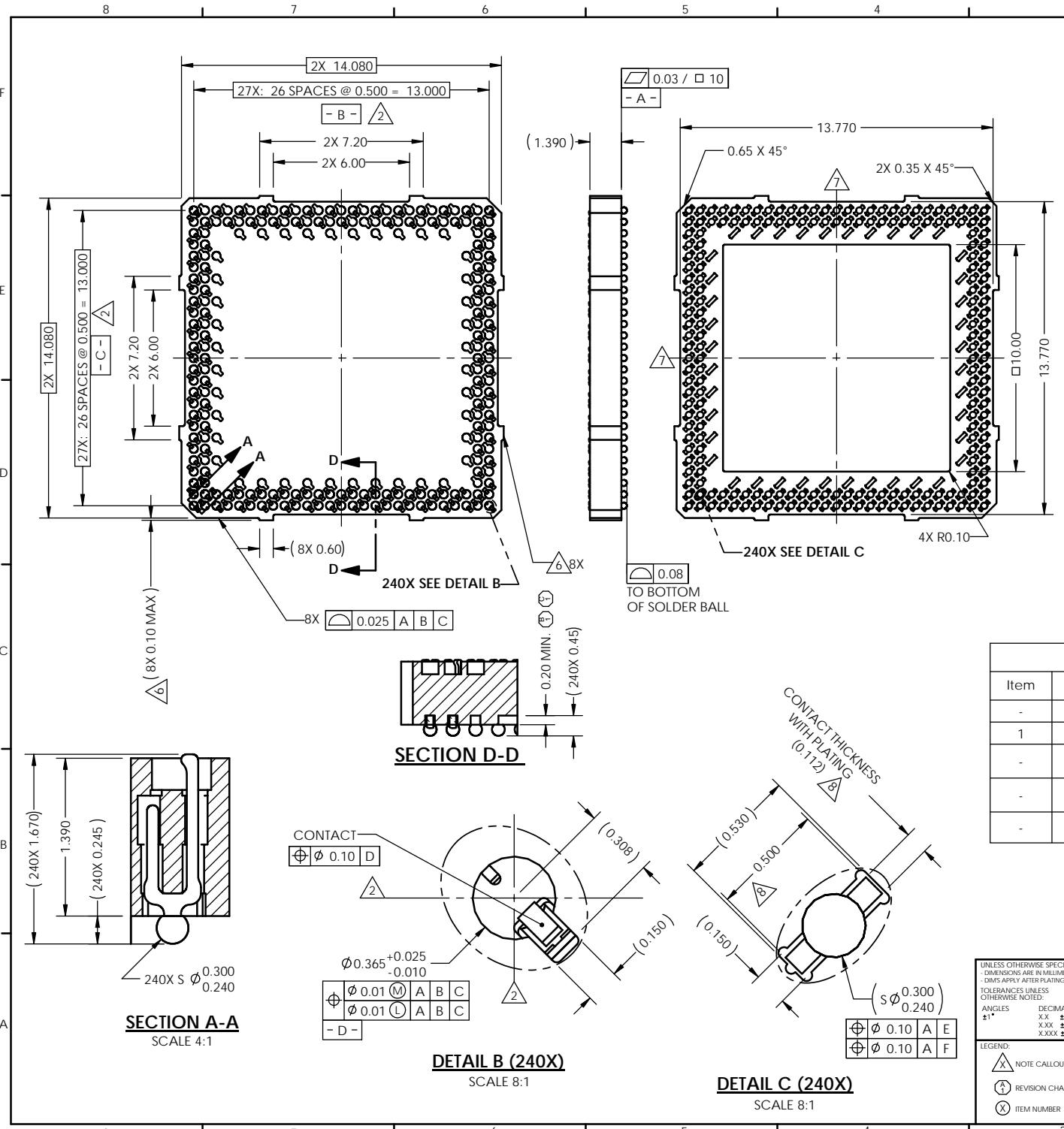


REV	ECO	BY	DESCRIPTION	APV	DATE
A	30364	EJT	Initial Design	MP	05/21/10
B	30437	CW	Was 0.63	EJT	06/28/10
C	30649	MP	Added "MIN" to pocket depth	MP	12/09/10
D	31156	WB	Updated to current standard	KW	08/07/12



Notes:

- Reference R&D Interconnect Solutions specification 103862-0004 for solder attachment.
- Dimension locates center of contact/ slot.
- Reference R&D Interconnect Solutions specification 103863-0001 for application notes.
- Footprint part number is 104311-0224.
- Datums B and C are determined by $\phi 0.365$ features on corner slots.
- Tooling marks permitted. Maximum 0.10 protrusion (shown).
- E - Center of Ball Pattern.
- F - Center of Contact.
- Unless otherwise noted, all features located $\phi 0.10$ A B C
- Press size 14.00X14.00.

PARTS LIST			
Item	Qty	Part Number	Description
-	-	107022-0031	SCKT, 240G40 14-0.50
1	1	107249-0013	CS, 240G40 14-0.50
-	-	103864-0004	PRESS, DEVICE INSERT, GRYP 14X14 (SOLD SEPARATELY)
-	-	105900-0004	EXTRACTION TOOL, 4 X 53 (SOLD SEPARATELY)
-	-	107030-0031	STEN FLEX 240G40 14-0.50 (SOLD SEPARATELY)

UNLESS OTHERWISE SPECIFIED DIMENSIONS ARE IN MILLIMETERS DIMS APPLY AFTER PLATING TOLERANCES UNLESS OTHERWISE NOTED:

DECIMALS: XX ±0.25
XXX ±0.10
XXXX ±0.050

ANGLES: ±1°

THE INFORMATION CONTAINED IN THIS DRAWING IS THE SOLE PROPERTY OF R&D INTERCONNECT SOLUTIONS. ANY REPRODUCTION IN PART OR WHOLE WITHOUT THE WRITTEN PERMISSION OF R&D INTERCONNECT SOLUTIONS IS PROHIBITED.

CAD GENERATED DRAWING DO NOT MANUALLY UPDATE

7115 NORTHLAND TERRACE SUITE 400 BROOKLYN PARK, MN 55428 (763) 509-0066

DRAWING APPROVALS

NAME	DATE
E.Turin	05/19/10
NAME	DATE
M. Peery	05/21/10

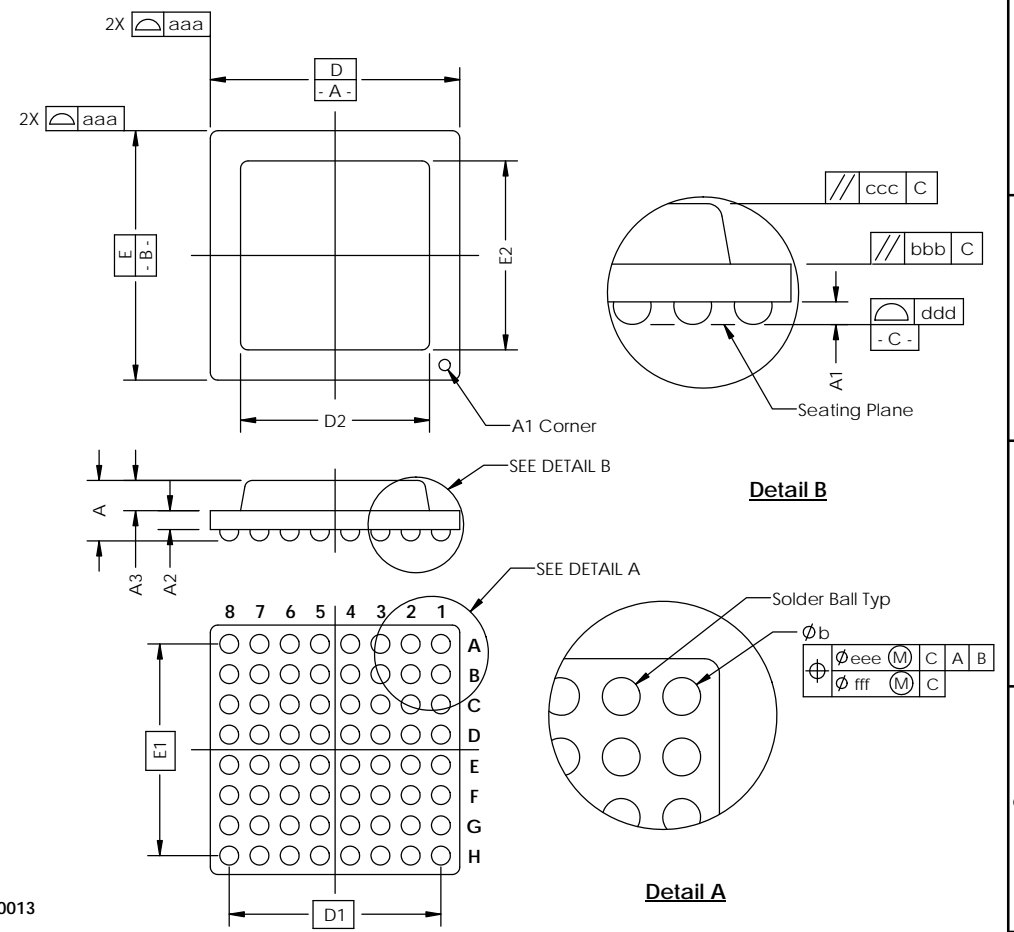
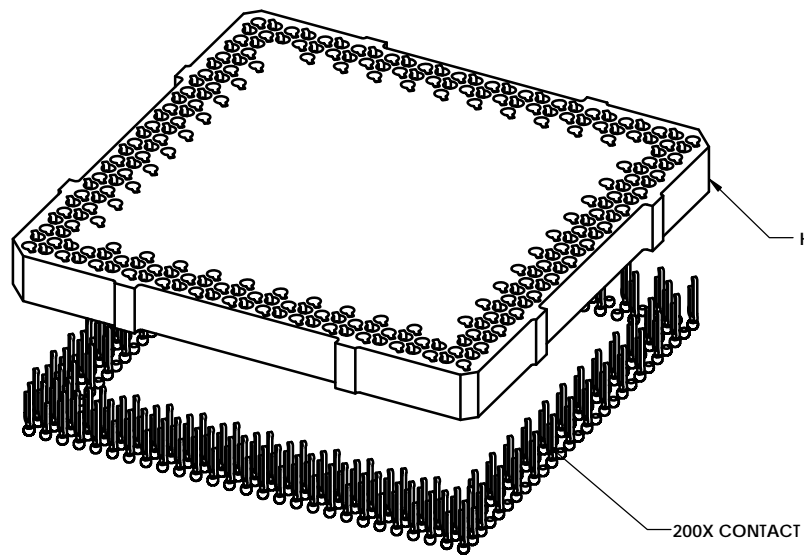
THIRD ANGLE PROJECTION

SCALE: C (CUSTOMER) SOLIDWORKS (DRAWING) 107022-0031 D (SHEET) 1 of 2

SEE BOM

SOCKET FOR DEVICES THAT ARE WITHIN THESE SPECIFICATIONS					
Lead Count	N	240	Package Size	D	14.00
Columns	ND	27		E	14.00
Rows	NE	27	Ball Spacing	D1	13.000
Pitch	e	0.50		E1	13.000
Ball Size	b	0.30±0.05	Encapsulant/ Top Size	D2	n/a
Total Thickness	A	n/a		E2	n/a
Ball Height	A1	0.225 MIN	Pattern Style	Irregular*	
Substrate Thickness	A2	n/a	Perimeter Rows	N/A	
Top Thickness	A3		Center Array	N/A	
Form Tolerances					
Edge	aaa	0.10	Bottom	ddd	0.08
Substrate	bbb	0.10	Position	eee	0.15
top	ccc	0.10	Position	fff	0.05

All dimensions are in millimeters.
* See footprint for pattern details.



Generic Representation with Full Grid Array

THE INFORMATION CONTAINED IN THIS DRAWING IS THE SOLE PROPERTY OF R&D INTERCONNECT SOLUTIONS. ANY REPRODUCTION IN PART OR WHOLE WITHOUT THE WRITTEN PERMISSION OF R&D INTERCONNECT SOLUTIONS IS PROHIBITED.

UNLESS OTHERWISE SPECIFIED
- DIMENSIONS ARE IN MILLIMETERS
- DIMS APPLY AFTER PLATING

TOLERANCES UNLESS OTHERWISE NOTED: DECIMALS
ANGLES X.X ±0.25
X.XX ±0.10
X.XXX ±0.050

LEGEND:
 NOTE CALLOUT
 REVISION CHANGE
 ITEM NUMBER

7115 NORTHLAND TERRACE, SUITE 400
BROOKLYN PARK, MN 55428
(763) 509-0066

SCKT, 240G40 14-0.50

DESIGN	CAD FORUM	DRAWING NO.	107022-0031	REV.	D
SCALE	SOLIDWORKS	MATERIAL	See Page 1	SHEET	2 of 2